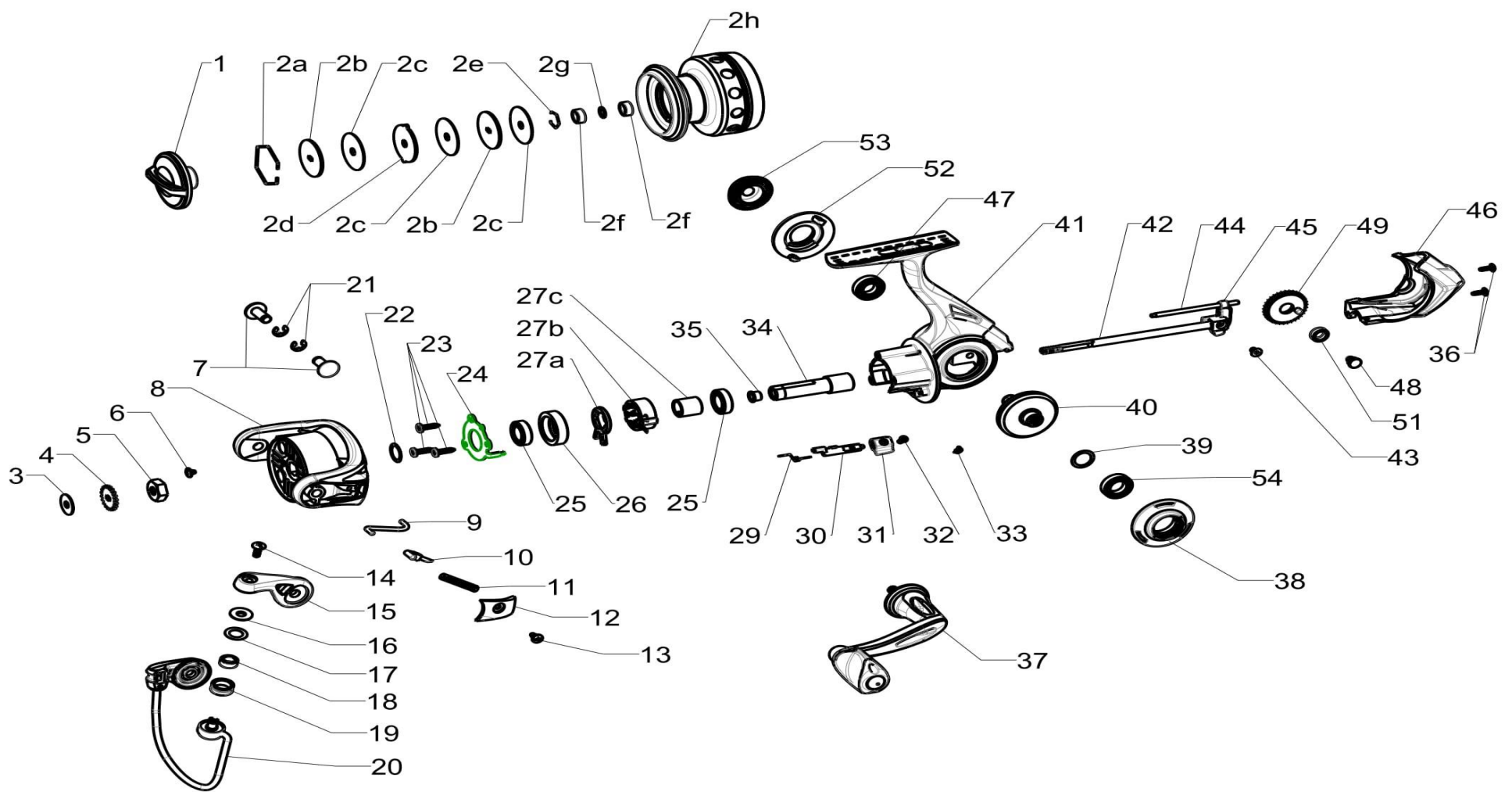


QUANTUM

DR30



Quantum DR30 Part List

Key No.	Description	Part No.	Qty	Key No.	Description	Part No.	Qty
		DR30				DR30	
1	Drag Knob Assembly	BAA332-02	1	26	Clutch Bearing Adapter	TAD190-01	1
2	Spool Assembly	UAD321-02	1	27	One way clutch kit include	TAD363-02	1
2a	Retainer Ring	BAA038-01	1	27a	One Way Clutch lever	BAA064-02	1
2b	Drag Washer "D"	TAD080-01	2	27b	One Way Clutch	BAA063-01	1
2c	Drag Washer "B"	BAA033-01	3	27c	Sleeve	TAD139-02	1
2d	Drag Washer "A"	CAA081-01	1	29	Stopper Cam spring	TAD089-01	1
2e	Retainer Ring	BAA119-01	1	30	Stopper Cam	BAA090-01	1
2f	Spool Ball Bearing	GH202A-01	2	31	Stopper Lever	BAA059-02	1
2g	WASHER	BAA076-01	1	32	Stopper Lever Screw	BAA135-01	4
2h	Spool	UAD021-02	1	33	Clutch spring	TAD216-01	1
3	Spool Adjust Washer	BAA030-01	1	34	Pinion Gear	TAD011-01	1
4	Clicker Gear	TAD037-01	1	35	Pinion Bushing	BAA213-01	1
5	Rotor Nut	BAA006-01	1	36	Rear Cap Screw	QW076-01	2
6	Rotor Nut Lock Screw	BAA094-01	1	37	Handle Assembly	TAD318-02	1
7	Arm Lever Screw	TAD042-01	2	38	Body Side Ring	AAF142-01	1
8	Rotor	UAD009-02	1	39	Drive Gear Adjust Washer	BAA105-02	1
9	Kick Lever	UAD019-01	1	40	Drive Gear Assembly	BAD312-01	1
10	Bail Actuator	BAA031-01	1	41	Body	AAF001-01	1
11	Bail Spring	BAA022-01	1	42	Main Shaft	TAD015-01	1
12	Arm Lever Cover	UAD087-02	1	43	Main Shaft Screw	BAA100-01	1
13	Arm Lever Cover Screw	TAD077-01	1	44	O/S Guide Pin	TAD093-01	1
14	Line Roller Screw	BAA108-01	1	45	O/S Slider	TAD025-01	1
15	Arm Lever	TAD007-01	1	46	Body Rear Cap	AAF140-01	1
16	Line Roller Collar	CAA102-01	1	47	Body Ball Bearing	TAD157-01	1
17	Line Roller Washer	BAA102-01	1	48	O/S Gear Pin	TAD062-01	1
18	Line Roller Ball Bearing	GH202-01	1	49	O/S Gear	TAD053-01	1
19	Line Roller	BAA004-01	1	51	O/S Gear Bearing	CT157-02	1
20	Bailwire Assembly	BAF347-01	1	52	Body Trim Ring	AAF145-01	2
21	"E" clip	QW120A-01	2	53	Handle Cap	TAD054-01	1
22	Rotor Adjust Washer	BAA105-03	1	54	Body Ball Bearing	CAA157-01	1
23	Bearing Retainer Screw	CAA057-01	3				
24	Bearing Retainer	CAA040-01	1				
25	Pinion Ball Bearing	CAA157-02	2				