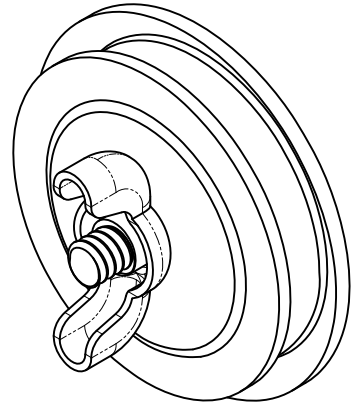
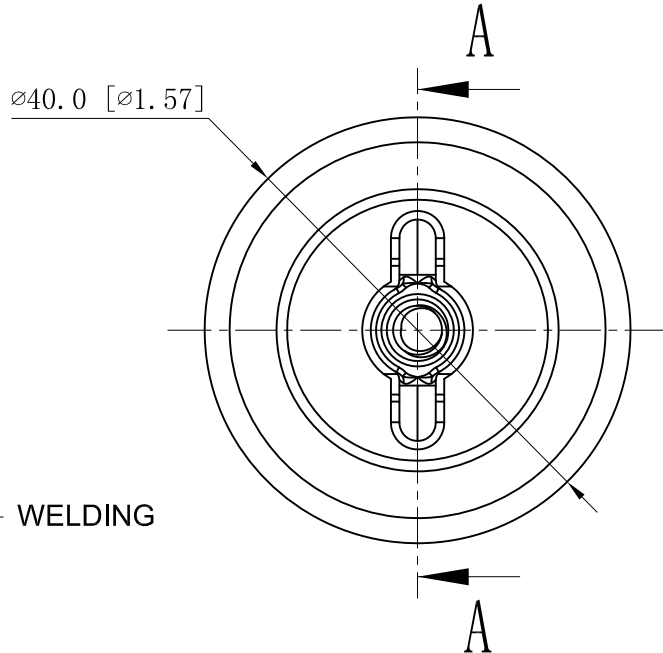
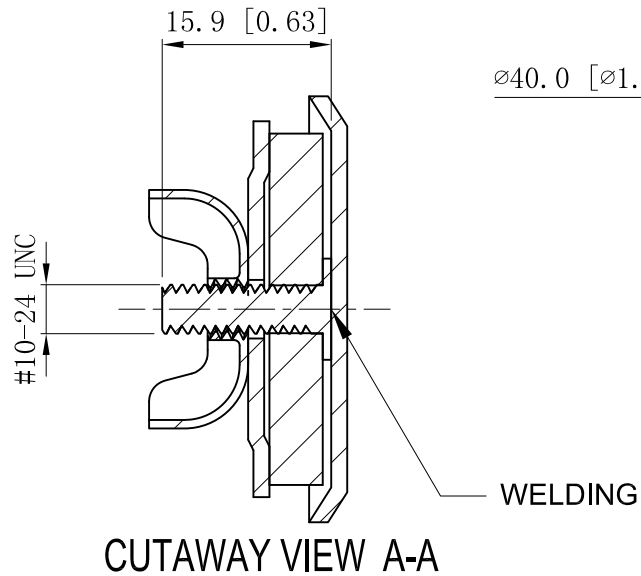
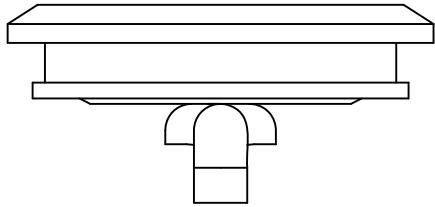


SIDES	BOTTOM
Material: 0.059"-SS316	
Gasket Material: PVC Closed-cell foam	



This data sheet is for reference only .GARVIN INDUSTRIES reserves the right to make changes to the design without prior notice.

DESCRIPTION
TRADE REFERENCE TERMS

STANDARD PACKING
10 PCS

GARVIN INDUSTRIES		
TITLE KNOCKOUT SEALS		
SIZE A4	DWG NO. KOS-75-0TSS	REV A
DATA SHEET		
www.garvinindustries.com		