

## Sentinel Mark II® Pressure Balance Diverter Valve Shower Combination

### FEATURES:

- Versatile shower system includes Sentinel Mark II® concealed anti-scald balanced pressure valve with integral diverter and integral stops and hand held spray combination.
- Chrome plated brass wall plate with metal index.
- Chrome plated brass lever handle.
- Independent center sleeve allows up to 1 in. of rough-in variation.
- Adjustable temperature limit stop. Brass valve body.
- Pressure balancing & ceramic temperature regulating cartridge with built-in check valves.
- Can be installed back-to-back.
- Roughing-in template included.
- Four port valve with ½ in. NPT Male (1/2 in. copper sweat) inlets and outlets..
- Chrome plated brass supply ell with wall flange.
- 69 in. square lock stainless steel hose with rubber liner.
- Swivel connector.
- In-line vacuum breaker.
- 42 in. chrome plated brass slide bar with mounting screws.
- VS-100-PC handshower with flow control device reduces flow to 2.5 gpm (9.46 L/min)
- S-2272-E2 showerhead with 2.0 gpm (7.57 L/min) flow rate.
- S-2500 shower arm and wall flange.

### OPTIONS:

- E175: 1.75 gpm (6.6 L/min) flow rate hand shower
- LH: Less showerhead
- VH: 69 in. white vinyl hose
- 1: S-2251 showerhead
- 2: S-2252 showerhead
- 3: S-2253 showerhead
- 9: S-2292 showerhead

### STOCK FINISH:



PC

### STANDARDS:

- ASSE 1016 certified (shower valve)
- ASME 112.18.1/CSA B125.1 certified (shower valve)
- WaterSense certified (S-2272-E2 shower head)
- ADA Compliant (Shower valve & trim)

NOTE: 1. All dimensions are in inches (millimeters) unless otherwise specified and are subject to change without notice. 2. Unless otherwise specified, all inlets and outlets are 1/2" female copper sweat. 3. For ADA mounting locations, consult ADAAG, ANSI A117.1, or static regulations

### WARRANTY:

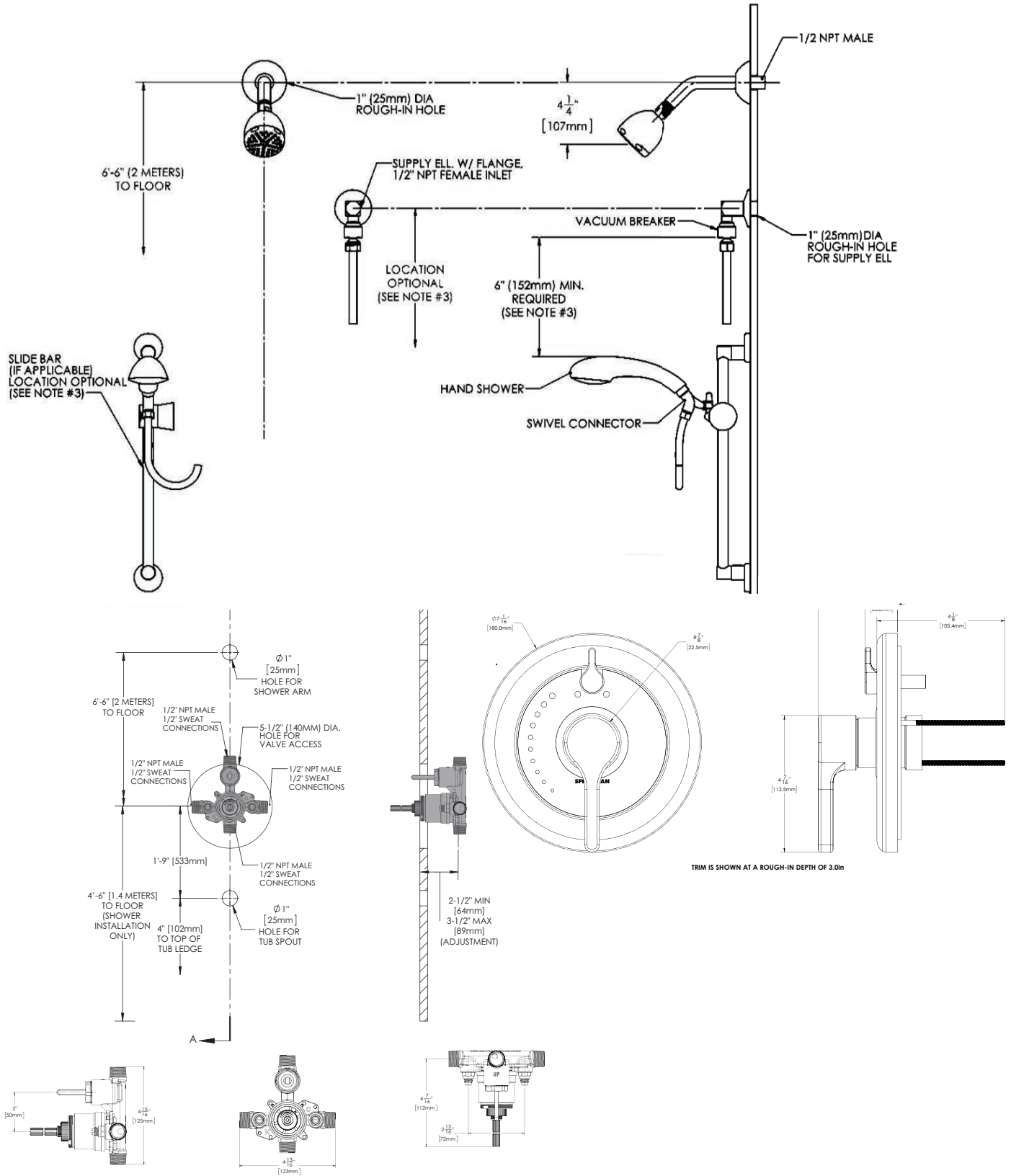
Visit [www.speakman.com](http://www.speakman.com) for full product warranty information

- See [Speakman.com](http://Speakman.com) for warranty information



Information continues on next page

## Sentinel Mark II® Pressure Balance Diverter Valve Shower Combination



NOTE: 1. All dimensions are in inches (millimeters) unless otherwise specified and are subject to change without notice. 2. Unless otherwise specified, all inlets and outlets are 1/2" female copper sweat. 3. For ADA mounting locations, consult ADAAG, ANSI A117.1, or static regulations

Architect/Engineer Approval Space:

P: 800-537-2107  
 F: 800-977-2747  
 W: WWW.SPEAKMAN.COM  
 R: 01-SEPTEMBER 2021