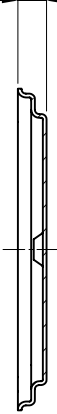
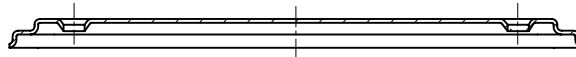
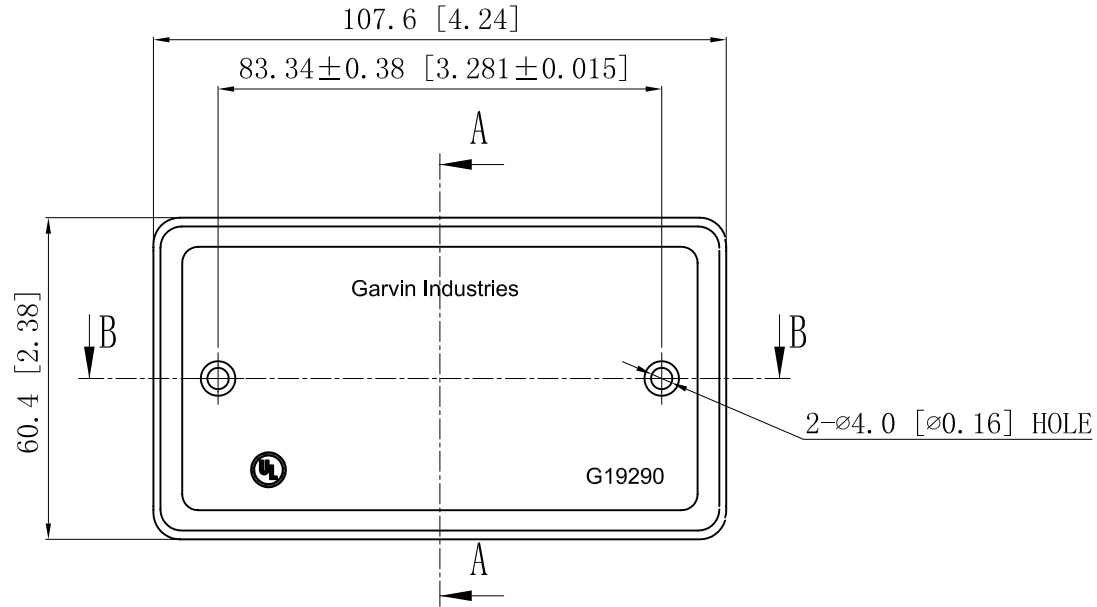


| | |
|---|--------|
| SIDES | BOTTOM |
| | |
| | |
| | |
| 2 PCS 6-32×3/8 Screws Installed | |
| Material:Steel-0.031MIN"-G60 Galvanized | |

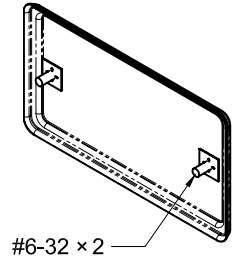
5.4 [0.21]



CUTAWAY VIEW A-A



CUTAWAY VIEW B-B



#6-32 × 2

2-∅4.0 [∅0.16] HOLE

| |
|-----------------------|
| DESCRIPTION |
| |
| TRADE REFERENCE TERMS |
| |

This data sheet is for reference only .GARVIN INDUSTRIES reserves the right to make changes to the design without prior notice.

| | | | | |
|------------------|--|------|---------|-----|
| STANDARD PACKING | <h1 style="text-align: center;">GARVIN INDUSTRIES</h1> <h2 style="text-align: center;">HANDY UTILITY BOX COVERS</h2> | | | |
| 100 PCS | | | | |
| | TITLE | SIZE | DWG NO. | REV |
| | | A4 | G19290 | D |
| | DATA SHEET | | | |