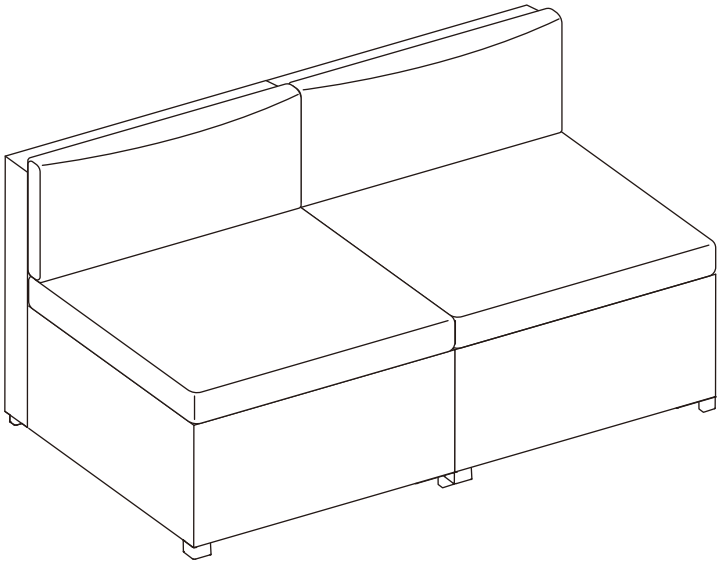


# INSTRUCTION MANUAL



**Logan Rattan Armless Sofa  
with Cushions (Set of 2)  
SKU: OP112-B**

**V1.0**

## ! NOTICE

### Do not overtighten screws. (Insert all screws before tighten screws.)

- Please do not exceed the weight limitations of this item.
- Do not stand on or use any part of this item as a step ladder.
- Firmly secure all bolts, screws and nuts before use.
- Reconfirm that all bolts, screws, and nuts are secure every 90 days.
- Do not use or store this item in the proximity of open flame or flammable/combustible chemicals.
- Be aware that some parts are heavy and have sharp edges.

## TOOLS REQUIRED



ALLEN WRENCH  
(PROVIDED)



WRENCH  
(PROVIDED)



CHAIR  
330 LBS  
CAPACITY



1 PERSON  
ASSEMBLY



UP TO 60 MIN.  
ASSEMBLY

## HARDWARE

1

M6 x 50mm  
BOLT



12 PCS

2

M6 x 35mm  
BOLT



16 PCS

3

M6 WASHER



40 PCS

4

M6 NUT



12 PCS

5

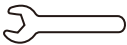
ALLEN  
WRENCH



1 PC

6

WRENCH

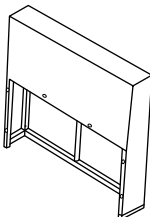


1 PC

## PARTS

A

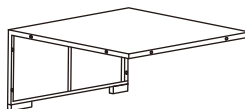
CHAIR BACKREST



2 PCS

B

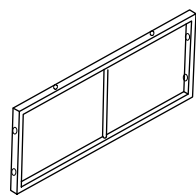
CHAIR SEAT



2 PCS

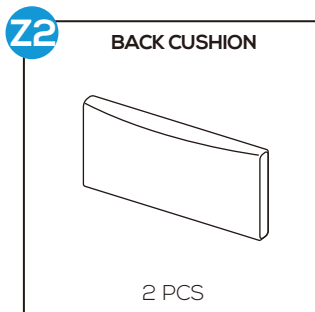
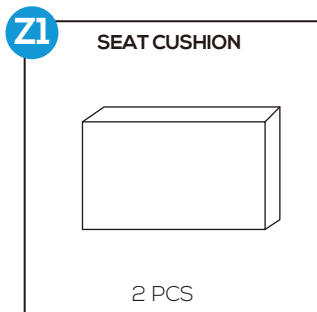
C

CHAIR SIDE PANEL



4 PCS

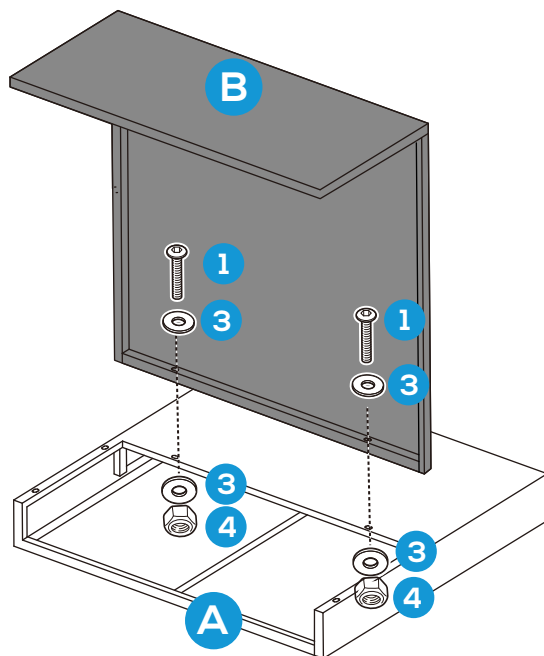
## CUSHION



## PRODUCT ASSEMBLY - SINGLE SEAT

**1**

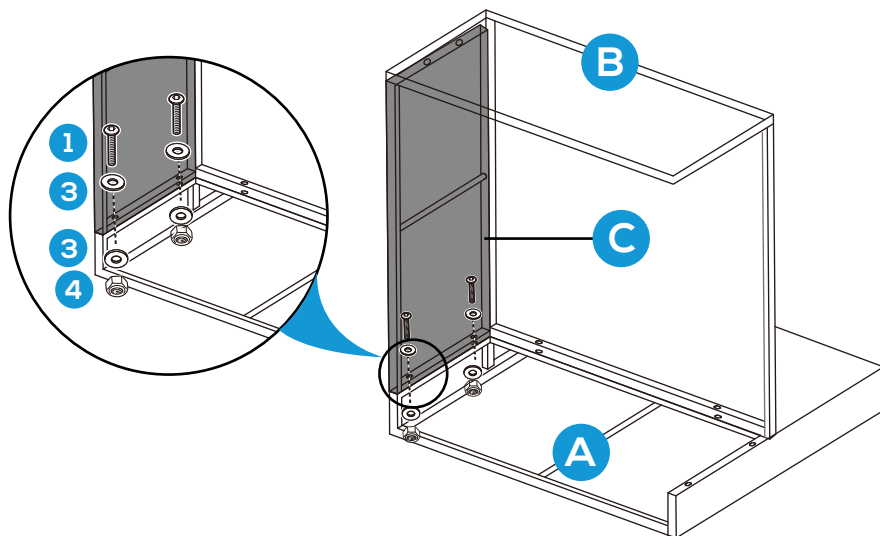
Attach part B Chair Seat to part A Chair Backrest with 2 PCS of part 1 bolt and part 4 Nut as well as 4 PCS of part 3 Washer.



## PRODUCT ASSEMBLY - SINGLE SEAT

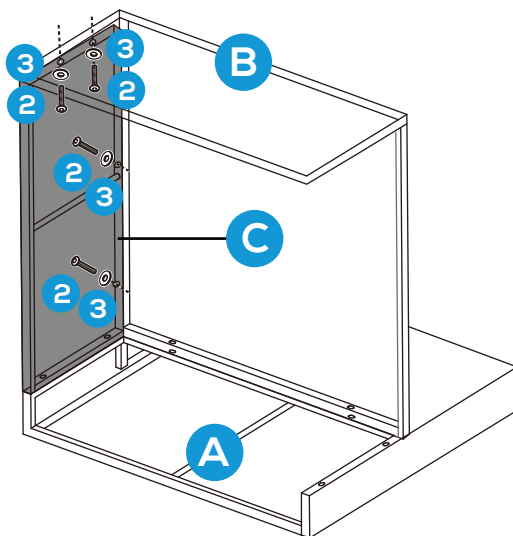
**2**

Attach part C Chair Side Panel to part A Chair Backrest with 2 PCS of part 1 bolt and part 4 Nut as well as 4 PCS of part 3 Washers as below.



**3**

Attach part C Chair Side Panel to part B Chair Seat with 4 PCS of part 2 bolt and part 3 Washer.

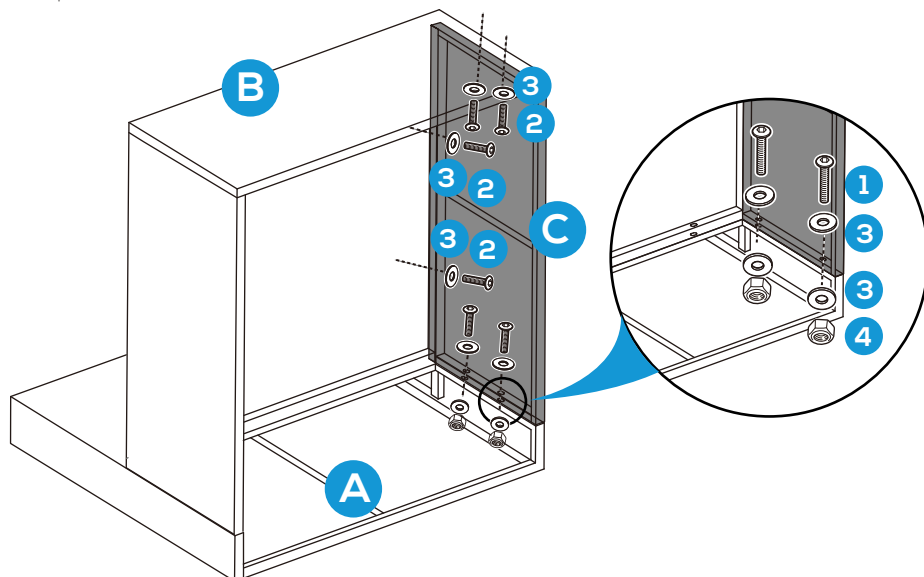


## PRODUCT ASSEMBLY - SINGLE SEAT

4

Attach part C Chair Side Panel to part A Chair Backrest with 2 PCS of part 1 bolt and part 4 Nut as well as 4 pcs of part 3 Washers.

Attach part C Chair Side Panel to part B Chair Seat with 4 pcs of part 2 Bolt and part 3 Washer.



5

Place part Z1 Seat Cushion and part Z2 Back Cushion into the Chair to finish the assembly.

Do the same to assemble another Single Chair.

