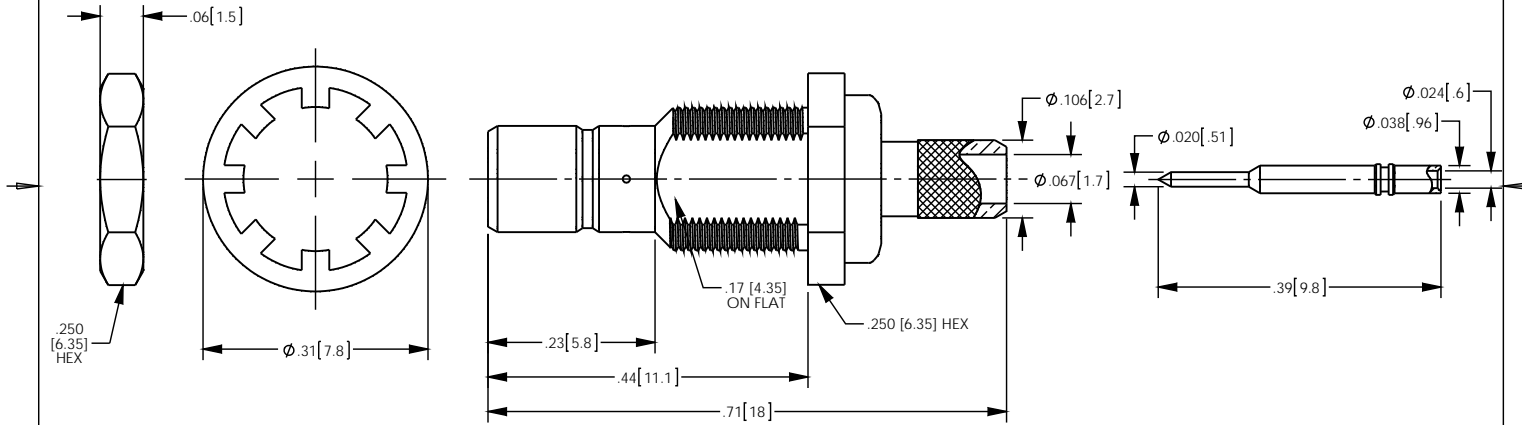
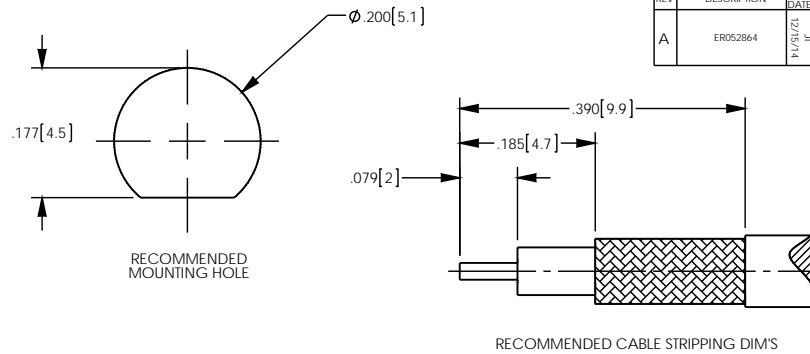


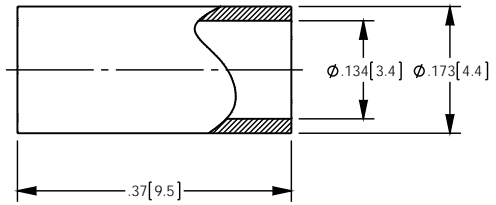
NOTES: UNLESS OTHERWISE SPECIFIED

1. FOR USE WITH RG-316 U/D OR EQUIVALENT.
2. MATERIAL SPECIFICATIONS:
INSULATORS: PTFE, COLOR - NATURAL
FERRULE: COPPER
ALL OTHER METAL PARTS: BRASS
3. FINISH SPECIFICATIONS:
CONTACT: .000003 MIN THICK GOLD OVER .000050 MIN THICK NICKEL
ALL OTHER METAL: THIN GOLD OVER .000050 MIN THICK COPPER
4. ELECTRICAL SPECIFICATIONS:
IMPEDANCE: 50 OHMS
5. CONTACT, FERRULE, LOCK WASHER, AND HEX NUT SHIPPED LOOSE.
6. CRIMPED FERRULE (.151 HEX) AND SOLDER TO CONTACT.

REV	DESCRIPTION	BY DATE	APPD
A	ER052864	JL 12/15/14	SM



CATALOG P/N: 1021A204MS



PER ASME Y14.5M-1994 UNLESS OTHERWISE SPECIFIED, DIMENSIONS ARE IN INCHES (MM) TOLERANCES: DECIMAL: .XX [XX] ± .01 [0.3] .XXX [XXX] ± .005 [0.13] .XXXX [XXXX] ± .0005 [0.013]		 WINCHESTER Winchester Electronics Corporation ELECTRONICS 199 Park Road Ext Suite 104 Middlebury, Connecticut 06762	
CUSTOMER SALES DRAWING		THIRD ANGLE	
DRAWN: JL DATE: 12/15/2014		APPROVED: SM DATE: 12/19/2014	
APPROVED: MS DATE: 12/15/14		APPROVED: XXX DATE: XX/XX/XX	
SCALE: 5:1		SMB CRIMP JACK FOR RG-316 U/D CABLE	
A		SD1021A204MS	SHIT OF REV 1 1 A