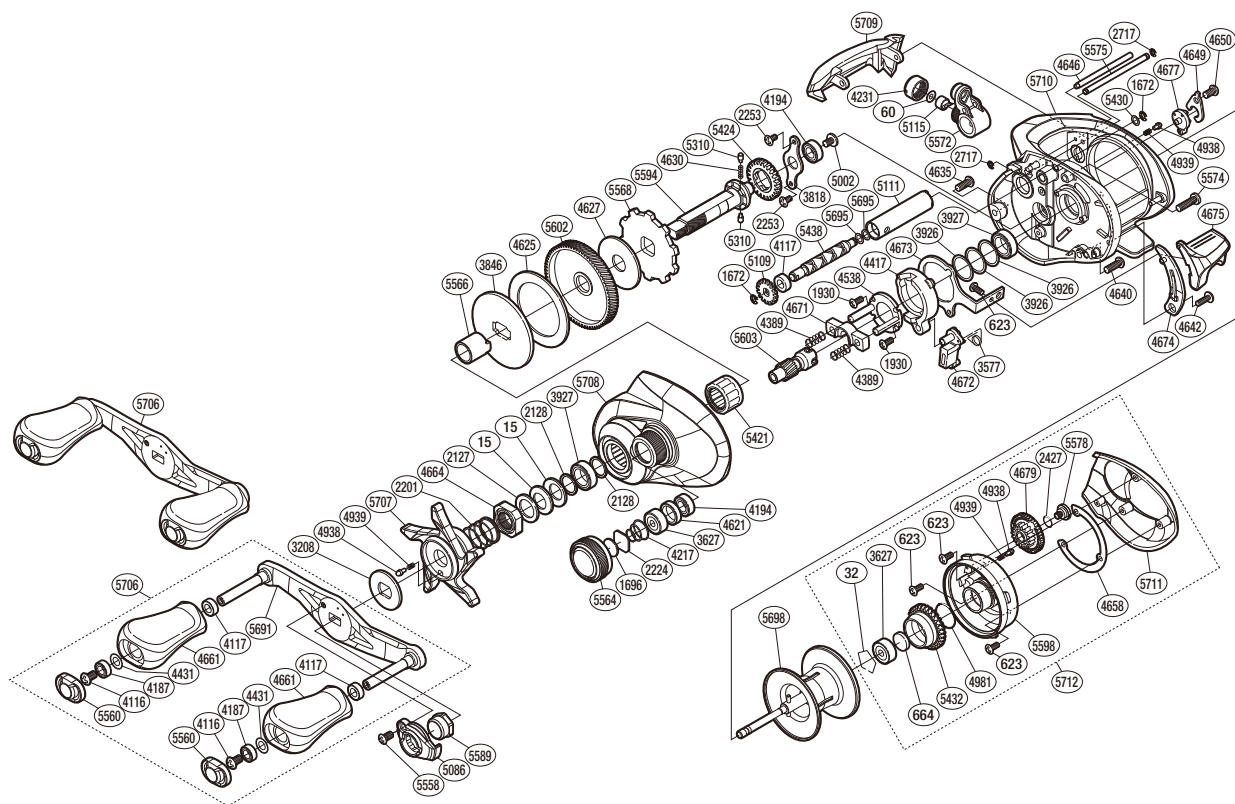


# SHIMANO

## CHRONARCH

## CH G-151HG



(51RH29F151X)

#	Part No.	Description	#	Part No.	Description	#	Part No.	Description
0015	10D60	Drag Spring Washer	4538	10F42	Clutch Cam Retainer	5424	10TQ5	Idle Gear
0032	10GEW	Bearing Retainer	4621	10EYR	Bearing Spacer	5430	10GA0	Washer
0060	10CFW	Spacer	4625	106XT	Drag Washer	5432	101S2	Brake Pipe Gear Assembly
0623	103C0	Screw	4627	10CHE	Drag Washer	5438	10TPR	Worm Shaft
0664	1057S	Spacer B	4630	10JDX	Idle Gear Spring	5558	10R1Q	Screw
1672	105NC	E Lock	4635	103DE	Screw	5560	10FMM	Handle Knob Seal
1696	10896	Cast Control Spacer	4640	103KP	Screw	5564	10223	Cast Control Cap
1930	103NH	Screw	4642	10PVS	Screw	5566	10226	Roller Clutch Inner Tube
2127	10J1N	Star Drag Spacer	4646	10QSD	Stabilizer Bar	5568	1021K	Anti-Reverse Ratchet
2128	105PW	Bearing Washer	4649	10BGP	Cam Lever Retainer	5572	101ZT	Line Guide Assembly
2201	10A76	Star Drag Spring	4650	103KS	Screw	5574	1023R	Screw
2224	1085F	Spool Tension Spacer	4658	108AY	Washer	5575	101WH	Line Guard
2253	103N4	Screw	4661	1032A	Handle Knob	5578	1028Y	Screw
2427	108WS	O Ring	4664	10A3E	Star Drag Nut	5589	10TPG	Handle Nut
2717	105NB	E Lock	4671	1046U	Yoke	5594	1021J	Drive Shaft
3208	10J22	Star Drag Click Plate	4672	105ZV	Clutch Pawl	5598	10QW9	Brake Case Assembly
3577	10N1V	Clutch Pawl Spring	4673	10QGG	Clutch Plate	5602	1021R	Drive Gear
3627	105C0	Ball Bearing	4674	1096R	Clutch Bar Guide	5603	1021B	Pinion Gear
3818	109T0	Drive Shaft Retainer	4675	10MWE	Quick-Fire li Clutch Bar Assembly	5691	1019U	Handle Shank Assembly
3846	10D3N	Key Washer	4677	10BAJ	Side Plate Cam Lever	5695	1018Y	Washer
3926	10G8C	Washer	4679	10AZA	Br Dial	5698	1019T	Spool Assembly
3927	10EX8	Ball Bearing	4938	10B27	Click Pin	5706	101C3	Handle Assembly
4116	103E9	Screw	4939	10988	Click Spring	5707	10RXW	Star Drag
4117	10PXY	Bushing	4981	10LA8	O Ring	5708	101CA	Left Side Plate Assembly
4187	104VX	Ball Bearing	5002	10PVU	Screw	5709	10SLZ	Level Wind Protector
4194	105BP	Ball Bearing	5086	10Q5S	Handle Retainer	5710	101C9	Frame Assembly
4217	10BR8	Spool Tension Spring	5109	10FNX	Idle Gear	5711	10EBX	Right Side Plate
4231	10FJW	Pawl Cap	5111	10NFW	Level Wind Guard	5712	101C8	Right Side Plate Assembly
4389	104BU	Yoke Spring	5115	10FFU	Line Guide Pawl			
4417	10KSC	Clutch Cam	5310	10HJG	Idle Gear Pin			
4431	10G8G	Washer	5421	10TM8	Roller Clutch Bearing	4692	10LQ0	B-100 Oil (Accessory)

Please note that the number of adjusting washers may not be the same as shown in the exploded views.  
(Adjustment will vary with each individual product.)

(230531)\_002