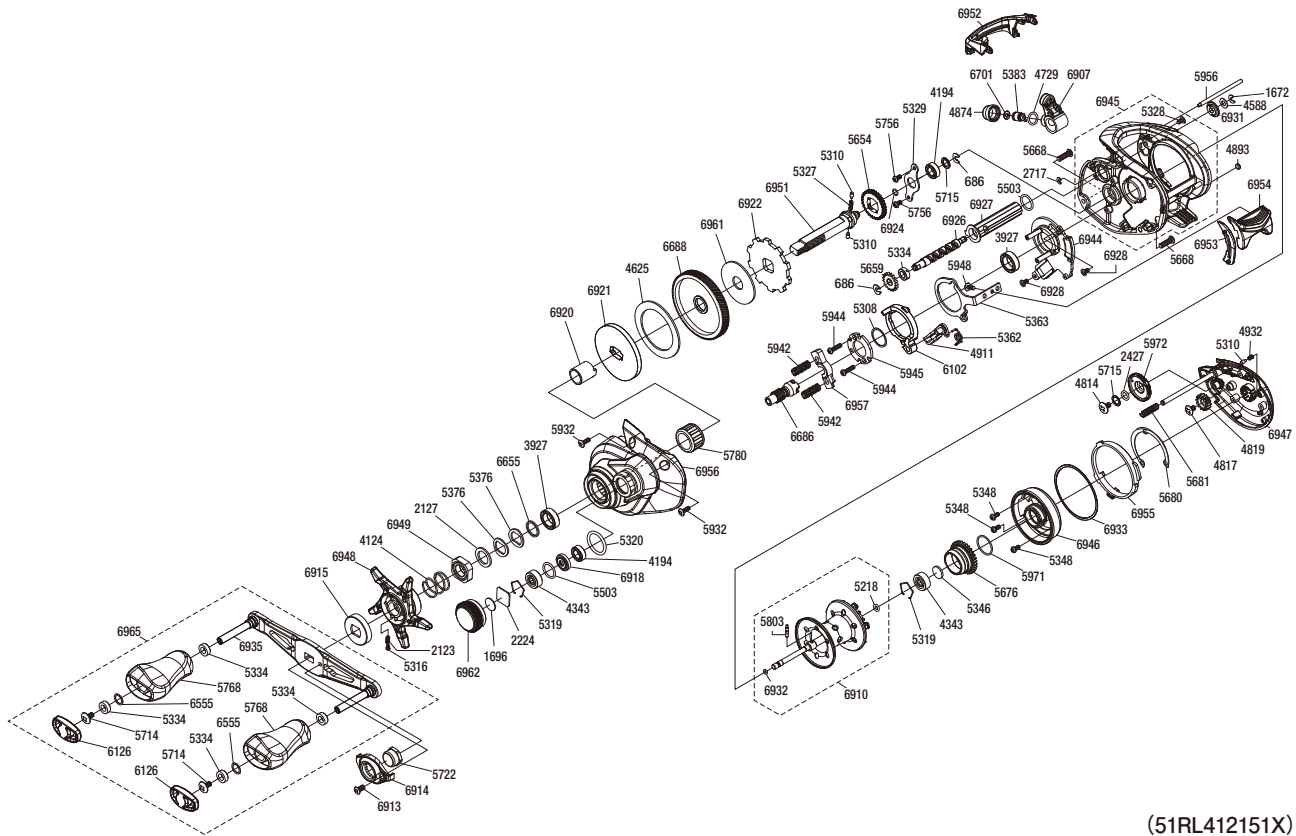


# SHIMANO

## CURADO MGL

## CUMGL151HG



(51RL412151X)

#	Part No.	Description	#	Part No.	Description	#	Part No.	Description
686	105NK	E Lock	5362	10TMC	Clutch Pawl Spring	6910	10T3G	Spool Assembly
1672	105NC	E Lock	5363	10TME	Clutch Plate	6913	10DV5	Screw
1696	10896	Cast Control Spacer (B)	5376	109F5	Washer	6914	101E6	Handle Nut Plate
2123	10BT2	Click Spring	5383	10BHQ	Line Guide Pawl	6915	101Q1	Star Drag Click Plate
2127	10J1N	Star Drag Spacer	5503	101GT	O Ring	6918	100BL	Bearing Spacer
2224	1085F	Cast Control Spacer (A)	5654	101K8	Idle Gear A	6920	100BM	Roller Clutch Inner Tube
2427	108WS	O Ring	5659	10SRL	Idle Gear C	6921	100BK	Key Washer
2717	105NB	E Lock	5668	10SXB	Screw	6922	100BJ	Anti-Reverse Ratchet
3927	10EX8	Ball Bearing	5676	101DR	Brake Ring Gear	6924	108WU	O Ring
4124	10A70	Star Drag Spring	5680	10SSN	Washer	6926	10S8K	Worm Shaft
4194	105BP	Ball Bearing	5681	10KNH	Spring	6927	10T3X	Level Wind Guard
4343	105C3	Ball Bearing	5714	10LFA	Screw	6928	100S4	Screw
4588	10FJZ	Washer	5715	10G6D	Washer	6931	100G7	Level Wind Guard Bushing
4625	106XT	Drag Washer C	5722	101DW	Handle Nut	6932	100BH	O Ring
4729	108WQ	O Ring	5756	10S3Y	Screw	6933	101UN	Washer
4814	103LE	Screw	5768	10EBH	Handle Knob	6935	10T36	Handle Shank Assembly
4817	103L7	Screw	5780	1005E	Roller Clutch Bearing	6944	10R5C	Clutch Guard Assembly
4819	10CLF	Idle Gear	5803	10MD0	Spool Clutch Pin	6945	10T32	Frame Assembly
4874	10FJB	Pawl Cap	5932	10LCY	Screw	6946	10S8N	Brake Case
4893	108PY	Washer	5942	100U9	Yoke Spring	6947	10T3B	Right Side Plate Assembly
4911	10MQM	Clutch Pawl Assembly	5944	10LV0	Screw	6948	10SVS	Star Drag
4932	10GQZ	Click Spring	5945	100U5	Clutch Cam Retainer	6949	10A3U	Star Drag Nut
5218	10EZ7	O Ring	5948	10LF4	Screw	6951	10DRN	Drive Shaft
5308	10190	Washer	5956	100UT	Stabilizer Bar	6952	10SAY	Level Wind Protector
5310	10HJG	Idle Gear Pin	5971	100GW	O Ring	6953	10DRX	Clutch Bar Guide (B)
5316	10MFC	Click Pin	5972	10263	Brake Dial	6954	10SBC	Clutch Button
5319	1054D	Bearing Retainer	6102	100W0	Clutch Cam	6955	10DRY	Right Side Plate Cam Lever
5320	10R22	O Ring	6126	100NC	Handle Knob Seal	6956	10S5A	Left Side Plate
5327	10JDY	Idle Gear Spring	6555	104FH	Washer	6957	1001Q	Yoke
5328	10LCQ	Screw	6655	100SE	Washer	6961	10CJH	Drag Washer B
5329	109T1	Drive Shaft Retainer	6686	10S6E	Pinion Gear	6962	10S8T	Cast Control Cap
5334	10PXZ	Bushing	6688	10S6C	Drive Gear	6965	1019Q	Handle Assembly
5346	10EX5	Bearing Spacer	6701	10CFU	Washer			
5348	10L1Q	Screw	6907	10R51	Line Guide Assembly			

Please note that the number of adjusting washers may not be the same as shown in the exploded views.  
(Adjustment will vary with each individual product.)

(230611)\_003