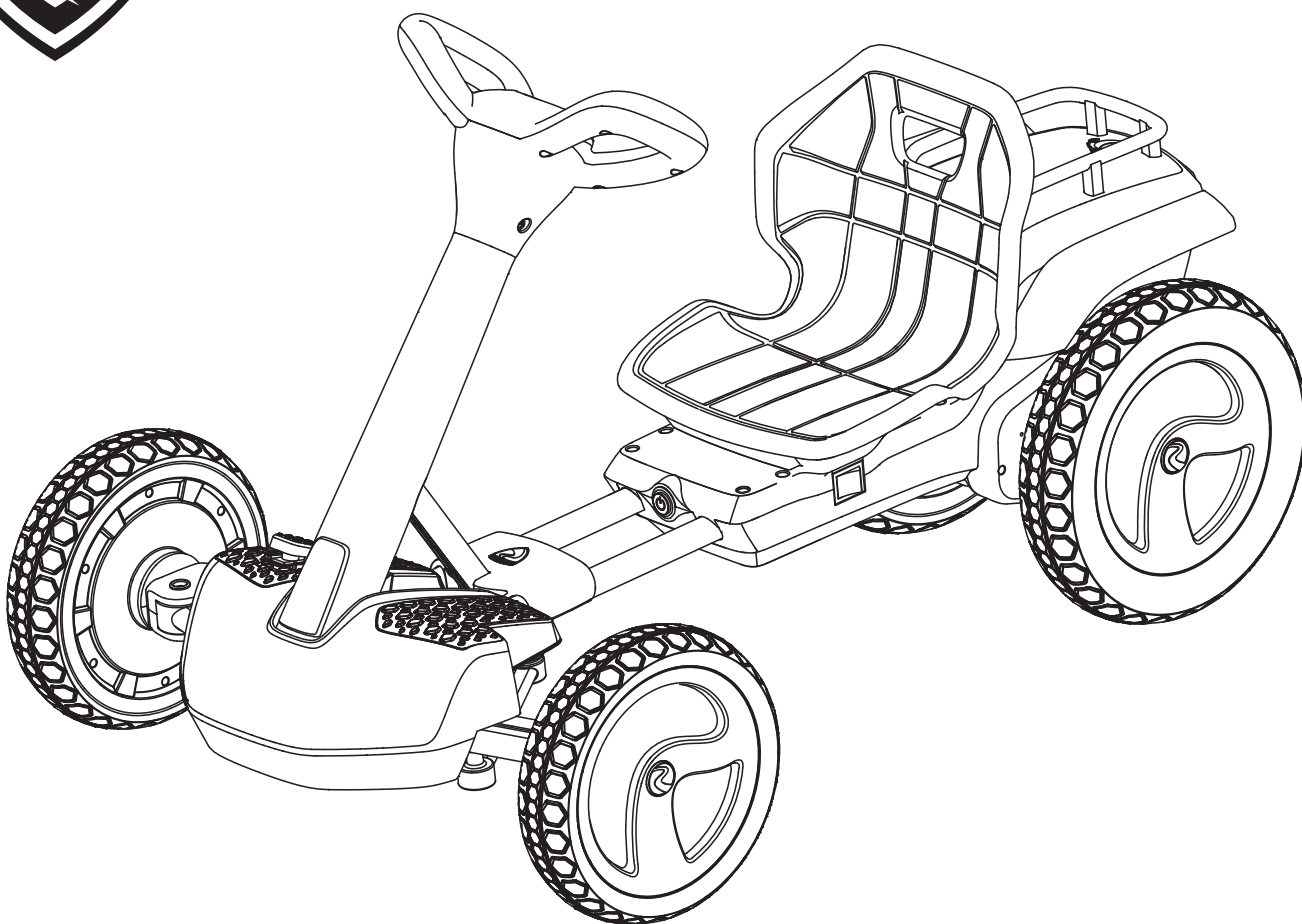




# ***FLEXkartXL***



## **Owner's Manual and Assembly Instructions**

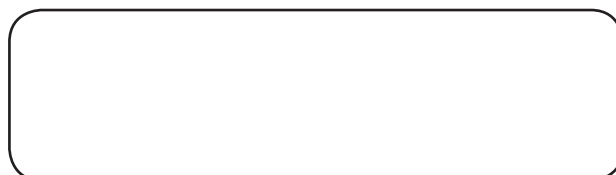
Model #: W409AC

Read and understand the entire manual before assembly and operation. The vehicle must be assembled by an adult who has read and understands the instructions.

Made in China.

Styles and colors may vary. Styles and colors may vary. Before returning your product to the store, please contact our Customer Service team. Call 1-888-982-9309 for assistance and replacement parts.

**IMPORTANT: Save this manual with your sales receipt.**



# Introduction

Thank you for purchasing this Rollplay vehicle. We hope the rider enjoys it for miles to come. Please read this instruction guide carefully before assembling and operating the vehicle.

Please contact Rollplay Customer Service with any questions. Have your model number and serial number ready before calling. Please provide proof of purchase.

Keep your sales receipt and register your product at [www.rollplay.com](http://www.rollplay.com).

Hours: 8 AM - 5 PM EST, Monday - Friday

Phone: 1-888-982-9302

Email: [customerservice@rollplay.com](mailto:customerservice@rollplay.com)

Web: [www.rollplay.com](http://www.rollplay.com)

## Specifications:

BATTERY	12V 7AH
MOTOR	12V
AGE	5 and up
MAX WEIGHT	50 kg (110 lb)
PRODUCT SIZE	99.5 x 66.5 x 62 cm (39.2 x 26.2 x 24.4 in)
SPEED	Up to 8.0 km/h (5 mph)
RECHARGE TIME	8-12 Hours
TYPICAL RUN TIME	1 Hour
CHARGER OUTPUT	DC 12.0V



# IMPORTANT!

**YOU MUST CHARGE THE BATTERY  
FOR 24 HOURS (NO MORE THAN  
30 HOURS) BEFORE FIRST USE!**

Do Not charge battery inside home (garage is fine)

Charge the battery after each use.

Charge the battery at least once a month, even if the vehicle is not in use.

Failure to charge the battery once a month may result  
in a battery that will not accept a charge.

**DO NOT RETURN YOUR PRODUCT TO THE STORE.**

**CONTACT ROLLPLAY WITH QUESTIONS.**

E-mail Customer Service if you need assistance or replacement parts.  
Please have your model number and serial number ready before calling.

Keep your sales receipt and register your product  
at [www.rollplay.com](http://www.rollplay.com), as we require proof of purchase.

[customerservice@rollplay.com](mailto:customerservice@rollplay.com)

1-888-982-9309

**Read this entire manual prior to  
assembly to ensure safe operation  
of the vehicle.**

<b>Safety .....</b>	<b>5</b>
<b>Parts .....</b>	<b>7</b>
<b>Charging Instructions .....</b>	<b>8</b>
<b>Unfolding .....</b>	<b>9</b>
<b>Front Wheel Assembly.....</b>	<b>10</b>
<b>Rear Wheel Assembly .....</b>	<b>11</b>
<b>Wheel Cover Assembly.....</b>	<b>12</b>
<b>Steering Wheel Assembly.....</b>	<b>13</b>
<b>Seat Assembly and Adjustment.....</b>	<b>14</b>
<b>Operating Instructions .....</b>	<b>15</b>
<b>Folding .....</b>	<b>16</b>
<b>Maintenance.....</b>	<b>17</b>
<b>General Care .....</b>	<b>18</b>
<b>Troubleshooting Guide .....</b>	<b>19</b>
<b>FCC Information .....</b>	<b>21</b>
<b>Service .....</b>	<b>22</b>
<b>Warranty .....</b>	<b>23</b>
<b>Product Registration .....</b>	<b>24</b>



## **WARNING: SAFETY RIDING RULES**

The user must follow all safety rules and guidelines, or serious injury or death may occur.

**NEVER LEAVE CHILD UNATTENDED. ALWAYS** keep child in view when child is on the vehicle. Direct adult supervision is **REQUIRED**.

- **ALWAYS** use common sense and safe practices when using the vehicle. The user must be at least 5 years old and weigh no more than 50 kg (110 lbs.).
- This product contains small parts that are for adult assembly only. Keep small children away when assembling. Remove and dispose of all protective material and plastic bags before assembly.
- Riders must always wear a fitted helmet that complies with U.S. Consumer Product Safety Commission (CPSC) Standard 16 CFR 1203.
- Only sit on the seat of the vehicle.
- Do not allow more than one rider.
- Do not overload the vehicle. Do not remove the weight restriction decals.
- Do not tow the vehicle with another vehicle or similar device.
- Keep body parts, such as hands, legs, hair and clothing away from moving parts. Moving parts can cause serious injury.
- **ALWAYS** wear shoes while using the vehicle.
- **NEVER** operate near roadways or motor vehicles.
- Do not operate near drop-offs, such as steps, steep inclines or hills. Operate on relatively level ground.
- Do not operate near water, swimming pools or other bodies of water.
- Do not operate in dangerous weather conditions such as rain or snow.
- Do not operate near loose dirt, mud, sand or fine gravel.
- Always use the vehicle in a safe, secure environment with adult supervision.

**RISK OF FIRE.** Do not operate near flammable vapors (gasoline, paint thinner, acetone, etc.). Remove batteries if product is to be left unused for a long time. Do not bypass. Replace only with supplied 12V battery, charger and circuitry.

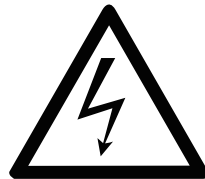
**WARNING: BATTERY SAFETY**

- Battery posts, terminals and related accessories contain lead and lead components. **DO NOT** open the battery.

**PROPOSITION 65 WARNING:** Battery posts, terminals and related accessories contain lead and lead compounds, chemicals known to the State of California to cause cancer and reproductive harm. Batteries also contain other chemicals known to the State of California to cause cancer. **WASH HANDS AFTER HANDLING.**



- Contact exposure to battery leakage (lead acid) may cause serious injury. Immediately contact your doctor if exposure occurs. If the chemical is on the skin, flush immediately with cool water for 15 minutes. If the chemical is swallowed, immediately give the person water or milk. Do not give water or milk if the person is vomiting or has decreased alertness. Do not induce vomiting.

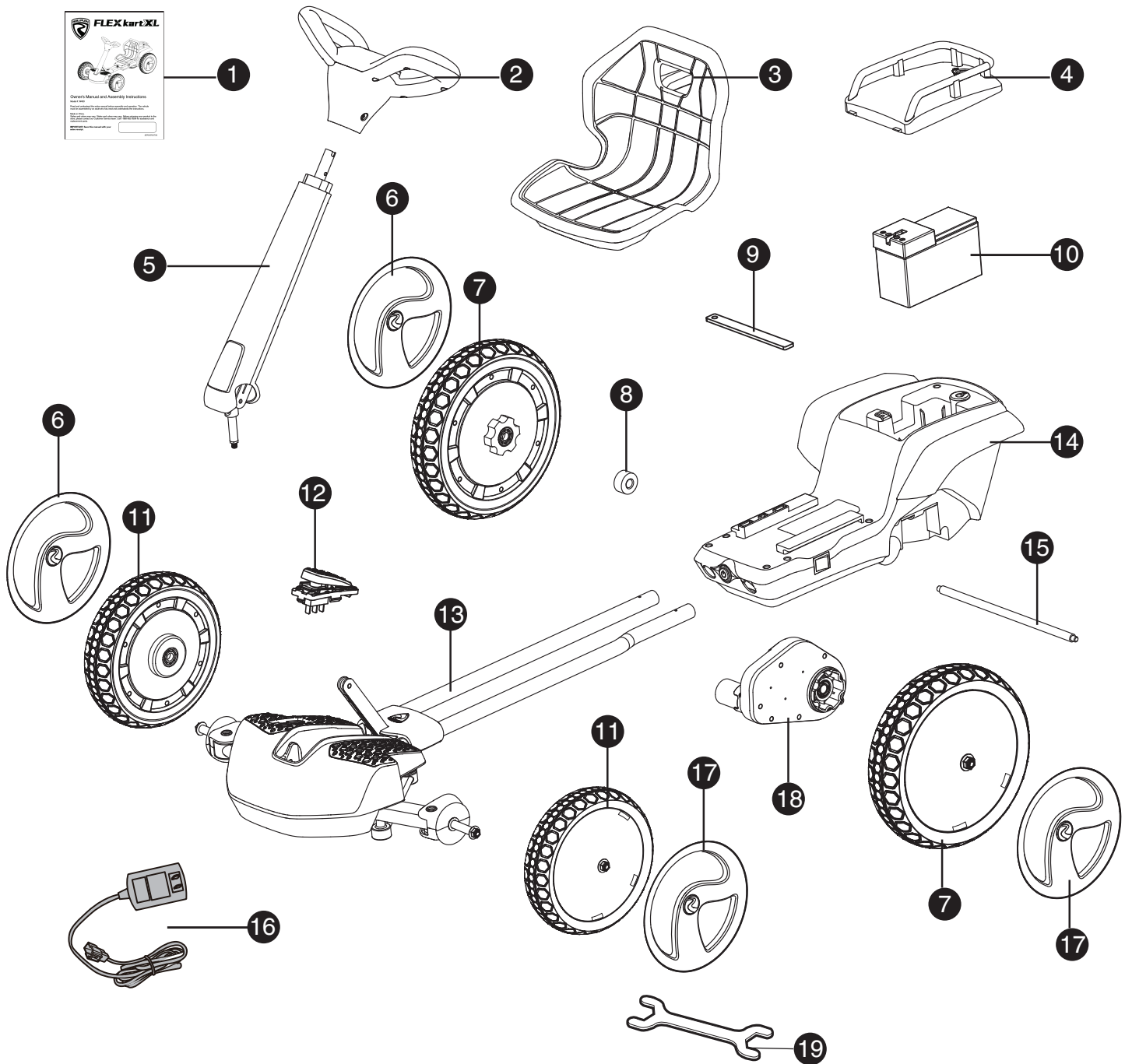


- Tampering with or modifying the electric circuit system may cause shock, fire or explosion. It could permanently damage the system. Keep the charger housing closed to prevent exposed wiring, which may cause electric shock.

**IMPORTANT:** Before using the vehicle for the first time, the battery must be charged for a full 24 hours (no more than 30 hours).

**WARNING: ADULT SUPERVISION REQUIRED**

- Before using the vehicle, the rider must understand the vehicle controls and safety issues.
- It is the responsibility of the adult to educate the child and to determine if the child is capable of understanding the vehicle controls.
- An adult must **ALWAYS** directly supervise the use of this vehicle.
- **NEVER** leave a child unsupervised in the vehicle.



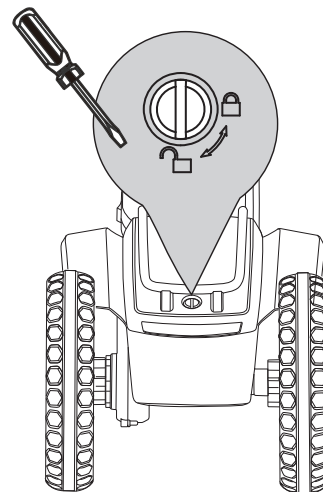
- |                            |                       |                            |
|----------------------------|-----------------------|----------------------------|
| 1. Manual                  | 9. Battery Clamp      | 17. Left Wheel Covers (x2) |
| 2. Steering Wheel          | 10. Battery           | 18. Gear Box               |
| 3. Seat                    | 11. Front Wheels (x2) | 19. Wrench (x2)            |
| 4. Battery Box Cover       | 12. Pedal             |                            |
| 5. Steering Column         | 13. Frame             |                            |
| 6. Right Wheel Covers (x2) | 14. Vehicle Body      |                            |
| 7. Rear Wheels (x2)        | 15. Rear Axle         |                            |
| 8. Rear Axle Inner Bushing | 16. Battery Charger   |                            |

## YOU MUST CHARGE THE BATTERY FOR 24 HOURS (NO MORE THAN 30 HOURS) BEFORE THE FIRST USE!

**ONLY AN ADULT SHOULD HANDLE THE BATTERY AND CHARGER.**

### To Charge the Battery:

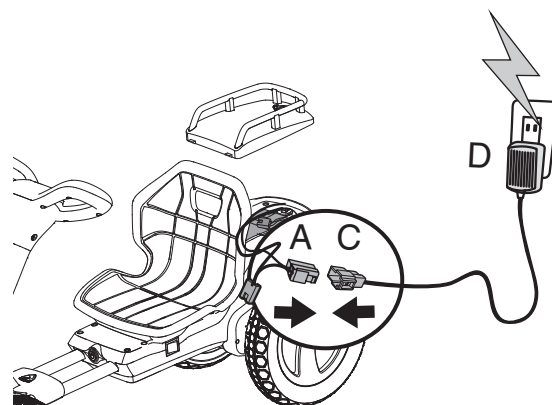
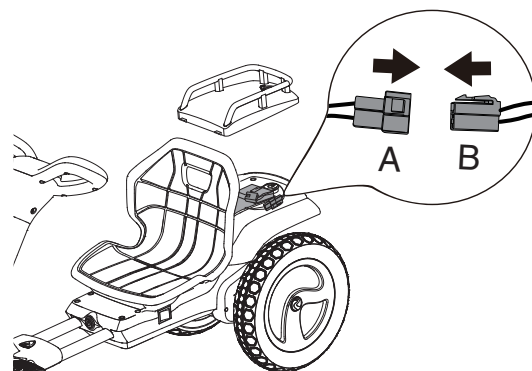
1. Ensure the FLEX Kart XL has stopped and turned off.
2. Locate the cover in the rear of the vehicle. Using a coin or screwdriver turn the cover lock to the unlocked position and remove the cover.
3. Unplug the red battery connector (A) from the red engine connector (B).
4. Connect the red battery connector (A) to the red battery charger connector (C) and plug (D) into a 120V outlet.

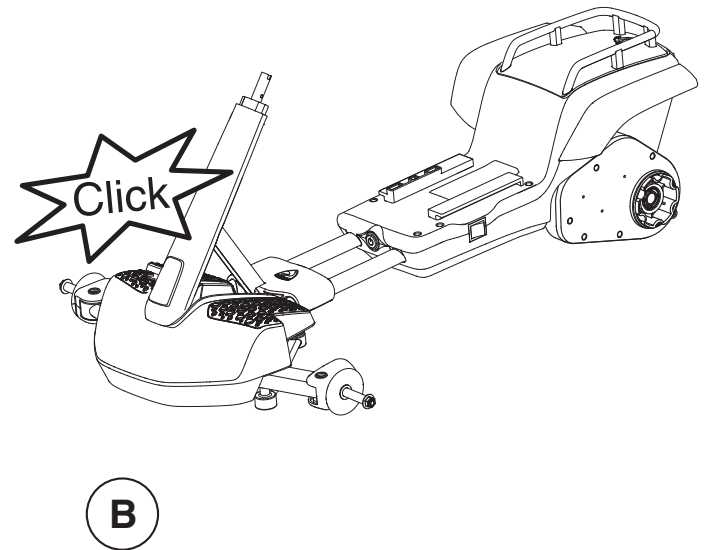
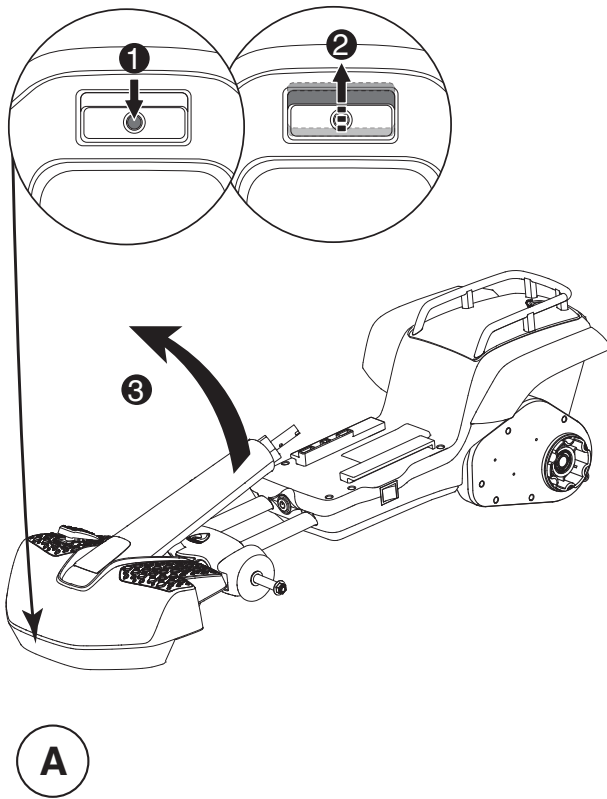


### To Reconnect the Battery:

1. Unplug the battery charger (D) from the outlet.
2. Unplug the red battery connector (A).
3. Reconnect the red battery connector (A) to the red engine connector (B).
4. Replace the seat and lock in place.

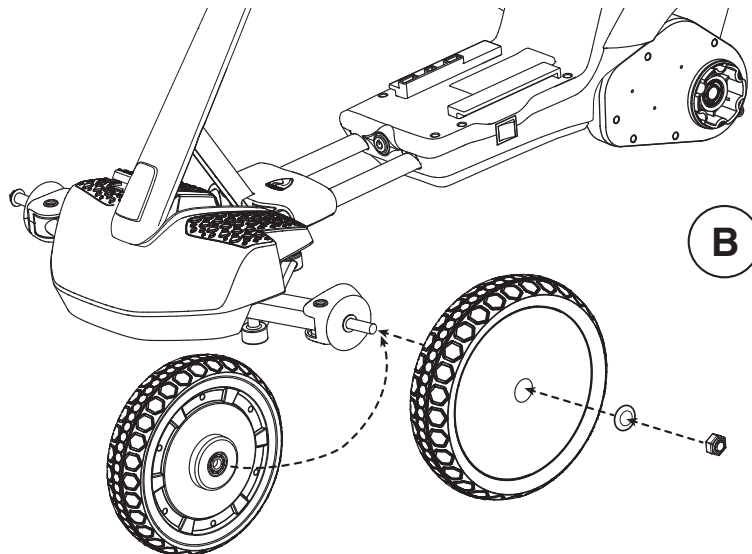
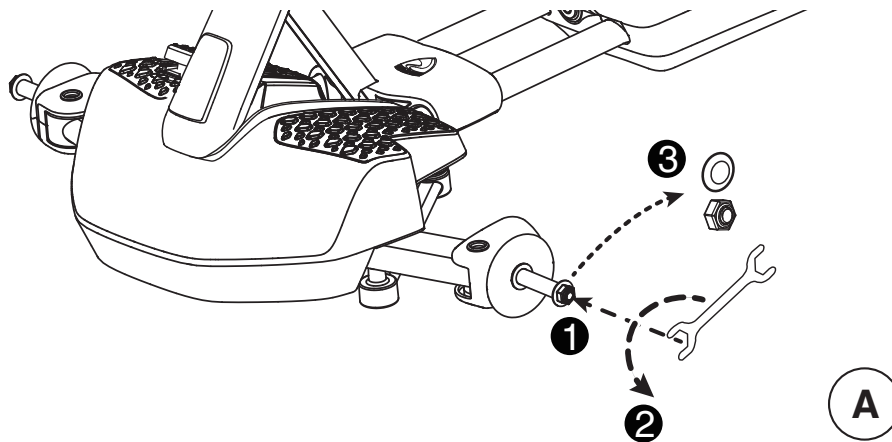
Note: It is not necessary to remove the battery for charging. However, if the battery does not reach the outlet, it can be removed for charging. Use a screwdriver to release the battery clamp and disconnect the red battery connector from the red engine connector to remove the battery.





- A. Lift the front, press the lock button ①, and pull the folding handle ② up at the same time.
- B. Lift the steering column ③ up after unlocking, and open the steering column ③ up until it “clicks” into place.

## 10 Front Wheel Assembly

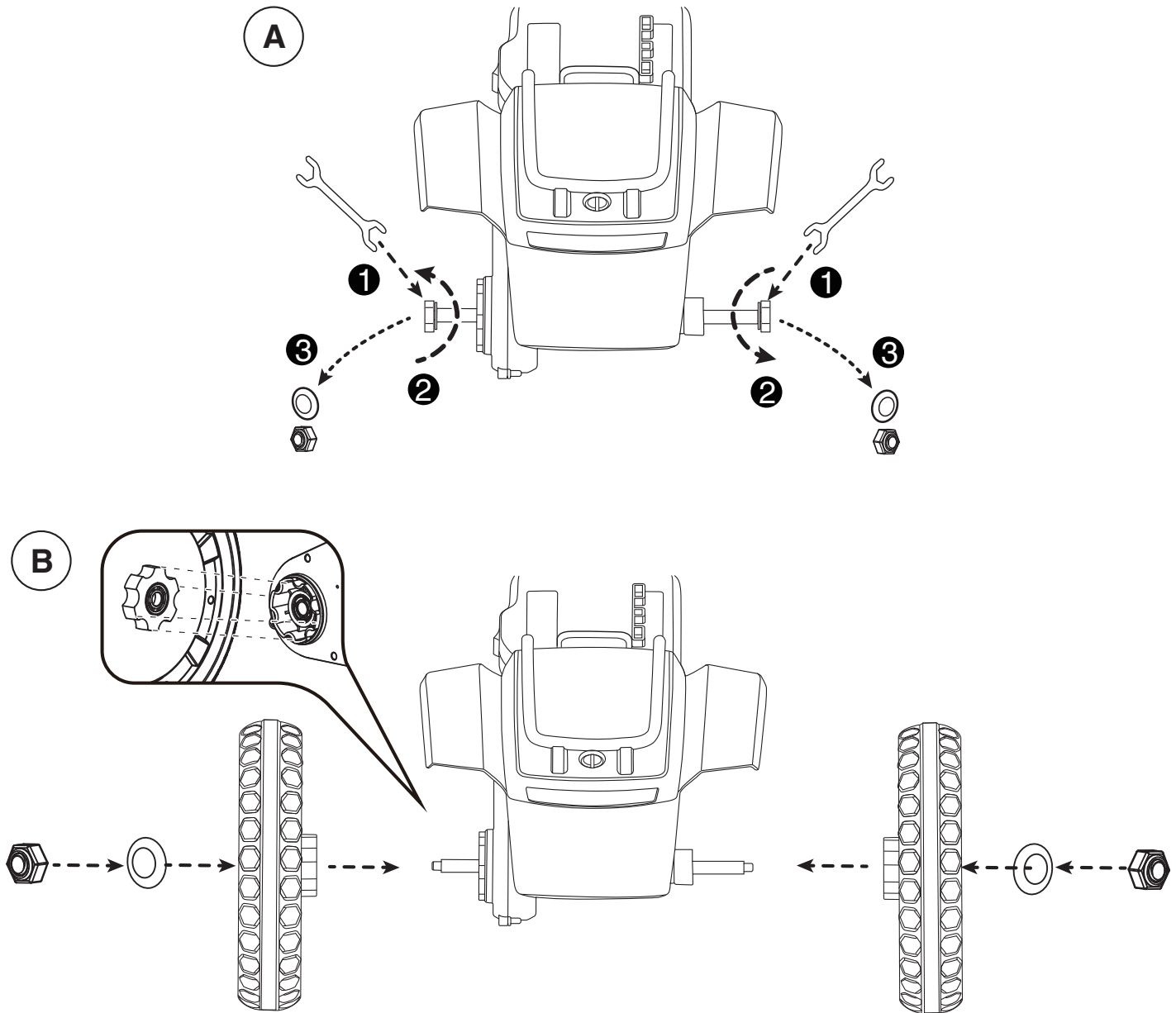


- A. Remove the nut and small washer on the front axle with the wrench provided, set aside for later use. Keep the big washer on the axle
- B. Slide the front wheel onto the front axle as shown then insert the washer and tighten the nut.
- C. Repeat steps A - B to install the other front wheel

Note: Front wheels are smaller than rear wheels.

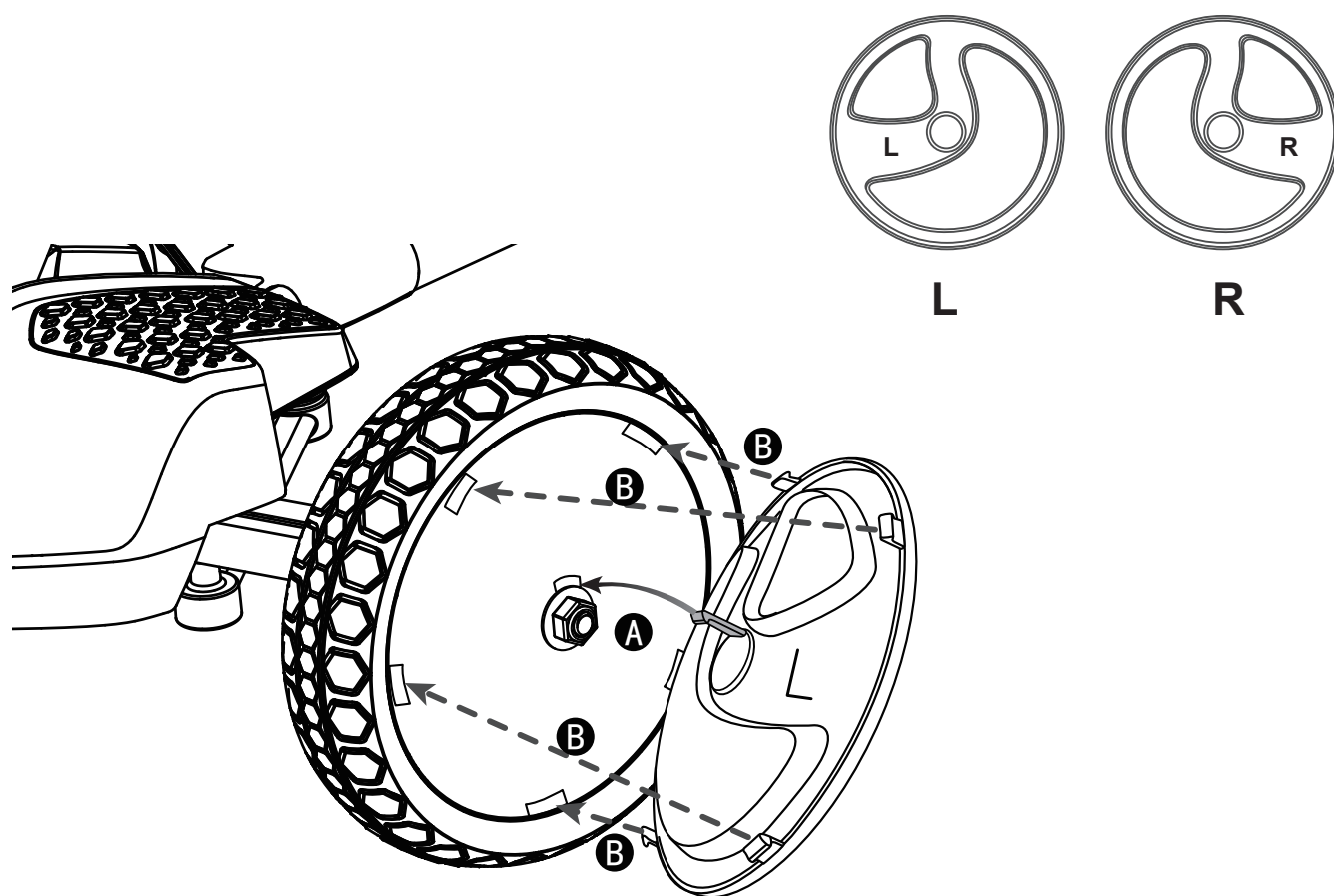


# Rear Wheel Assembly 11



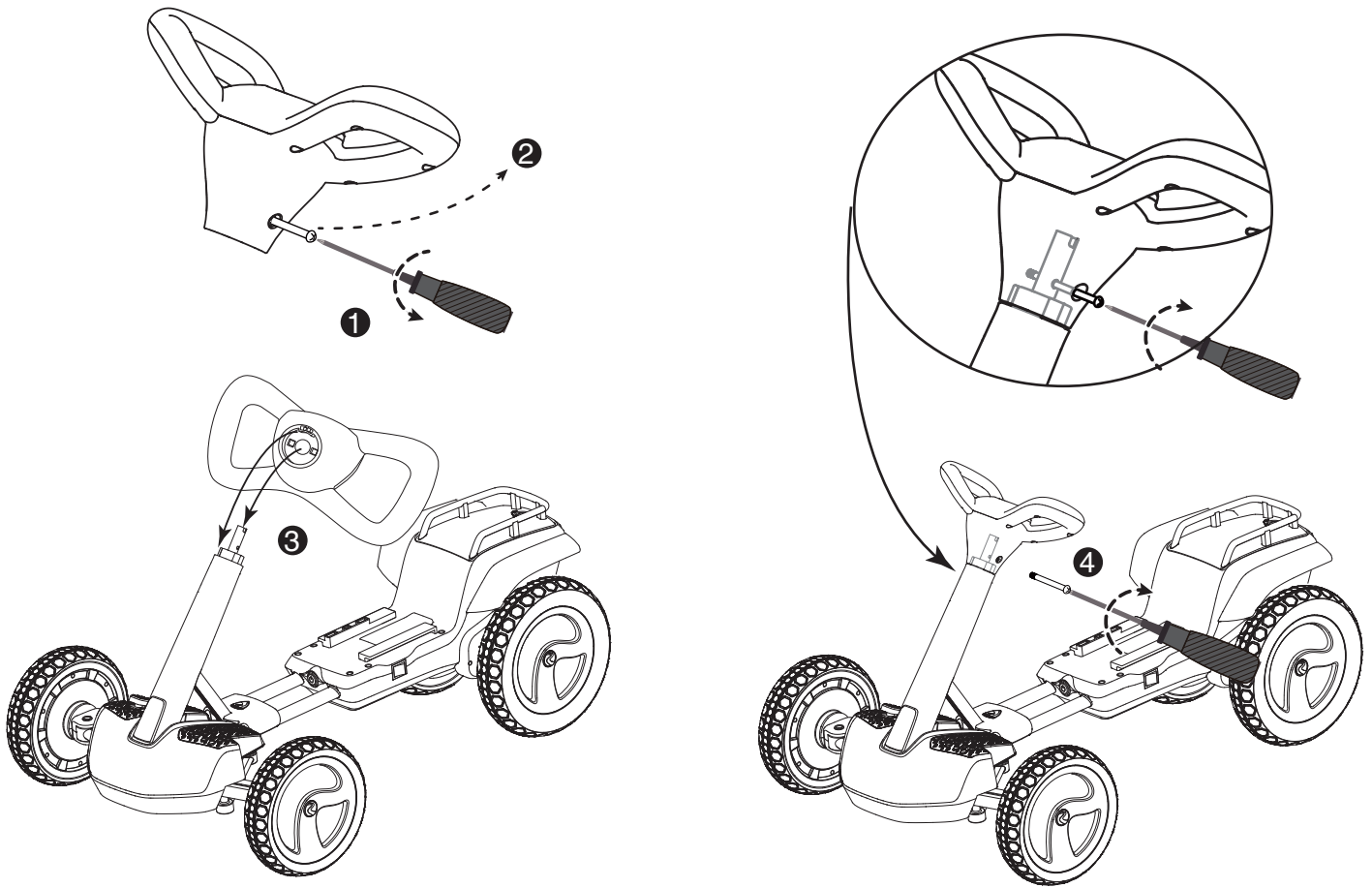
- A. Remove the nut and small washer on the rear axle with the wrench provided, set aside for later use.
- B. Slide the rear wheel onto the rear axle as shown then insert the washer and tighten the nut.
- C. Repeat the steps A - B to install the other rear wheel
- D. Continue with Rear Wheel Cover Assembly on next page

## 12 Wheel Cover Assembly



- A. Insert the buckle in the middle of the cover into the slot in the middle of the wheel
- B. Align the tabs on the wheel cover to slots on the wheel and press it into place
- C. Repeat to install the other rear wheel cover

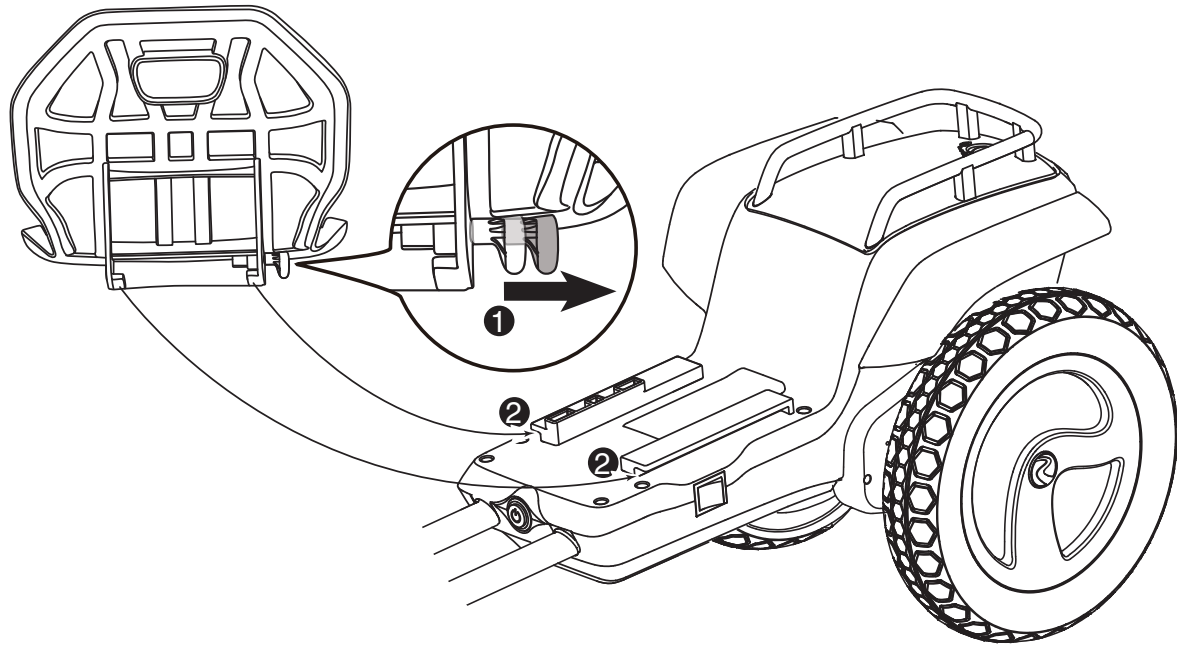
Note: Wheel covers are the same size for front and rear and are marked "L" for left and "R" for right.



Use a Phillips screwdriver ① to remove the screw ② from the steering wheel.

Then insert the steering wheel onto the handlebar ③ in the direction shown above. Note: Steering wheel will not go on if installed in wrong direction.

Align the screw hole ④ with the tightening screw on left side of steering wheel and tighten into place.

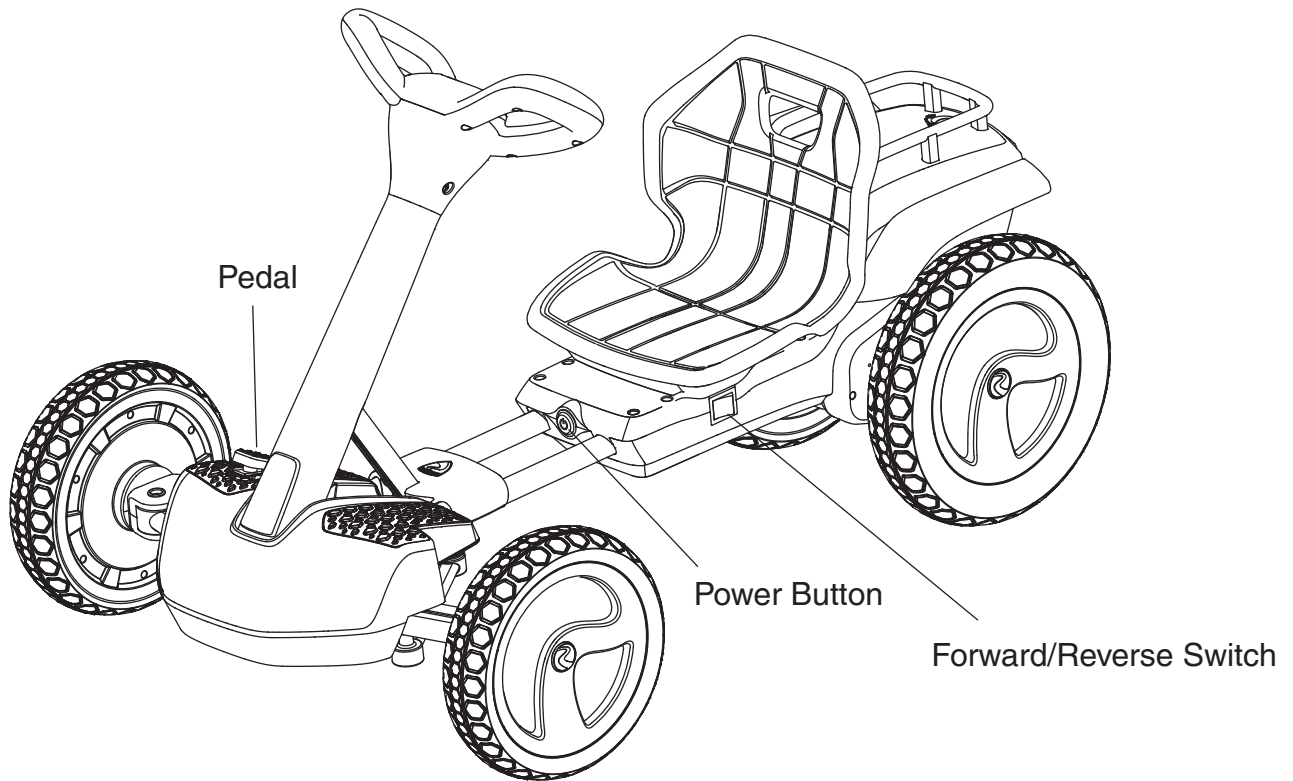


Pull the spring-operated seat release knob ① outwards, align the clamping hook at the bottom of the seat with the seat slide chute ②. Push the seat onto the chute and then release the seat handle. ①

Continue pushing toward back until you hear the first "click." This indicates the seat is locked in the front position.

Pull the seat handle outwards and continue to push the seat backward until you hear a second "click." This indicates the seat is locked in the rear position.

The front and rear positions can be adjusted easily as needed.

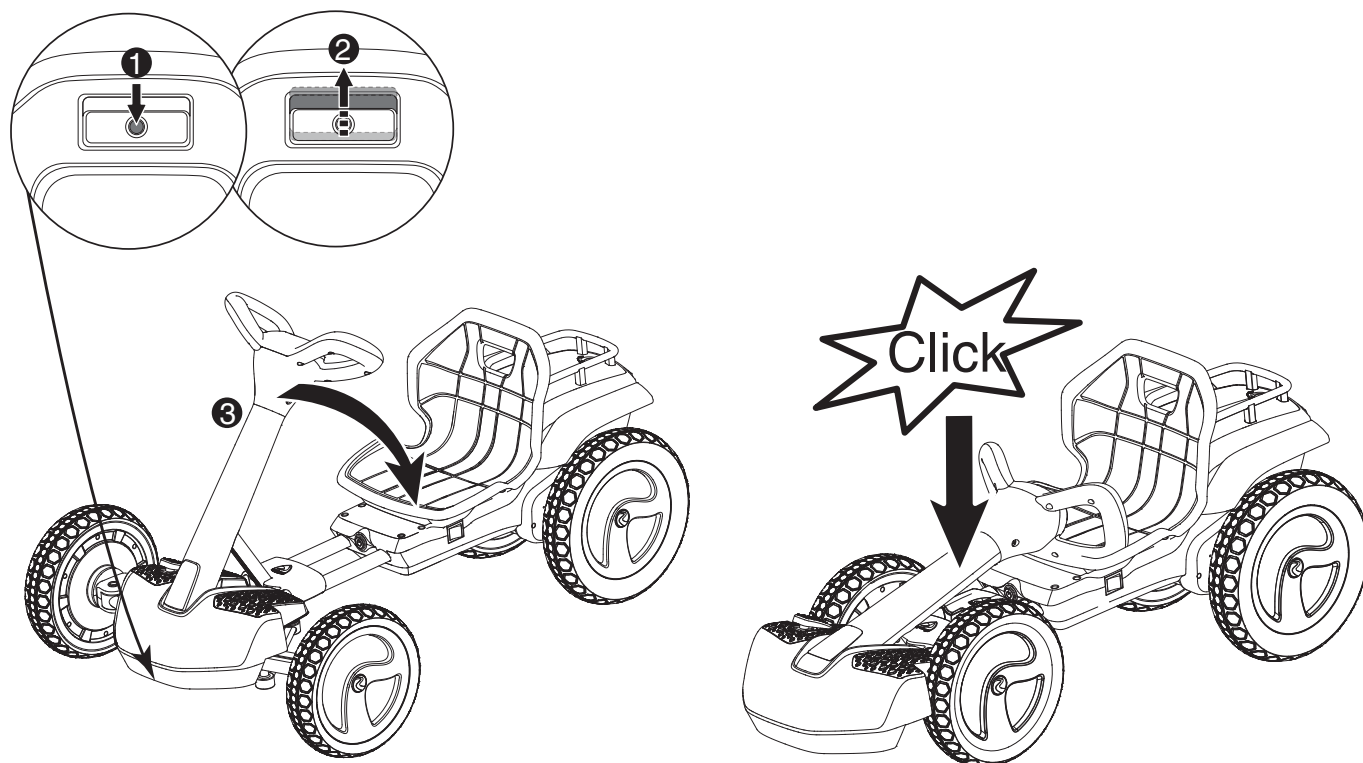


To start press the Power Button

Using the Forward/Reverse Switch to select the direction you wish to travel. Now, step on the pedal to make the vehicle move

Release the pedal to stop the vehicle

## 16 Folding



Lift the vehicle front, press the lock button ①, and pull the folding handle ② up at the same time.

Fold the steering column ③ down. You will hear a "click" sound to indicate the steering column is locked into the folded position

## Important Battery and Charger Information

- Only an adult who has read and understands the safety warnings may handle and operate the battery and battery charger. Keep away from children.
- NEVER charge battery inside home (garage is fine).
- Charge the battery for 24 hours before using the vehicle for the first time.
- Charge the battery immediately after each use. Charge for at least 8-12 hours, but no more than 20 hours.
- Charge the battery at least once a month, even if the vehicle is not used or stored.
- Never leave the battery in a discharged state.
- Connect the terminal of the battery and charger, then plug the charger into a 120V AC outlet.
- It is normal for the charger to heat up slightly. If the charger temperature rises above 71°C / 160°F, disconnect the charger and call Customer Service for assistance.
- Keep the charger away from water or excessive moisture to prevent short-circuiting.
- Only use the charger specified with the original item. Do not charge the battery with any other charger.
- Do not use this charger on any other batteries than the one provided.
- Do not replace the battery with any other battery, otherwise the warranty will be voided. If you need a replacement battery, see Page 22 for replacement information.
- Remove damaged batteries from the vehicle immediately. Recycle or dispose of the used batteries responsibly.
- Do not short circuit the supply terminals.
- Do not leave the battery connected in the vehicle for extended periods of time when the vehicle is not in use. Disconnect the battery connector from the engine connector before storing.
- Vehicle is equipped with a thermal fuse to protect the electric circuit. If the vehicle stops unexpectedly, turn the vehicle off and on to reset.

## 18 General Care

- Regularly inspect all vehicle parts to ensure they are in good working condition.
- Regularly inspect the charger, cord, plug, and other related parts for damage.
- Remove any damaged parts and immediately contact Customer Service or replacement parts. See Service on Page 22 for more information.
- DO NOT operate the vehicle if there are any damaged parts.
- Carefully clean the vehicle with a damp cloth and mild soap. Do not get water in or near any electrical parts. Do not wash the vehicle with a hose.
- Store the vehicle indoors or use a tarp to cover it. Keep away from stoves, heaters, or other sources of heat.



Completely read through the manual and troubleshooting guide before contacting Customer Service.

Problem	Potential Cause	Solution
Vehicle does not run	Battery is low	Recharge the battery
	Thermal fuse tripped	Reset fuse
	Loose wires or loose connectors	Ensure the battery connectors are securely attached. If wires are loose, contact Customer Service.
	Battery is dead	Contact Customer Service for replacement battery
	Electrical system is damaged	Contact Customer Service
	Motor is damaged	Contact Customer Service
Vehicle only runs for a short time	Undercharged battery	Make sure there is a secure connection when the battery is recharging. Recharge for at least 8-12 hours
	Overcharged battery	Never charge the battery for more than 30 hours
	Battery is old	Replace battery
Vehicle runs slowly	Battery is not fully charged	Ensure a secure connection when the battery is recharging.
	Battery is old	Contact Customer Service to order a replacement battery.
	Too much weight on vehicle	Reduce weight on vehicle Maximum: 50kg (110 lb)
	Harsh conditions	Operate the vehicle on level ground and safe surfaces

Problem	Potential Cause	Solution
Vehicle needs a push to start	Loose wires or loose connectors	Ensure the battery connectors are securely attached. If wires are loose, contact Customer Service.
	“Dead spot” on motor	A “dead spot” means electricity is not being delivered to the terminal. Contact Customer Service.
Cannot stop the vehicle	Electronic component is damaged	Contact Customer Service
Motor or gear box make grinding noises	Motor or gear damage	Contact Customer Service
Battery will not recharge	Charger is not plugged in	Plug the charger into a functioning wall outlet.
	Charger is not working	Call Customer Service for a replacement.
	Loose connector or loose adapter	Check that the connectors are securely plugged into each other.
Battery makes bubbling noise while recharging	This is normal	No action required
Battery makes noises and heats up when charging	This is normal	No action required

This device complies with part 15 of the FCC Rules. Operation is subject to the following two conditions: (1) this device may not cause harmful interference, and (2) this device must accept any interference received, including interference that may cause undesired operation.

This equipment has been tested and found to comply with the limits for a Class B digital device, pursuant to Part 15 of the FCC Rules. These limits are designed to provide reasonable protection against harmful interference in a residential installation.

This equipment generates, uses and can radiate radio frequency energy and, if not installed and used in accordance with the instructions, may cause harmful interference to radio communications. However, there is no guarantee that interference will not occur in a particular installation. If this equipment does cause harmful interference to radio or television reception, which can be determined by turning the equipment off and on, the user is encouraged to try to correct the interference by one or more of the following measures:

- Reorient or relocate the receiving antenna.
- Increase the distance between the equipment and the receiver.
- Consult dealer or an experienced radio/TV technician for help.
- Connect the equipment into an outlet on a circuit different from that to which the receiver is connected.
- Check the state or local requirements for the product before using the product.

**Caution:** Changes or modifications not expressly approved by the party responsible for compliance could void the user's authority to operate the equipment.

## **Do not return your product to the store. Contact Rollplay with questions.**

---

If your product requires service, or replacement parts, please contact Rollplay Customer Service.

HOURS: 8 AM - 5 PM EST. Monday - Friday.

Phone: 1-888-982-9309

Email: [customerservice@rollplay.com](mailto:customerservice@rollplay.com)

Web: [www.rollplay.com](http://www.rollplay.com)

For a list of available replacement parts, please visit [www.rollplay.com](http://www.rollplay.com).

**WE REQUIRE PROOF OF PURCHASE.** Please save your sales receipt and register your product at [www.rollplay.com](http://www.rollplay.com).

## Rollplay 12-Volt Limited Warranty

- One-year limited warranty (vehicle only) from the date of purchase with proof of purchase from a Rollplay certified retailer. This one-year limited warranty covers the ride-on vehicle against defects in materials and workmanship to the original purchaser. **Proof of purchase receipt from a Rollplay certified retailer is required.**
- Six-month limited warranty on the 12-Volt battery with proof of purchase from a Rollplay certified retailer. Rollplay ensures the original 12-Volt battery is warranted for 6 months from initial purchase of the vehicle from a certified retailer. **Proof of purchase receipt required.**
- This warranty covers normal use and does not cover the Rollplay vehicle or abuse, misuse, improper service or other causes not arising out of defects in materials or workmanship. Evidence of any attempt at consumer repair will void this warranty.
- This warranty does not cover, and is not intended to exclude any liability on the part of Rollplay, whether under this warranty or implied by law for any in director consequential damages for breach of warranty. Some states may not allow the exclusion or limitation so this limitation may not apply to you.

Should you need service or assistance with your vehicle during the warranty period:

- Please do not return vehicle to the store.
- Consult the troubleshooting guide in this manual and online at [www.rollplay.com](http://www.rollplay.com) or
- Call Rollplay Customer Service at 1-888-982-9309 may vary from state to state.

Note: This warranty gives you specific legal rights. You may also have other rights that may vary from state to state.

**Please save your original sales receipt.**

## 24 Product Registration

Fill out the form below and mail it to:

Rollplay Products  
1801 Commerce Dr.  
Piqua, OH 45356

OR fill out the form online at [www.rollplay.com](http://www.rollplay.com).

We will use the information provided only for your warranty. We will not sell, rent or share your personal information.

---

### Product Registration

First Name: \_\_\_\_\_ Last Name: \_\_\_\_\_ Title: \_\_\_\_\_

Address: \_\_\_\_\_

City: \_\_\_\_\_ State: \_\_\_\_\_ Zip Code: \_\_\_\_\_

Email: \_\_\_\_\_ Phone: \_\_\_\_\_

Date of Purchase: \_\_\_\_\_

The following product information is on the cover of the owner's manual.

Product Name: \_\_\_\_\_ Model Number: \_\_\_\_\_

Serial Number: \_\_\_\_\_ Place of Purchase: \_\_\_\_\_

Questions or comments? Contact us at [www.rollplay.com](http://www.rollplay.com) or 1-888-982-9309