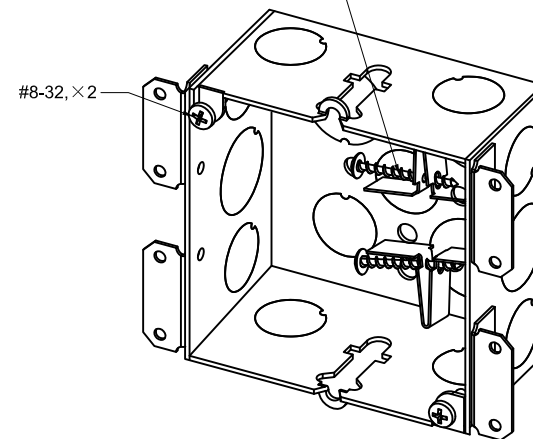
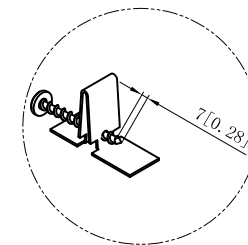
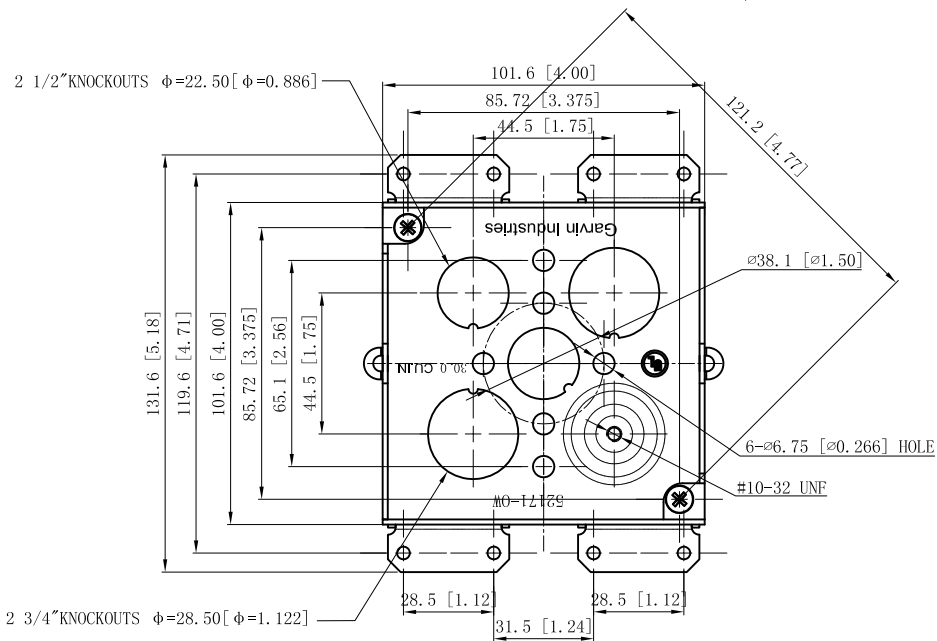
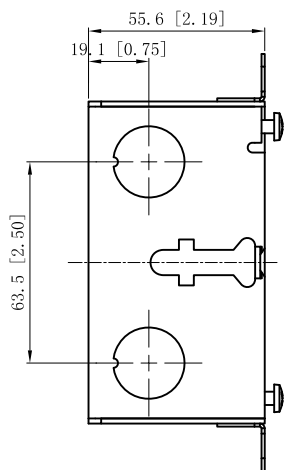
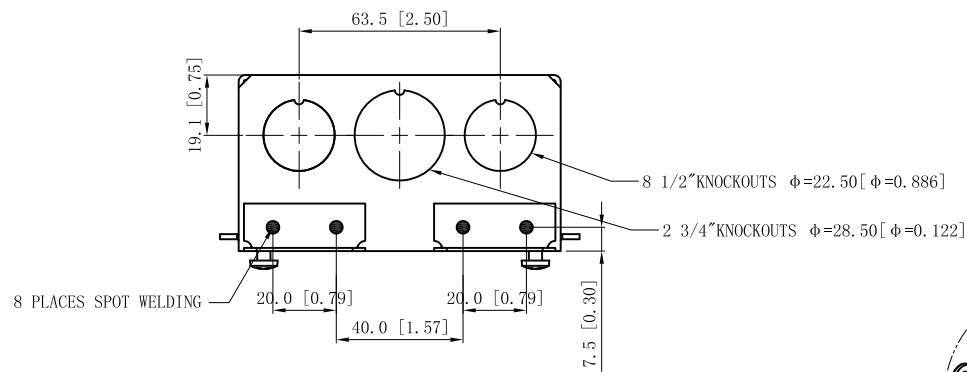


SIDES	BOTTOM
8 1/2" KNOCKOUTS	2 1/2" KNOCKOUTS
2 3/4" KNOCKOUTS	2 3/4" MOON KNOCKOUTS
	1 GROUD HUMP
2 PCS #8-32X1/2 Screws Installed	
2 PCS 6-20X1-3/4 Screws Installed	
Material:Steel-0.0625"-G60 Galvanized	



This data sheet is for reference only. GARVIN INDUSTRIES reserves the right to make changes to the design without prior notice.

DESCRIPTION
TRADE REFERENCE TERMS

STANDARD PACKING

<b>GARVIN INDUSTRIES</b>		
4" SQUARE BOXES 2-1/8" DEEP		
SIZE A4	DWG NO. 52171-OW	REV A
DATA SHEET		
www.garvinindustries.com		