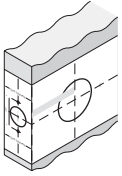


Installation Instructions for Deadbolt

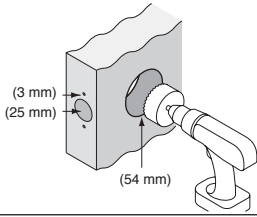
Step 1.

- Mark the Door as shown and use the template as guide.



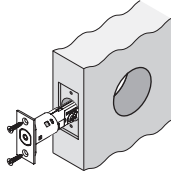
Step 2.

- Drill the holes as shown.



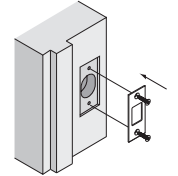
Step 3.

- Prepare rebate
- Install the latch and screw to tighten.



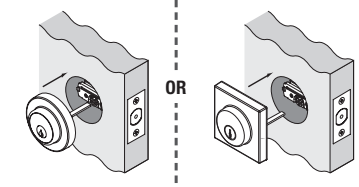
Step 4.

- Prepare rebate
- Install the strike and screw to tighten.



Step 5.

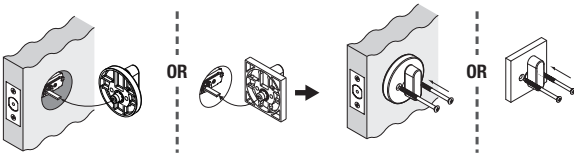
- Install the outside cylinder as shown.
- The drive tail is positioned horizontally.



Step 6.

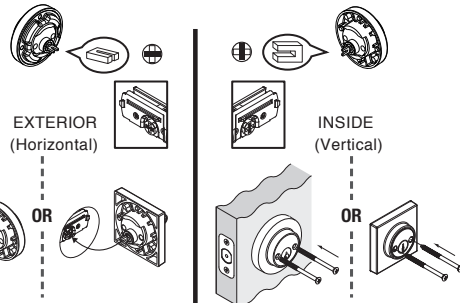
Install Thumbturn

- For Single Cylinder functions, please install the thumbturn as per diagram.



Install Cylinder

- For Double Cylinder functions, install the exterior and internal parts as shown in the diagram.

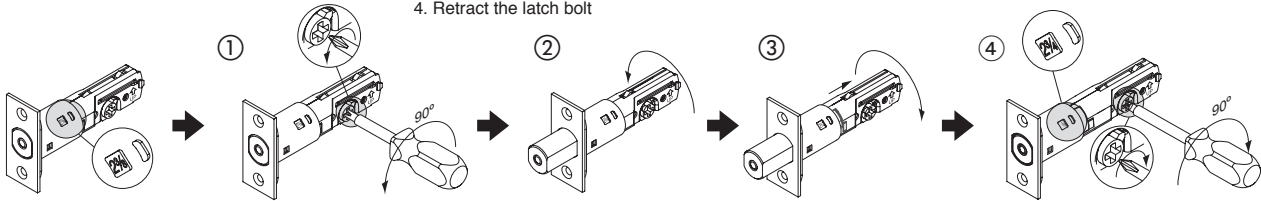


Step 7.

- Set the latch backset

Note: The latch is supplied set at 60mm (2-3/8"), to set the latch at 70mm (2-3/4"),

- Extend the latch bolt
- Rotate the rear of the latch body
- Pull the rear of the latch body to set at 70mm back set and then rotate to lock into place.
- Retract the latch bolt



NOTE: Carefully follow these instructions when installing. Screws to be tightened to a recommended 2.5Nm torque.



FOLD HERE

Mark centre-line of latch hole

Mark centre-line of latch hole

Fit here on door edge

54mm hole

BACKSET 60mm (2 3/8")

BACKSET 70mm (2 3/4")

Fit here on door edge

Installation template for deadbolt

Gainsborough

Gainsborough Hardware Industries Limited,
Melbourne, Australia. A.B.N. 1 J 4 6 1 1 4 J 1 4 F 4
www.gainsboroughhardware.com.au

DGA-A00E12-00
JUL '19

