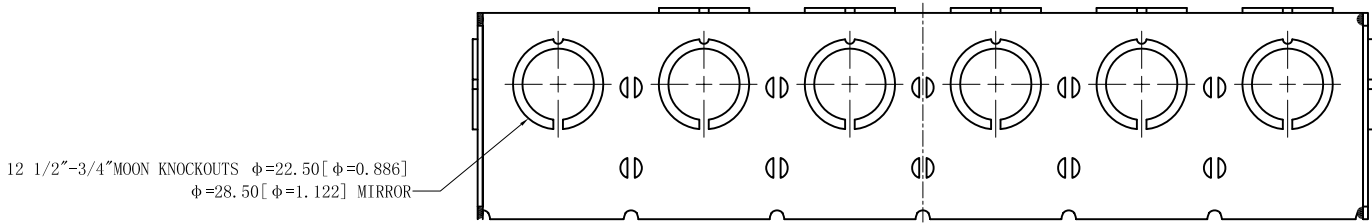
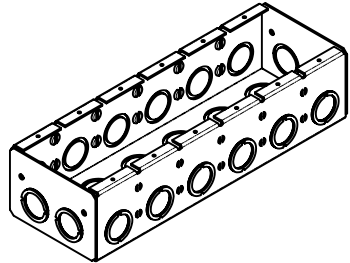
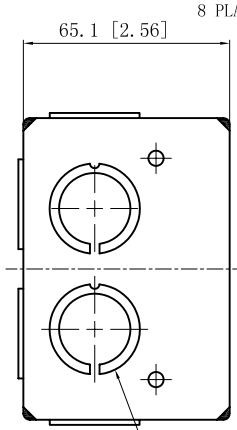


SIDES	BOTTOM
16 1/2"-3/4" MOON KNOCKOUTS	12 KNOCKOUTS
	12 1/2"-3/4" MOON KNOCKOUTS
Material: Steel-0.0625"-G60 Galvanized	

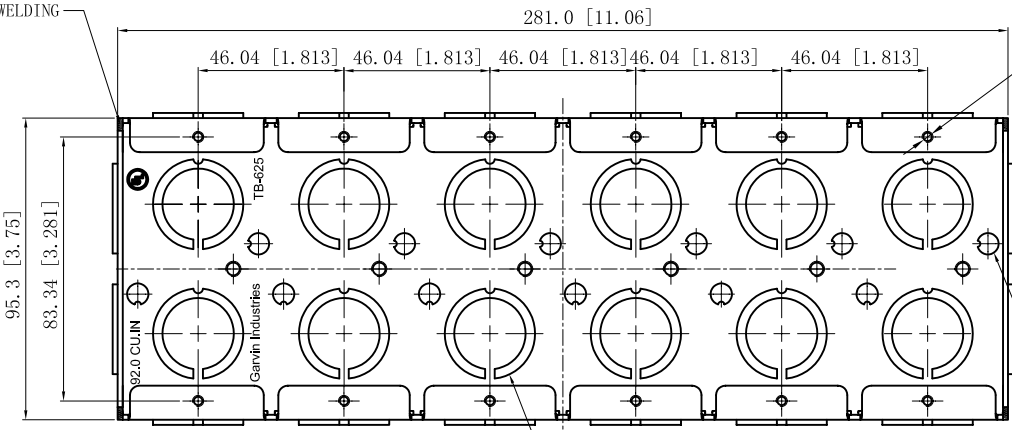


12 1/2"-3/4" MOON KNOCKOUTS $\phi=22.50$ [$\phi=0.886$]
 $\phi=28.50$ [$\phi=1.122$] MIRROR

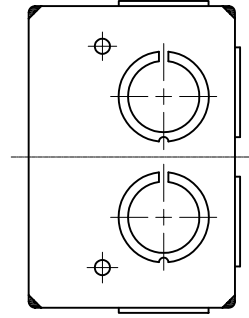


8 PLACES SPOT WELDING

4 1/2"-3/4" MOON KNOCKOUTS $\phi=22.50$ [$\phi=0.886$]
 $\phi=28.50$ [$\phi=1.122$] MIRROR



12-#6-32 UNC HOLE



12 1/2"-3/4" MOON KNOCKOUTS $\phi=22.50$ [$\phi=0.886$]
 $\phi=28.50$ [$\phi=1.122$]

12 KNOCKOUTS $\phi=6.75$ [$\phi=0.266$]

DESCRIPTION
TRADE REFERENCE TERMS

This data sheet is for reference only .GARVIN INDUSTRIES reserves the right to make changes to the design without prior notice.

STANDARD PACKING	GARVIN INDUSTRIES		
	TITLE SOLID MASONRY BOX 2-1/2" DEEP		
1 PCS	SIZE	DWG NO.	REV
	A4	TB-625	A
DATA SHEET			