

# CINEVIEW

NEFB26H | NEFB30H | Built-in electric fireplace insert



Discover the Cineview built-in electric fireplace insert—an all-in-one box solution that brings ease and elegance to your home. With its contemporary design, this fireplace allows you to choose either logs or black crystal media kit to personalize your space. Enjoy the ambiance with three flame colors and seven ember bed colors to create the perfect atmosphere. Installation is hassle-free with plug-and-play or hardwire options. Optional trims kits make it an ideal choice for enhancing existing masonry setups. Elevate your home's comfort and style with the Cineview built-in electric fireplace.

## Features

- Requires no venting for easy, cost-effective installations
- Decorative brick side panels
- Both logs and crystals are included in the box
- Optional trim kits available: standard 5" kits (26" & 30" models) and zero-clearance wood box trim kits (30" model only)
- ECO mode: runs at half heat – consuming less energy (2,500 BTUs)
- BOOST mode: heater at max heat with increased blower speed (5,000 BTUs)
- Up to 5,000 BTUs, 1,465 watts, 120V (can be hardwired)
- Available sizes (width): 26", 30"

## Customize

### Media:



Included: burnt oak log set and black crystal media

### Optional accessories:



Optional 3 piece trim



Optional 4 piece trim

### Flame colors:

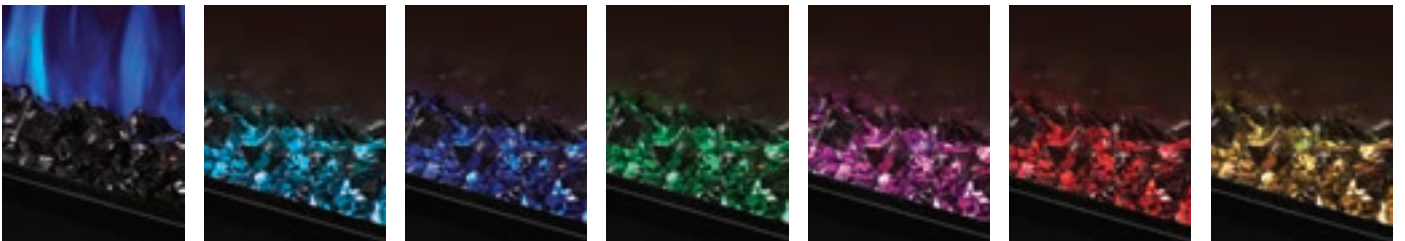


Orange

Blue

Combined

### Ember bed colors:



Black, Teal, Blue, Green, Purple, Red, and Topaz



## FIREPLACE DESIGN STUDIO

See your dream fireplace come to life in front of your eyes!  
Scan here to build your custom fireplace with available design options.



## Included controls

### Remote

Enjoy added convenience with the included remote—control every function of your fireplace, including power, heat, flame, and ember bed, from the comfort of your couch.

### Touch screen control panel

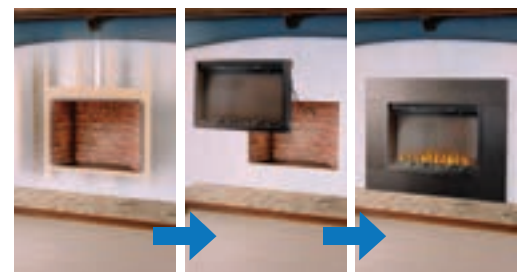
Effortlessly adjust your fireplace settings with the touch of a finger using our intuitive touch screen control panel.



## Innovations

### Zero clearance wood box trim kit (30" ONLY)

Effortlessly transform old wood fireplace boxes without costly renovations. Designed with adjustable feet for flexible installation, it ensures a seamless and hassle-free upgrade to your living space.



Install cutaway

Installing

Installed





Good

Better

Best

Premium



Woodland



Cineview



Element



Elevation Electric

Dimensions

Model No.	Width	Height	Depth
NEFB26H	26"	20 ¼"	7 ¾"
NEFB30H	30"	20 ¼"	7 ¾"



## Experience the Power of Fire

Napoleon's Power of Fire research has proved a fireplace can help reduce stress and stimulate your brain.

Scan to learn more about our research and the health benefits of fireplaces.



24 Napoleon Road, Barrie, Ontario, Canada L4M 0G8  
 103 Miller Drive, Crittenden, Kentucky, USA 41030  
 7200 Trans Canada Highway, Montreal, Quebec, Canada H4T 1A3



Consult your owner's manual for complete installation instructions and proper clearances to combustible materials. Check all local and national building codes and gas regulations. All specifications are subject to change without prior notice due to on-going product improvements. Products may not be exactly as shown. Flame height and activity is influenced by varying vent configurations and may not appear as shown. Napoleon is a registered trademark of Wolf Steel Group Inc. EnerGuide - A Canadian efficiency standard based on frequent, short start-up and cool-down cycles. All appliances sold in Canada are subject to this EnerGuide rating system. AFUE - A US efficiency standard (Department of Energy) based on extended on/off cycles, more typical of fireplace usage. Steady State - Reflects the highest possible overall heating efficiency.

Napoleon is a trademark of Wolf Steel Group Inc. and is used under license.  
 Napoléon est une marque de commerce du Groupe Wolf Steel inc. et est utilisée sous licence.

ADBRN1-CINEVIEW