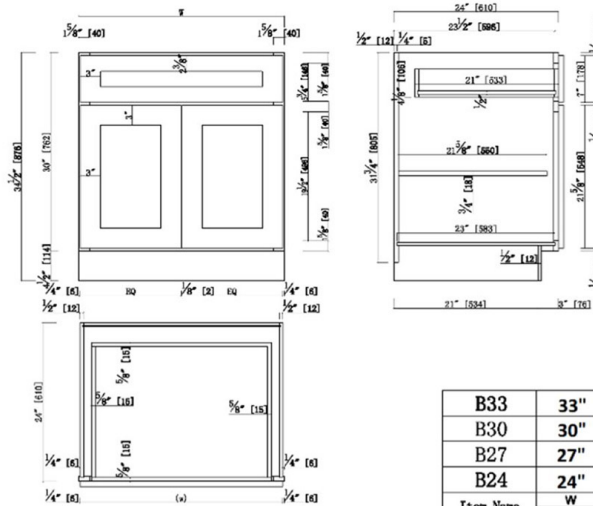


## Brookings Fully Assembled Shaker Base Kitchen Cabinet 27x34.5x24 Espresso



### SPECIFICATIONS

**MATERIAL CONSTRUCTION:** Wood  
**WOOD SPECIES:** Maple  
**ASSEMBLED DIMENSIONS:** 34.5" H x 27" L x 24" D  
**ASSEMBLED WEIGHT:** 85 lbs.  
**KITCHEN CABINET TYPE:** Base  
**MOUNTING TYPE:** Floor Mount  
**CONSTRUCTION TYPE:** Face Frame  
**HINGE STYLE:** Soft Close  
**DOOR STYLE:** 2 Wood shaker doors  
**NUMBER OF DRAWERS:** 1  
**DRAWER DIMENSIONS 1:** 4.17" H x 21" L x 23.46" D  
**DRAWER DIMENSIONS 2:** N/A  
**DRAWER DIMENSIONS 3:** N/A  
**DWR BOX MATERIAL:** Solid Wood  
**DWR CONSTRUCTION:** Dove Tail  
**DWR GLIDE:** STD Easy Glide  
**FAKE DWR QTY:** 0  
**FAKE DWR LOCATION:** N/A

**NUMBER OF SHELVES:** 1  
**SHELF STYLE:** Flat  
**ADJUSTABLE SHELVES:** Yes  
**SHELF ADJUSTIBILITY INCREMENTS:** 2.5"  
**SHELF DIMENSIONS:** 25.5" W x 21.625" D  
**SHELF THICKNESS:** 0.75"  
**SHELF MATERIAL:** Plywood  
**FACE FRAME MATERIAL:** Solid Maple  
**SIDES MATERIAL:** Plywood  
**BOTTOM MATERIAL:** Plywood  
**BACK PANEL MATERIAL:** Plywood  
**BACK BRACE MATERIAL:** Wood  
**TOE KICK INSET WIDTH:** 3

**WARRANTY:** 1-Year limited warranty  
**LEGAL FOR SALE IN CALIFORNIA:** Yes  
**CARB COMPLIANT:** CARB Phase 2  
**TSCA TITLE VI COMPLIANT:** Yes



**TYPE:**  
**JOB:**  
**ORDER CODE:**  
**APPROVALS:**