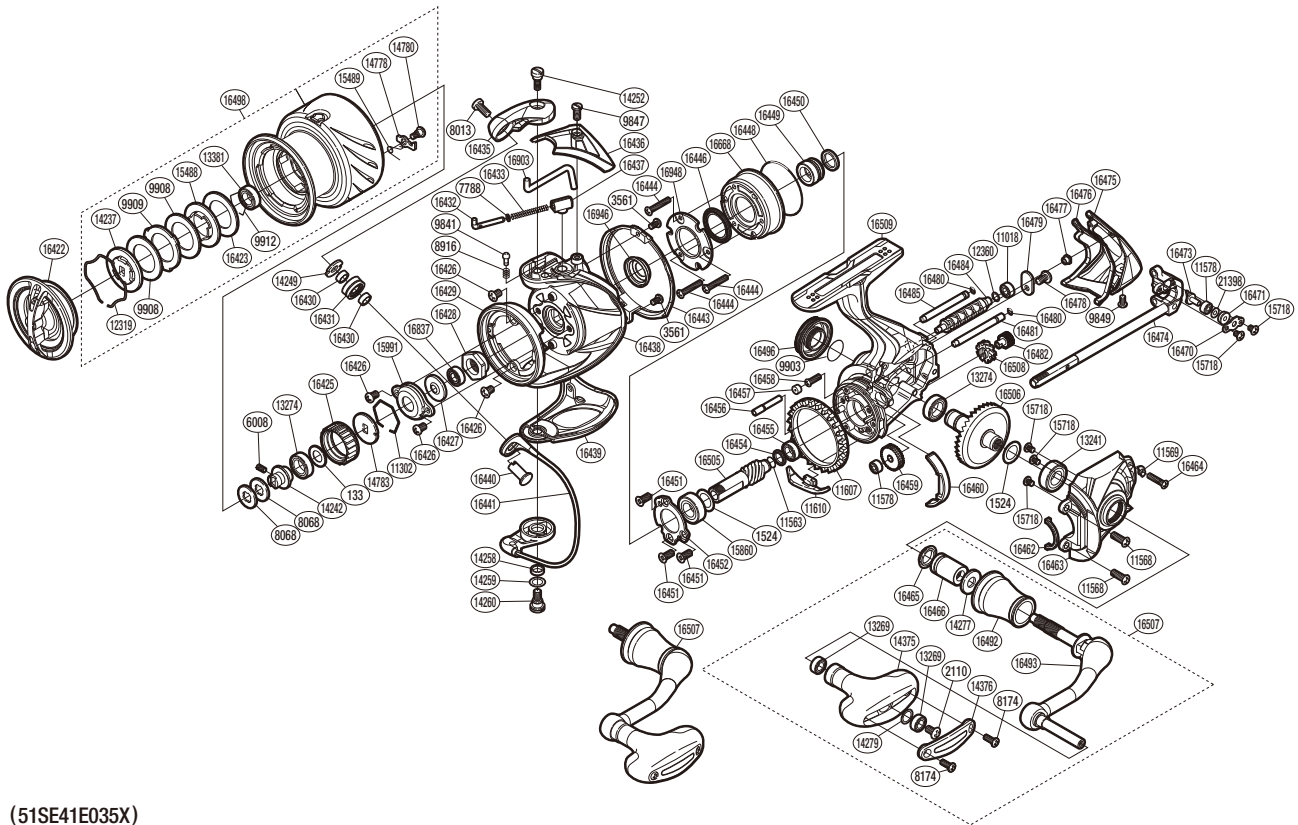


SHIMANO

STELLA

STL-C3000XG



(51SE41E035X)

#	Part No.	Description	#	Part No.	Description	#	Part No.	Description
133	102VD	Anti-Reverse Pawl Spacer	14375	1040S	Handle Knob	16458	10LPJ	Screw
1524	10JDC	Washer	14376	108X1	Handle Knob I.D. Plate	16459	10HBQ	Idle Gear
2110	103E9	Screw	14778	10388	Drag Click	16460	10J3N	Friction Ring Spacer
3561	10MT4	Screw	14780	10A6F	Screw	16462	10CBC	Flange Water Proof
6008	10PN2	Set Screw	14783	103PC	Spool Support	16463	104D4	Side Cover
7788	1064R	Spring Guide (A) Support	15488	10BBQ	Key Washer	16464	10LV4	Screw
8013	10K40	Screw	15489	10BQE	Drag Click Spring	16465	10PXU	Handle Shaft Seal
8068	10BU7	Spool Washer	15718	1055G	Screw	16466	10PQE	Handle Shaft Cover B
8174	103NM	Screw	15860	104JH	Ball Bearing	16470	10HAG	Oscillating Pawl Cover
8916	10CH0	Click Spring	15991	1076P	Rotor Nut Lock Plate	16471	10JXQ	Oscillating Slider Bushing
9841	10CHA	Click Pin	16422	102ER	Drag Knob	16473	106VL	Oscillating Pawl
9847	10CYU	Screw	16423	10C1D	Drag Washer	16474	102J0	Main Shaft Assembly
9849	106ZG	Screw	16425	107PP	Drag Click Ratchet	16475	10NL4	Rear Protector
9903	108WA	O Ring	16426	103LB	Screw	16476	107HJ	Rear Shield
9908	102ZP	Drag Washer	16427	107L2	Bearing Water Proof	16477	10AYN	Rear Protector Collar
9909	10BCP	Eared Washer	16428	10814	Rotor Nut	16478	103EB	Screw
9912	10GEW	Bearing Retainer	16429	10JHK	Rotor Brim	16479	10ATB	Worm Shaft Retainer
11018	10PDA	Ball Bearing	16430	10GAR	Bearing Spacer	16480	10JAB	O Ring
11302	107V3	Ratchet Spring	16431	10KXZ	Line Roller	16481	104MB	Oscillating Guide B
11563	10CJV	Worm Shaft Ring	16432	105YY	Bail Spring Guide A	16482	106VQ	Idle Gear B S
11568	10M2C	Screw	16433	105R4	Bail Spring	16484	10687	Worm Shaft
11569	10C2G	Screw Washer	16435	10KLG	Bail Arm	16485	1035L	Oscillating Guide A
11578	10PC0	Ball Bearing	16436	10885	Bail Spring Cover	16492	10C4E	Handle Shaft Cover
11607	104FU	Friction Ring	16437	107A9	Bail Spring Seat	16493	103DN	Handle Shank Assembly
11610	107DZ	Bail Trip Strike	16438	10Q1P	Rotor	16496	10N4H	Handle Screw Cap
12319	10B8J	Drag Washers Retainer	16439	10MNJ	Bail Hold Support Guard	16498	109FH	Spool Assembly
12360	10J7K	Washer	16440	10Q3J	Line Roller Support	16505	10C20	Pinion Gear
13241	104JD	Ball Bearing	16441	1073K	Bail Assembly	16506	10EKQ	Drive Gear
13269	104VX	Ball Bearing	16443	10748	Rotor Guard	16507	10N7V	Handle Assembly
13274	104PP	Ball Bearing	16444	10MTG	Screw	16508	10CQH	Idle Gear B L
13381	104JT	Ball Bearing	16446	10MH3	Roller Clutch Water Proof	16509	1037E	Body
14237	10JJV	Key Washer	16448	10MLT	O Ring	16668	10QPJ	Roller Clutch Assembly
14242	10LTR	Bearing Bushing	16449	107S5	Roller Clutch Inner	16837	103B1	Main Shaft Spacer
14249	1079U	Line Roller Plate	16450	10H4G	Roller Clutch Inner Spacer	16903	106KU	Bail Trip Lever
14252	109GS	Screw	16451	10ML6	Screw	16946	103SG	Rotor Ring
14258	10K55	Bail Trip Cam Bushing	16452	10593	Bearing Retainer	16948	10NHU	Roller Clutch Reinforce
14259	10G6C	Washer	16454	10J6F	Pinion Gear Spacer	21398	10RKQ	Washer
14260	109GU	Screw	16455	104K4	Ball Bearing			
14277	10FMF	Large Handle Shank Washer	16456	10CLA	Idle Gear B Shaft			
14279	10G8G	Washer	16457	10AYS	Body Flange Seal	9811	10PBS	Reel Seat Spacer (Accessory)

Please note that the number of adjusting washers may not be the same as shown in the exploded views.
(Adjustment will vary with each individual product.)