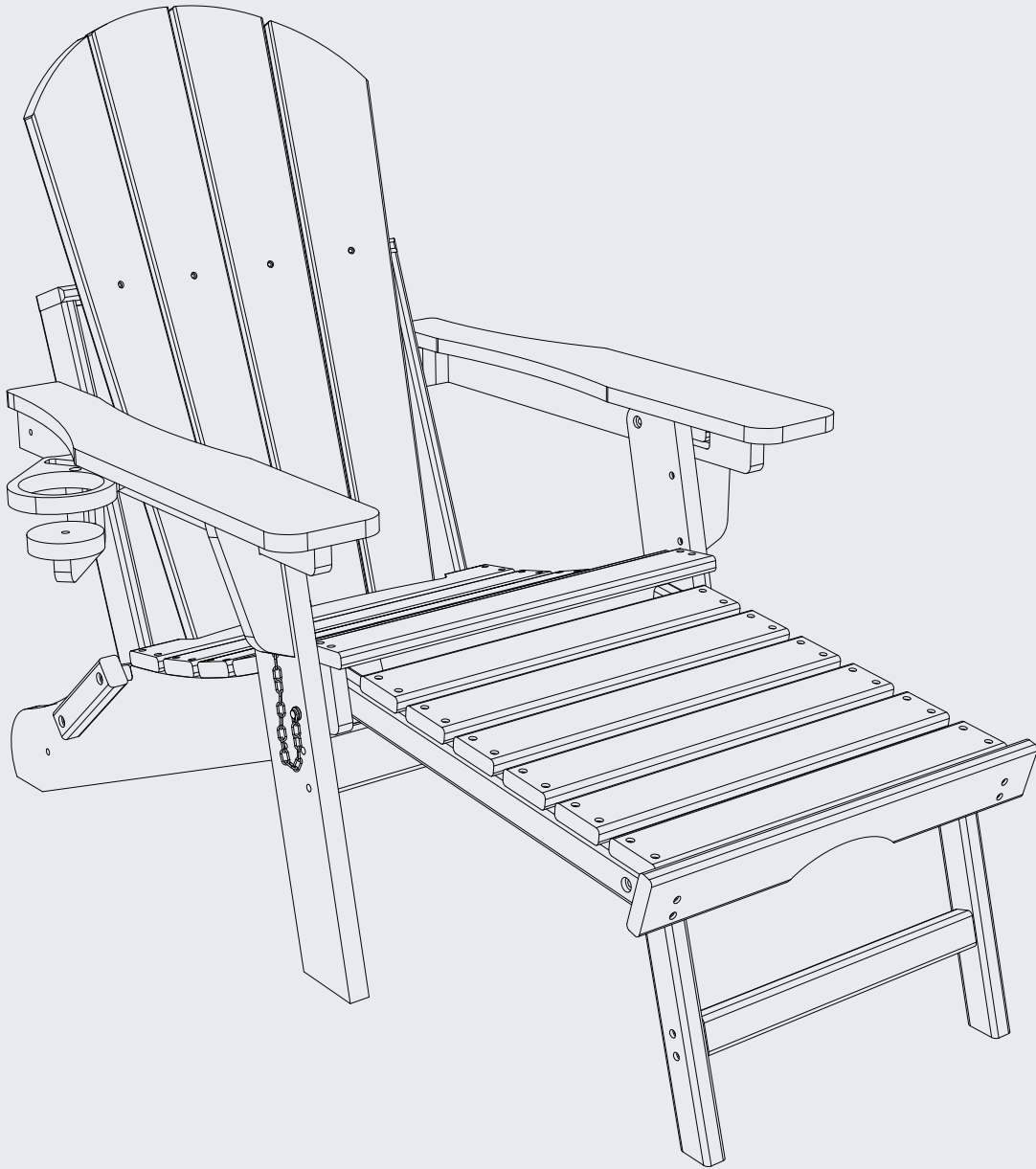


INSTRUCTION MANUAL



Outdoor Folding Adjustable Adirondack Chair
with Cup Holder & Hideaway Ottoman

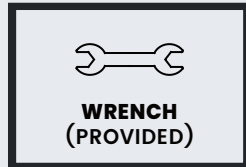
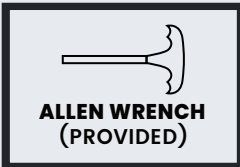
V1.0

! NOTICE

Do not overtighten screws. (Insert all screws before tightening screws.)

- Please do not exceed the weight limitations of this item.
- Do not stand on or use any part of this item as a step ladder.
- Firmly secure all bolts, screws and nuts before use.
- Reconfirm that all bolts, screws, and nuts are secure every 90 days.
- Do not use or store this item in the proximity of open flame or flammable/combustible chemicals.
- Be aware that some parts are heavy and have sharp edges.
- Be very careful when folding chair to avoid smashing your hands or fingers.

TOOLS REQUIRED



CHAIR
330 LBS
CAPACITY

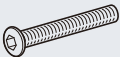
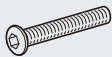

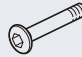







1 PERSON
ASSEMBLY

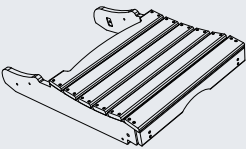
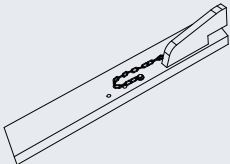
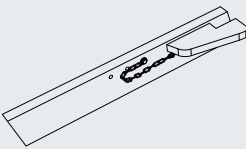
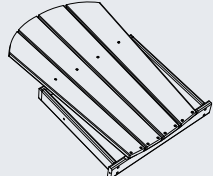


UP TO 30 MIN.
ASSEMBLY

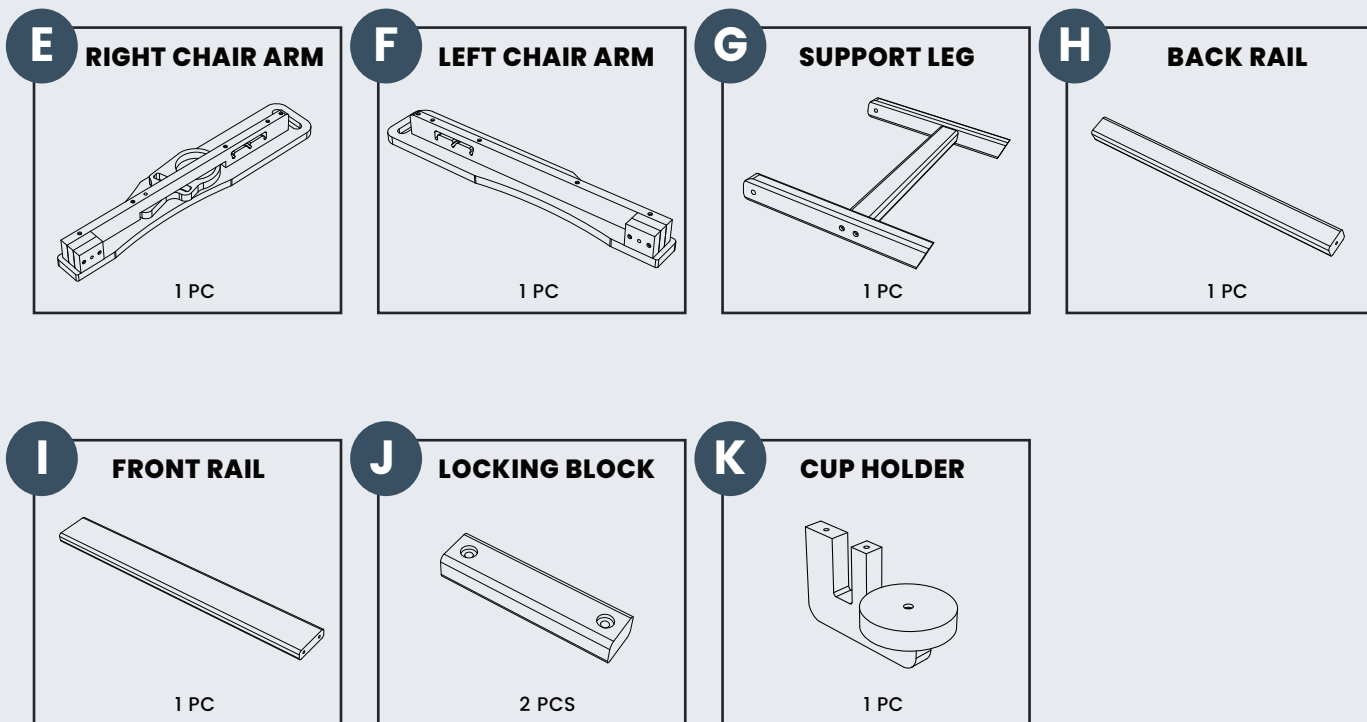
HARDWARE

1 BOLT M6 x 90mm  2 PCS	2 BOLT M6 x 55mm  4 PCS	3 BOLT M6 x 50mm  2 PCS	4 BOLT M6 x 50mm  2 PCS	5 SCREW ST6.3 x 50mm  8 PCS
6 SCREW ST6.3 x 40mm  2 PCS	7 M6 NUT  8 PCS	8 M6 NUT  2 PCS	9 M6 WASHER  10 PCS	

PARTS

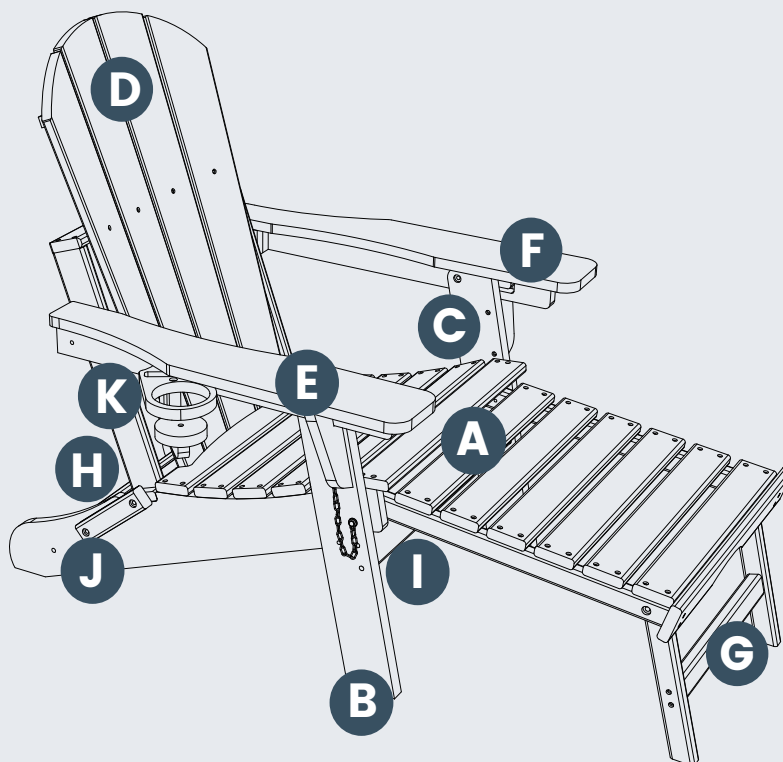
A CHAIR SEAT  1 PC	B RIGHT CHAIR LEG  1 PC	C LEFT CHAIR LEG  1 PC	D CHAIR BACKREST  1 PC
------------------------------------------------------------------------------------------------------------------------------	-----------------------------------------------------------------------------------------------------------------------------------	-----------------------------------------------------------------------------------------------------------------------------------	------------------------------------------------------------------------------------------------------------------------------------

PARTS



PRODUCT ASSEMBLY - OVERALL VIEW

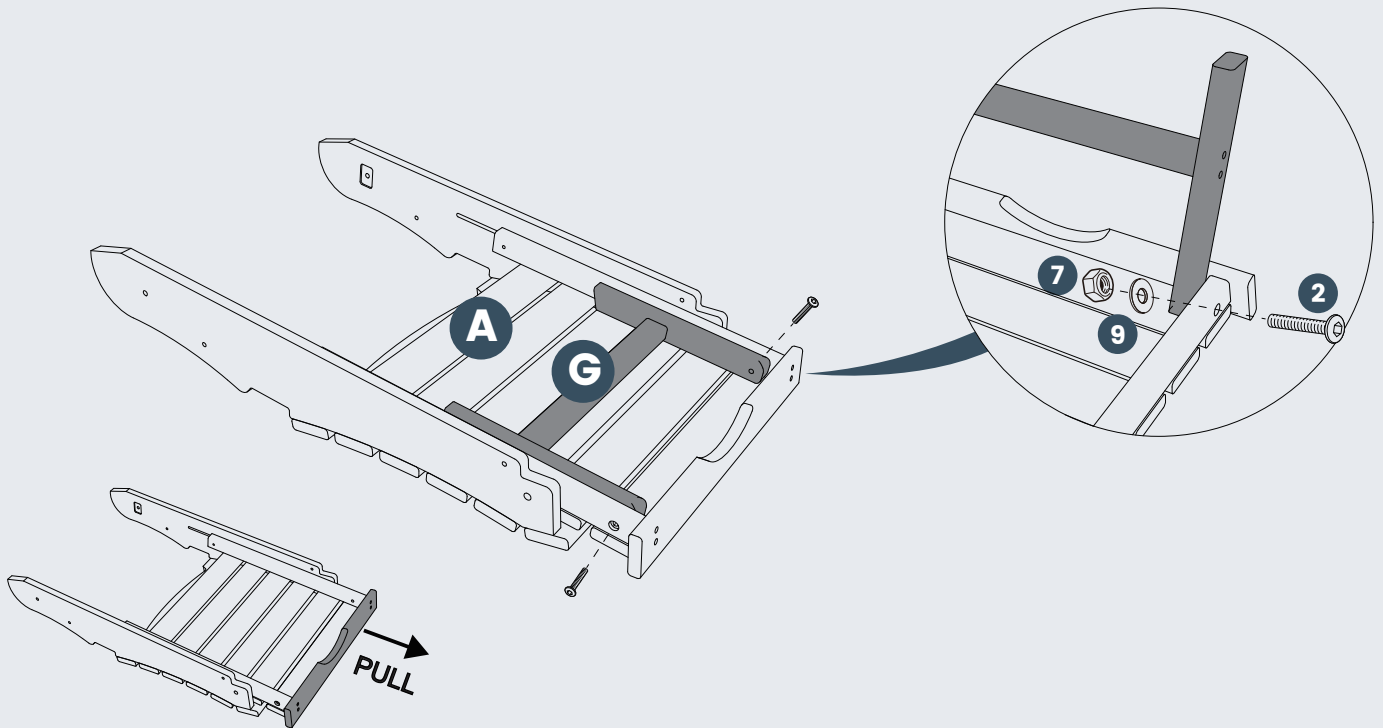
Look at following overall view of this chair and learn the exact position of each part to be assembled.



PRODUCT ASSEMBLY

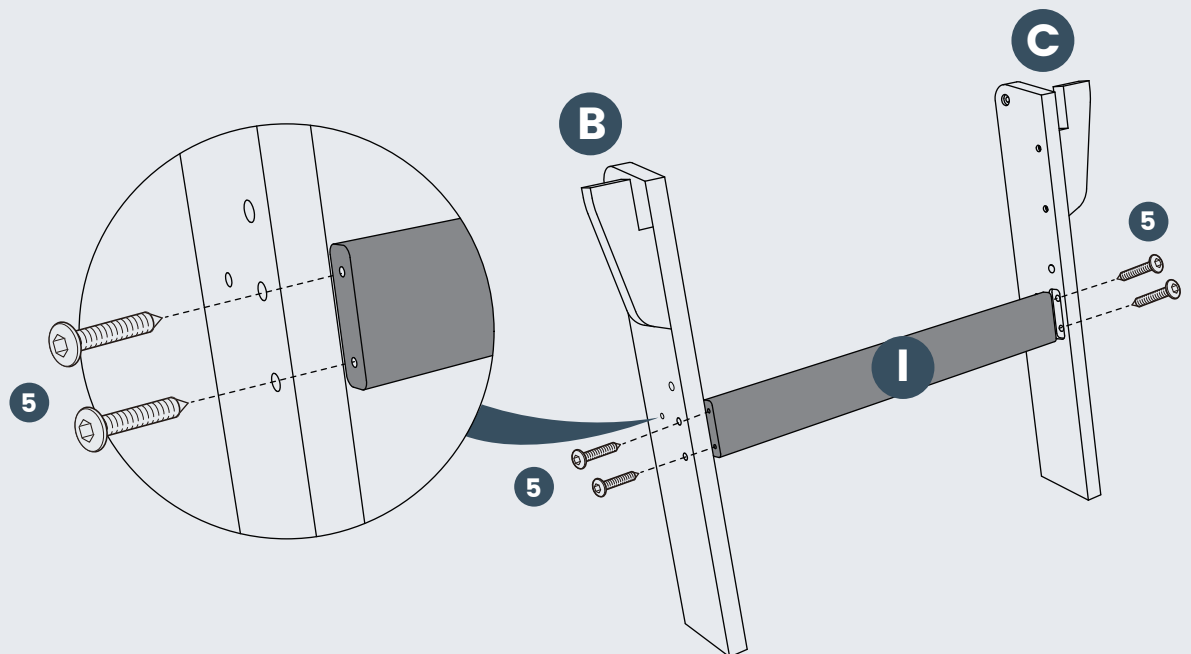
1

Attach **Part G Support Leg** to **Part A Chair Seat** with 2 pcs of **Hardware #2 Bolt** and **Hardware #9 Washer** and **Hardware #7 Nut**.



2

Attach **Part I Front Rail** to **Part B Right Chair Leg** and **Part C Left Chair Leg** with 4pcs of **Hardware #5 Screw**.

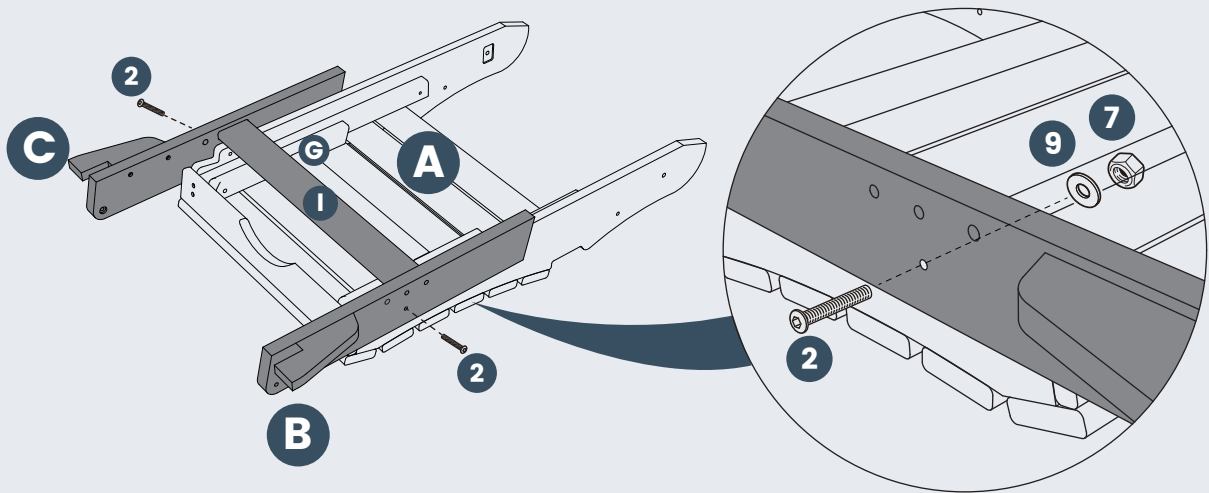


PRODUCT ASSEMBLY

3

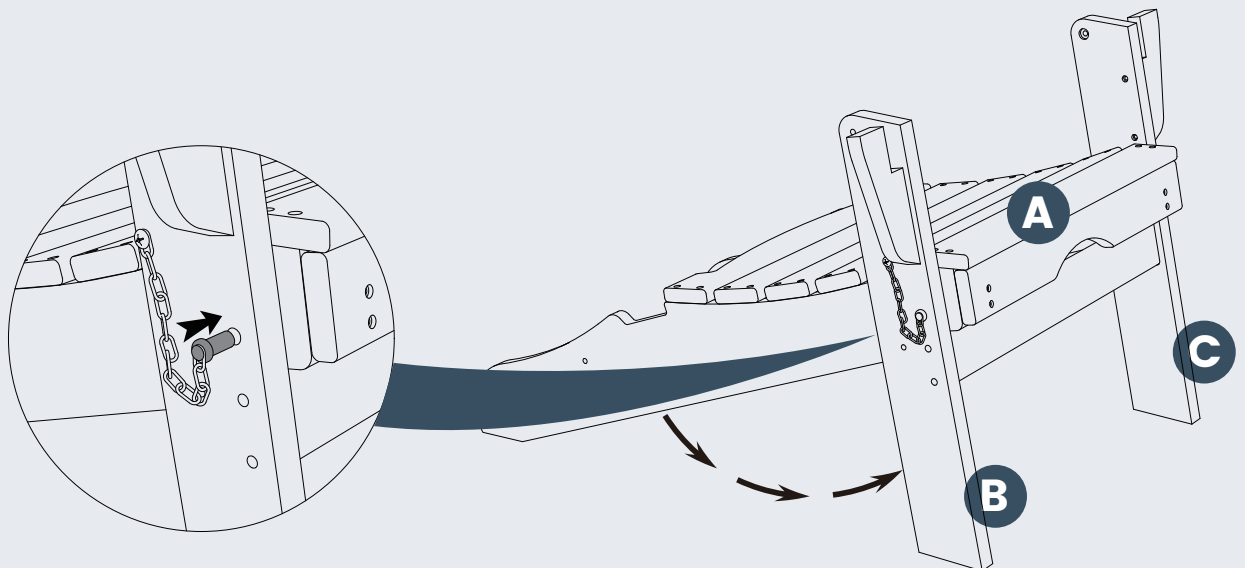
Connect the finished part of Step 2 to the finished part of Step 1 with 2 pcs of **Hardware #2 Bolt** and **Hardware #9 Washer** and **Hardware #7 Nut**.

Do not tighten the bolts too much at this step.



4

Place the steel pins into both legs to lock them in place.



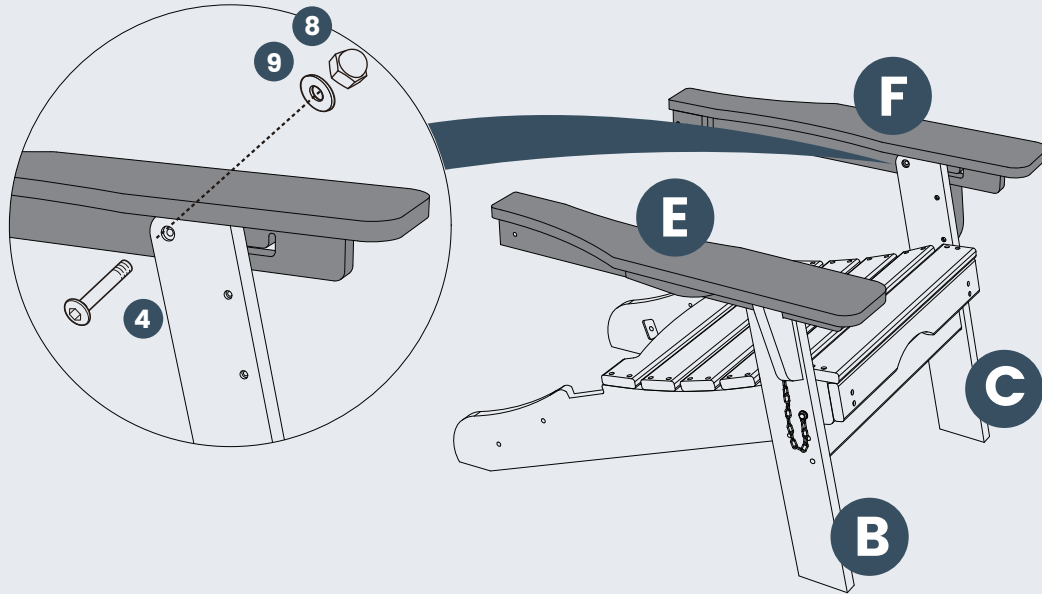
PRODUCT ASSEMBLY

5

Attach **Part F Left Chair Arm** to **Part C Left Chair Leg** with 1 pc of **Hardware #4 Bolt** and **Hardware #9 Washer** and **Hardware #8 Nut**.

Do same to **Part E Right Chair Arm** and **Part B Right Chair Leg**.

Do not tighten the bolts too much at this step.

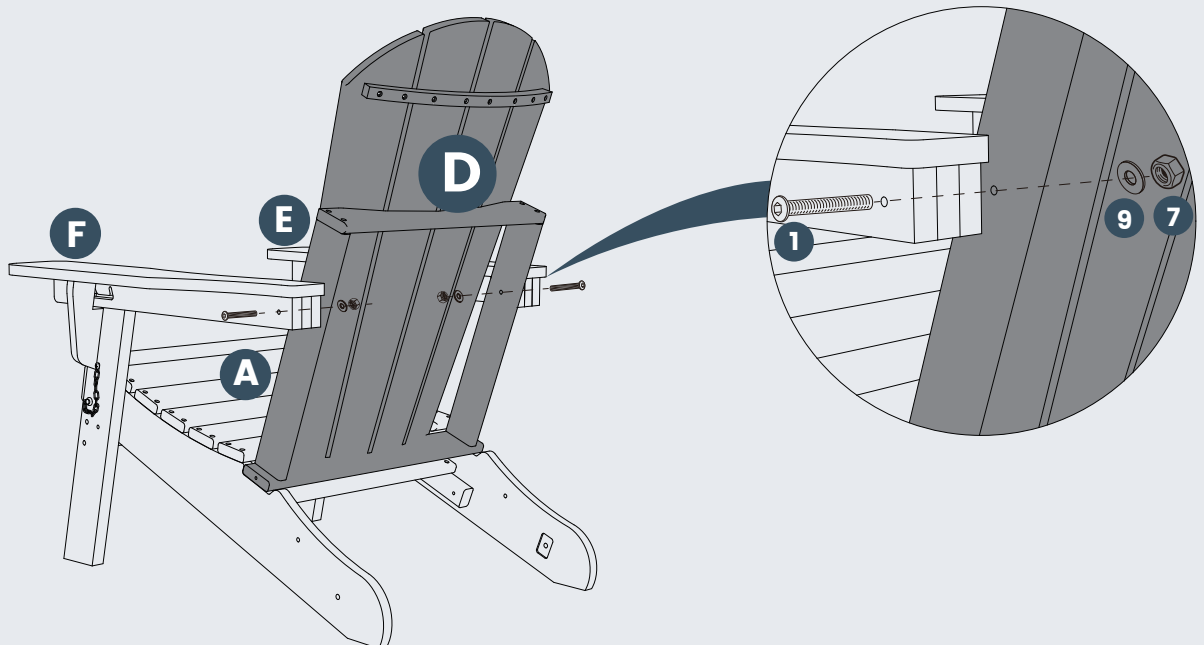


6

Fix **Part D Chair Backrest** into **Part A Chair Seat** and then attach **Part D Chair Backrest** to **Part F Left Chair Arm** with 1 pc of **Hardware #1 Bolt** and **Hardware #9 Washer** and **Hardware #7 Nut**.

Do same to **Part D Chair Backrest** and **Part E Right Chair Arm**.

Do not tighten the bolts too much at this step.

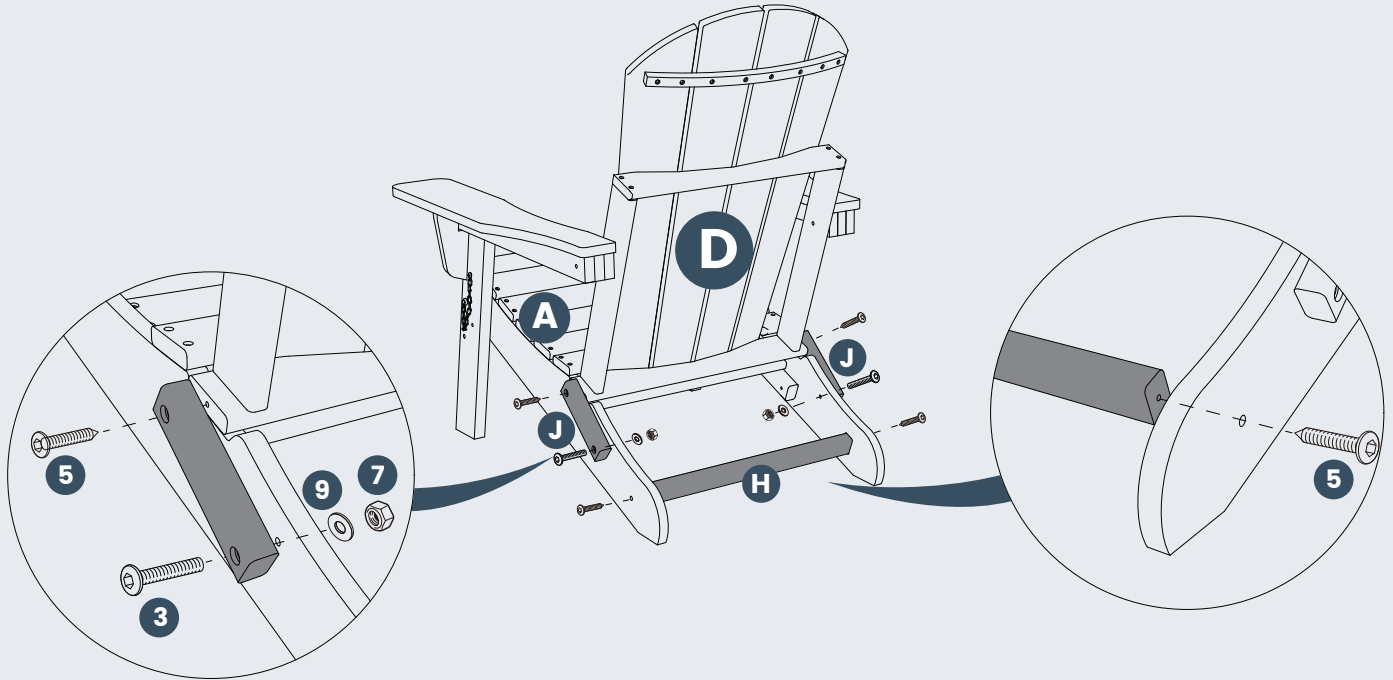


PRODUCT ASSEMBLY

7

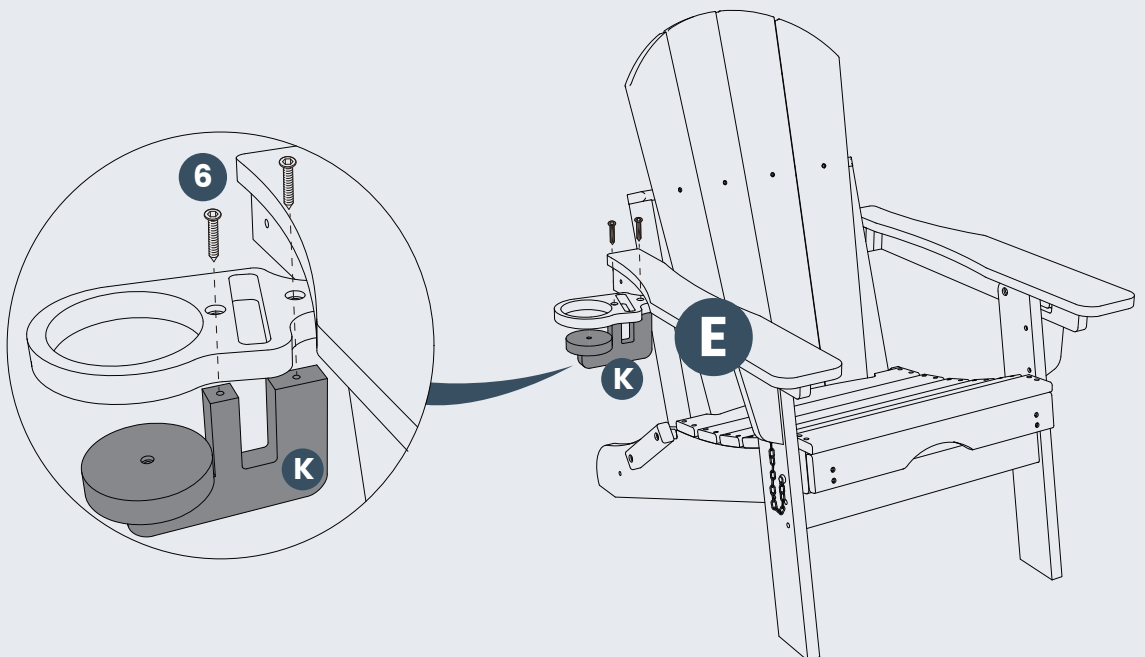
Attach **Part J Locking Block** to **Part D Chair Backrest** (both sides) with 2 pcs of **Hardware #5 Screw** and attach **Part J Locking Block** to **Part A Chair Seat** (both sides) with 2 pcs of **Hardware #3 Bolt** and **Hardware #9 Washer** and **Hardware #7 Nut**.

Attach **Part H Back Rail** to **Part A Chair Seat** with 2 pcs of **Hardware #5 Screw**.



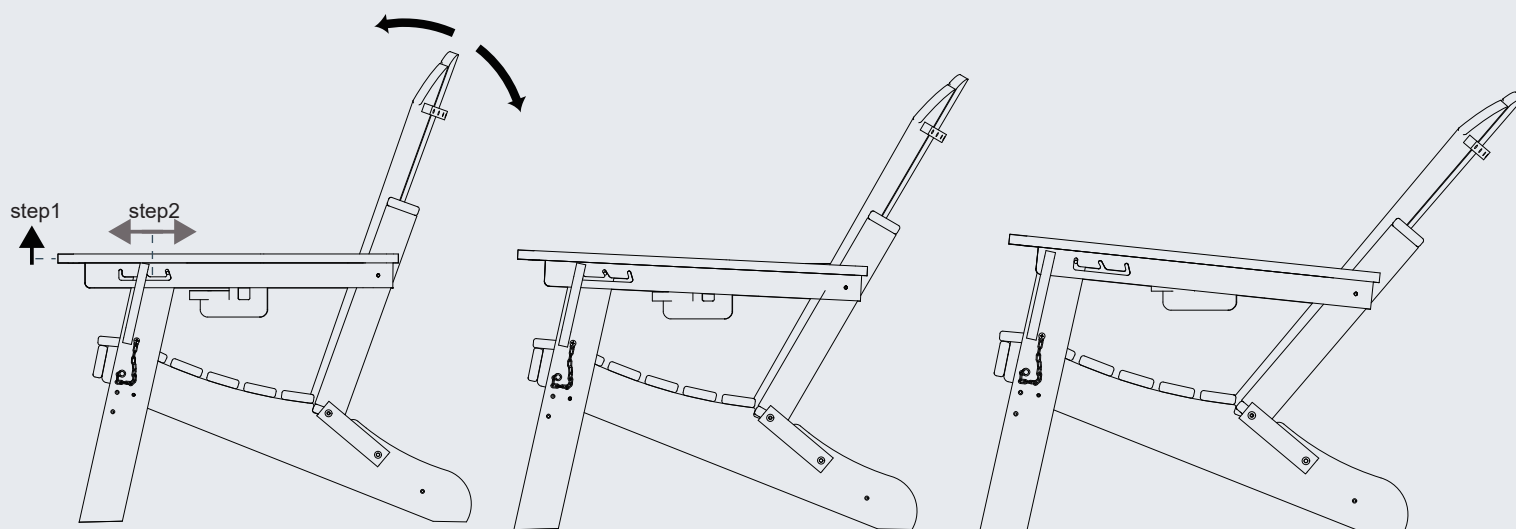
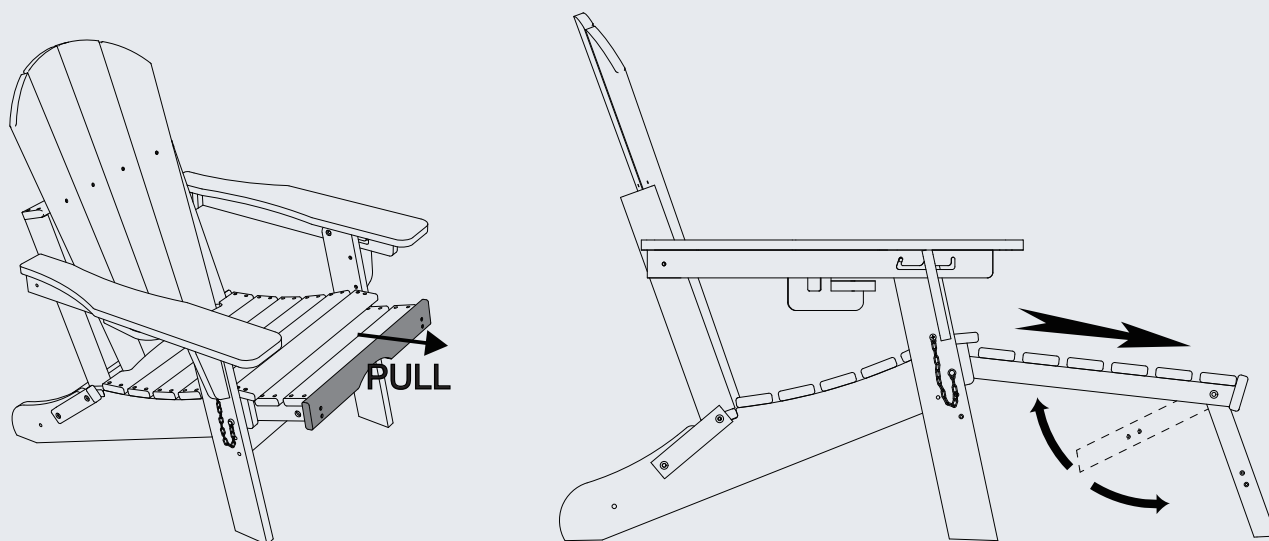
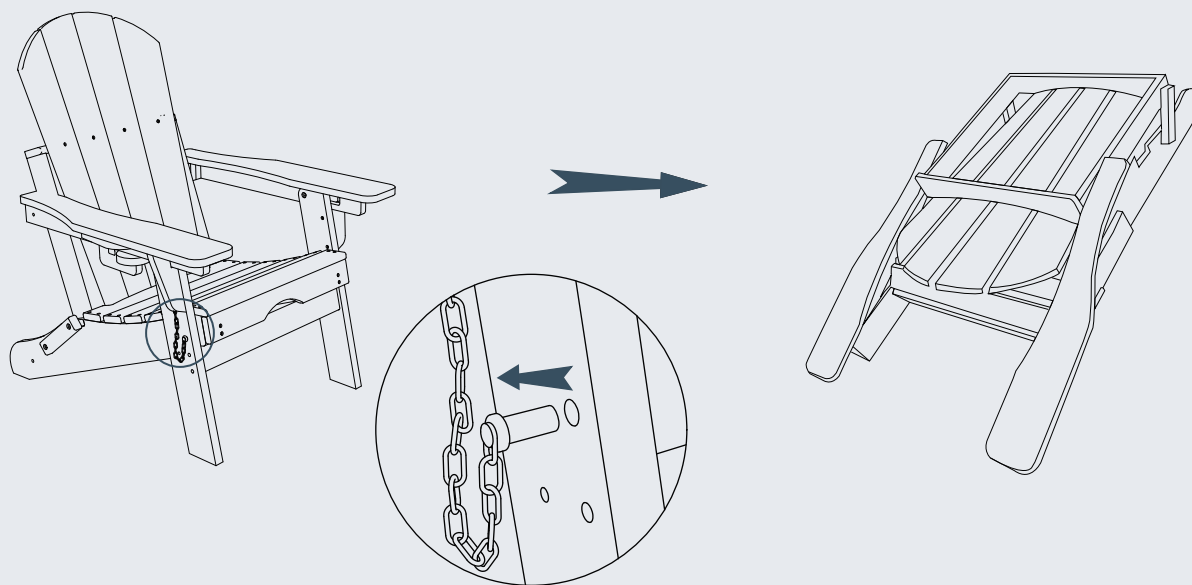
8

Attach **Part K Cup Holder** to **Part E Right Chair Arm** with 2 pcs of **Hardware #6 Screw**. Tighten all screws after assembly is complete.



Congratulations! You finished the assembly of this Adirondack chair.

Pull the steel pins out of both legs to fold the chair as below.



CLEANING TIPS

REGULAR CLEAN: Use a mixture of warm water and mild soap. Gently scrub the surface with a soft bristle brush to remove any dirt or stains.

QUICK CLEAN: You can simply wipe down the furniture with a damp cloth.

Regular cleaning not only preserves the aesthetic appeal of your furniture, but also helps extend its lifespan.