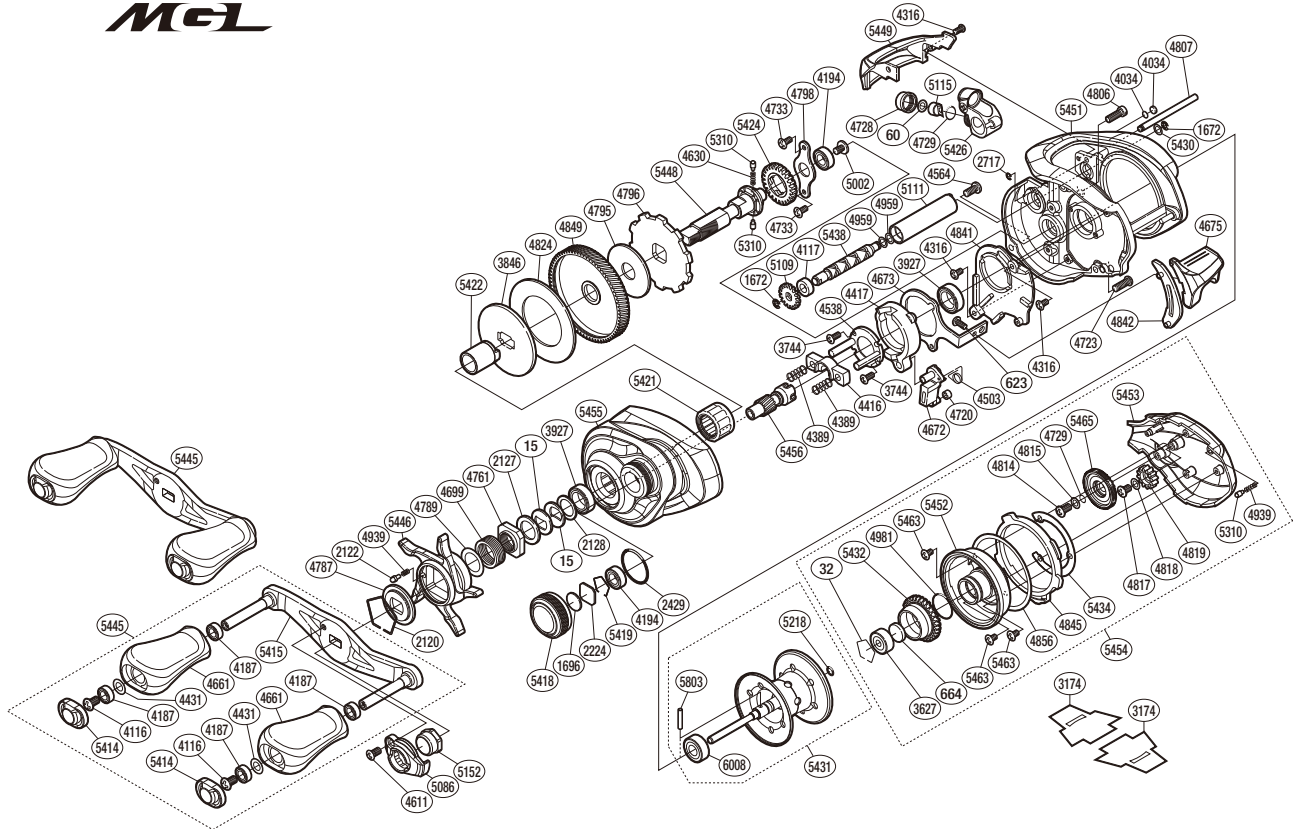


SHIMANO

Metanium MGL

META MGL-HGL



(51RH961151X)

| # | Part No. | Description | # | Part No. | Description | # | Part No. | Description |
|------|----------|----------------------|------|----------|--------------------------|------|----------|------------------------------|
| 15 | 10D60 | Drag Spring Washer | 4673 | 10QGG | Clutch Plate | 5152 | 10FFG | Handle Nut |
| 32 | 10GEW | Bearing Retainer | 4675 | 10MWE | Quick-Fire li Clutch Bar | 5218 | 10EZ7 | O Ring |
| 60 | 10CFW | Spacer | 4699 | 10A71 | Star Drag Spring | 5310 | 10HJG | Idle Gear Pin |
| 623 | 103C0 | Screw | 4720 | 1048C | Clutch Pawl Bushing | 5414 | 10TNK | Handle Knob Seal |
| 664 | 1057S | Spacer B | 4723 | 103CG | Screw | 5415 | 101GH | Handle Shank Assembly |
| 1672 | 105NC | E Lock | 4728 | 10FJD | Pawl Cap | 5418 | 10TMK | Cast Control Cap |
| 1696 | 10896 | Cast Control Spacer | 4729 | 108WQ | O Ring | 5419 | 10R0Q | Bearing Retainer |
| 2120 | 10KXV | Click Plate Retainer | 4733 | 10LVD | Screw | 5421 | 10TM8 | Roller Clutch Bearing |
| 2122 | 10BT0 | Click Pin | 4761 | 10A0C | Star Drag Nut | 5422 | 10TMS | Roller Clutch Inner Tube |
| 2127 | 10J1N | Star Drag Spacer | 4787 | 10J1Y | Star Drag Click Plate | 5424 | 10TQ5 | Idle Gear |
| 2128 | 105PW | Bearing Washer | 4789 | 10HHM | Washer | 5426 | 10NYJ | Line Guide |
| 2224 | 1085F | Spool Tension Spacer | 4795 | 10CJ1 | Drag Washer | 5430 | 10GA0 | Washer |
| 2429 | 108WK | O Ring | 4796 | 10D6X | Anti-Reverse Ratchet | 5431 | 101XV | Spool Assembly(With Bearing) |
| 2717 | 105NB | E Lock | 4798 | 109T2 | Drive Shaft Retainer | 5432 | 101S2 | Brake Pipe Gear |
| 3627 | 105C0 | Ball Bearing | 4806 | 10M2E | Screw | 5434 | 108AW | Washer |
| 3744 | 10LVH | Screw | 4807 | 10GUE | Level Wind Guide | 5438 | 10TPR | Worm Shaft |
| 3846 | 10D3N | Key Washer | 4814 | 103LE | Screw | 5445 | 10TR1 | Handle Assembly |
| 3927 | 10EX8 | Ball Bearing | 4815 | 10GFB | Washer | 5446 | 10TN1 | Star Drag |
| 4034 | 108Q2 | Anti-Thrust Washer | 4817 | 103L7 | Screw | 5448 | 10TMV | Drive Shaft |
| 4116 | 103E9 | Screw | 4818 | 10G6W | Washer | 5449 | 10TPV | Level Wind Protector |
| 4117 | 10PXV | Bushing | 4819 | 10CLF | Idle Gear | 5451 | 101S6 | Frame |
| 4187 | 104VX | Ball Bearing | 4824 | 106XS | Drag Washer | 5452 | 101S4 | Brake Case |
| 4194 | 105BP | Ball Bearing | 4841 | 10BVK | Clutch Guard | 5453 | 10195 | Right Side Plate |
| 4316 | 10MT2 | Screw | 4842 | 1096Z | Clutch Bar Guide | 5454 | 101S1 | Right Side Plate Assembly |
| 4389 | 104BU | Yoke Spring | 4845 | 10BAG | Side Plate Cam Lever | 5455 | 101GC | Left Side Plate |
| 4416 | 10471 | Yoke | 4849 | 10CM5 | Drive Gear | 5456 | 10TQ2 | Pinion Gear |
| 4417 | 10KSC | Clutch Cam | 4856 | 104MZ | Washer | 5463 | 103N7 | Screw |
| 4431 | 10G8G | Washer | 4939 | 10988 | Click Spring | 5465 | 101UK | Br Dial |
| 4503 | 104CQ | Clutch Pawl Spring | 4959 | 10GFJ | Washer | 5803 | 10MD0 | Spool Clutch Pin |
| 4538 | 10F42 | Clutch Cam Retainer | 4981 | 10LA8 | O Ring | 6008 | 10TMG | Ball Bearing |
| 4564 | 10LZD | Screw | 5002 | 10PVU | Screw | | | |
| 4611 | 103EE | Screw | 5086 | 10Q5S | Handle Retainer | | | |
| 4630 | 10JDX | Idle Gear Spring | 5109 | 10FNX | Idle Gear | | | |
| 4661 | 1032A | Handle Knob | 5111 | 10NFW | Level Wind Guard | 3174 | 10PBQ | Reel Seat Spacer (Accessory) |
| 4672 | 105ZV | Clutch Pawl | 5115 | 10FFU | Line Guide Pawl | 4692 | 10LQ0 | B-100 Oil (Accessory) |

Please note that the number of adjusting washers may not be the same as shown in the exploded views.
(Adjustment will vary with each individual product.)

(241205)_005