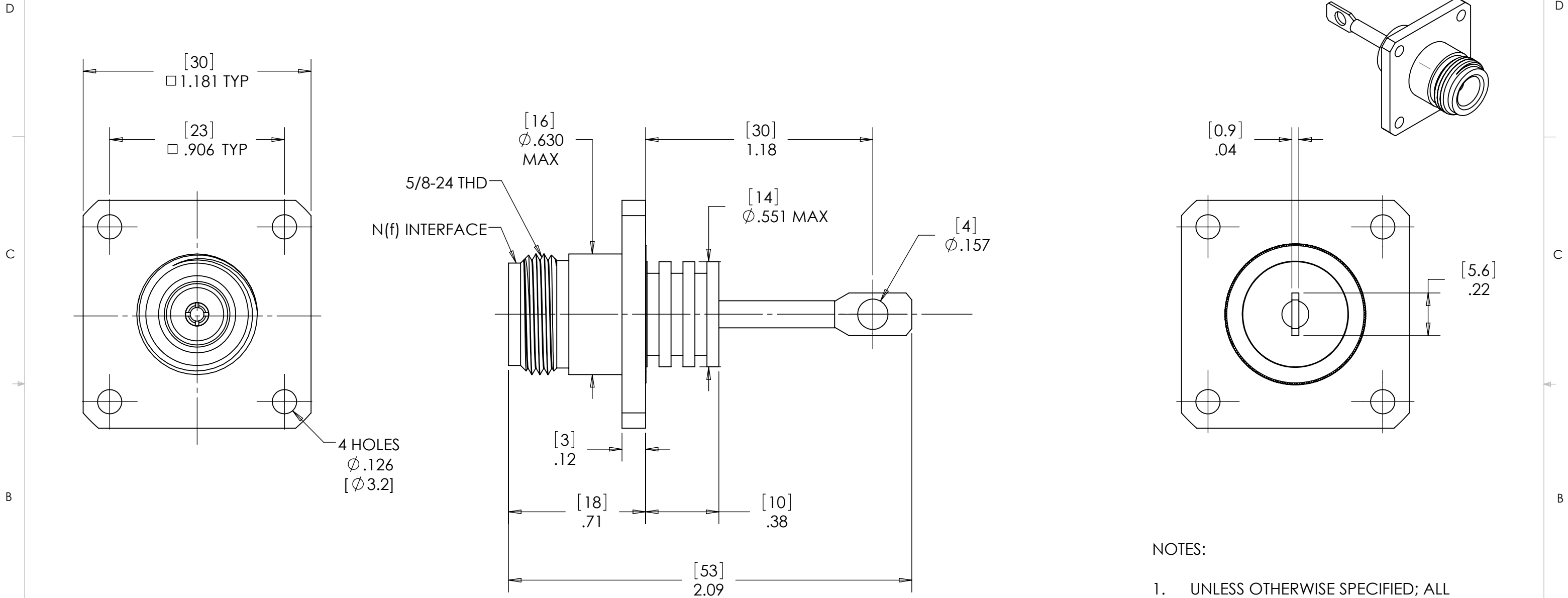


This document, including the design, configuration and mechanical features revealed herein are the sole, confidential and proprietary property of TRU Corporation. Reproduction or use thereof, in whole or part, is prohibited without the prior written consent of TRU Corporation.

REV.	DESCRIPTION	DATE	APPROVED
-	ORIGINAL ISSUE	01/13/12	TRC
A	CHANGE PER ECO 4152	01/19/12	TRC




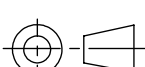
ENGINEERING DATA

MATERIAL:
INSULATOR: TEFLON
CONTACT: BERYLLIUM COPPER
OTHER METAL PARTS: BRASS

FINISH:
CONTACT: SILVER PLATED
OTHER METAL PARTS: NICKEL PLATED

NOTES:

- UNLESS OTHERWISE SPECIFIED; ALL DIMENSIONS ARE FOR REFERENCE ONLY.
- PRODUCT MARKING: TRU(logo) TRU-11888

MATERIAL	DO NOT SCALE DRAWING		DRAWN TRC	DATE 01/09/12	<div>TRU CORPORATION 245 LYNNFIELD STREET, PEABODY, MA 01960 The Custom Interconnect Leader™</div>				
	UNLESS OTHERWISE SPECIFIED: DIMENSIONS ARE IN INCHES		ENG APPR. TRC	DATE 01/13/12					
	TOLERANCES: FRACTIONS: ±1/64 .XX : ±.01 .XXX: ±.005 ANGLES: ±1/2°		MFG APPR.	DATE					
	MACHINED SURFACES:		OTHER APPR. AM	DATE 01/12/12					
COMMENTS:	<div>63/</div>		THIRD ANGLE PROJECTION		SIZE B		DWG. NO. TRU-11888		REV A
					CAGE CODE: 92180		SCALE: 2:1	SHEET 1 OF 1	
surface area: sq inch		weight: lbs							