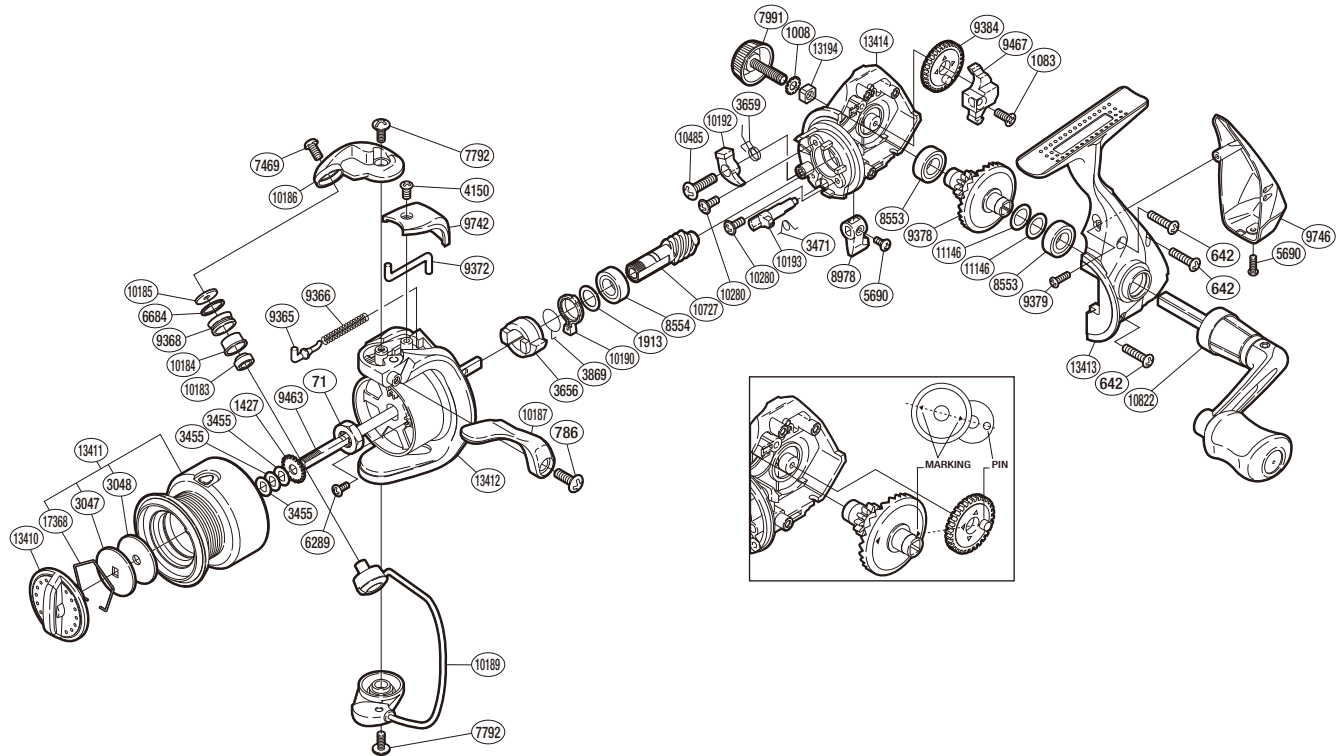


SHIMANO

SYNCOPATE

SC-1000FG



(51SE551006U)

#	Part No.	Description	#	Part No.	Description	#	Part No.	Description
71	10MSQ	Rotor Nut	7792	103D8	Screw	10186	10DEW	Bail Arm
642	10M35	Screw	7991	10P4L	Handle Screw Cap	10187	10FQT	Quick-fire li Trigger
786	103J1	Screw	8553	107AT	Ball Bearing	10189	10Q9N	Bail Assembly
1008	105N5	Handle Lock Washer	8554	107FE	Ball Bearing	10190	10JVV	Anti-Reverse Lock Out
1083	10ML8	Screw	8978	10JG2	Anti-Reverse Lever	10192	10DCV	Anti-Reverse Pawl
1427	103MG	Spool Support	9365	105LS	Bail Spring Guide	10193	10DAB	Anti-Reverse Cam
1913	10JVL	Washer	9366	10FVB	Bail Spring	10280	10L6C	Screw
3047	10B9H	Key Washer	9368	10JLF	Line Roller	10485	10LLN	Screw
3048	1031C	Drag Washer	9372	10F1A	Bail Trip Lever	10727	10LUQ	Pinion Gear
3455	10BXN	Spool Washer	9378	10M4G	Drive Gear	10822	10J8V	Handle Assembly
3471	1057E	Anti-Reverse Cam Spring	9379	10L1U	Screw	11146	10JDB	Washer
3656	107ZH	Anti-Reverse Ratchet	9384	104WY	Oscillating Gear	13194	104NX	Handle Screw Lock
3659	10675	Anti-Reverse Pawl Spring	9463	10PL9	Main Shaft	13410	10M7A	Drag Knob
3869	10L5G	Anti-Reverse Lock Out Spring	9467	104KV	Oscillating Slider	13411	1034D	Spool Assembly
4150	103KS	Screw	9742	10DEA	Bail Spring Cover	13412	10QFR	Rotor
5690	10MPW	Screw	9746	10AN2	Rear Protector	13413	10N0Y	Side Cover
6289	10MPL	Screw	10183	10K66	Ball Bearing	13414	10AXM	Body
6684	10KFD	Line Roller Spacer	10184	10PFH	Line Roller Bushing	17368	10MZM	Drag Washers Retainer
7469	10PMJ	Screw	10185	10PJF	Line Roller Washer			

Please note that the number of adjusting washers may not be the same as shown in the exploded views.
(Adjustment will vary with each individual product.)

(230827)_003