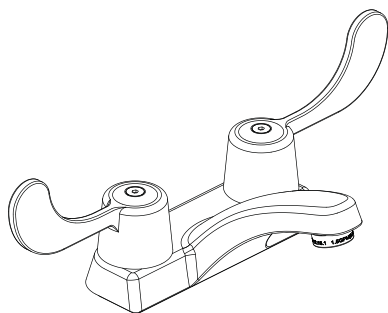


Instructions for Models:

SC-4074-LD
SC-4074-E-LD



Need Help?

For additional assistance or service call:

SPEAKMAN Company
400 Anchor Mill Road
New Castle, DE 19720

PHONE: 800-537-2107
EMAIL: customerservice@speakman.com
WEB: www.speakman.com

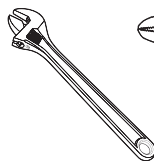
92-SC-4074-R3

What You Need To Know:

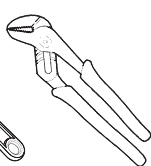
Tools:

Required:

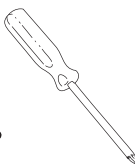
* Adjustable
Wrench



* Groove Joint
Plier



* Phillips
Screwdriver



* Teflon Tape

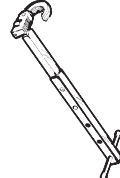


Helpful:

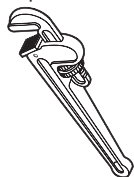
* Supply Lines



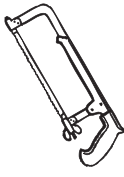
* Basin Wrench



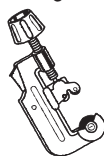
* Pipe Wrench



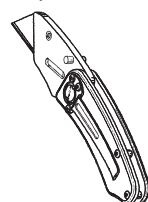
* Hacksaw



* Tubing Cutter



* Utility Knife



* Eye Protection



What You Need To Know:

Important Notes:

Be sure to read instructions thoroughly before beginning installation. Do not overtighten any connections or damage may occur. This faucet has an operating range of 20-80 psi.

Safety Tips:

Cover your drain to prevent loss of parts.
Be sure to wear eye protection while cutting pipe.

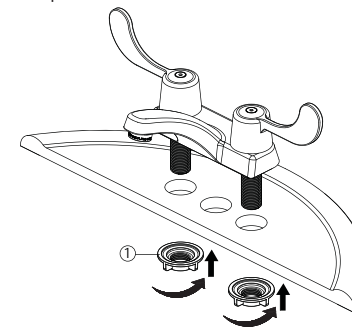
Maintenance:

Your new Lavatory Faucet is designed for years of trouble-free performance. Keep it looking new by cleaning it periodically with a soft cloth. Avoid abrasive cleaners, steel wool and harsh chemicals as these will dull the finish and void your warranty.

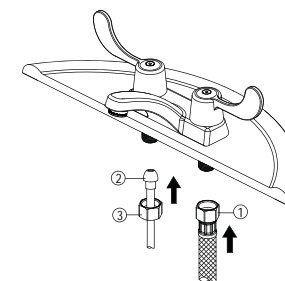
Outlet Flow Rate:

1.5 gpm aerator (installed in faucet).
0.5 gpm spray outlet (included in box).
1.2 gpm aerator (-E models only)

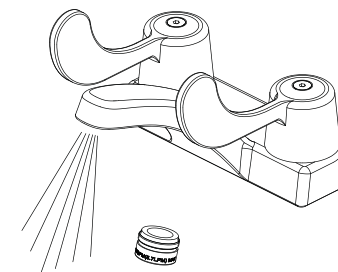
- 1 Shut off water supplies. Remove old faucet. Place faucet through mounting holes in sink. Secure faucet to sink using mounting nuts (1) provided.

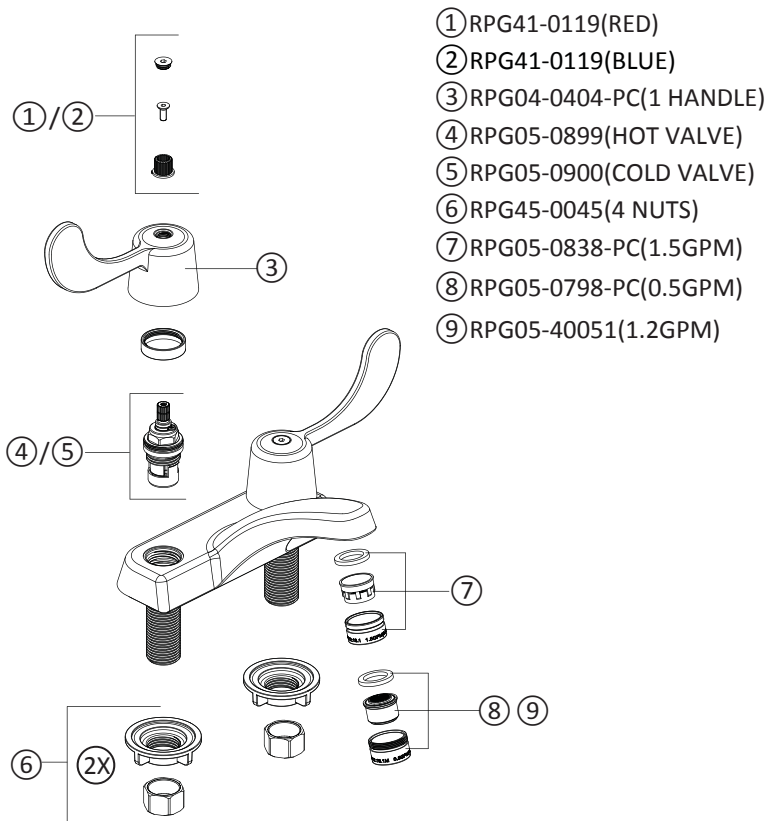


- 2 Make connections to water lines. Use 1/2" IPS faucet connections (1) or use the coupling nuts (3) with 3/8" O.D. ball-nose risers (2). Use wrenches to tighten connections. Do not overtighten.



- 3 **IMPORTANT:** After installation is completed, remove aerator. Turn on water supply and allow both hot and cold water to run for at least one minute each. While water is running, check for leaks. Replace aerator or install 0.5gpm spray outlet.





- ① RPG41-0119(RED)
- ② RPG41-0119(BLUE)
- ③ RPG04-0404-PC(1 HANDLE)
- ④ RPG05-0899(HOT VALVE)
- ⑤ RPG05-0900(COLD VALVE)
- ⑥ RPG45-0045(4 NUTS)
- ⑦ RPG05-0838-PC(1.5GPM)
- ⑧ RPG05-0798-PC(0.5GPM)
- ⑨ RPG05-40051(1.2GPM)

