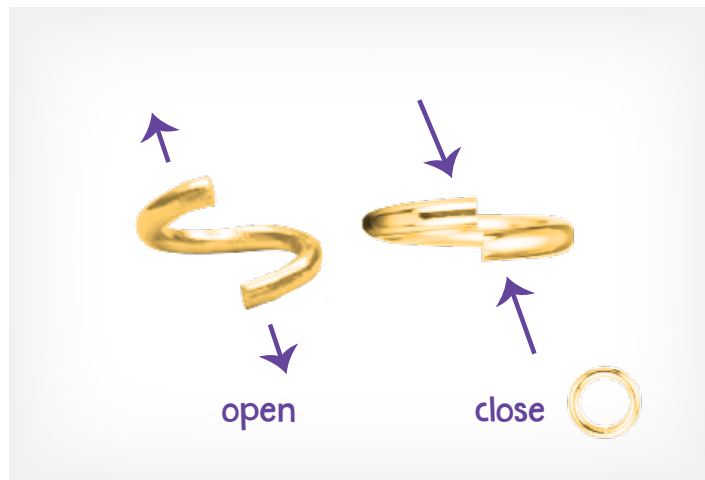




- 10** Flip the shape over and wipe off any remaining loose glitter. Use your sandpaper to lightly sand the area you want to apply the leaf finding. Glue the leaf finding to the top of the charm. Set it aside to dry and cure for at least 24 hours.



- 11** Use the jump rings to attach the star shaped hook and charm. Open the jump rings by twisting, not pulling as shown.

Finish



- 12** Use 2 jump rings to attach the fidget shaker to the star key chain and 2 jump rings to attach the charm. Open the jump rings by twisting, not pulling as shown and then close. Add a dot of glue where you close them.



- 13** Hook them on your backpack, lanyard or lunchbox. Give them a little shake to enjoy the satisfying sounds and colors.

Keep the extra materials for touch ups and repairs.

Resin Fidget Shakers #6336000
© Faber-Castell USA, Inc.
Cleveland, Ohio 44125
www.fabercastell.com
Designed in the USA
Made in China
Conforms to ASTM D-4236
Non-Toxic Safe for Children

NEED HELP?
Call Toll-Free: 800-311-8684
email: consumer@fabercastell.com
Chat or view **FAQS & INFO** online:
creativityforkids.com



For help & to view tutorials, head to
WWW.YOUTUBE.COM/JUSTADDIMAGINATION
CREATIVITYFORKIDS.COM

RESIN FIDGET SHAKERS



Age
8+

Looking for a fun fidget sensory toy? This complete set includes everything you need to cast and create colorful shaker keychain charms.

We've included enough materials to make 3 neon sparkling keychains with mesmerizing fillers and soothing sounds. Read through all instructions before starting the kit.



What is resin? This plastic-like material is created when 2 liquids are combined to form a solid. This unique mixture hardens to take on the shape of almost any mold.



WARNING:

This set contains chemicals that may be harmful if misused. Read cautions on individual containers carefully. Not to be used by children except under adult supervision.

Mix the Resin

Warnings: Cover your work area and wear old clothes. Clean up any spills immediately! If resin or glue are allowed to cure (dry) on a surface, they will be permanent. Adult supervision is recommended for younger crafters.

USE ONLY AS INSTRUCTED
Do not swallow or get in eyes.
Keep out of reach of small children.

FIRST AID TREATMENT
If swallowed, rinse mouth with water. Consult a physician. In case of eye contact, rinse well with water. If irritation develops, seek medical advice. In case of skin contact, wash with soap and water thoroughly. If irritation develops, seek medical advice.



- 1 Using the measuring cup measure out 0.7 fl oz. (20ml) of part A and 0.7 fl oz. (20ml) part B for a total of 1.4 fl oz (40ml).
- 2 Using the stir stick, mix slowly inside the measuring cup, to avoid air bubbles.
- 3 Mix for 3 minutes until the cloudy liquid becomes fully clear.

Adding the Glitter



Pro Tip: Use the box from this kit to cover your work surface.

- 4 Place mold sticker side down on top of a sturdy transferrable surface. Carefully pour the liquid into each of the molds so that resin is level with the outside edge. Do not overfill.
- 5 Select the glitter colors you want to use for each mold. Snip the corner of the glitter packet and sprinkle a generous amount on top of the resin. Do not stir! The glitter will settle into the resin.

Create your Shakers

- Pro Tips:
- Try mixing glitter colors for fun multi-color effects.
- Use a tooth pick to remove bubbles, clean up imperfections, or to move the glitter.

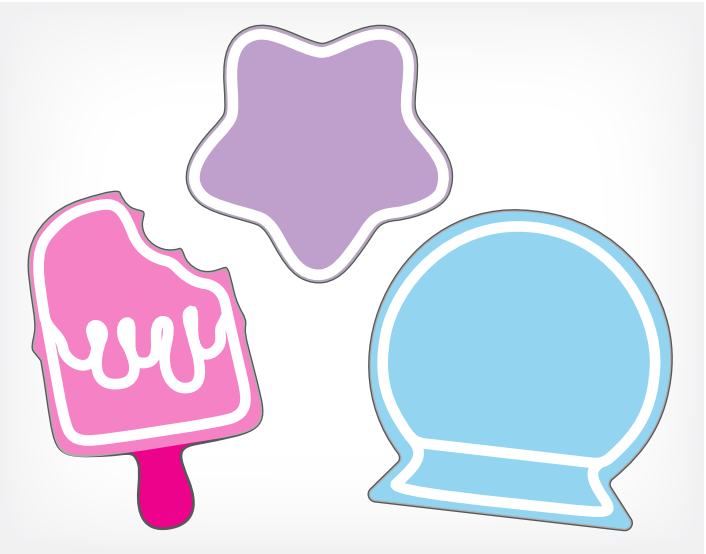
Allow molds to rest undisturbed on a level surface for approximately 24 hours to cure. Curing times may vary depending on the heat / humidity of your room.



Pro Tip: For best results, fill with different sizes and shapes of fillers. The pearl beads shake best in the snow globe.



- 6 Once the resin has hardened, peel the silicone mold away to release the resin. Use the sand paper to smooth any rough edges.
- 7 Select your favorite fillers. Fill your shakers as shown taking care not to overfill.



- 8 Add a line of glue on the resin as shown. Allow glue to set for 30 seconds.
- 9 Carefully line up the clear cover and place it over the resin shape. Press lightly to ensure a secure seal and is flat against the resin shape. Let dry for 5 minutes.