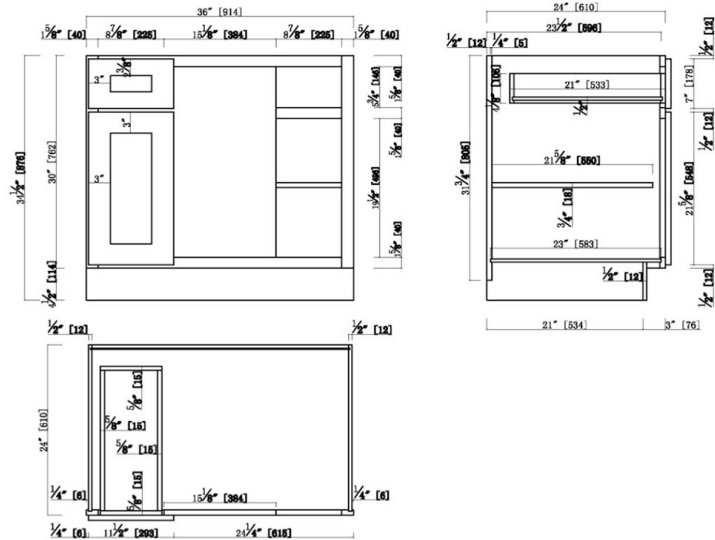


Brookings Fully Assembled Shaker Blind Base Kitchen Cabinet 36x34.5x24

Espresso



SPECIFICATIONS

MATERIAL CONSTRUCTION:	Wood	NUMBER OF SHELVES:	1
WOOD SPECIES:	Maple	SHELF STYLE:	Flat
ASSEMBLED DIMENSIONS:	34.5" H x 36" L x 24" D	ADJUSTABLE SHELVES:	Yes
ASSEMBLED WEIGHT:	86 lbs.	SHELF ADJUSTIBILITY INCREMENTS:	2.5"
KITCHEN CABINET TYPE:	Base	SHELF DIMENSIONS:	34.5" W x 10.25" D
MOUNTING TYPE:	Floor Mount	SHELF THICKNESS:	0.75"
CONSTRUCTION TYPE:	Face Frame	SHELF MATERIAL:	Plywood
HINGE STYLE:	Soft Close	FACE FRAME MATERIAL:	Solid Maple
DOOR STYLE:	1 Wood shaker door, reversible	SIDES MATERIAL:	Plywood
NUMBER OF DRAWERS:	1	BOTTOM MATERIAL:	Plywood
DRAWER DIMENSIONS 1:	4.17" H x 21" L x 8.3" D	BACK PANEL MATERIAL:	Plywood
DRAWER DIMENSIONS 2:	N/A	BACK BRACE MATERIAL:	Wood
DRAWER DIMENSIONS 3:	N/A	TOE KICK INSET WIDTH:	3
DWR BOX MATERIAL:	Solid Wood		
DWR CONSTRUCTION:	Dove Tail		
DWR GLIDE:	STD Easy Glide		
FAKE DWR QTY:	0		
FAKE DWR LOCATION:	N/A		

WARRANTY:	1-Year limited warranty
LEGAL FOR SALE IN CALIFORNIA:	Yes
CARB COMPLIANT:	CARB Phase 2
TSCA TITLE VI COMPLIANT:	Yes



TYPE:
JOB:
ORDER CODE:
APPROVALS: