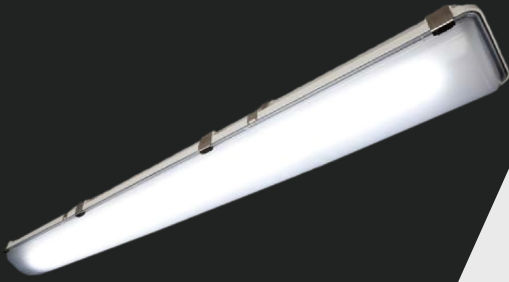


Albeo® LED Luminaires

ALR2 series | Linear Industrial Lighting



CUSTOMER NAME _____
 Project Name _____
 Date _____ Type _____
 Catalog Number _____

The **Albeo® ALR2** series LED luminaire is an efficient alternative to traditional fluorescent in a variety of commercial and industrial lighting applications. The ALR2 expands the linear product offering to include IP65, IP66 and IP67 rated fixtures for demanding industrial environments. The new ALR2 features 316 L grade stainless steel latches. ALR2 LED fixture can be matched with motion, daylight and wireless controls for increased energy savings. Designed to meet recommended luminance and illuminance requirements for low bay and task level lighting as well as parking garage, stairwell & general lighting applications.

CONSTRUCTION

Housing:	Fiberglass & steel
Lens:	Acrylic diffused (No glass in housing or lenses)
Paint:	Powder coat painted
Weight:	Up to 19lb (8.62kg)

OPTICAL SYSTEM

Lumens:	2000–20000
Distribution:	120° diffused lens & 160° clear lens
Wattage:	100–240W
Efficacy:	Up to 160 LPW
CCT:	3000K, 3500K, 4000K, 5000K
CRI:	80 & 90

ELECTRICAL

Input Voltage:	120–277V, 347V or 480V
Input Frequency:	50/60Hz
Power Factor (PF)*:	>90% *
Total Harmonic Distortion (THD)*:	<20%*
EMI:	FCC CFR Title 47 Part 15, Class A
Surge Protection:	3kV driver surge protection
LED Driver Type:	Class 2
Output Frequency/ Flicker Rate:	NEMA 77

* PF and THD may vary with options

CONTROLS

High-end trim, occupancy and ambient light detection with dimming available. Wireless Daintree® options available

LUMEN MAINTENANCE

LXX (10K) @ HOURS 100,000 HR
L70

LUMEN AMBIENT TEMPERATURE

TYPE	TEMPERATURE RATE
OPERATING TEMPERATURE	-30°C to +45°C (-22°F to 122°F)
STORAGE TEMPERATURE	-40°C to +70°C

MOUNTING

- **Typical Mounting:** Chain/Cable or Surface mount ready.
- **Optional Mounting:**
 - Rod Mounting
 - 45° Degree Wall Mount
 - Cable Mount Kit
- **Cord & Plugs:** Standard = knockout access (no cord, no plug) 6ft. 18–3 - Cord A, 12ft. 18–3 - Cord B

DESIGN LIFE & WARRANTY

- **Location:** UL 1598 Suitable for Wet Locations
- **Safety:** UL/cUL Listed
- **Ratings:** IP65, IP66, IP67, NEMA 4X NSF Splash Zone & Non Food rated fixture optional
- **IK Rating:** IK06
- EMBB option provides 90min of 2000lm at 5000K
- **Current's Limited 5-year Warranty:** Please refer to **ALB048** in Product Downloads section at: <https://products.gecurrent.com>



Albeo® LED Luminaires

ALR2 series | Linear Industrial Lighting

Ordering Information

CUSTOMER NAME

Project Name _____

Date _____ Type _____

Catalog Number _____

Ordering Information:

ALR2

T

Q W

PRODUCT ID	VOLTAGE ¹	FIXTURE LENGTH & BODY	LUMEN OUTPUT	PERFORMANCE LEVEL	CCT/CRI	OPTICS	FIXTURE TYPE	SENSOR/WIRELESS	CONTROL WIRING	EMERGENCY	MOUNTING	CORD	PLUG	FINISH	OPTIONS
ALR2 = ALR IP67 Linear Series 2 nd Gen	0 = 120/277V 1 = 120 4 = 277 5 = 480 D = 347	2T = 2ft. Standard Body	02 = 2,000lm	T = Standard Efficiency	80 Plus CRI 8 = 3000k C8 = 3500k 48 = 4000K 58 = 5000K 90 Plus CRI 39 = 3000k C9 = 3500k 49 = 4000K 59 = 5000K	1D = 120° Diffused lens WC = Wide Clear 160° Parking Garage Optic	S = Standalone F = NSF Food Rated	Q = None A = Occ Sense On/Off 360° SBOR B = Occ Sense High-Low Dimming 360° SBOR P = Daylight Sense w/ Occupancy On/Off SBOR S = Daylight Sense w/ Occupancy High-Low Dimming SBOR W = Bi-level dimming/ Stairwell setting sensor Full Featured²: 1 = 20' Motion Sensor FSP221 w/daylight & High-Low Dimming 2 = 40' Motion Sensor FSP221 w/daylight & High-Low Dimming Daintree® EZ Connect¹: DF = Occupancy & Ambient Light Sensor w/ Continuous Dimming Daintree® One: FB = Occupancy & Ambient Light Sensor w/ Continuous Dimming Daintree® Networked: NA = Occupancy & Ambient Light Sensor w/ Continuous Dimming (full feature) TQ ³ = Wireless Daintree® Enabled (no sensor)	Q = None/ No External Control Wiring V ⁴ = 0-10V Control Wires	Q = None E ⁵ = Battery Backup	ST = Standard 21 = ¾" Threaded Rod Bracket 45 = 45° Wall Mount 51 = Cable/ Toggle 5ft. 52 = Cable/ Toggle 10ft. 53 = Cable/ Toggle 15ft.	K = Knockout A = 6ft. 18ga cord B = 12ft. 18ga cord	Q = None W = White	Blank = No Special Options 1PK = Single Pack <small>(For distributor stocking. Default is Job (4) Pack not 1 PK)</small>	
			03 = 3,000lm												
			04 = 4,000lm												
		4N = 4ft. arrow Body	03 = 3,000lm												
			04 = 4,000lm												
			05 = 5,000lm												
		4T = 4ft. Standard Body	03 = 3,000lm												
			04 = 4,000lm												
			05 = 5,000lm												
		8T = 8ft. Standard Body	06 = 6,000lm												
			08 = 8,000lm												
			10 = 10,000lm												
12 = 12,000lm															
16 = 16,000lm															
20 = 20,000lm															

80 CRI @ 5000K CCT						
FIXTURE LENGTH	OUTPUT LEVEL	TYPICAL DELIVERED LUMENS	TYPICAL POWER		TYPICAL LPW 120-277V	MAX AMBIENT TEMP (°C)
			120-277V	347-480V		
2 ft.	2,000	1,900	14	16	136	45°C
	3,000	2,900	21	23	138	
	4,000	3,700	28	30	132	
4 ft.	3,000	3,100	20	22	155	45°C
	4,000	4,100	27	29	152	
	5,000	5,100	34	36	150	
	6,000	6,100	42	44	145	
	8,000	8,100	59	65	137	
	10,000	10,000	79	88	127	
8ft.	4,000	4,100	25	28	164	45°C
	6,000	6,100	38	40	161	
	8,000	8,100	52	57	154	
	10,000	10,100	67	73	151	
	12,000	12,100	82	91	148	
	16,000	16,100	118	129	136	
20,000	20,000	158	174	127	40°C	

CRI	CCT	OUTPUT
80CRI	5000K	100%
	4000K	98%
	3500K	97%
90CRI	3000K	93%
	5000K	89%
	4000K	85%
	3500K	83%
	3000K	81%

OPTIC CODE	OPTIC DESCRIPTION	OUTPUT
1D	120° Diffused Lens	100%
WC	Wide3 Clear 160° Parking Garage Optic	94%

ORDERING NOTES:

- Specify single voltage if plug, sensor, or wireless needed.
- Requires remote to modify default settings sold separately.
- Sensors are not available in 480V and NSF food rated fixtures. For special requests, contact manufacturer.
- V Option not available with dimming and ZigBee sensors.
- Battery Backup not available with 2T, 4N, AND 347/480V options.

Albeo® LED Luminaires

ALR2 series | Linear Industrial Lighting

Mounting/Accessory Options

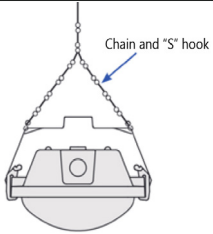
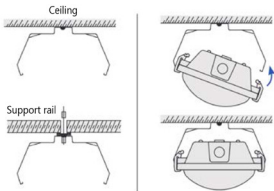
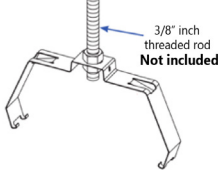
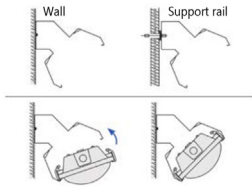
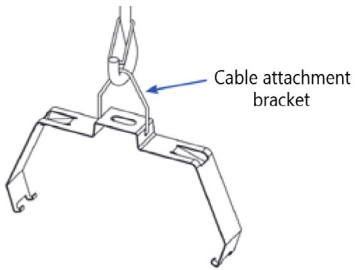
CUSTOMER NAME _____

Project Name _____

Date _____ Type _____

Catalog Number _____

MOUNTING AND ACCESSORY OPTIONS

MOUNTING/ACCESSORY OPTIONS	IMAGE	ORDER LOGIC CODE	DIMENSIONS/NOTES
<p>Standard Chain/Cable Mount Available on all fixture configurations. (Chain not included.)</p>	 <p>Chain and "S" hook</p>	ST = Standard	<p>STANDARD SKU: 93118276 NARROW SKU: 93118277 Description: Standard Cable, Chain & Surface Mounting Kit (Includes brackets only.)</p>
<p>Surface Mount (optional) Available with all fixture configurations. Standard mounting option is surface mount ready.</p>	 <p>Ceiling Support rail</p>	ST = Standard	
<p>Rod Mount Kit (optional) Available with all fixture configurations. Attaches to 3/8" threaded rod. Pendant mount included. (Rod and nuts not included.)</p>	 <p>3/8" inch threaded rod Not included</p>	21 = 3/8" Threaded Rod Bracket	<p>STANDARD SKU: 93118092 NARROW SKU: 93118146 Description: SRod Mounting Kit (Includes brackets only.)</p>
<p>45° Degree Wall Mount (optional) Available on 2T, 4T & 8T configurations. (Hardware not included.)</p>	 <p>Wall Support rail</p>	45 = 45° Wall Mount	<p>STANDARD SKU: 93118091 Description: 45 Degree Mounting Kit (Includes Brackets only.)</p>
<p>Cable Mount Kit (optional) Available with all fixture configurations. Cables and attachments included with kit.</p>	 <p>Cable attachment bracket</p>	<p>51 = Cable/Toggle 5 ft. 52 = Cable/Toggle 10 ft. 53 = Cable/Toggle 15 ft.</p>	<p>STANDARD SKUS: 51 Cable/Toggle: 93118093 52 Cable/Toggle: 93118094 53 Cable/Toggle: 93118095</p> <p>NARROW SKUS: 51 Cable/Toggle: 93118147 52 Cable/Toggle: 93118148 53 Cable/Toggle: 93118149</p> <p>Description: Cable Mounting Kit (Includes brackets, cables and attachment piece)</p>

See "Installation Instructions" for mounting details.

Albeo® LED Luminaires

ALR2 series | Linear Industrial Lighting

Product Dimensions

CUSTOMER NAME

Project Name _____

Date _____ Type _____

Catalog Number _____

PRODUCT DIMENSIONS

