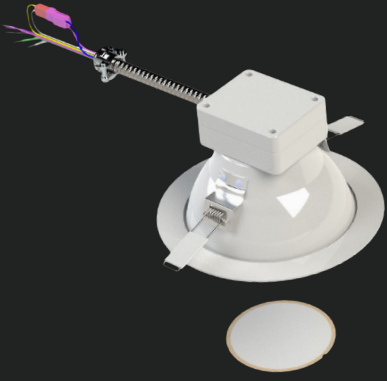


CUSTOMER NAME \_\_\_\_\_  
 Project Name \_\_\_\_\_  
 Date \_\_\_\_\_ Type \_\_\_\_\_  
 Catalog Number \_\_\_\_\_



The **Wall Wash Kit** is a quick and simple to use field installable lens kit to enable wall wash lighting designed to work on any 4", 6" and 8" LRX Series Downlight Luminaire. Each lens is indicated with a clear notch indicating orientation and with an easy-to-use peel off lining taking only seconds to apply while providing ultimate flexibility in lighting design even after product installation.

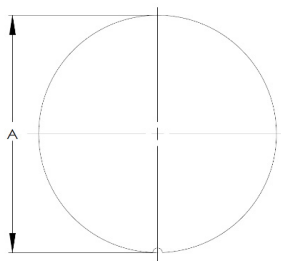
## MOUNTING

- Take the wall wash kit from the package and remove the paper lining from film to expose adhesive [Fig. 1]
- Apply the film to the lens with the adhesive facing the luminaire [Fig 2.]  
**Note: Ensure film is free of any residue or fingerprints before applying to luminaire.**
- The notch should be faced away from the wall target [Fig. 3.]

## ORDERING INFORMATION

SKU#	SKU DESCRIPTION	MATERIAL DESCRIPTION	COMPATIBLE WITH PRODUCT
93160213	LRXR4-WW -5PAK	LRX 4" Round Wall Wash Kit, 5pc kit	LRX(B)R4
93160214	LRXR6-WW -5PAK	LRX 6" Round Wall Wash Kit, 5pc kit	LRX(B)R6
93300987	LRXR8-WW -5PAK	LRX 8" Round Wall Wash Kit, 5pc kit	LRX(B)R8

## DIMENSIONS



- 4" Round:**  
 A = 3.20" [81.3 mm];
- 6" Round:**  
 A = 3.85" [97.8mm];
- 8" Round:**  
 A = 4.64" [118mm];

## PHOTOMETRIC COMPARISON

