

Cuisinart Outdoors™

Prep 'n Go Folding Gas Grill MODEL NO: CGG-288

WARNING

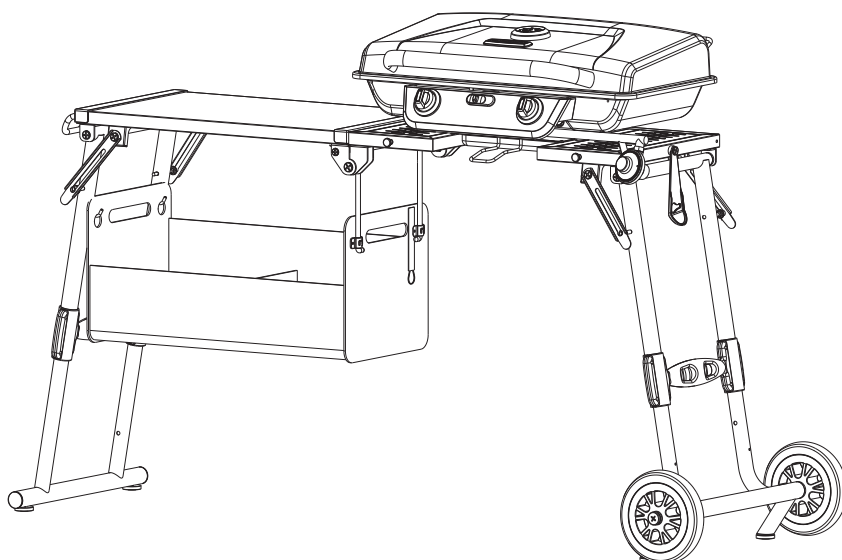
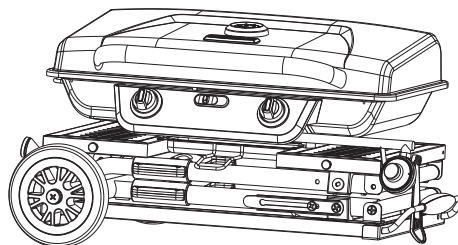
- For Outdoor Use Only (outside any enclosure).
- This instruction manual contains important information necessary for proper assembly and safe use of this appliance.
- Read and follow all warnings and instructions before assembling and using the appliance.
- Follow all warnings and instructions when using the appliance.
- Keep this manual for future reference.

DANGER

- If you smell gas:
 1. Shut off gas supply to the appliance.
 2. Extinguish any open flames.
 3. Open the lid.
 4. If the odor continues, keep away from the appliance and immediately call your fire department.

Failure to follow these instructions could result in fire or explosion which could cause property damage, personal injury, or death.

- Never operate this appliance unattended.
- Do not store or use gasoline or other flammable liquids or vapors in the vicinity of this or any other appliance.
- An LP cylinder not connected for use shall not be stored in the vicinity of this or any other appliance.
- Check for leaks every time prior to lighting the Grill, even if purchased fully assembled. Gas leaks may cause a fire or explosion. Please read the instructions on page 20.



Customer Service Hotline

1-866-994-6390



CSA/ANSI Z21.89:(23) • CSA 1.18:(23)

DO NOT RETURN PRODUCT TO THE STORE

Before visiting your local retailer, please email outdoors@cuisinart.com or call our customer service department at 1-866-994-6390 to chat with a representative. To best serve you, our representatives are available to answer calls Monday to Friday 9 AM to 5 PM EST.

Table of Contents

Table of Contents	2
Safety Information	3
What's In The Box	5
Assembly Instructions	6
Setup Instructions	8
Operating Instructions	20
Care and Maintenance	22
Trouble Shooting	23
Match Light Instructions	23
Exploded View	24
Parts List	25
Warranty	26

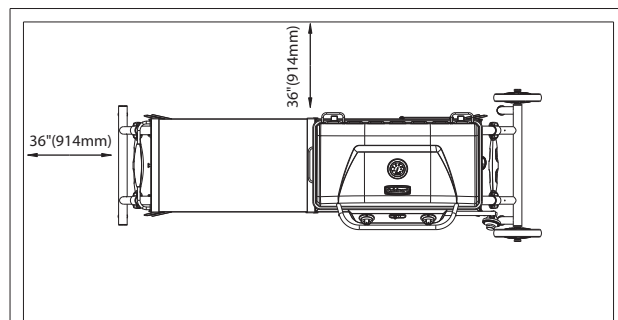
SAFETY INFORMATION

SAVE THESE INSTRUCTIONS FOR OUTDOOR HOUSEHOLD USE ONLY

Please read the following instructions carefully before attempting to assemble, operate or install the product. Failure to follow these instructions may result in serious bodily injury and/or property damage. If you have questions regarding the product please call customer service at 866-994-6390, 9 a.m.-5 p.m., EST, Monday-Friday or email outdoors@cuisinart.com.

LP- gas supply cylinder to be used must be constructed and marked in accordance with the specifications for LP-gas cylinders of the U.S Department of Transportation (DOT) or the National Standard of Canada, CAN-B339, Cylinders, Spheres and Tubes for the Transportation of Dangerous Goods.

1. The installation must conform with local codes or, in the absence of local codes, with the National Fuel Gas Codes, with the National Fuel Gas Code, ANSI Z223.1/NFPA 54, Storage and Handling of Liquefied Petroleum Gases, ANSI/NFPA 58.
2. Grill is for outdoor use only. Grill should be operated in a well-ventilated space. Never operate in an enclosed space, garage or building. Your grill is not intended to be installed in or on recreational vehicles and/or boats.
3. Do not move the appliance when in use. Allow the appliance to cool to below 115F(45C) before moving or storing.
4. Do not install or use grill within 36" of combustible materials from back and sides of grill. Grill shall not be located under overhead surfaces (closed carport, garage, porch, patio) that can catch fire.
5. Never attempt to attach this grill to the self-contained LP gas system of a camper trailer or motor home.
6. It is the responsibility of the assembler/owner to assemble, install and maintain gas grill. Do not let children and pets operate or play near your grill. Failure to follow these instructions could result in serious personal injury and/or property damage.
7. Carefully follow instructions in this manual for proper assembly and leak testing of your grill. Do not use grill until leak checked. If leak is detected at any time, it must be stopped and corrected before using grill further.
8. Appliance area should be kept clear and free from combustible materials, gasoline, bottled gas in any form and other flammable vapors and liquids. Do not obstruct flow of combustion and ventilation air.
9. Never try to light grill with lid closed! Buildup of gases is very dangerous and could cause an explosion.
10. Keep any electrical cord or fuel supply hose away from any heated surfaces.
11. Propane is a flammable gas and improper handling may result in explosion and/or fire and serious accident or injury.
12. This appliance will be hot during and after use. Use insulated oven mitts or gloves for protection from hot surfaces or splatter from cooking liquids.
13. Do not leave your grill unattended while in operation.
14. Do not use while under the influence of drugs or alcohol.
15. Do not store any spare LP (propane) cylinder, full or empty, under or near your grill.
16. Appliance is not intended for commercial use or rental.
17. The cylinder must be disconnected when the appliance is not in use.
18. This appliance is not intended for and should never be used as a heater.
19. The specific size and capacity of the cylinder to be used is 16.4 oz.
20. The LP gas supply cylinder to be used shall be constructed and marked in accordance with the specifications for LP gas cylinders, U.S. DOT, or CSA B339.



NATURAL HAZARD • SPIDERS

FACT: Sometimes spiders and other small insects climb into the burner tube. The spiders spin webs, build nests and lay eggs. The webs or nests can be very small, but they are very strong and can block the flow of gas. Clean burner prior to use after storing, at the beginning of griddling season or after a period of one month not being used.



SAFETY INFORMATION

The Fuel System

Gas grills are used safely by millions of people when following simple safety precautions.

The items in the fuel system are designed for operation with this grill. They must not be replaced with any other brand. (See parts list for replacement items.)

GAS BURNER: The gas burner is constructed of stainless steel and should not require maintenance other than inspection for insects/nests inside the air intake slots.

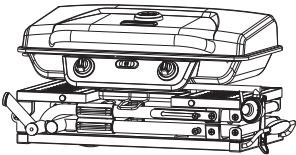

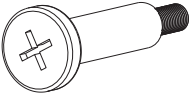
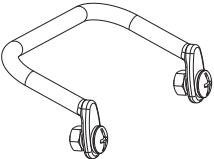
PROPANE FUEL: Warning - propane is a flammable gas. Improper handling may result in an explosion and/or fire and serious accident or injury. Your grill is designed to operate with propane gas only and is equipped with the proper orifice for Propane gas.

Caution: Do not connect this grill with any gas supply other than propane. propane gas is heavier than air and settles in lower areas. Make certain adequate ventilation is available when using your grill. The propane gas cylinder may be stored outside in a well-ventilated area out of the reach of children when the grill is not in use. If the appliance is not in use, the gas must be turned off at the supply cylinder.

The propane gas cylinder shall be used only outdoors in a well-ventilated space and not in a building, garage, or any other enclosed area. Grill may be stored indoor if the propane gas cylinder is removed and stored outdoor. The LP gas cylinder (not included) is threaded for connection directly to the gas regulator supplied with this appliance. Care should be taken when threading the cylinder to the regulator to engage threads correctly to achieve the proper and intended connection. When disconnecting or connecting the propane gas cylinder, be careful that the regulator does not strike the grill, the ground, or any other surfaces. Replace the protective cap over the threaded cylinder connection when removed from grill. If any difficulty occurs when connecting or disconnecting the cylinder to the regulator assembly, contact your local gas supplier for assistance.

When re-connecting the propane gas cylinder to the regulator, be sure to hand-tighten until snug. This connection should be inspected for damage and leak tested after each re-connection.

WHAT'S IN THE BOX

PART	DESCRIPTION	QTY
1	 <p>Prep 'n Go Grill Assembly with Storage Tote</p>	1pc
2	 <p>Wheel</p>	2pc
3	 <p>Wheel Axel</p>	2pc
4	 <p>Roll Bar</p>	2pc

ASSEMBLY INSTRUCTIONS

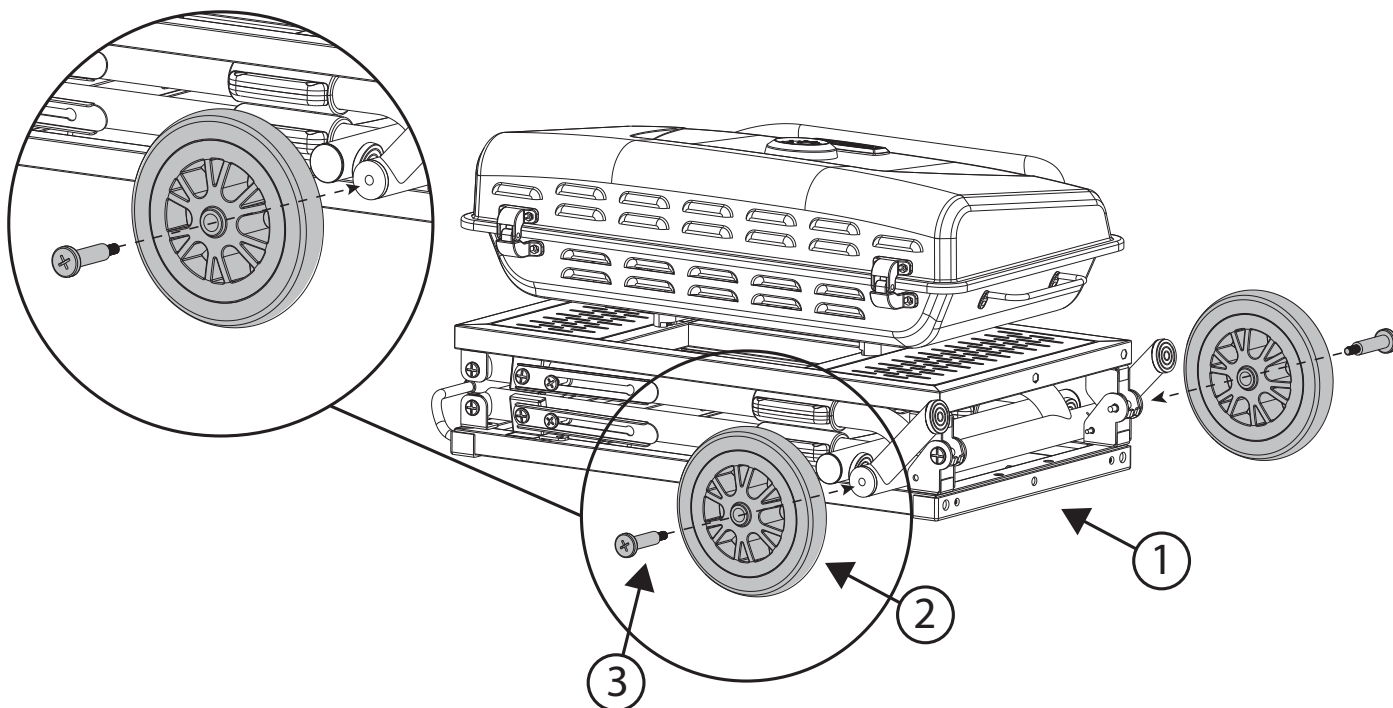
Before beginning assembly, installation or operation of product, make sure all parts are present. Compare parts with package contents list. If any part is missing or damaged, do not attempt to assemble, install or operate the product. Contact customer service for replacement parts.

Estimated assembly time:
10 minutes

Tools you will need:
• **Phillips Head Screwdriver**

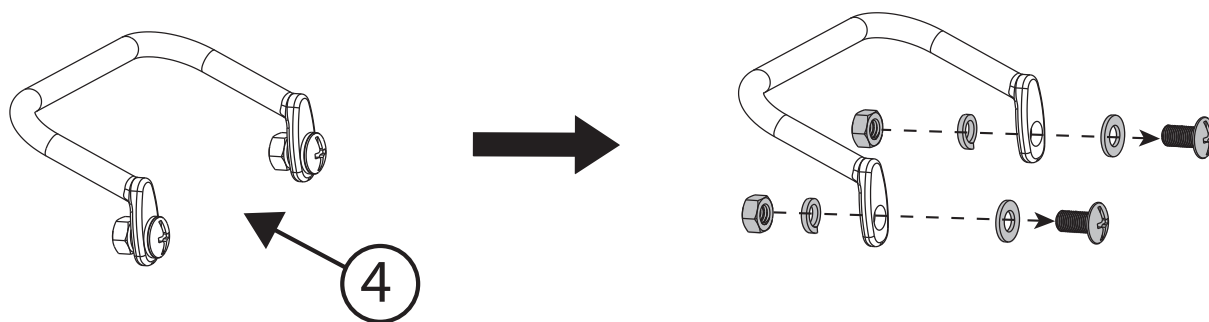
STEP 1

- Attach the two Wheels (2) to the Prep 'n Go Grill (1) using two Wheel Axles (3).



STEP 2

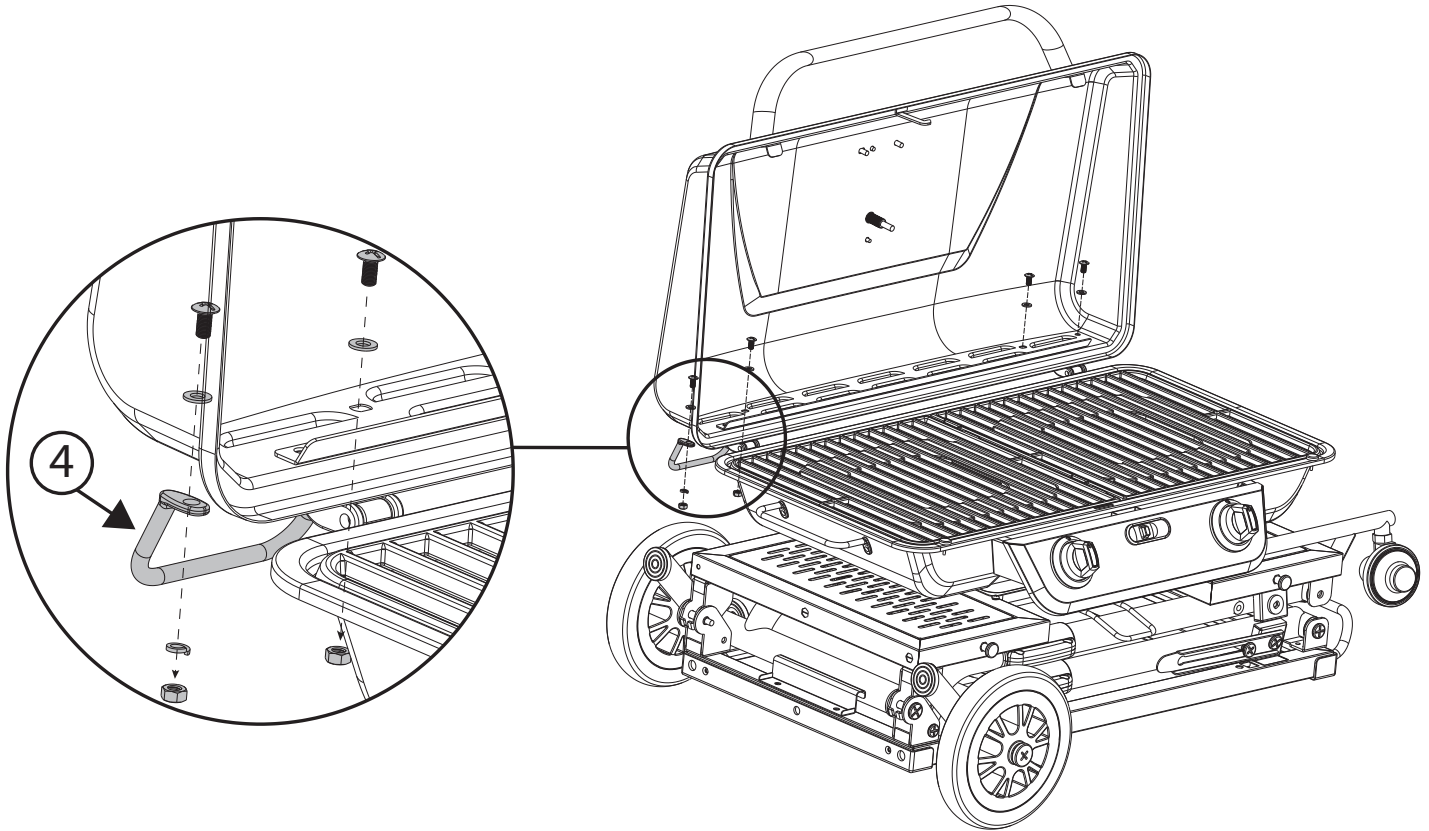
- Taking note of the order, disassemble the screws and washers from the Roll Bars (4).



ASSEMBLY INSTRUCTIONS

STEP 3

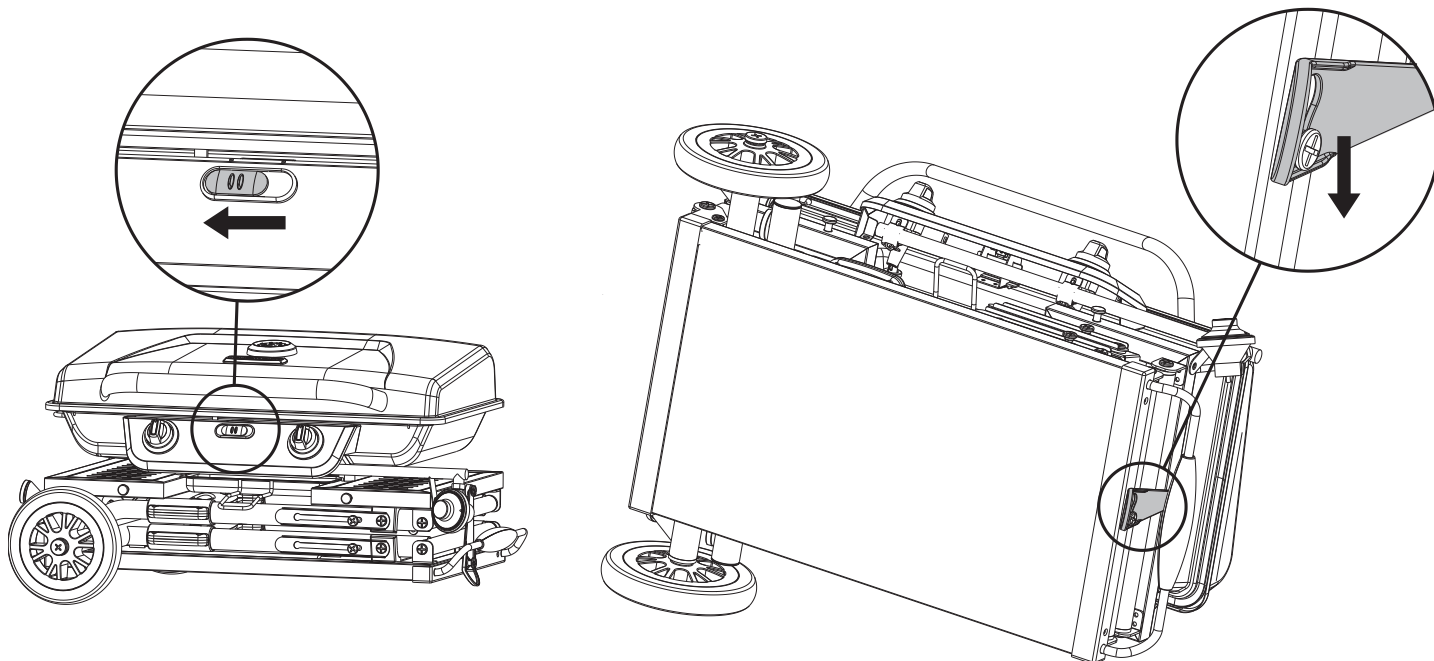
- Unlock the grill lid and assemble the two Roll Bars (4) to the back of the lid, maintaining the washer order from Step 2.
- The Roll Bars should angle upwards, ensuring they are higher up on the lid.



SETUP INSTRUCTIONS: UNFOLDING

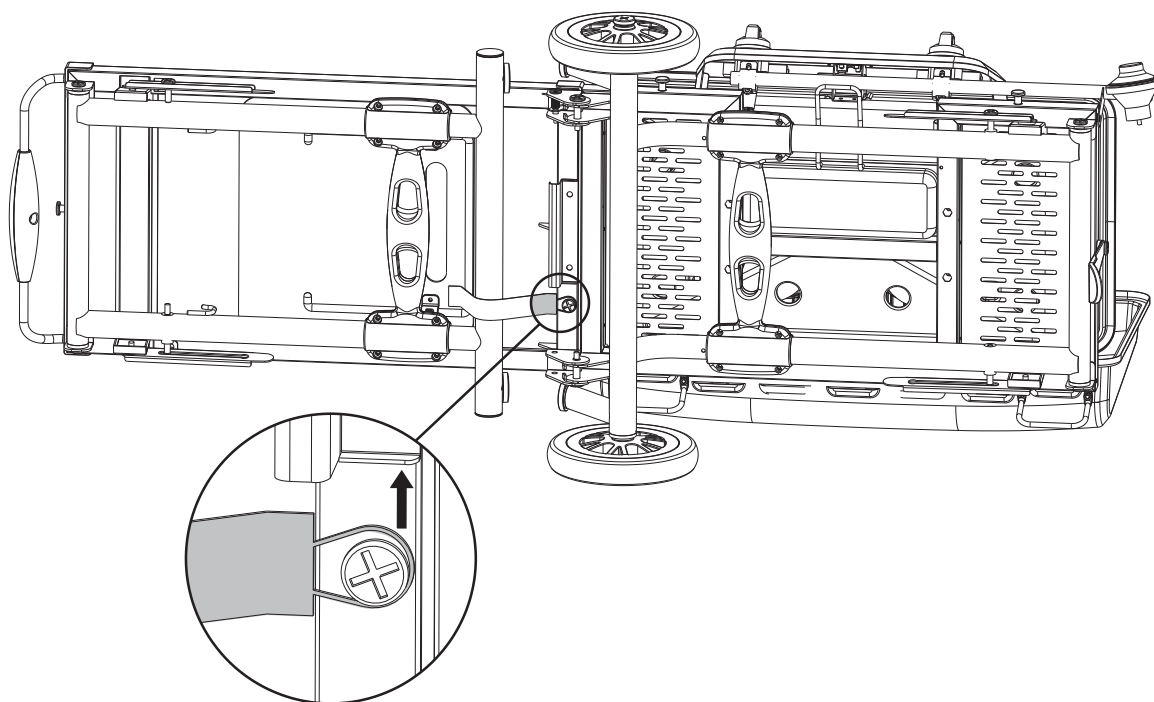
STEP 1

- Ensure the lid is locked by pushing the lid lock to the left.
- Lift the front side of the grill so that it is standing on the rear wheel and the roll bars behind the lid.
- Press the red latch down on the right side to unlock the unit and rotate the latch out of the way.



STEP 2

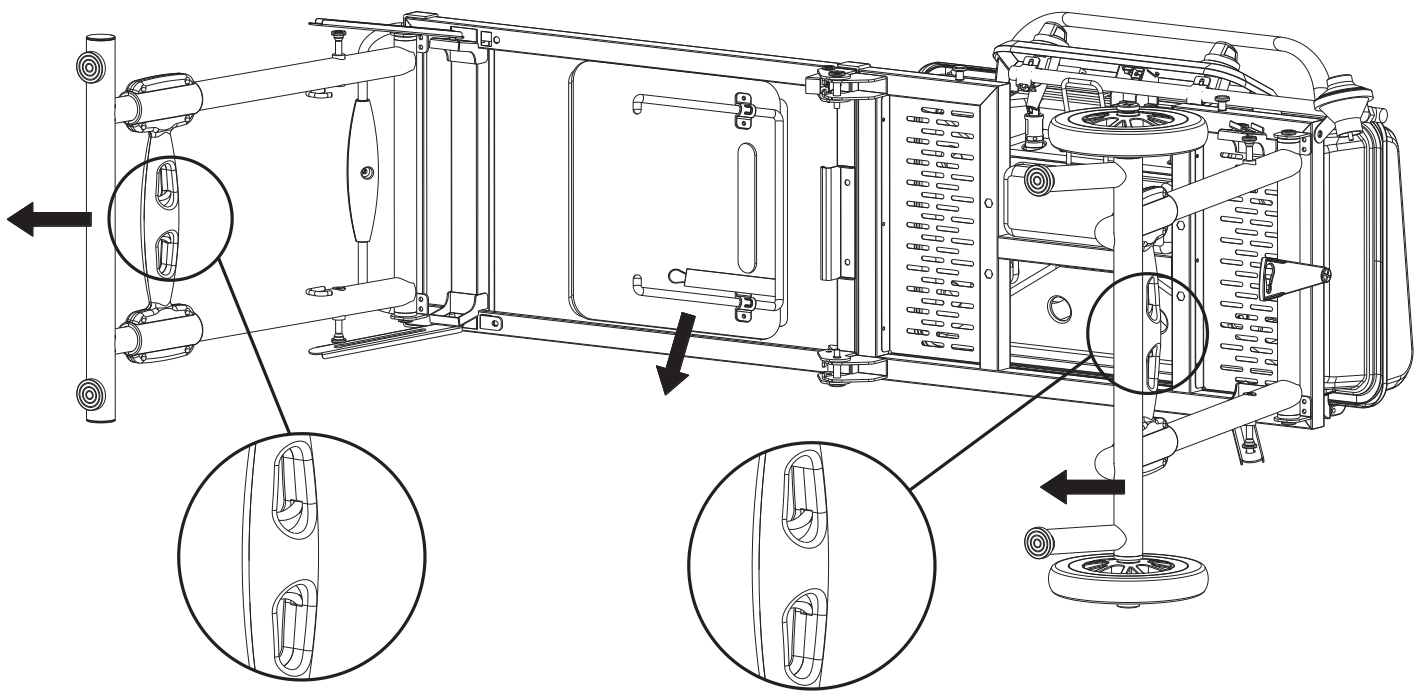
- Swing the table out from under the grill until it locks in place.
- Unhook the strap holding the left legs in place.



SETUP INSTRUCTIONS: UNFOLDING

STEP 3

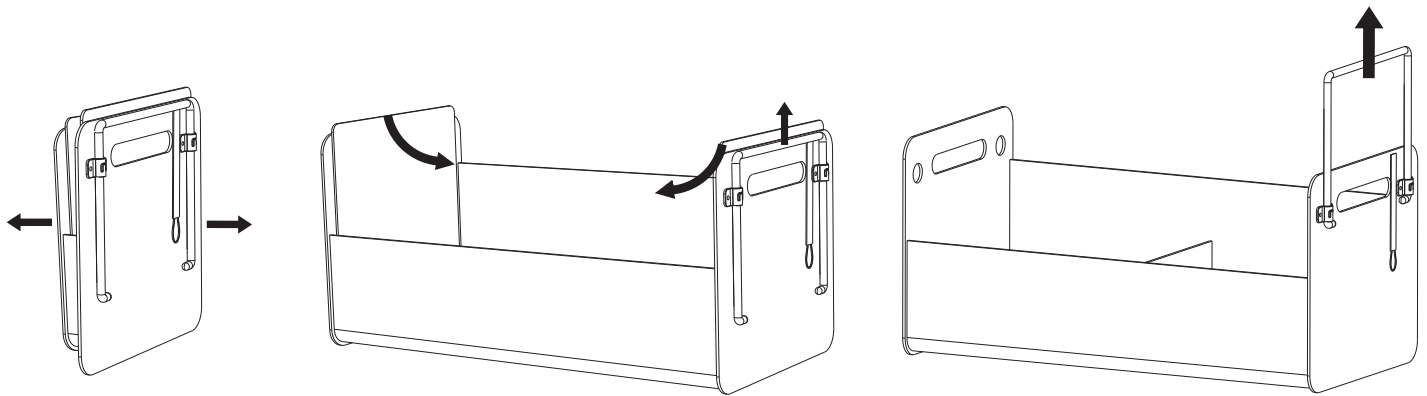
- First, swing the legs with wheels out from under the grill until they lock in place. The legs will open past 90 degrees; this is normal and helps with stability.
- Next, swing the legs out from under the table until they lock in place
- The storage tote will now be accessible, set it aside for now.
- Extend both legs by holding the lock triggers together and pulling the legs out on each side until they lock in place.



SETUP INSTRUCTIONS: UNFOLDING

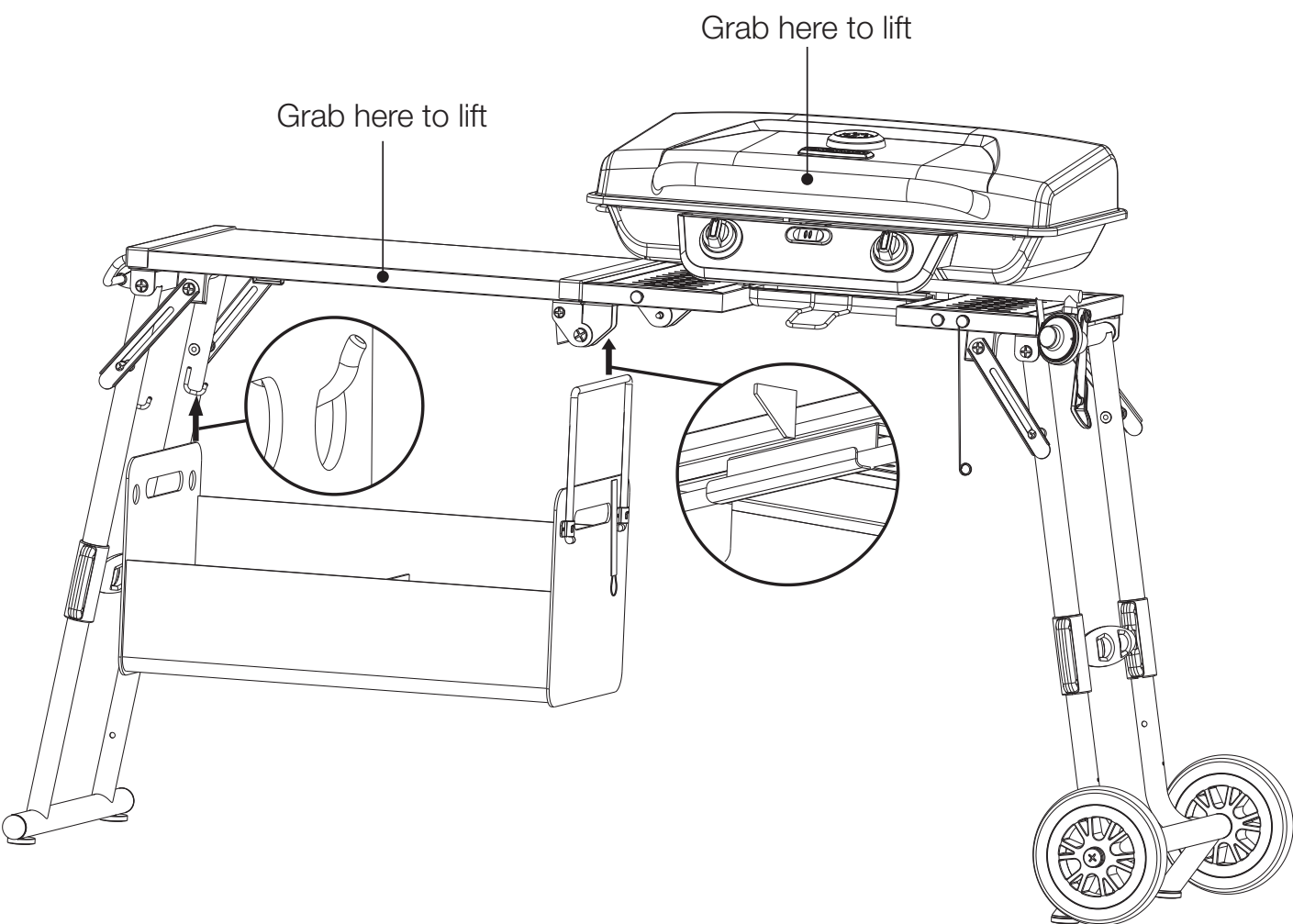
STEP 4

- Take the storage tote and pull it open by the two handles.
- Place the two hard panels flat at the bottom of the tote to provide sturdy support.
- Pull the plastic hanging frame up from the right side until it clicks in place.



SETUP INSTRUCTIONS: UNFOLDING

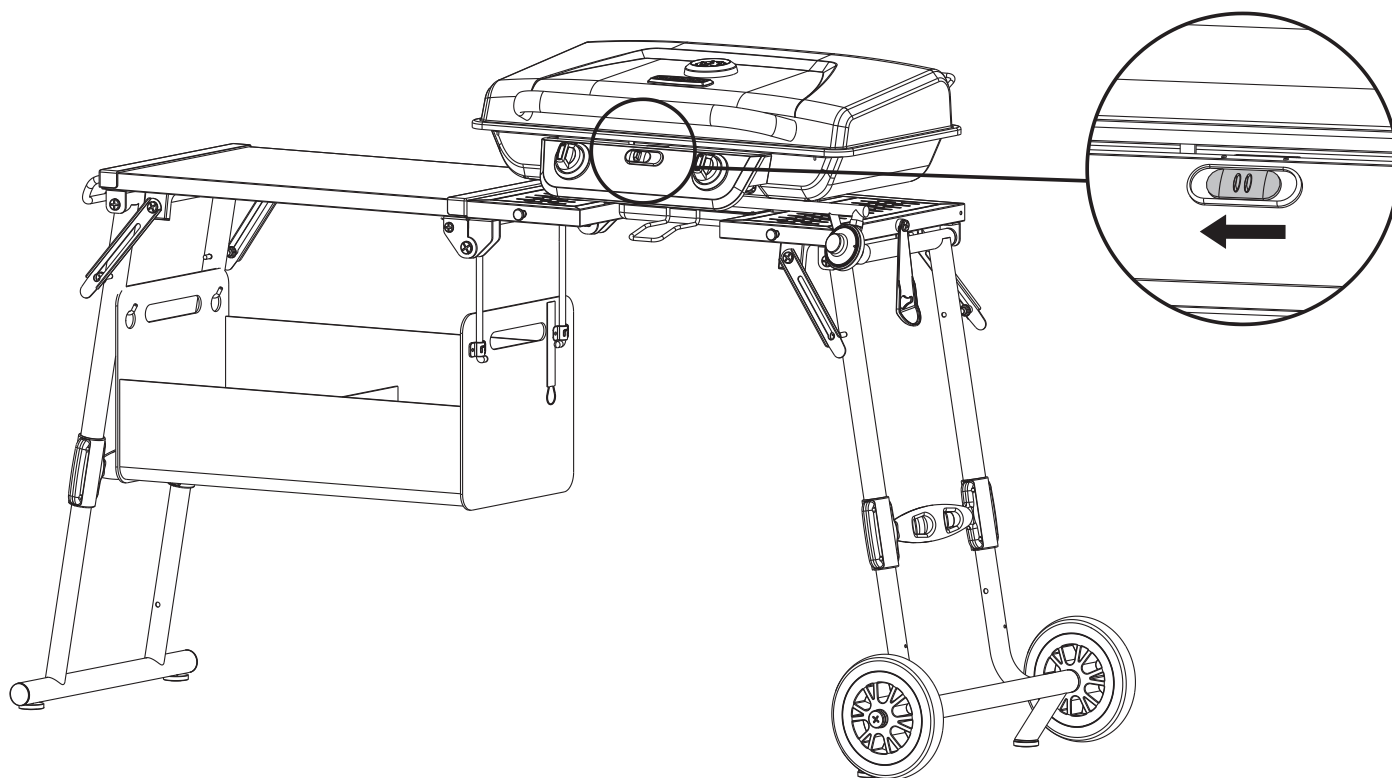
- Lift the grill onto its legs by grabbing the grill lid handle and underneath the front edge of the table. Gently pull the legs apart to ensure the grill is stable.
- Hook the fabric tote under the table. There are two wire hooks on the left legs that hook into the steel rings on the left side of the tote. See Detail [I]. On the right side of the table there is a long steel hook for the plastic hanging frame. See Detail [II].



SETUP INSTRUCTIONS: FOLDING

STEP 1

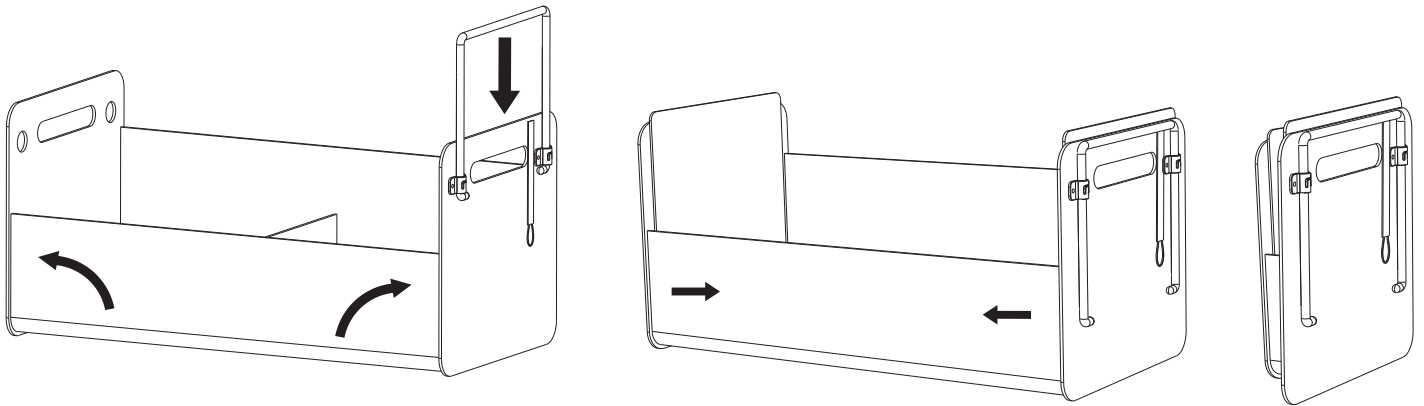
- Ensure the grill has cooled completely, the grill grates are in place and the lid is fully closed and locked.
- Remove the propane tank and empty the grease cup.



SETUP INSTRUCTIONS: FOLDING

STEP 2

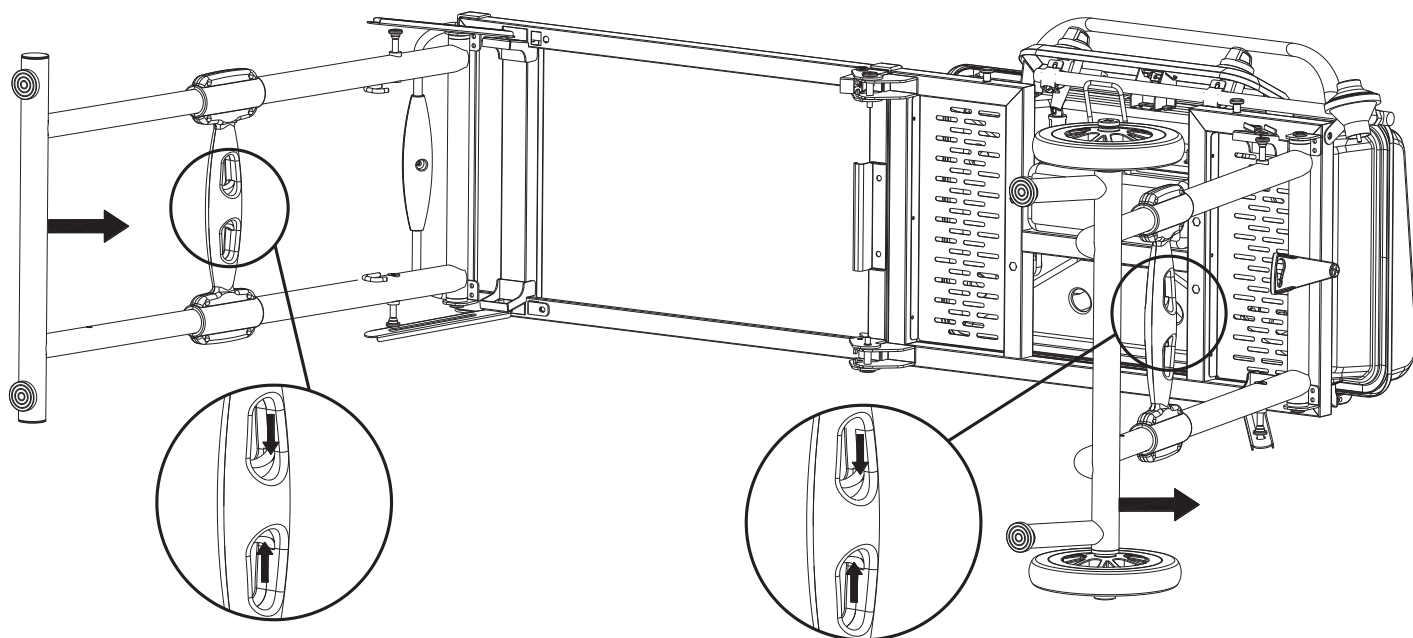
- Remove the storage tote and push the plastic hanging frame down.
- Pull up the two hard panels.
- Press the two sides of the tote together ensuring all the panels and fabric folds neatly.



SETUP INSTRUCTIONS: FOLDING

STEP 3

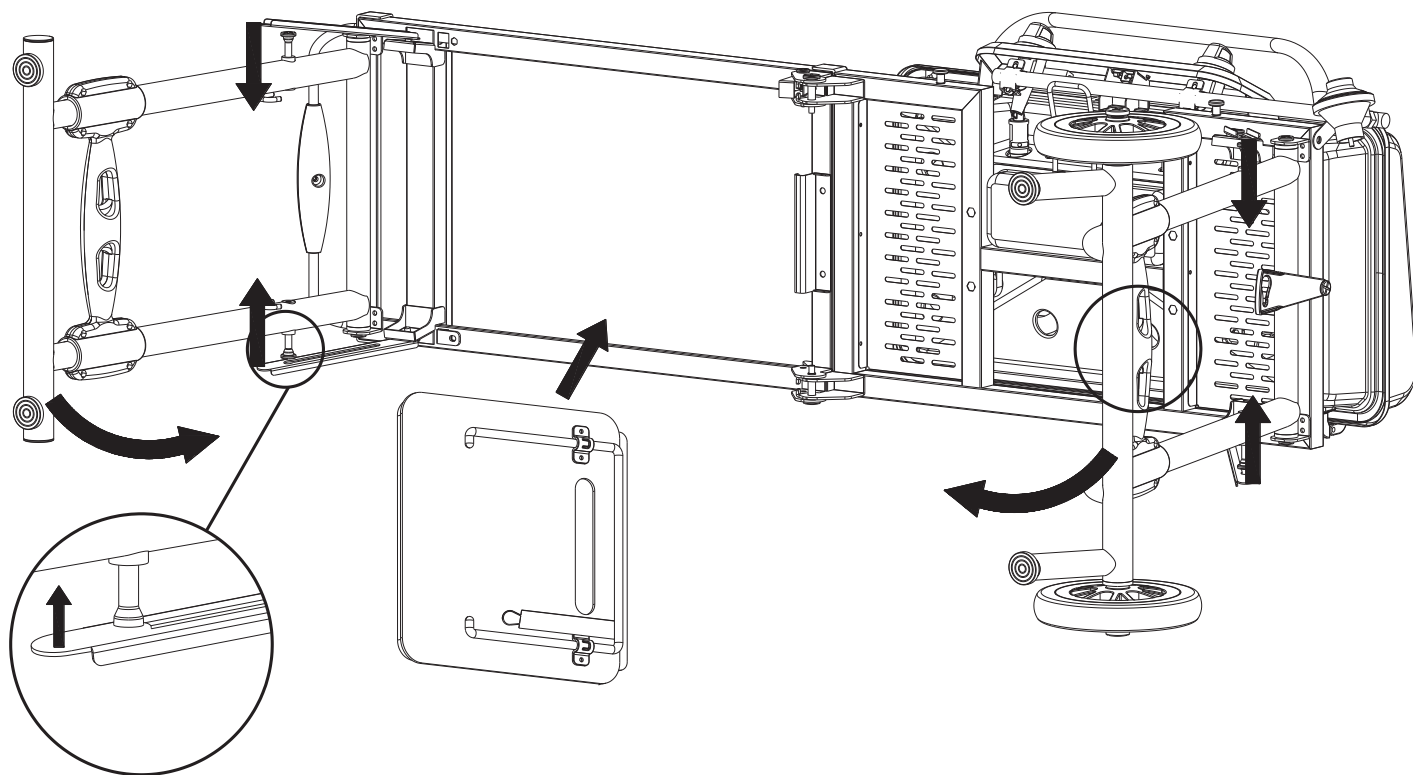
- Gently lay the grill onto the Roll Bars by holding the grill lid handle and underneath the front edge of the table.
- Retract both legs by holding the lock triggers together and pushing the legs in on each side.



SETUP INSTRUCTIONS: FOLDING

STEP 4

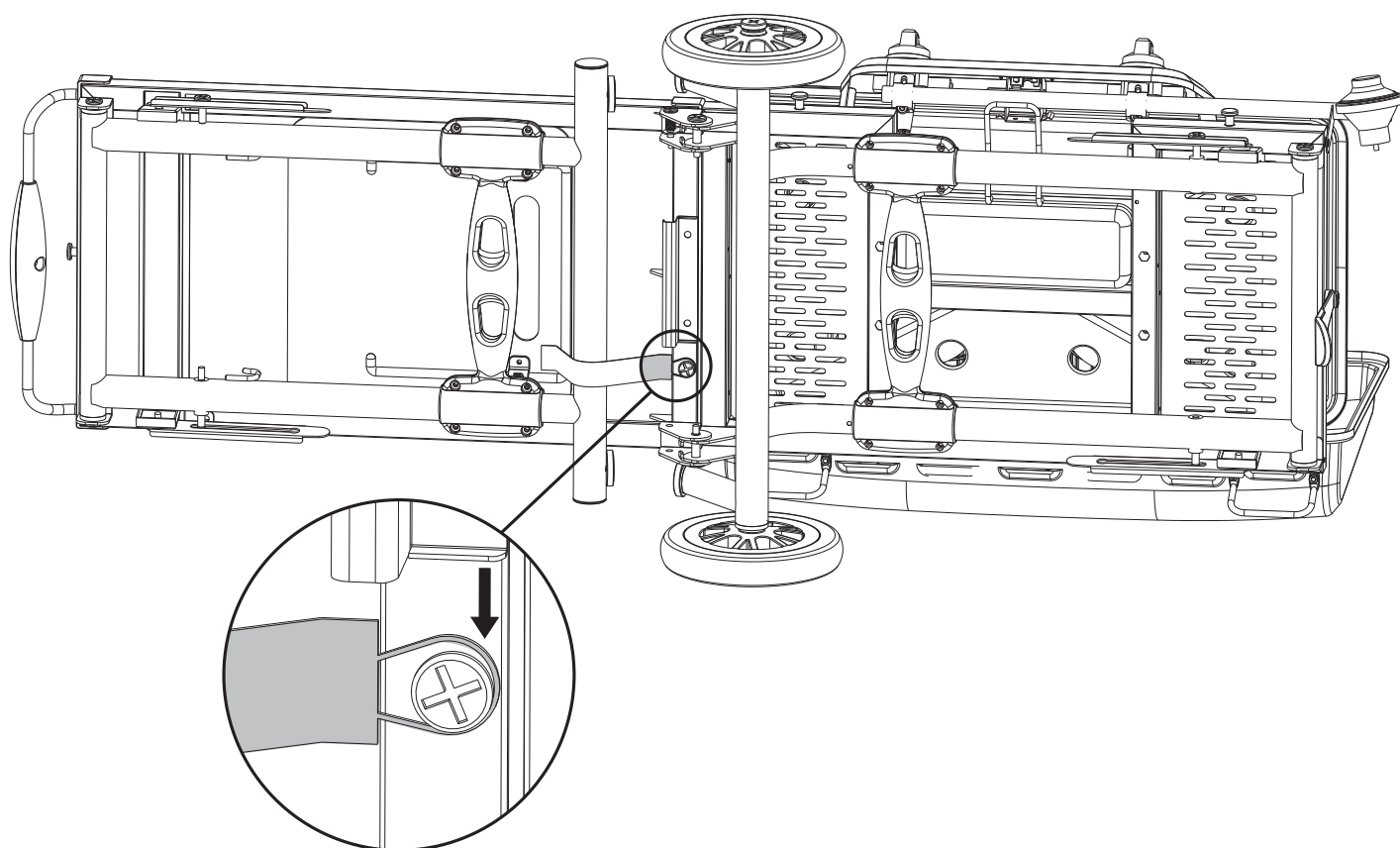
- Hold down the ends of both the front and back corner braces of the left leg, then fold the leg in. The storage tote can be tucked between the table and the now-folded leg.
- Repeat the process to fold in the legs on the grill side.



SETUP INSTRUCTIONS: FOLDING

STEP 5

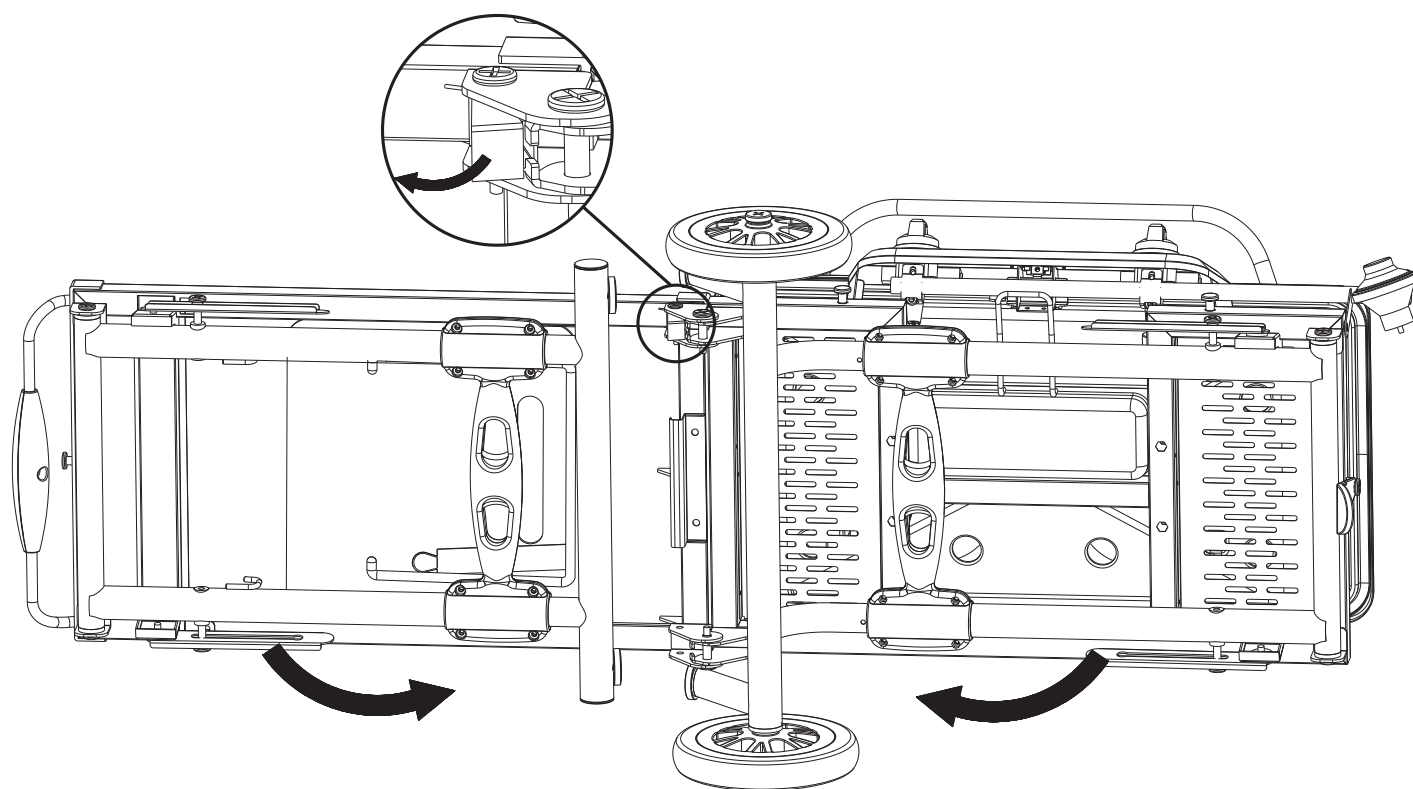
- Ensure the storage tote is placed correctly. The plastic hanging frame should be facing out with the strap close to the right side.
- Pull the strap out from under the leg, wrap it over the leg itself, and hook it to the fastener under the table. The left leg and the carry tote will be secured together when done correctly.



SETUP INSTRUCTIONS: FOLDING

STEP 6

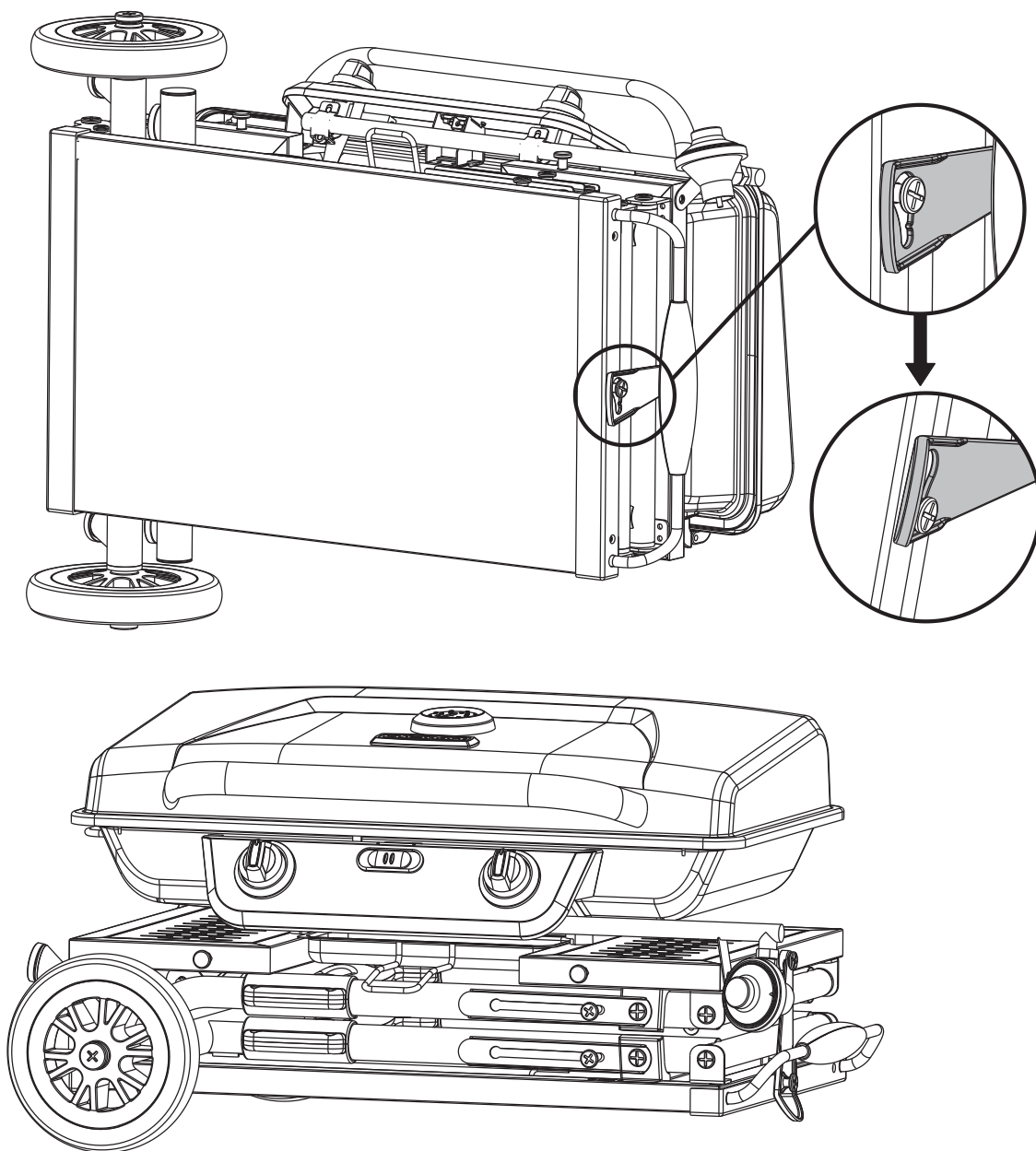
- Release the lock on the center hinge by holding it back slightly.
- Fold the table side under the grill.



SETUP INSTRUCTIONS: FOLDING

STEP 7

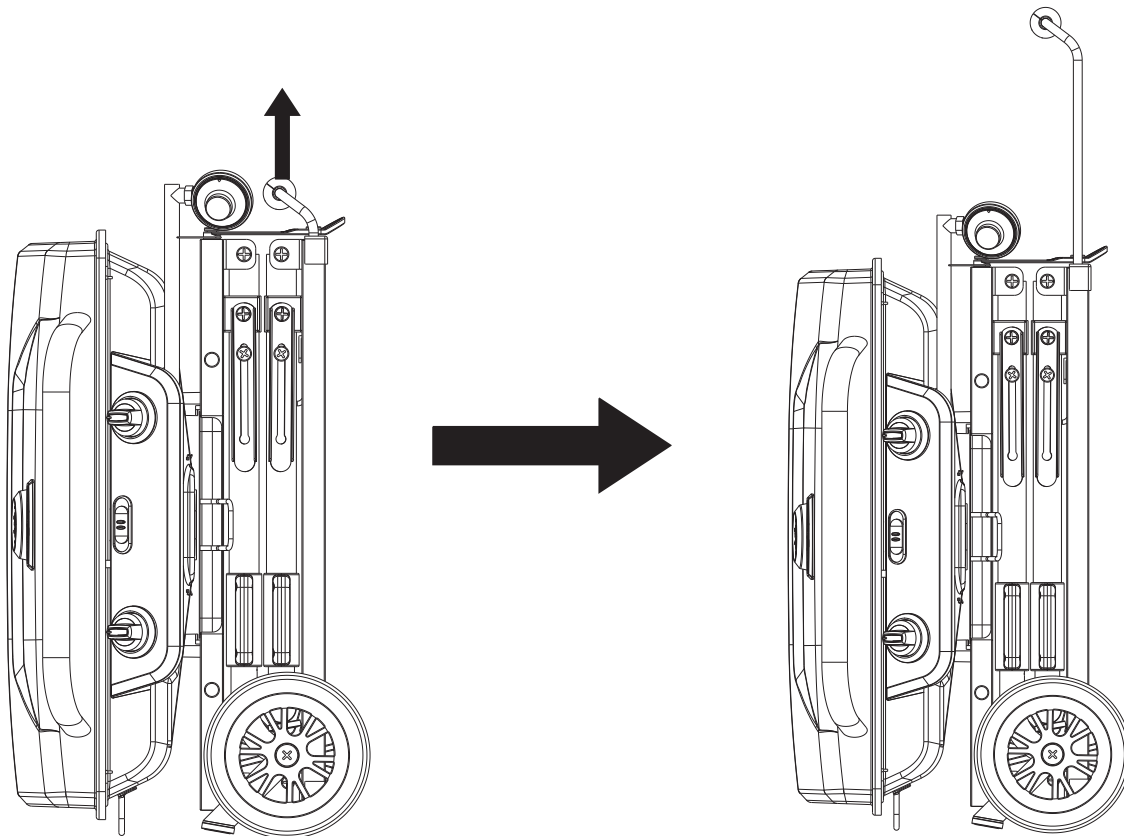
- Release the lock on the center hinge by holding it back slightly.
- Fold the table side under the grill.



SETUP INSTRUCTIONS: FOLDING

STEP 8

- Stand the folded grill up on its wheels and pull the handle out to easily wheel it anywhere.



OPERATING OUTDOOR GRILL (INSTRUCTIONS)

CONNECTING THE LIQUID PROPANE (LP) CYLINDER

- Confirm the cylinder valve matches the mating style of the regulator. This product is equipped with a CGA no. 600 LP cylinder connection.
- Make sure the burner valve is in the “OFF” position. If not, push the knob in and turn it clockwise until the words “OFF” is displayed on the top of the knob.
- Inspect the regulator assembly to ensure there is no debris or damage.
- Thread the LP cylinder onto the regulator by hand until tight. Do not use tools because they can damage the components resulting in a dangerous gas leak. See Detail [I].
- Before lighting the product conduct a leak test.

LEAK TEST PROCEDURE

- Connect a LP cylinder that is not empty.
- Create a solution of 80% water and 20% liquid soap in a spray bottle.
- Apply the soap solution to the connection points of the regulator and look for active bubbling which indicates a gas leak. Locations to check are circled in Detail [II].
- If a leak is detected hand tighten the LP tank connection to see if it stops.
- If the leak continues disconnect the LP cylinder and contact our customer care team for further assistance at 866-994-6390 or email outdoors@cuisinart.com.

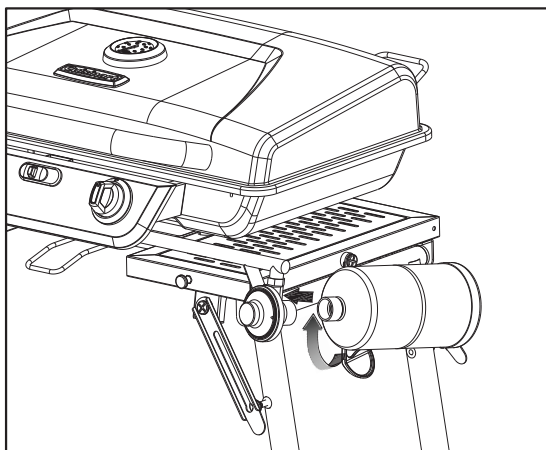


WARNING:

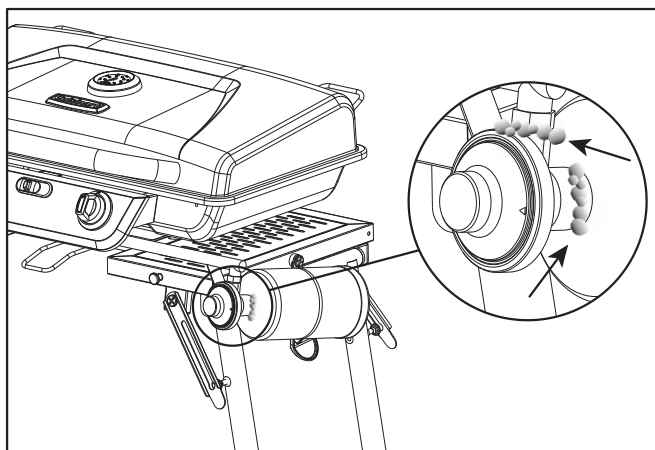
Check all gas supply fittings for leaks regularly. Do not use the product until all connections have been checked and do not leak. Do not smoke while leak testing. Never leak test with an open flame.

DISCONNECTING THE LIQUID PROPANE (LP) CYLINDER

- Press in and then turn the burner knobs clockwise to “OFF”, then wait until all surfaces are cool.
- Detach the LP cylinder from the regulator by turning the LP cylinder counterclockwise until it comes off.
- Place dust cap on cylinder valve outlet whenever the cylinder is not in use. Only install the type of dust cap on the cylinder valve outlet that is provided with the cylinder valve. Other types of caps or plugs may result in leakage of propane.



Detail [I]



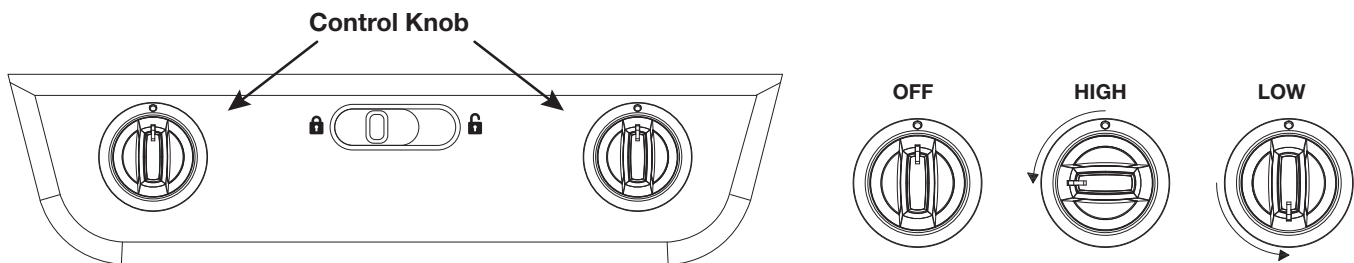
Detail [II]

OPERATING OUTDOOR GRILL (INSTRUCTIONS)

OUTDOOR USE ONLY / NEVER LEAVE UNATTENDED

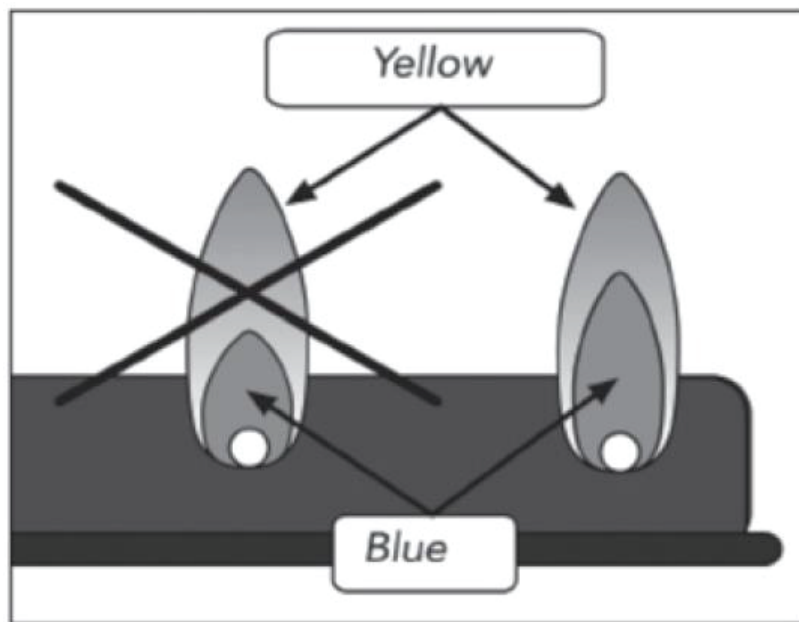
⚠ WARNING: DO NOT stand with any body parts over active burner.

1. Check that the burner knob is in the “OFF” position. Thread the propane cylinder to the regulator and screw it in tightly by hand.
2. Open the lid. Push the control knob in and slowly turn it counterclockwise until you hear a click and HIGH is displayed.
3. If ignition does not occur 2 seconds after the click, turn the burner knob off and try again. If after several attempts it still fails to ignite the burner, call our customer service team at 866-994-6390 for assistance.
4. Burner will start in the HIGH position, adjust to desired power level by turning the knob counterclockwise.
5. Let the unit pre-heat for at least 10-15 minutes before beginning to cook.



FLAME CHARACTERISTICS

Check for good burner flame characteristics. The entire burner tube should be lit, and the flame should be touching the burner with a stable blue color. Some intermittent yellow tips on the flames are OK. Indicators of a problem could be if the burners are not fully lit, there is persistent yellow, excessive noise, or flames lifting away from the burner.



CARE AND MAINTENANCE

CLEANING AND CARE

- Empty and clean the grease pan regularly and be careful not to allow it to overflow. Accumulated grease is a fire hazard. Always empty the grease tray and clean the grill before folding and storing.
- Wash with mild detergent or a non-abrasive cleaner and warm water.
- All surfaces can be cleaned with a non-abrasive sponge or rag and mild detergent with warm water to soften any buildup. For best results wipe grill dry completely with an absorbent towel after to remove all moisture from surfaces.
- Be careful not to damage painted surfaces, as it will expose the steel underneath to the environment which can result in rust. In the event some paint was scratched off a surface it is recommended to clean off any rust and cover it with matching paint.
- To help avoid corrosion like rust or weathering of painted surfaces, it is recommended to store this grill indoors or away from the elements when not in use.



Note: DO NOT leave the grill outside during inclement weather unless it is covered. Rain water can collect inside of the grill, the grill body or the grease cups if left uncovered.

MAINTENANCE

- There is very little care and maintenance needed for this product which is designed and made of materials that will last for many years with normal use.
- Following these instructions will improve the longevity and quality of cooking. Keeping appliance area clear and free from combustible materials, gasoline, and other flammable vapors and liquids.
- Not obstructing the flow of combustion and ventilation air.
- Keeping the ventilation opening(s) of the cylinder free and clear from debris.
- It is recommended to disassemble the burner and clean both inside and outside at least twice a year and especially after long storage. Thoroughly dry the inside and outside of the burner before reassembly. A clogged burner can lead to a fire beneath the appliance.
- Install the burner by inserting the venturi side into the hole in the front of the burner box. Gently move the burner around in the hole until you find the center and can insert it all the way. You will know it is right when the burner points straight out of the hole and the tab at the back of the burner box lines up with the burners corresponding hole. Reinstall the screw to lock the burner in place.
- When the grill is not in use, turn the control knob to the "OFF" position, then detach LP cylinder.
- Keep area adjacent to the burner box clear of debris and free of anything flammable or combustible.
- The manufacturer has properly located the burner with respect to the orifice to allow the appliance to burn effectively. Please do not attempt to adjust the burner. It is preset to the factory specifications.

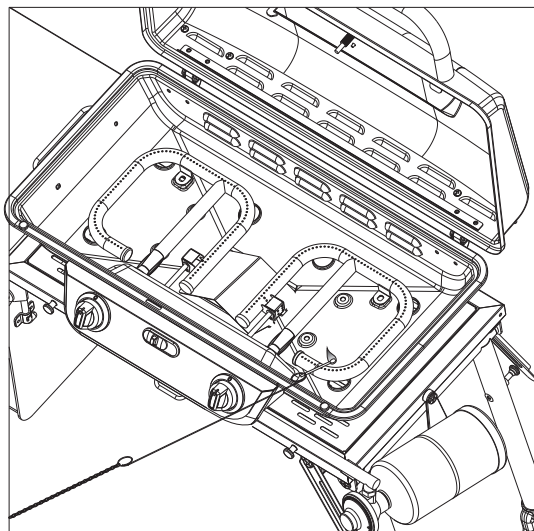
TROUBLE SHOOTING

Problems	What To Do
Grill will not light.	<ul style="list-style-type: none"> • Check to see if the propane cylinder is empty. • Check burner ports for any blockage. You may need to disassemble the burner to fully clear any blockages. • Check the gas nozzle on the burner for an obstruction. If nozzle is blocked, clean with a needle or thin wire. NEVER USE A WOODEN TOOTHPICK.
Burner flame is orange on high power or heat is lower than expected.	<ul style="list-style-type: none"> • Check for spiders and insects. • Call customer service at 866-994-6390 or email outdoors@cuisinart.com
Low heat with the control knob on the "HIGH" setting.	<ul style="list-style-type: none"> • Make sure the Grill area is clear of dust. • Make sure the burner and orifice are clean. • Check for spiders and insects. • Is there adequate gas supply available? • Is the Grill being preheated for 15 minutes?

MATCH LIGHT INSTRUCTIONS

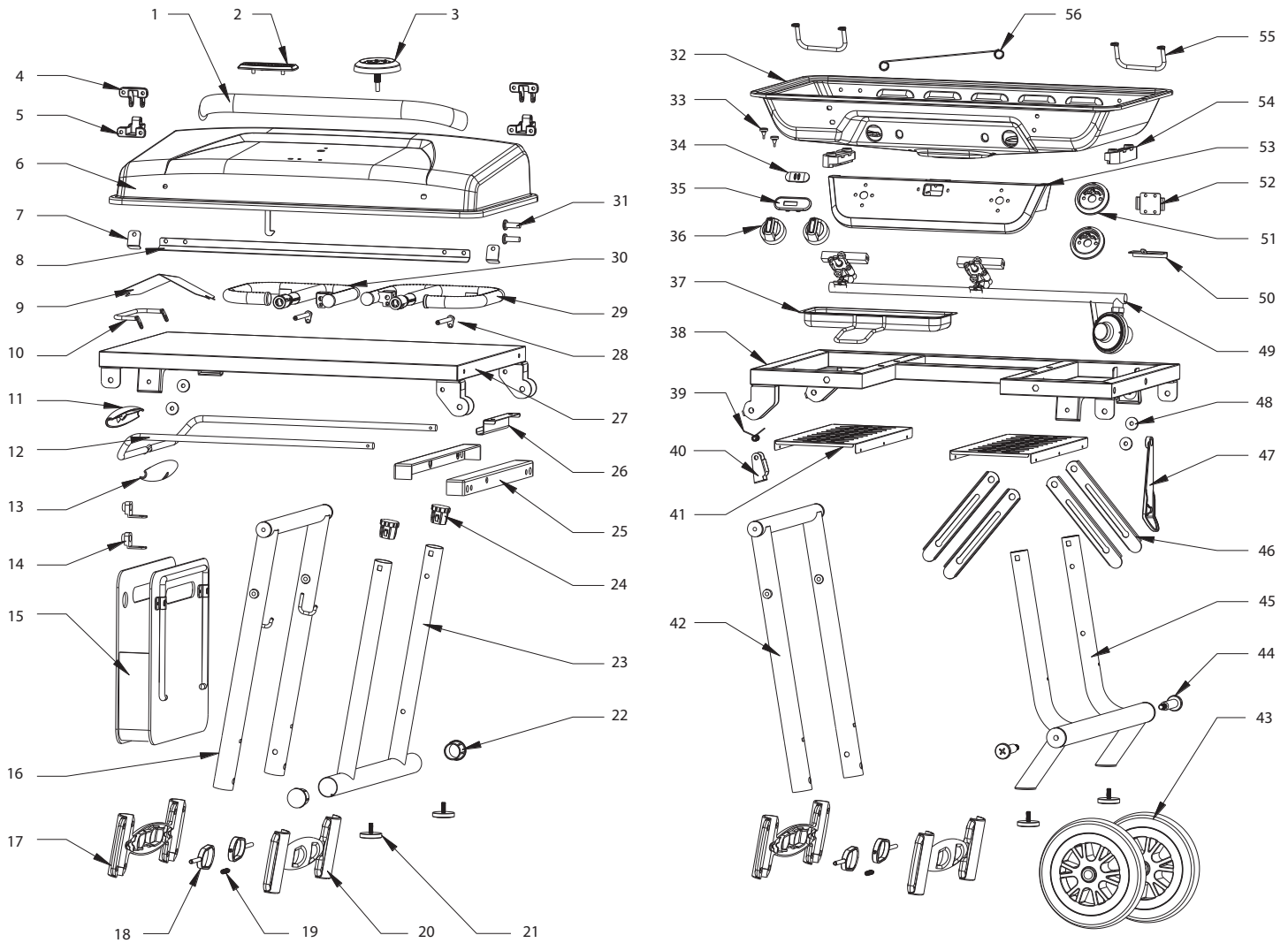
If for any reason you want to use a match to start this product please follow these instructions:

- Remove the lid, Grill top, or any other obstructions from the top of the burner.
- Verify the propane tank is installed and when turning control knob, gas flows through the burner.
- Locate the match holder which is installed on the right side of the Grill body.
- Slip a match into the ring clip at the end of the match holder.
- Strike the match.
- Turn the burner knob to the HIGH position then move the lit match towards the burner ports through the gap in the flame tamer. Burner will light.
- Once burner is lit, turn the burner knob to the LOW position and place Grill top and lid back on.



EXPLODED VIEW & PARTS LIST

For replacement parts, call our customer service department 866-994-6390, 9 a.m.-5 p.m., EST, Monday-Friday or email outdoors@cuisinart.com NOTE: Not all parts are replaceable.



EXPLODED VIEW & PARTS LIST

For replacement parts, call our customer service department 866-994-6390, 9 a.m.-5 p.m., EST, Monday-Friday or email outdoors@cuisinart.com NOTE: Not all parts are replaceable.

Part	Description	Quantity
1	Grill Lid Handle	1
2	Logo Badge	1
3	Thermometer	1
4	Upper Lid Hinge	2
5	Lower Lid Hinge	2
6	Lid	1
7	Grate Stopper, Front	2
8	Grate Stopper, Back	1
9	Heat Shield	1
10	Folded Support Leg	1
11	Suitcase Handle A	1
12	Suitcase Rod	1
13	Suitcase Handle B	1
14	Suitcase Handle Guide	2
15	Storage Tote	1
16	Upper Left Leg	1
17	Leg Frame A	2
18	Leg Pin	4
19	Leg Pin Spring	2
20	Leg Frame B	2
21	Adjustable Leveling Feet	4
22	Leg Caps	2
23	Lower Left Leg	1
24	Leg Inner Stops	4
25	Table Trim	2
26	Storage Tote Hook	1
27	Side Table	1
28	Ignitor	2

Part	Description	Quantity
29	Right Burner	1
30	Left Burner	1
31	Lid Hinge Pin	2
32	Grill Body	1
33	Lid Bumper	2
34	Lid Lock	1
35	Lid Lock Bezel	1
36	Knob	2
37	Grease Cup	1
38	Grill Frame	1
39	Table Lock Spring	1
40	Table Lock	1
41	Grill Frame Cover	2
42	Upper Right Leg	1
43	Wheel	2
44	Wheel Axle	2
45	Lower Right Leg	1
46	Leg Corner Brace	4
47	Frame Latch	1
48	Leg Washer	4
49	Gas Manifold	1
50	Lid Lock Slider	1
51	Knob Bezel	2
52	Lid Lock Spring Plate	1
53	Control Panel	1
54	Grill Mount	2
55	Roll Bar	2
56	Match Lighter	1

LIMITED WARRANTY

Subject to the exclusions and limitations contained herein, Conair LLC dba Cuisinart ("Cuisinart") warrants that the Cuisinart® Prep 'n Go Folding Gas Grill will be free from material defects in materials and workmanship under normal home use conditions for a period of three (3) years beginning on the date the Product was purchased in its original, sealed packaging, unless otherwise specified in this Limited Warranty. This Limited Warranty is only for U.S. consumers (defined herein as purchasers at retail for personal, family, or household use) who originally purchase the Product from Cuisinart or an authorized Cuisinart® reseller (if you are unsure whether a retailer or other point of sale is an authorized or unauthorized Cuisinart reseller, contact Cuisinart).

This Limited Warranty does NOT cover:

- Normal wear and tear;
- Any Product purchased by commercial purchasers or for commercial or non-household uses;
- Accessories, parts, or software added to the Product after the system is shipped from Cuisinart;
- Any costs associated with the replacement or repair of the Product, including labor, installation, or other costs incurred by you without prior Cuisinart approval;
- Damage to the Product, defective conditions, or nonconformities due to: (1) external causes, including shipping, accidents, abnormal conditions (such as mechanical or environmental); (2) usage not in accordance with Product instructions; (3) misuse, neglect, unauthorized alteration, unauthorized repair; and (4) acts of god or other events beyond Cuisinart's control;
- Though necessary repairs and maintenance might be performed by any company, damage caused by you or any nonauthorized third party, may void, this Limited Warranty;
- Damage caused by accessories or replacement parts not specifically authorized by Cuisinart, may void, this Limited Warranty; and
- Any Product where the original Product identification markings (trademark or serial number) have been removed, altered, or obliterated from the Product.

It is recommended that you visit the website, <https://cuisinart.registria.com>, for a fast, efficient way to complete your product registration. However, product registration does not eliminate the need for the consumer to maintain the original proof of purchase in order to obtain the warranty benefits. In the event that you do not have proof of purchase date, the purchase date for purposes of this Limited Warranty will be the date of manufacture.

CALIFORNIA RESIDENTS ONLY

The three (3) year Limited Warranty period begins on the date the Product was delivered, which may be different than the date the Product was purchased. California residents also have the option of obtaining the benefits of this Limited Warranty by bringing the Product to (A) the store where it was purchased or (B) another retail store that sells Cuisinart products of the same type. The retail store shall then, according to its preference, either repair the Product, refer the consumer to an independent repair facility, replace the Product with another identical or reasonably equivalent product, or refund the purchase price less the amount directly attributable to the consumer's prior usage of the Product. California residents may also, according to their preference, return nonconforming products directly to Cuisinart for repair or, if necessary, replacement with another identical or reasonably equivalent product by calling our Consumer Service Center toll-free at 1-800-726-0190. Cuisinart will be responsible for the cost of such repair, replacement, and/or shipping and handling for such nonconforming products under warranty.

THIS LIMITED WARRANTY GIVES YOU SPECIFIC LEGAL RIGHTS, AND YOU MAY ALSO HAVE OTHER RIGHTS THAT VARY FROM STATE TO STATE OR BY JURISDICTION. IN THE EVENT THIS LIMITED WARRANTY IS BREACHED, YOU MAY HAVE CLAIMS FOR REPLACEMENT, DAMAGES, OR OTHER PENALTIES

LIMITATIONS OF LIABILITY/ADDITIONAL LIMITATIONS AND EXCLUSIONS

ALL EXPRESS AND IMPLIED WARRANTIES ARE LIMITED IN DURATION TO THE LIMITED WARRANTY PERIOD. NO WARRANTIES APPLY AFTER THAT PERIOD. SOME STATES DO NOT ALLOW LIMITATIONS ON HOW LONG AN IMPLIED WARRANTY LASTS, SO THIS LIMITATION MAY NOT APPLY TO YOU. CUISINART'S RESPONSIBILITY UNDER THIS OR ANY OTHER WARRANTY, IMPLIED OR EXPRESS, IS LIMITED TO REPAIR, REPLACEMENT, OR REFUND, AS SET FORTH ABOVE. THESE REMEDIES ARE THE SOLE AND EXCLUSIVE REMEDIES FOR ANY BREACH OF WARRANTY. TO THE MAXIMUM EXTENT PERMITTED BY LAW, CUISINART IS NOT RESPONSIBLE FOR ANY DIRECT, INDIRECT, SPECIAL, INCIDENTAL, OR CONSEQUENTIAL DAMAGES RESULTING FROM ANY BREACH OF WARRANTY OR UNDER ANY OTHER LEGAL THEORY (INCLUDING, BUT NOT LIMITED TO, LOST PROFITS, DOWNTIME, GOODWILL, DAMAGE TO OR REPLACEMENT OF EQUIPMENT AND PROPERTY, AND ANY COSTS OF RECOVERING, REPROGRAMMING, OR REPRODUCING ANY PROGRAM OR DATA STORED IN OR USED WITH A SYSTEM CONTAINING THE PRODUCT), EVEN IF CUISINART HAS BEEN ADVISED OF THE POSSIBILITY OF SUCH DAMAGES. SOME STATES DO NOT ALLOW THE EXCLUSION OR LIMITATION OF INCIDENTAL OR CONSEQUENTIAL DAMAGES, SO THE ABOVE LIMITATIONS OR EXCLUSIONS MAY NOT APPLY TO YOU. ALL EXPRESS AND IMPLIED WARRANTIES ARE LIMITED IN DURATION TO THE LIMITED WARRANTY PERIOD. NO WARRANTIES APPLY AFTER THAT PERIOD. SOME STATES (OR JURISDICTIONS) DO NOT ALLOW LIMITATIONS ON HOW LONG AN IMPLIED WARRANTY LASTS, SO THIS LIMITATION MAY NOT APPLY TO YOU.

This Limited Warranty is issued by:

Conair LLC
1 Cummings Point Road
Stamford, CT 06902
1-800-726-0190

**Questions, problems, missing parts? Before returning to your retailer, call our customer service department at 866-994-6390, 9 a.m.-5 p.m., EST, Monday-Friday or email outdoors@cuisinart.com
Visit our website: www.cuisinart.com**

Cuisinart
Outdoors™

2412

Model# CGG-288
Cuisinart Outdoors a division of Conair LLC
Newton, MA 02466

Master Contract: