

CUSTOMER NAME \_\_\_\_\_

Project Name \_\_\_\_\_

Date \_\_\_\_\_ Type \_\_\_\_\_

Catalog Number \_\_\_\_\_

## Daintree

### Wireless Scene Switch (WWD2-4)

The **Wireless Scene Switch (WWD2-4)** is part of the Daintree Wireless Controls product portfolio, a wireless controls solution for lighting and building control, monitoring, and optimization. Daintree Wireless controls provide a highly scalable solution to address evolving environmental regulations and transform spaces into intelligent environments for buildings of all sizes.

## PRODUCT OVERVIEW

The WWD2-4 is a battery-powered 4-button scene switch that takes the place of a standard wall switch. Using wireless communications, this switch can be programmed to set scene levels, and can be used to turn lights on or off. Alternatively, the scene switch can be programmed to control 2 zones as a dimmer switch when commissioned in Daintree Network mode.

Installation is quick and easy without the need for any wires, plenum access or wall cavity, while its sleek, low-profile design will complement any office or commercial environment.

- Suitable for many applications, including commercial office, education, healthcare and retail.
- Simple wall mount
- Slim form factor
- Completely wireless installation, communicates to Daintree EZ Connect or Daintree Networked nodes.

## 4-BUTTON WALL DIMMER (WWD2-4SM & WWD2-4IW)

**The 4-button switch allows to program complex scenes for conference rooms or classrooms**

### Mounting

- Surface mount (WWD2-4SM)
  - Flexible mounting options (i.e. Entrance, workstation, podium, conference table)
- Recess Mount (WWD2-4IW)
  - Mount in wall Junction Box
  - Ability to Gang Devices

### Commissioning

- Daintree EZ Connect App for Zonal Room Based Control (app available on Apple App Store)
- Daintree Controls Software (DCS) in Daintree Networked

## KEY FEATURES AND BENEFITS

- Works on Daintree EZ Connect or Daintree Networked Wireless Controls systems
- Intuitive personal controls provide dimming or scene control
- Provides 3-way capability and can connect up to 5 switches per zone
- Decorator style
- Completely wireless installation. Communicates to Daintree Wireless Controls, nodes and devices
- Simple In-Wall or Surface Mount Options
- 5-year battery operation

## CUSTOMER NAME

Project Name \_\_\_\_\_

Date \_\_\_\_\_ Type \_\_\_\_\_

Catalog Number \_\_\_\_\_

## WARRANTY

Current offers a limited Warranty across its Daintree Portfolio. The table below summarizes the Warranty terms. For additional information, please review the Limited Warranty Document on the Daintree Homepage.

COMPONENT	WARRANTY PERIOD	COVERAGE DETAILS
<b>Daintree Software</b>	1 year (IoT Cloud installed Software) Subscription term (SaaS) 3 years	Current warrants that as long as all applicable fees due are paid, Daintree Software will substantially conform to the applicable published documentation and published specifications for the Warranty Period.
<b>System Controller</b>	3 years	100% parts coverage. Warranty for non-Daintree software (such as operating system software) is provided by the respective software; Current makes no warranty with respect to non-Daintree software.
<b>WACs</b>	5 years	100% parts coverage
<b>Wireless Adapters</b>	5 years	100% parts coverage
<b>Wireless Devices</b>	5 years	100% parts coverage, excluding batteries.
<b>Wireless Thermostats</b>	2 years	100% parts coverage

Daintree wireless controls are available integrated and preinstalled in many Current lighting fixtures. Any 0-10V lighting fixture can be enabled with Daintree controls with a Daintree LCA kit.

For a complete list of integrated sensors, look for the Daintree Wireless Controls icon on the product pages on [gecurrent.com](http://gecurrent.com)

## SPECIFICATIONS - WWD2-4SM

<b>Dimensions:</b>	114mm H x 70mm W x 15mm D
<b>Weight:</b>	130g
<b>Power Supply:</b>	(4) AAA 1.5V battery
<b>Battery Life:</b>	5yr (normal operation)
<b>Operating Environment:</b>	-10°C to 40° (Indoor Use Only)
<b>Status Indicator:</b>	Networked joined/Button triggered
<b>Mounting:</b>	Surface mounted, screw hole in backplate, cover can be removed, handheld
<b>Warranty:</b>	5 Years

## SPECIFICATIONS - WWD2-4IW

<b>Dimensions:</b>	114mm H x 70mm W x 36mm D
<b>Weight:</b>	130g
<b>Power Supply:</b>	(4) AAA 1.5V battery
<b>Battery Life:</b>	5yr (normal operation)
<b>Operating Environment:</b>	-10°C to 40° (Indoor Use Only)
<b>Status Indicator:</b>	Networked joined/Button triggered
<b>Mounting:</b>	Mounts into junction box
<b>Warranty:</b>	5 Years

## PRODUCT CERTIFICATIONS

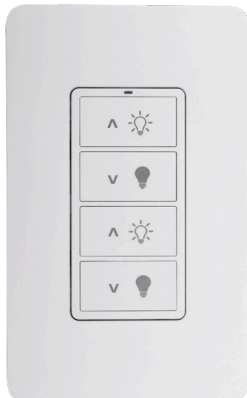
**UL** US  
LISTED  
Operating Control  
E486320

**FCC** FCC ID: 2AS3F-WWD2SM  
IC: 25008-WWD2SM  
FCC ID: 2AS3F-WMD2IW  
IC: 25008-WMD2IW

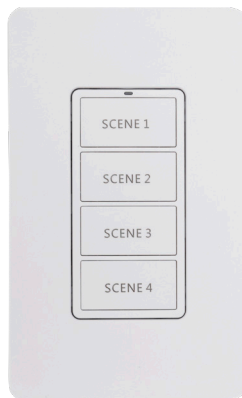


## ORDERING INFORMATION

SKU	PRODUCT DESCRIPTION
<b>WWD2-4SM</b>	Daintree Wireless 4-button Surface Mount Scene Switch
<b>WWD2-4IW</b>	Daintree Wireless 4-button Wall Mount Scene Switch



WWD2-4SM



WWD2-4IW

**CUSTOMER NAME**

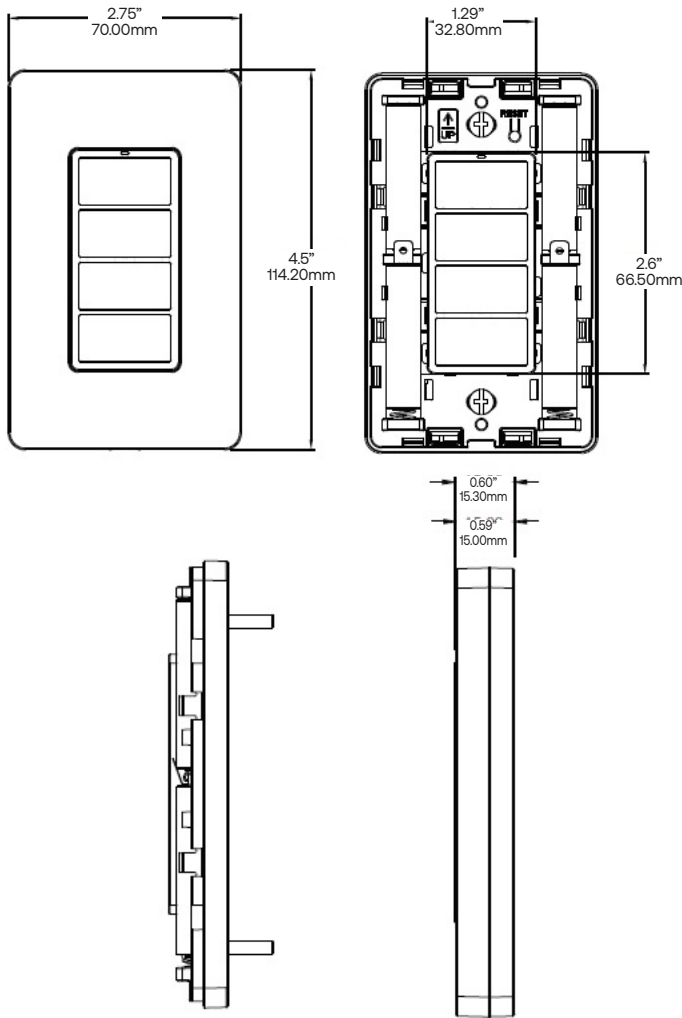
Project Name \_\_\_\_\_

Date \_\_\_\_\_ Type \_\_\_\_\_

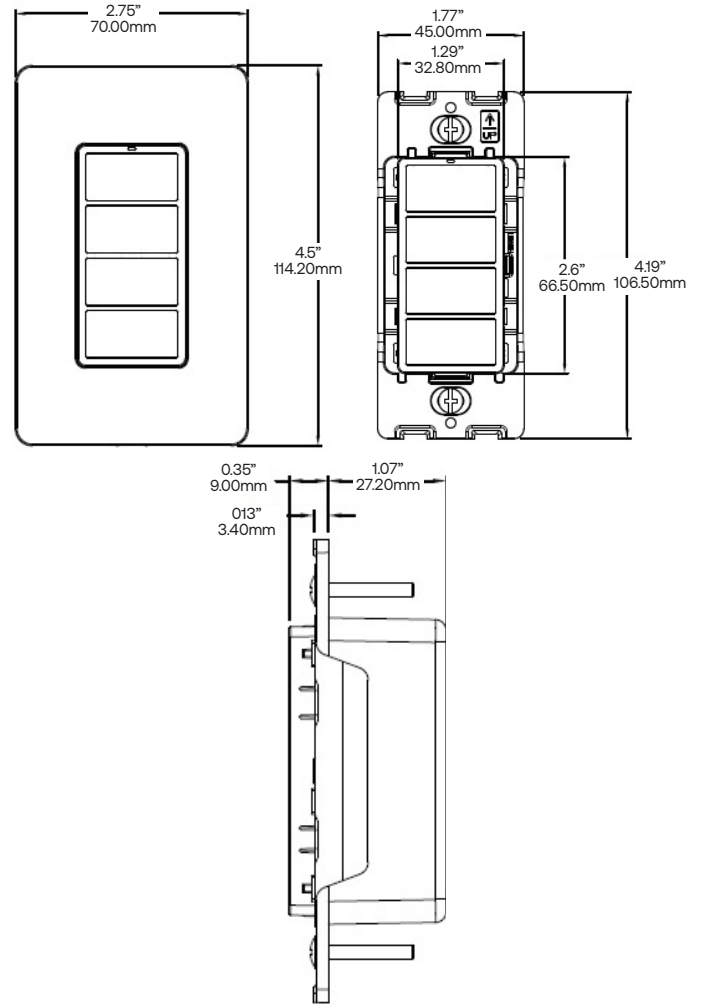
Catalog Number \_\_\_\_\_

**DIMENSIONS**

**WWD2-4SM**



**WWD2-4IW**



**Button Functionality**

Button	Functionality	Four Scene Personality
First Button	Short press Double short press Hold	SCENE 1 turns ON
Second Button	Short press Double short press Hold	SCENE 2 turns ON
Third Button	Short press Double short press Hold	SCENE 3 turns ON
Fourth Button	Short press Double short press Hold	SCENE 4 turns ON

**LED Indicator**

<b>Rapid flash (12 times per second) for up to 30 seconds</b>	Device is trying to join a network
<b>Solid ON for 10 seconds</b>	Device successfully joined a network
<b>Flashes once (100ms duration)</b>	Device has been activated while in the network
<b>Flashes ON 2 seconds every 30 seconds</b>	Batteries need to be replaced
<b>Flashes twice (100ms duration)</b>	Device has entered dual zone personality mode
<b>Flashes four times (100ms duration)</b>	Device has entered four scene personality mode