

# Wave Electronics MX0404 and MX0808 Driver

## 1 CONTENTS

---

2	Introduction .....	1
3	Device connection.....	2
3.1	Ethernet .....	2
3.2	RS232 .....	2
4	Driver Installation & Configuration .....	2
4.1	Driver Configuration.....	3
4.2	Driver Commands .....	3
4.3	Driver Variables.....	4
5	Demo Program.....	4
6	Troubleshooting.....	5

## 2 INTRODUCTION

---

This driver has been designed to provide two-way control of a Wave Electronics MX0404 and MX0808 matrix via TCP/IP and RS232. The driver includes a fully featured Virtual Panel design to aid integration and offers control commands as well as feedback of the current status.

This driver has been developed and tested using RTI Integration Designer version 9.14.0. The Driver has been tested with MX0404 and MX0808 running firmware v1.03.

## 3 DEVICE CONNECTION

---

This driver provides two connection methods. Please see configuration suggestions below.

### 3.1 ETHERNET

When connecting to your matrix via ethernet we suggest you set your matrix up with a static IP address

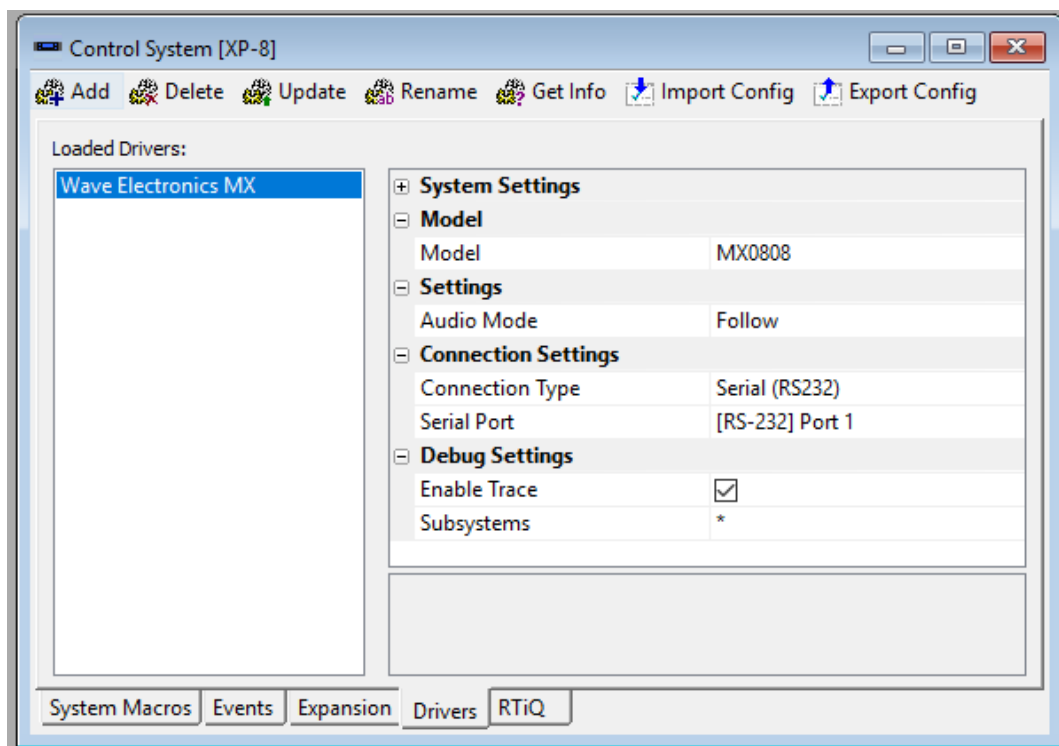
### 3.2 RS232

Connect your matrix to your RTI processor using the RTI RJ45 to DB9 connection and a straight ethernet cable.

## 4 DRIVER INSTALLATION & CONFIGURATION

---

Open your RTI Integration Designer system file (or use the demo programming file entitled “WaveMX\_Demo.rti”). Select your XP series processor from the System Workplace window and choose the Drivers tab.



If the driver does not appear in the Loaded Drivers list, select Add and choose to open the “WaveMX.rtiDriver” file from the driver package.

## 4.1 DRIVER CONFIGURATION

The driver features a number of configuration properties that must first be completed. Please see the table below for details.

Category	Name	Description
System Setting	Processor	The processor running the driver
Model	Model	Select which matrix you are controlling
Settings	Audio	<b>Only available if MX0808 is selected</b> Select if the audio should <b>follow</b> the video or if it is switched <b>independently</b> .
Connection Settings	Connection Type	Mode of connection between the unit and processor
	IP Address	<b>Only available if TCP is selected</b> IP Address of the unit
	Port	<b>Only available if TCP is selected</b> TCP connection port
	Serial Port	<b>Only available if RS232 is selected</b> The serial port the unit is connected to on the processor
Debug Settings	Enable Trace	SUPPORT USE ONLY
	Subsystems	SUPPORT USE ONLY

## 4.2 DRIVER COMMANDS

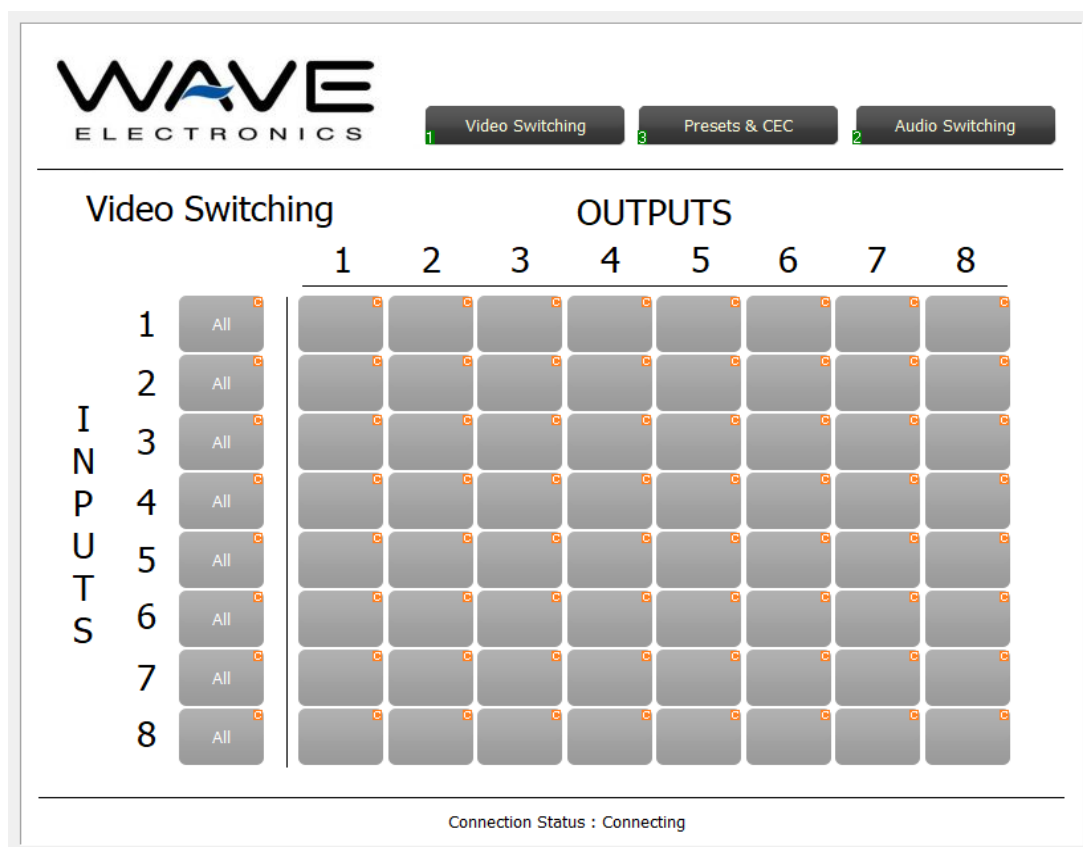
Category	Name	Description
Video Switching	Switch Input to Output	Switch input to output
	Switch One input to all Outputs	Switch one input to all outputs
Audio Switching	Switch Input to Output	Switch input to output
	Switch One input to all Outputs	Switch one input to all outputs
Presets	Scene	Save or Recall a scene
System	Reboot	Reboot the Matrix

## 4.3 DRIVER VARIABLES

Category	Name	Description
Info	Operating Mode	Connection Status with the unit
	Switcher has Audio	Does the switcher have audio (Used for the demo program)
Audio Switching	Switcher has 4 Inputs	Switcher inputs (Used for the demo Program)
	Switcher has 8 Inputs	Switcher inputs (Used for the demo Program)
Output x Video Input	Input y	True when Input y is connected to output x.
Output x Audio Input	Input y	True when Input y is connected to output x.

## 5 DEMO PROGRAM

This driver is provided with virtual panel. It is suggested to run this virtual panel with the demo application prior to add thing this driver to your application to test connectivity with the device.



## 6 TROUBLESHOOTING

---

Prior to contacting support with regards to this driver please run the included demo program and virtual panel to see if you experience your issue with this setup.