

5.75"

3.75"

3.75"

18.75"

3.75"

3.75"

3.75"



# bright starts™

## We believe joy makes moments last forever.

Bright Starts™ exists to bring more joy to every moment. We believe a sprinkle of silly has the power to turn crazy days into crazy dance parties. We see confetti in the chaos, and we know there's nothing a belly laugh can't fix.

This is when the magic happens. When time stands still, and little moments turn into lasting memories.

### How do we do it?!

1. We create opportunities for laughter
2. We tap into the mood-boosting power of uplifting characters
3. We keep kiddos ooh-ing & ahh-ing with fun surprises
4. We mix & match with unexpected combinations
5. We use together-time to spark emotional connection

Bright Starts™ helps families make the most out of playtime and to get swept away in the joy that follows. Because joy is what makes moments last forever.

More joy, more connection.  
Scan to get started.



## Pink Palms™ Tiki Toy Bar™

Activity Gym

1. Grab and squeeze the crinkle medallion
2. Practice motor skills with the bead chaser
3. Explore the leaf texture toy
4. Toys are removable for on the go
5. Compact design is easy to store
6. Easy to clean, machine washable mat



# 0M+

Tummy Time™

Fine Motor™

On-the-Go™

# 3

Ways to play™



# bright starts™

## Pink Palms™ Tiki Toy Bar™

Activity Gym • Gimnasio de Actividades • Tapis D'activité  
Activity-Center • Mata edukacyjna • Palestrina

**EN** Tummy time, lay & play or sit & play

1. Grab and squeeze the crinkle medallion
2. Practice motor skills with the bead chaser
3. Explore the leaf texture toy
4. Toys are removable for on the go
5. Compact design is easy to store
6. Easy to clean, machine washable mat

**ES** Hora de juego sobre la pancita, acostarse y jugar, o sentarse y jugar

1. Agarrar y apretar el medallón crujiente
2. Practicar habilidades motoras con el sujetador de cuentas
3. Explorar el juguete con textura de hoja
4. Incluye 3 eslabones para colgar los juguetes favoritos
5. Diseño compacto fácil de guardar
6. Colchoneta lavable en lavadora fácil de limpiar

**FR** Pour jouer sur le ventre, allongé ou assis

1. Attraper et serrer le médaillon qui bruisse
2. Développer la motricité avec le boulier
3. Explorer la texture du jouet en forme de feuille
4. Les jouets amovibles pour partir en promenade
5. Design compact et facile à ranger
6. Tapis facile à nettoyer, lavable en machine

**DE** Bauchlage, liegen und spielen oder sitzen und spielen

1. Knisterndes Medaillon anfassen und drücken
2. Üben motorischer Fähigkeiten mit Schiebekugeln
3. Spielzeug zum Erkunden der Blattstruktur
4. Mit 3 Verbindungsschleifen zum Aufhängen der Lieblingsspielzeuge
5. Kompaktes Design zur einfachen Lagerung
6. Pflegeleichte, maschinenwaschbare Matte

**PL** Zabawa na brzuszku, na leżąc lub na siedząco

1. Chwytaj i ściskaj szeleszczący medalion
2. Ćwicz umiejętności motoryczne z przesuwanymi koralikami
3. Zdejmowane zabawki do zabawy w podróży
4. Odkrywaj zabawkę o fakturze liścia
5. Kompaktowa konstrukcja ułatwia przechowywanie
6. Łatwa w czyszczeniu mata, którą można prać w pralce

**IT** Gioca a pancia in giù, distenditi e gioca o sediti e gioca

1. Afferra e stringi il medaglione con superficie a rilievo
2. Esercita le abilità motorie con la barra con palline
3. Scopri il giocattolo tattile a forma di foglia
4. Include tre anelli per appendere i giocattoli preferiti
5. Il design compatto lo rende facile da riporre
6. Tappetino lavabile in lavatrice e facile da pulire

## More joy in every moment.™

# bright starts™

# kids2™

File Name: 16932\_EP\_FiveFoldInsert\_050823r1

Brand: BS Epack

Category: PLAY

Product Name: Pink Palms™ Tiki Toy Bar™ Act. Gym

Package Designer: Nureen B.

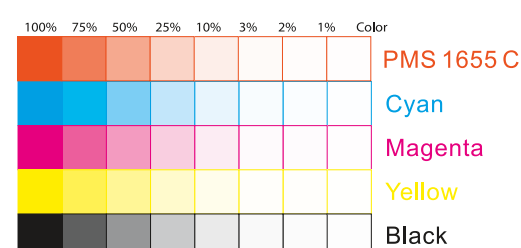
Product Manager: Christen B

Engineer:

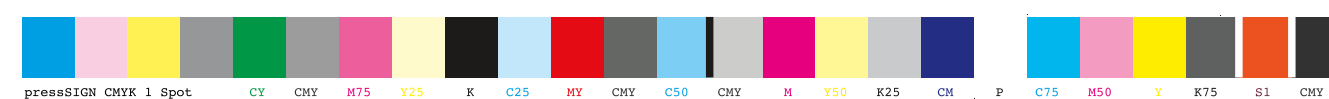
Languages: Languages on Package 3/6

Dimensions: see die line

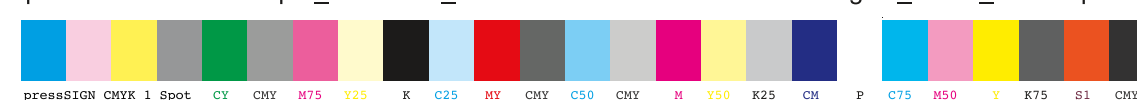
Packaging Prints  
PMS 1655 C plus CMYK



pressSIGN CMYK 1 Spot\_Colourbar\_ISO 12647-2 Coated White Backing v6\_labels\_below i1Pro Contrast Bars.eps



pressSIGN CMYK 1 Spot\_Colourbar\_ISO 12647-2 Coated White Backing v6\_labels\_below.eps



There are two color bars on this proof and in the art file. One to be used with X-rite I1 Pro Spectrophotometer. The other can be used with most other spectrophotometers. Printers must repeat one of the two color bars all the way across the width (grripper edge) of the press sheets on sample runs and production runs. Failure to comply will result in the remaking of film and/or plates at your cost.

数码稿以及设计文件包含了两种色带。一种适用于X-rite (爱色丽) I1 Pro 分光光度计, 另一种适用于其它大部分的分光光度计。在打样或者批量生产时, 印刷厂必须选择其中一种色带并重复添加直到覆盖整张纸的宽度(切口边)。没有按照上述要求而导致重新出菲林、出版的费用将由印刷厂承担。



FRONT Side