

FRONT (4x5in)



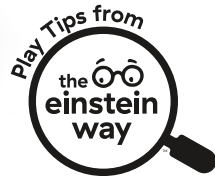
16724

The Einstein Way™ Dive & Discover™ 3-in-1 Submarine Walker Play Tips



Explore & learn aboard a submarine!

3 Ways to Play
Walk, push, & learn



TEACHES



Colors



Shapes



Cause & Effect

BACK (4x5in)



Steer the Adventure

Pilot the submarine on-the-go! Remove the steering wheel for floor play and use it to mimic driving. Encourage baby to "steer" while you teach them directional phrases such as "Turn right, go straight, turn left!"

Make Connections

Find your favorite characters on the submarine! Point out Cal, Opus, and other characters you see. Describe what kind of animal each character is. Then co-watch Baby Einstein Ocean Explorers™ and talk about the familiar faces you see!

Take a Closer Look

Use the submarine to promote baby's visual skills! Encourage baby to explore different colored objects around the house — just like the characters do on the Baby Einstein Ocean Explorers™ series! Say "I see something red — let's take a closer look!" and ask them to find something red too!

Imagine the Possibilities

Take imaginative play for a spin! Engage your toddler in pretend play by asking them to push the walker to "explore" a coral reef or school of fish as they drive through the deep! This movement helps build baby's coordination and balance — and gives baby's imagination a workout too!



Scan to watch these play tips in action!



0.5mm Matte White PP



File Name: 16724_PTC051625

Brand: Baby Einstein

Category: Walker

Product Name: Dive & Discover

Package Designer: Chelsea A

Product Manager:

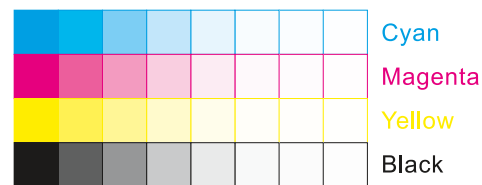
Engineer:

Languages: Languages on Package 1

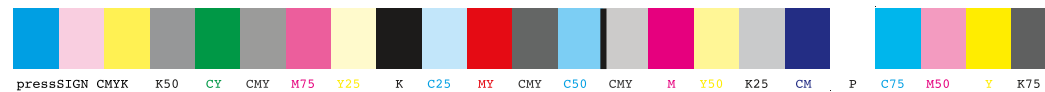
Dimensions: see die line

Packaging Prints

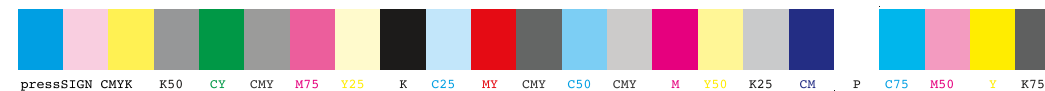
CMYK



pressSIGN CMYK_Colourbar_ISO 12647-2 Coated White Backing v6_labels_below i1Pro Contrast Bars.eps



pressSIGN CMYK_Colourbar_ISO 12647-2 Coated White Backing v6_labels_below.eps



There are two color bars on this proof and in the art file. One to be used with X-rite I1 Pro Spectrophotometer. The other can be used with most other spectrophotometers. Printers must repeat one of the two color bars all the way across the width (gripper edge) of the press sheets on sample runs and production runs. Failure to comply will result in the remaking of film and/or plates at your cost.

数码稿以及设计文件包含了两种色带。一种适用于X-rite (爱色丽) I1 Pro 分光光度计, 另一种适用于其它大部分的分光光度计。在打样或者批量生产时, 印刷厂必须选择其中一种色带并重复添加直到覆盖整张纸的宽度(叼口边)。没有按照上述要求而导致重新出菲林、出版的费用将由印刷厂承担。