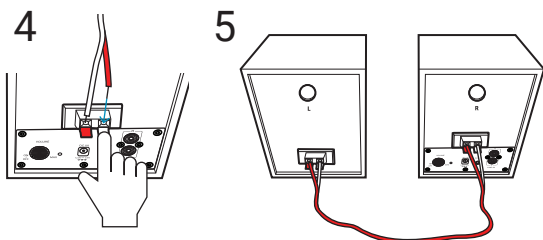
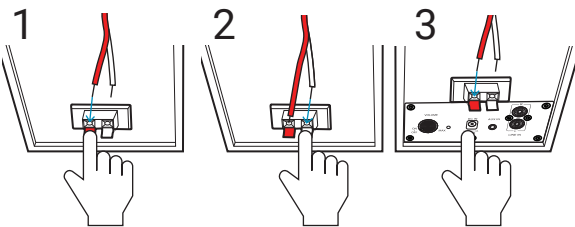
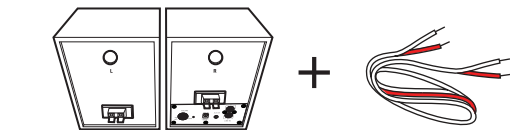
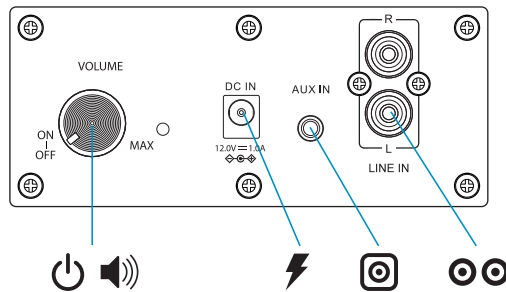
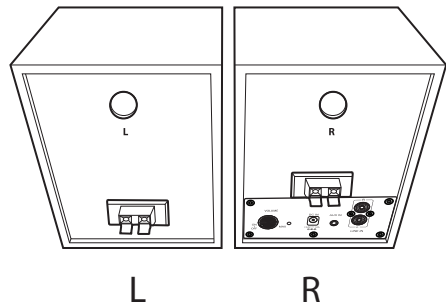
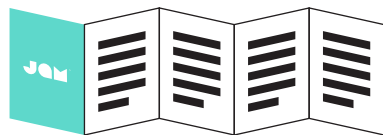
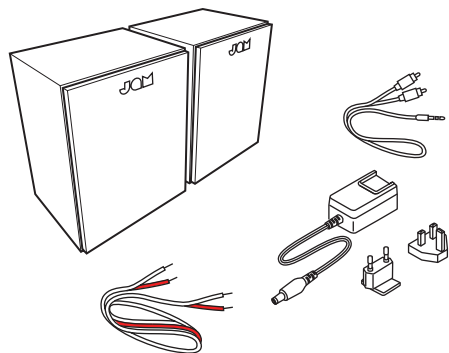


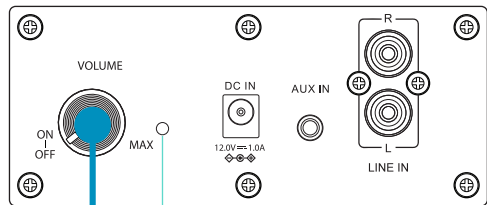
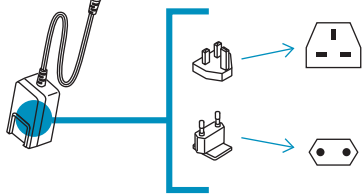
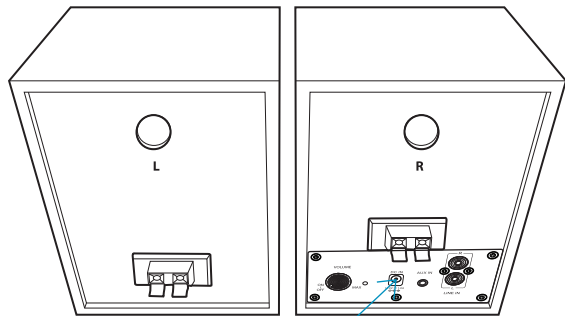


# BOOKSHELF

HX-P300  
Quick-Start Guide  
Guide de démarrage rapide  
Guía de inicio rápido  
Schnellstartanleitung  
Guida rapida

QS-HXP300 © 2024 JAM. All rights reserved. JAM is a registered trademark of HMDX.  
The Bluetooth® word mark and logos are registered trademarks owned by Bluetooth  
SIG, Inc. and any use of such marks by HMDX is under license. / Tous droits réservés /  
Todos derechos reservados / Alle Rechte vorbehalten / Tutti i diritti riservati





On	Off
Allumer	Éteindre
Encendido	Apagar
Accendere	Spegner
Anschalten	Ausschalten
Aanzetten	Utizetten

