

# FRONT (4x5in)



11710

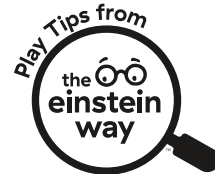
## The Einstein Way™ Airplane Adventure™ 2-in-1 Activity Jumper Play Tips



6-36m

2 in 1

Activity jumper and  
removable electronic  
toy station



TEACHES



# BACK (4x5in)



### Language Lift-Off

Get on baby's level and engage in conversation! Describe each toy they touch and encourage them to interact with it. This boosts baby's vocabulary and helps them connect words with actions!

### Pilot in Training

Fine motor skills are ready to take flight! Encourage baby to grab, press, and move the airplane's levers and buttons to help build fine motor skills. This also helps strengthen their eye-hand coordination!

### Find a Friend

Introduce your baby to the Baby Einstein characters! Point out Zen and her friends on the jumper. Talk about what kind of animal each character is, and then co-view Baby Einstein Ocean Explorers™ to see the gang in action!

### Perfect Match

Matching is an early math skill! Help baby find the characters on the wheel and match them to the faces on the flash cards. Say the character's name and point out key features like colors. "You found Roxy! Look at those red feathers!"



Scan to watch these  
play tips in action!



## 0.5mm Matte White PP



File Name: 11710\_PTC051625

Brand: Baby Einstein

Category: Playgear

Product Name: Airplane Adventure

Package Designer: Chelsea A

Product Manager:

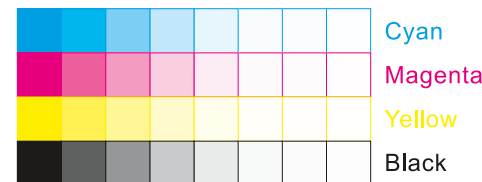
Engineer:

Languages: Languages on Package 1

Dimensions: see die line

### Packaging Prints

CMYK



pressSIGN CMYK\_Colourbar\_ISO 12647-2 Coated White Backing v6\_labels\_below i1Pro Contrast Bars.eps



pressSIGN CMYK\_Colourbar\_ISO 12647-2 Coated White Backing v6\_labels\_below.eps



There are two color bars on this proof and in the art file. One to be used with X-rite I1 Pro Spectrophotometer. The other can be used with most other spectrophotometers.

Printers must repeat one of the two color bars all the way across the width (gripper edge) of the press sheets on sample runs and production runs. Failure to comply will result in the remaking of film and/or plates at your cost.

数码稿以及设计文件包含了两种色带。一种适用于X-rite (爱色丽) I1 Pro 分光光度计, 另一种适用于其它大部分的分光光度计。在打样或者批量生产时, 印刷厂必须选择其中一种色带并重复添加直到覆盖整张纸的宽度(叼口边)。没有按照上述要求而导致重新出菲林、出版的费用将由印刷厂承担。