

FRONT (4x5in)

16982



The Einstein Way™ SuperSeat™ Touch of Tunes™ 3-in-1 Seat Play Tips



6m-3y

30+
Phrases, melodies,
& sounds



TEACHES



BACK (4x5in)



Lighten Up

Make tummy time illuminating for baby! Detach Cal and place him on the floor in front of your baby. Sit facing your child and talk about the piano. Hit the keys to make the lights glow to engage baby and prolong tummy time!

Watch the World Go By

Help baby explore the real world and support their visual development! Sit your baby in the seat by a glass door. Describe what you see by saying, "Look! A bird is flying! Just like Roxy the Red Bird!" This supports baby's vision and helps them make real-world connections!



Engaging Twists & Turns

Twisting helps build baby's trunk strength, control and balance! Join baby on the floor and rotate the toy tray to encourage your child to twist and reach for the toys. This encourages curiosity and builds their muscles in a playful way!

Colorful View

Sit face-to-face with your baby and go on a shape-and-color hunt! Point to each toy and say, "This one is a blue circle! Can you find a yellow star?" Repeat and pause so baby can look, point, or reach. This boosts early color and shape recognition early on!

Scan to watch these
play tips in action!



0.3mm Matte White PP



File Name: 11522_PTC052825

Brand: Baby Einstein

Category: AS

Product Name: SuperSeat™ Touch of Tunes™

Package Designer: Chelsea A

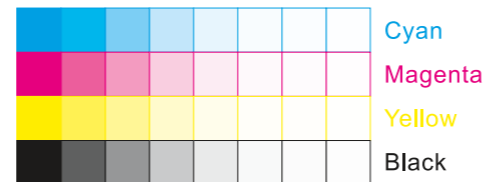
Product Manager:

Engineer:

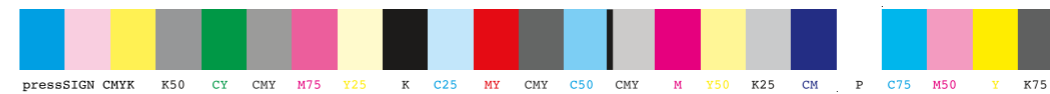
Languages: Languages on Package 1

Dimensions: see die line

Packaging Prints CMYK



pressSIGN CMYK_Colourbar_ISO 12647-2 Coated White Backing v6_labels_below i1Pro Contrast Bars.eps



pressSIGN CMYK_Colourbar_ISO 12647-2 Coated White Backing v6_labels_below.eps



There are two color bars on this proof and in the art file. One to be used with X-rite I1 Pro Spectrophotometer. The other can be used with most other spectrophotometers. Printers must repeat one of the two color bars all the way across the width (gripper edge) of the press sheets on sample runs and production runs. Failure to comply will result in the remaking of film and/or plates at your cost.

数码稿以及设计文件包含了两种色带。一种适用于X-rite (爱色丽) I1 Pro 分光光度计, 另一种适用于其它大部分的分光光度计。在打样或者批量生产时, 印刷厂必须选择其中一种色带并重复添加直到覆盖整张纸的宽度(叼口边)。没有按照上述要求而导致重新出菲林、出版的费用将由印刷厂承担。