

bright starts™ Sit & See Safari Mirror™

Floor Mirror • Espejo de Piso • Miroir au Sol
Bodenspiegel • Lustro Podłogowe • Specchio da Pavimento

OM+

4. Perfect for tummy time!
Parfait pour les jeux à plat ventre!



1. Large baby-safe mirror for self discovery
Grand miroir d'éveil spécial bébés



2. Fun crinkle leaves
Feuilles bruisantes amusantes

3. Folds flat for easy storage
S'aplatit pour faciliter le rangement

bright starts™
Sit & See Safari Mirror™

Floor Mirror • Espejo de Piso
Miroir au Sol



ES 1. Espejo grande de uso seguro para bebés para que el bebé se descubra a sí mismo.
2. Hojas crujientes divertidas
3. Se dobla completamente para guardarlo con facilidad
4. ¡Perfecto para divertirse boca abajo!

DE 1. Großer babysicherer Spiegel zur selbstentdeckung
2. Lustige, knisternde blätter
3. Zur leichten aufbewahrung zusammenklappbar
4. Perfekt zum spielen in der bauchlage!

PL 1. Duże, bezpieczne dla dziecka lustro do odkrywania siebie
2. Zabawne, szeleszczące liście
3. Składa się płasko, ułatwiając przechowywanie
4. Idealne do zabawy na brzuszku!

IT 1. Grande specchio di sicurezza per bambini per aiutarli nella scoperta di sé stessi
2. Divertimento! Foglie ruvide che frusciano
3. Piatto quando è chiuso per essere riposto facilmente
4. Perfetto per giocare a pancia in sotto!

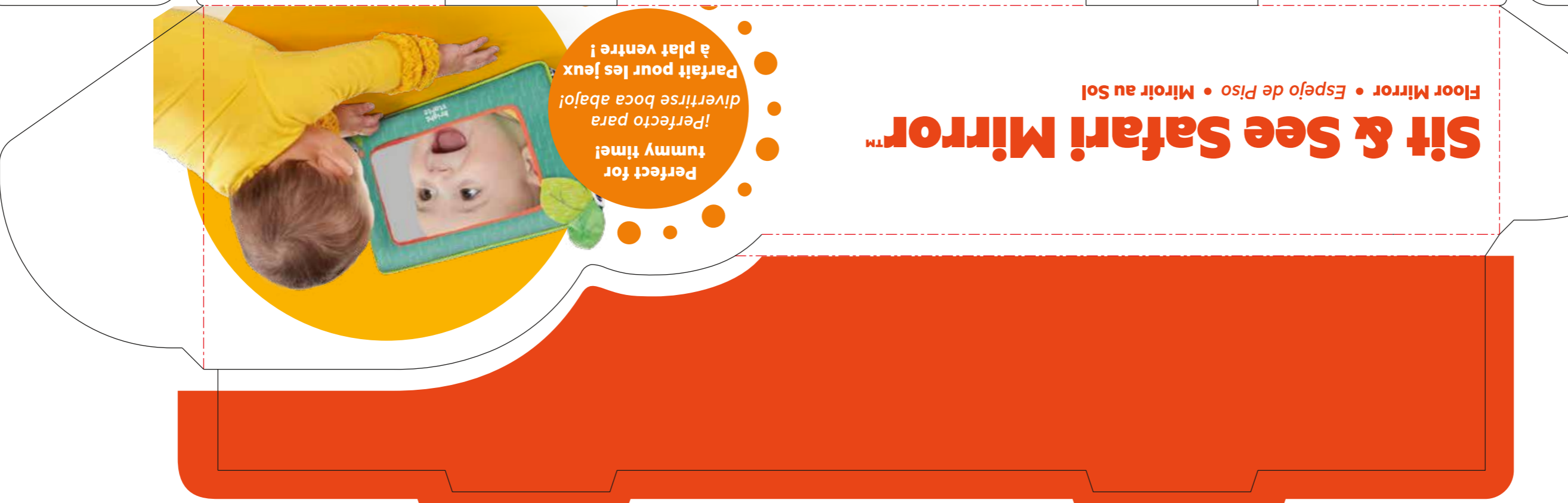
★★★★★
"Lightweight, soft, stands up well, and the mirror is high quality."
—Bright Starts Customer
"Liviano, suave, estable y el espejo es de alta calidad."
—Cliente de Bright Starts.
« Léger, doux, tient bien droit et le miroir est de bonne qualité. »
—Client de Bright Starts

brightstarts.com

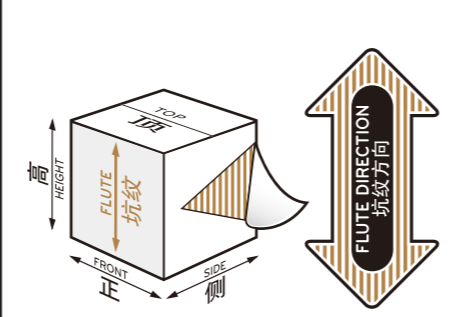
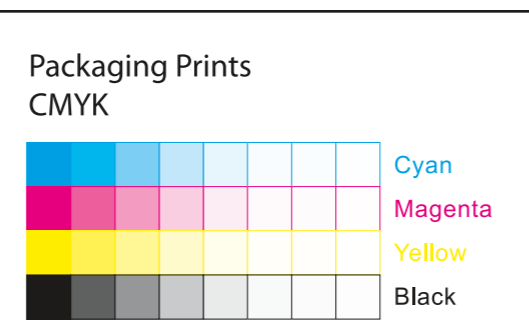
KIDS2, LLC ATLANTA, GA USA 30305 • 1-800-230-8190



RECYCLED
80%
FLOOR MIRROR • ESPEJO DE PISO • MIROIR AU SOL
BODENSPIEGEL • LUSTRO PODŁOGOWE • SPECCHIO DA PAVIMENTO



kids2™
File Name: 52035_WW_PL070924
Brand: Bright Starts
Category: Baby Toy - Box
Product Name: Sit & See Safari Floor Mirror™
Package Designer: Cleshtia Bliss
Product Manager: Kiersten / Mia
Engineer: LEAVE BLANK
Languages: Languages on Package 3/6
Dimensions: XX" w x XX" h x XX" d



There are two color bars on this proof and in the art file. One to be used with X-rite I1 Pro Spectrophotometer. The other can be used with most other spectrophotometers. Printers must repeat one of the two color bars all the way across the width (grripper edge) of the press sheets on sample runs and production runs. Failure to comply will result in the remaking of film and/or plates at your cost. 数码稿以及设计文件包含了两种色带。一种适用于X-rite (爱色丽) I1 Pro 分光光度计, 另一种适用于其它大部分的分光光度计。在打样或者批量生产时, 印刷厂必须选择其中一种色带并重复添加直到覆盖整张纸的宽度(即口边)。没有按照上述要求而导致重新出菲林、出版的费用将由印刷厂承担。