

# FRONT (4x5in)

11311



**Around We Grow™**  
4-in-1 Discovery Center  
Play Tips



**15+**  
Activities



TEACHES



Listening



Animals



Languages



Creativity



Fine Motor

# BACK (4x5in)



### Creature Feature

Meet a few new friends! Point to and name each animal on the piano keys to help introduce baby to the 8 unique animals! Choose Discovery Mode to hear the sounds each creature makes. As baby grows into the toddler years, ask them to name the animals!

### Learn the Lingo

Discover numbers and colors in 4 languages! Select English, French, Spanish, or German on the piano and then press a key to hear color names and numbers in that language! Repeat the words in each language and ask your child to press the corresponding key to reinforce their learning!

### Create Space

Channel your child's inner Picasso! Remove the play panels to reveal the art table. Use paper and crayons to scribble, color, or draw pictures together to help your child tap into their creativity and build fine motor skills. Have fun together drawing a favorite Baby Einstein character, silly faces, or even a self-portrait!

### Feel it Out

A sensory wonderland awaits baby! Detach the play panels and let little eyes, ears, and fingers explore as you sit with baby. Touch the butterfly's wings together, play music with the piano, and watch the rattle beads dance. Invite a friend or sibling to explore too!



Scan to watch these play tips in action!



## 0.3mm Matte White PP



File Name: 11311\_1L\_PTC082025

Brand: Baby Einstein

Category: Home/AWG

Product Name: Around We Grow™

Package Designer: Chelsea A

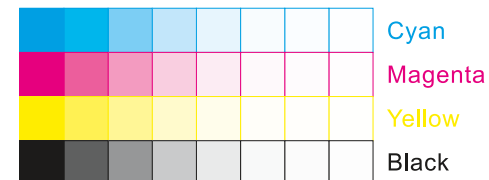
Product Manager:

Engineer:

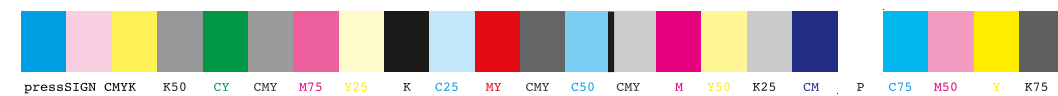
Languages: Languages on Package 1

Dimensions: see die line

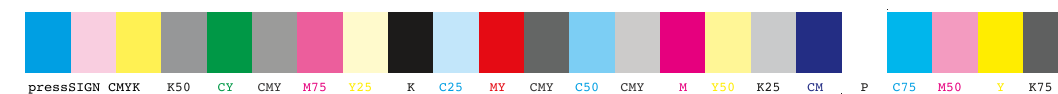
Packaging Prints  
CMYK



pressSIGN CMYK\_Colourbar\_ISO 12647-2 Coated White Backing v6\_labels\_below i1Pro Contrast Bars.eps



pressSIGN CMYK\_Colourbar\_ISO 12647-2 Coated White Backing v6\_labels\_below.eps



There are two color bars on this proof and in the art file. One to be used with X-rite I1 Pro Spectrophotometer. The other can be used with most other spectrophotometers. Printers must repeat one of the two color bars all the way across the width (gripper edge) of the press sheets on sample runs and production runs. Failure to comply will result in the remaking of film and/or plates at your cost.

数码稿以及设计文件包含了两种色带。一种适用于X-rite (爱色丽) I1 Pro 分光光度计, 另一种适用于其它大部分的分光光度计。在打样或者批量生产时, 印刷厂必须选择其中一种色带并重复添加直到覆盖整张纸的宽度(叼口边)。没有按照上述要求而导致重新出菲林、出版的费用将由印刷厂承担。