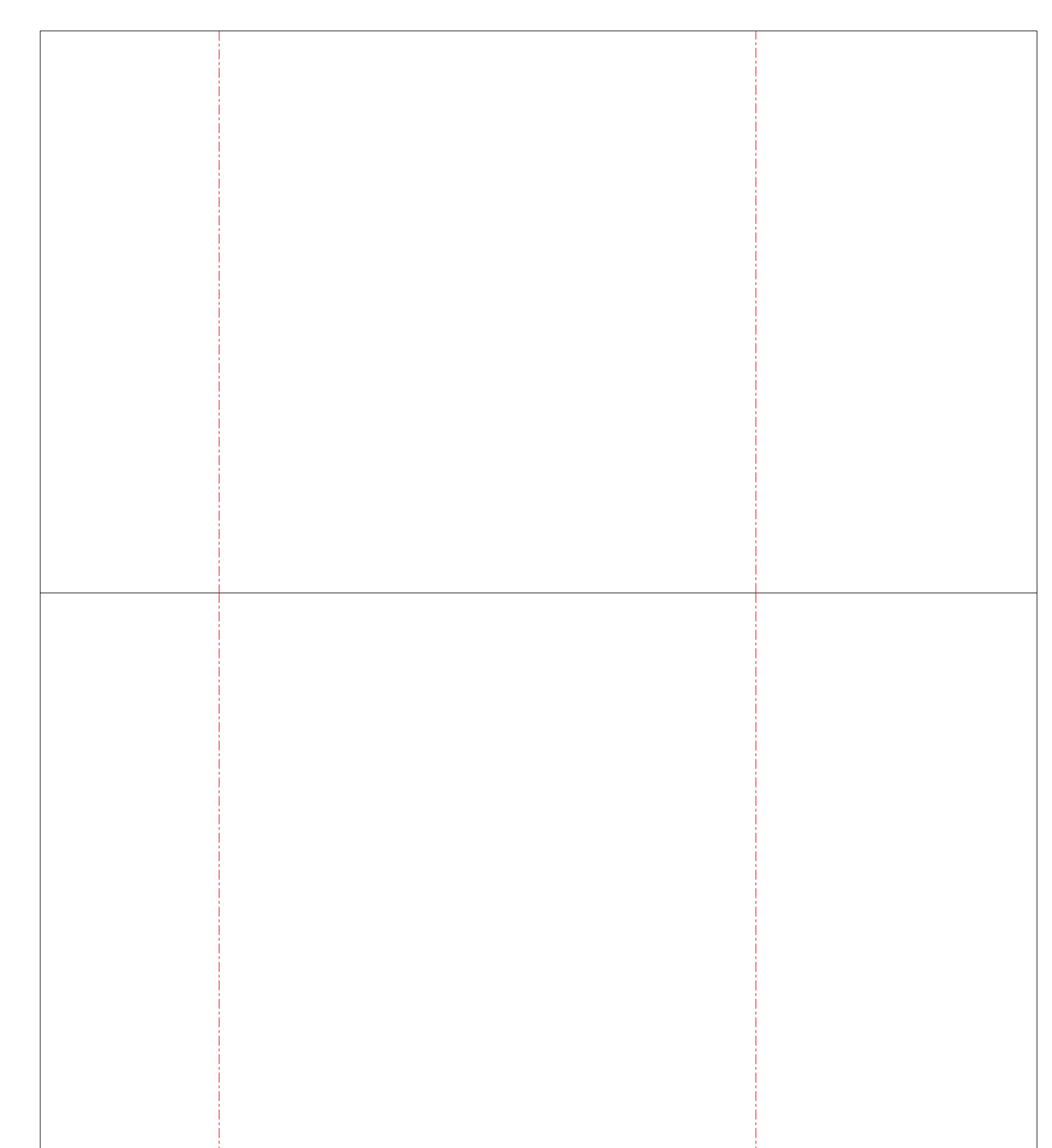
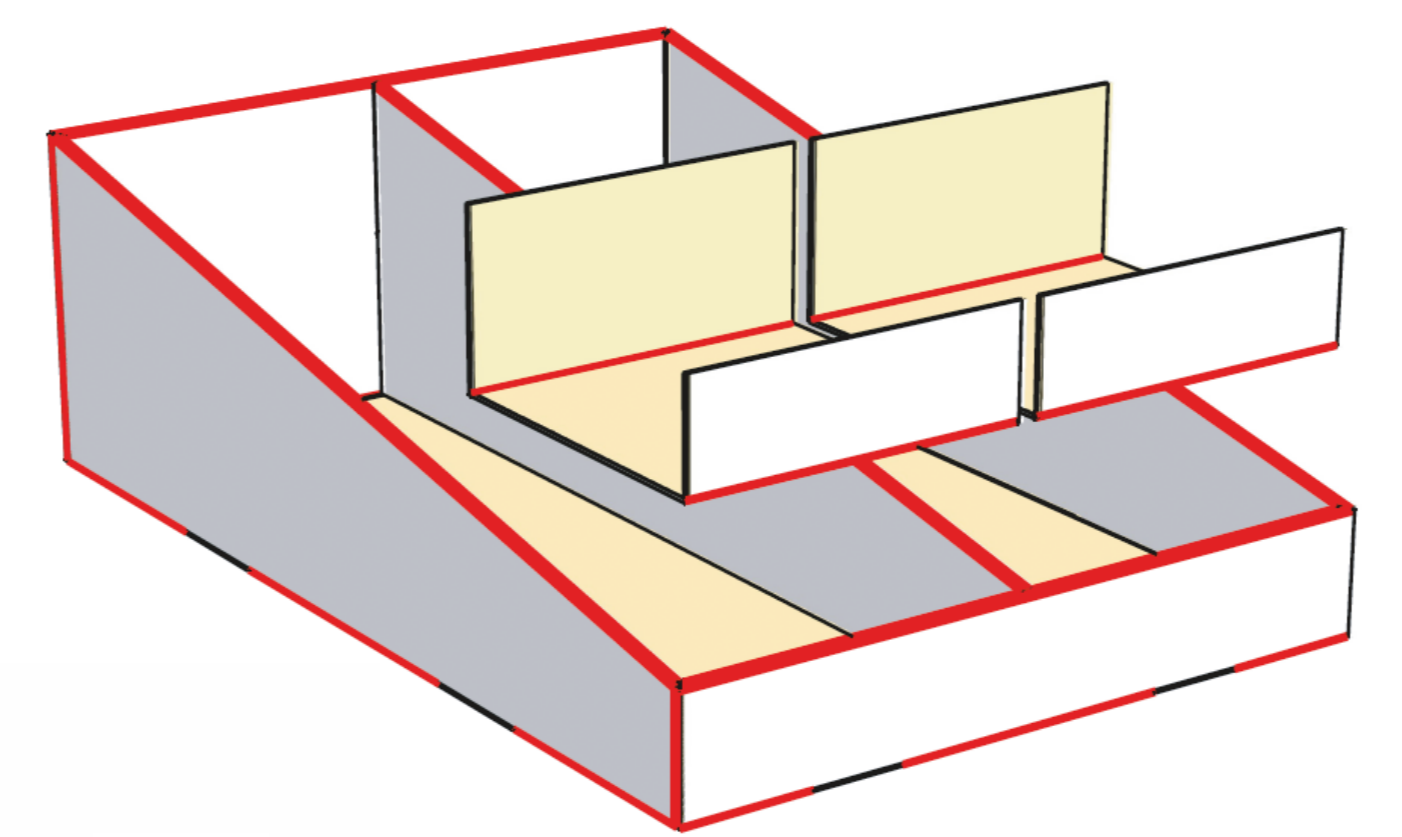


Assortment 12ct
PACKOUT INSTRUCTIONS

FOR FINAL PACKOUT EACH INDIVIDUALLY PACKED ITEM WILL INCLUDE THE ORIGINAL PACKAGING PEG CARD.



kids2
 File Name: 8916_PDO_PL103024
 Brand: Bright Starts
 Category: PDD
 Product Name: Snuggle & Teethe™ Soothing plush
 Package Designer: Nurzen B.
 Product Manager: Enter Name
 Engineer: Enter Name
 Language: Languages on Package 3/7
 Dimensions: see die line

Packaging Prints
 PMS 2028 U
 L* 58.67 a* 62.92 b* 50.69

There are two color bars on this proof and in the art file. One to be used with X-rite D50 Spectrophotometer. The other can be used with most other spectrophotometers. Printers must repeat one of the two color bars all the way across the width (gripper edge) of the press sheets on sample runs and production runs. Failure to comply will result in the remaking of film and/or plates at your cost.
 本印刷品及设计文件包含了两种色标。一种适用于X-rite D50分光光度计，另一种适用于其它大部分的分光光度计。在打样或者批量生产时，印刷厂必须选择将其中一种色标重复添加到需要测量的宽度（刮刀边）。没有按照上述要求操作会导致印刷厂受损。