

FRONT (4x5in)

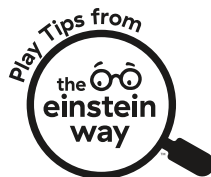
12628



The Einstein Way™
Opus's Ocean of Discovery™
Water Mat Play Tips



6 Floating ocean shapes



TEACHES



Sensory Skills



Fine Motor



Animals



Texture



Cause & Effect

BACK (4x5in)



Get a Leg Up on Learning

Help strengthen those tiny legs! Hold baby standing up over mat and allow them to press their feet on mat. As their feet move the floating fish, encourage baby to look at the fish and watch them flow!

Shore Up Baby's Engagement

Give educational entertainment a seat at the table! Place the mat on a highchair tray or on the table as baby sits in a booster seat. This helps keep baby exploring as they wait for their meal!

Go for the Goal

Inspire baby to go after what they want! Encourage baby to reach for the floating fish shapes. This helps baby develop eye-hand coordination and learn cause-and-effect as they move the shapes with their hands.

Learning Together

Build your bond and learn together! Sit with your baby in your lap and drape the water mat over baby's legs. Put your hands over baby's hands to show them how to move the shapes while you talk about the objects, colors, and movements to build their fine motor skills and vocabulary.



Scan to watch these play tips in action!



0.3mm Matte White PP



File Name: 12628_PTC020326

Brand: Baby Einstein

Category: Gym/Mats

Product Name: Opus' Ocean of Discovery

Package Designer: Chelsea A

Product Manager:

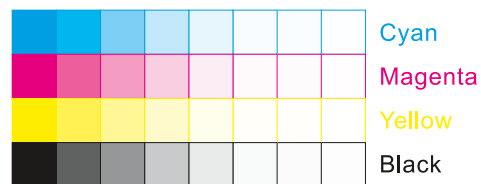
Engineer:

Languages: Languages on Package 1

Dimensions: see die line

Packaging Prints

CMYK



pressSIGN CMYK_Colourbar_ISO 12647-2 Coated White Backing v6_labels_below i1Pro Contrast Bars.eps



pressSIGN CMYK_Colourbar_ISO 12647-2 Coated White Backing v6_labels_below.eps



There are two color bars on this proof and in the art file. One to be used with X-rite I1 Pro Spectrophotometer. The other can be used with most other spectrophotometers. Printers must repeat one of the two color bars all the way across the width (gripper edge) of the press sheets on sample runs and production runs. Failure to comply will result in the remaking of film and/or plates at your cost. 数码稿以及设计文件包含了两种色带。一种适用于X-rite (爱色丽) I1 Pro 分光光度计, 另一种适用于其它大部分的分光光度计。在打样或者批量生产时, 印刷厂必须选择其中一种色带并重复添加直到覆盖整张纸的宽度(叼口边)。没有按照上述要求而导致重新出菲林、出版的费用将由印刷厂承担。