

FRONT (4x5in)

17426-013



The Einstein Way™
On-the-Go Sea Dreams Soother™
Sleep Soother Play Tips

Om+

15+

minutes of melodies,
lights & sounds



TEACHES



Nature



Visual Development



First Words



Music

BACK (4x5in)



A Sea of Calm

Soothe baby from day one with the sounds of the sea! Babies love ocean sounds because they mimic the womb. Use the soother's ocean sounds to help baby feel relaxed and calm – no matter how rough the seas get.

Bright Eyes

Little eyes love to explore! Use the kickstand to place the soother on the floor in front of your baby during tummy time. Watch the sea scene's gentle motions to help support baby's visual development and make tummy time more engaging!

Talk it Out

Play time is a great way to build your bond with baby – and support language development! Point out the soother's colors, shapes and animals. Describe these features to help your baby learn new words!

Wise Choice

Help baby build confidence and make choices for themselves by letting them select which song to play. Ask them to press the starfish to play a favorite song or ocean sound. When you hear their choice, tell them "You did it!"



Scan to watch these
play tips in action!



Use a durable plastic ziptie (not a thin tie) to secure PTC through the peghole insert. Tighten enough that the PTC does not extend past bottom of box



0.3mm Matte White PP



File Name: 17426-013_PTC112425

Brand: Baby Einstein

Category: Baby Toy

Product Name: On the go Sea Dreams Soother™

Package Designer: Chelsea A

Product Manager:

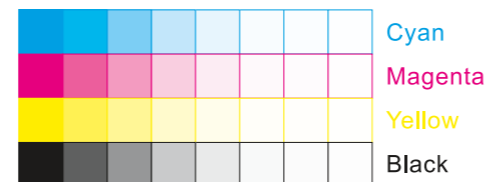
Engineer:

Languages: Languages on Package 1

Dimensions: see die line

Packaging Prints

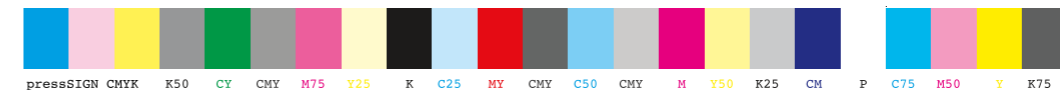
CMYK



pressSIGN CMYK_Colourbar_ISO 12647-2 Coated White Backing v6_labels_below i1Pro Contrast Bars.eps



pressSIGN CMYK_Colourbar_ISO 12647-2 Coated White Backing v6_labels_below.eps



There are two color bars on this proof and in the art file. One to be used with X-rite I1 Pro Spectrophotometer. The other can be used with most other spectrophotometers.

Printers must repeat one of the two color bars all the way across the width (gripper edge) of the press sheets on sample runs and production runs. Failure to comply will result in the remaking of film and/or plates at your cost.

数码稿以及设计文件包含了两种色带。一种适用于X-rite (爱色丽) I1 Pro 分光光度计, 另一种适用于其它大部分的分光光度计。在打样或者批量生产时, 印刷厂必须选择其中一种色带并重复添加直到覆盖整张纸的宽度(叼口边)。没有按照上述要求而导致重新出菲林、出版的费用将由印刷厂承担。