

Protective Cover

(Package of 5)

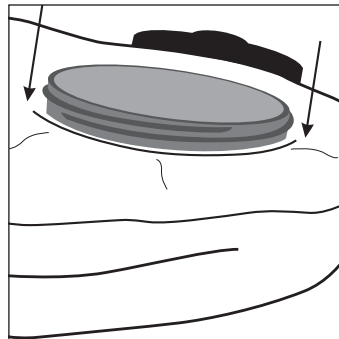
Reorder #	Description
<input type="checkbox"/> 10075799	Clear Cover
<input type="checkbox"/> 10087152	Yellow Cover

For use with the OptimAir® TL Powered Air Purifying Respirator

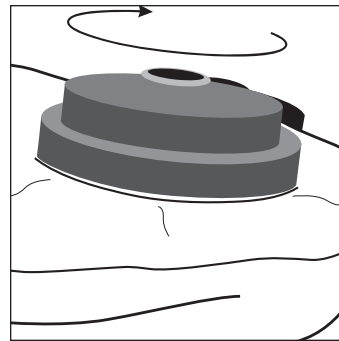
INSTRUCTIONS

1. In a clean area, remove belt and cartridges.
2. Slide protective cover over breathing tube and motor blower unit. (It may be helpful to turn on the motor blower during this step.)

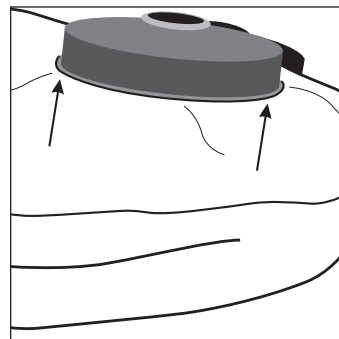
3. Push cover openings over cartridge receptacles.



4. Attach cartridges.



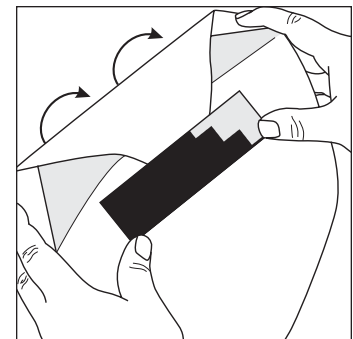
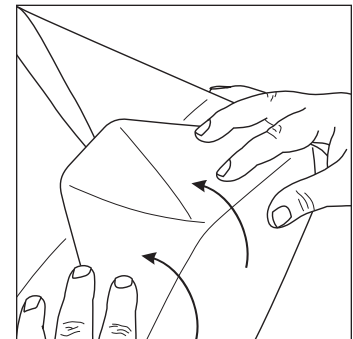
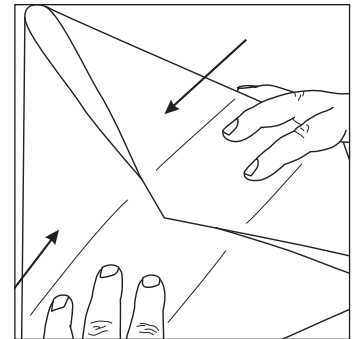
5. Lift edges of protective cover openings over cartridge bases and seal with tape.



⚠ WARNING

DO NOT allow the protective cover, or any object, to interfere with the cartridge o-ring and receptacle sealing surface or an airtight seal will not be achieved. Failure to follow this warning could result in serious personal injury or death.

6. Cut protective cover tube to desired length and seal to breathing tube connector with tape.
7. Replace belt through apertures in cover loops on motor/blower.
8. Lay the unit flat while folding and taping bottom of cover.



For More Information, call 1-800-MSA-2222 or Visit Our Website at www.MSAnet.com



MINE SAFETY APPLIANCES COMPANY
PITTSBURGH, PENNSYLVANIA, U.S.A. 15230