

FRONT (4x5in)

17515



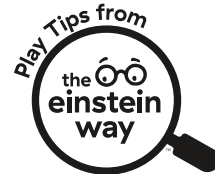
The Einstein Way™
Jump & Learn Barnyard™
2-in-1 Jumper Play Tips



6-36m

2 in 1

Activity jumper and
removable electronic
toy station



TEACHES



Fine Motor



Cause & Effect

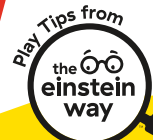


Sensory Skills



Listening™

BACK (4x5in)



Go for a Spin

Reveal something new! Spin the wheel or press the buttons on the barn to encourage baby's cause-and-effect learning. As you spin, describe the lights & sounds the barn makes! Ask baby to spin the wheel to make the magic happen too!

Gear Up for Learning

Shift baby's learning into high gear! Show your baby how to push Donald the Sheep's tractor to create a gear sound. Ask baby to push the tractor to make the sound too! Look for these vehicles as you both watch the Farm Explorers series together!

Special Effects

Help baby learn their actions make big things happen! As baby bounces, the jumper responds with lights and music. Help baby connect their movements to these sensory delights by describing how their actions create amazing reactions!

Plant a Seed

Music, bright colors, animals — there's so much to explore on the farm! Sit with your baby and examine all the sensory delights. Describe the colors and shapes on the flashcards. As baby grows, ask them to name the colors and shapes too!



Scan to watch these
play tips in action!



0.3mm Matte White PP



File Name: 17515_PTC072225

Brand: Baby Einstein

Category: Playgear

Product Name: Jump & Learn Barnyard™

Package Designer: Chelsea A

Product Manager:

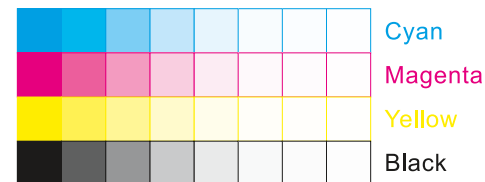
Engineer:

Languages: Languages on Package 1

Dimensions: see die line

Packaging Prints

CMYK



pressSIGN CMYK_Colourbar_ISO 12647-2 Coated White Backing v6_labels_below i1Pro Contrast Bars.eps



pressSIGN CMYK_Colourbar_ISO 12647-2 Coated White Backing v6_labels_below.eps



There are two color bars on this proof and in the art file. One to be used with X-rite I1 Pro Spectrophotometer. The other can be used with most other spectrophotometers.

Printers must repeat one of the two color bars all the way across the width (gripper edge) of the press sheets on sample runs and production runs. Failure to comply will result in the remaking of film and/or plates at your cost.

数码稿以及设计文件包含了两种色带。一种适用于X-rite (爱色丽) I1 Pro 分光光度计, 另一种适用于其它大部分的分光光度计。在打样或者批量生产时, 印刷厂必须选择其中一种色带并重复添加直到覆盖整张纸的宽度(叼口边)。没有按照上述要求而导致重新出菲林、出版的费用将由印刷厂承担。