

FRONT (4x5in)

18080



The Einstein Way™ See Me, Teach Me™ Tummy Time Mirror & High Contrast Cards Play Tips



4 High contrast cards

Look, flip, engage, & explore!



TEACHES



BACK (4x5in)



Sensory Delights

Explore the senses! Encourage your child's curiosity as they explore the mirror and flashcards. Feel the sensory sun, look at the colorful nature images on the flashcards, and listen to the leaf as it crinkles at baby's touch. Reinforce baby's learning by identifying these sensory sights in the backyard too!

Playful Peekaboo

Babies love faces! During seated floor play, show your baby their reflection in the mirror and say "Who's in the mirror?" Then say "You are!" Hide the mirror behind your back and ask baby to crawl to find it! Say, "There you are! You found the mirror!"

Creative Counting

Introduce colors in a flash! Use the flashcards to introduce baby to colors, shapes, and early math skills. Point to each color and say its name aloud for baby. Then count the objects and shapes on each card. Find objects in the same colors around your house. Bonus points if you count those together too!

Turn Some Heads

Support baby's visual tracking and strengthen their neck and back muscles! During tummy time, catch baby's eye with the black and white patterned flashcards. Move the cards right to left and left to right to encourage baby to turn to see the graphics! Switch to the cards' colorful sides as baby's vision develops!



Scan to watch these play tips in action!

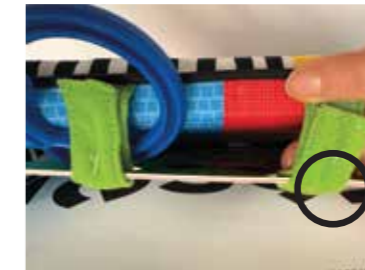


Packout



Ziptie

* Use fabric loops on bottom of product to ziptie to bottom of insert



x2 Swifftack in each strap to reinforce and protect cards from theft.

Attach PTC to same ziptie used to secure c-link and tuck PTC behind product

0.3mm Matte White PP



File Name: 18080_PTC112525

Brand: Baby Einstein

Category: Baby Box

Product Name: See Me, Teach Me™ Tummy Time Mirror & High Contrast Cards

Package Designer: Chelsea A

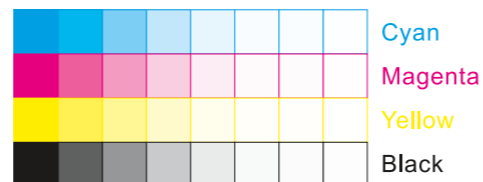
Product Manager:

Engineer:

Languages: Languages on Package 1

Dimensions: see die line

Packaging Prints
CMYK



pressSIGN CMYK_Colourbar_ISO 12647-2 Coated White Backing v6_labels_below i1Pro Contrast Bars.eps



pressSIGN CMYK_Colourbar_ISO 12647-2 Coated White Backing v6_labels_below.eps



There are two color bars on this proof and in the art file. One to be used with X-rite I1 Pro Spectrophotometer. The other can be used with most other spectrophotometers. Printers must repeat one of the two color bars all the way across the width (gripper edge) of the press sheets on sample runs and production runs. Failure to comply will result in the remaking of film and/or plates at your cost.

数码稿以及设计文件包含了两种色带。一种适用于X-rite (爱色丽) I1 Pro 分光光度计, 另一种适用于其它大部分的分光光度计。在打样或者批量生产时, 印刷厂必须选择其中一种色带并重复添加直到覆盖整张纸的宽度(叼口边)。没有按照上述要求而导致重新出菲林、出版的费用将由印刷厂承担。