

# FRONT (4x5in)



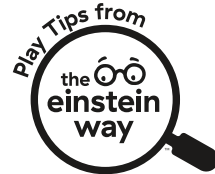
12926

## The Einstein Way™ Neptune's Kick & Explore™ Musical Kick Pad and Crib Toy Play Tips



**0-24m**

**3** Modes of fun:  
Melody, Discovery,  
& Piano



### TEACHES



Colors



Shapes



Music



Cause & Effect



Tummy Time

# BACK (4x5in)



### Floor Play Forte

Support core strength through musical floor play! Encourage baby to make music with their hands while in tummy time, seated on the floor with the mat in front of them, or as they recline and kick the pad in their crib. This builds strength through tummy, back, neck, legs, and shoulders.

### Tune in Together

Inspire cause and effect learning! Get on baby's level and show baby how to make music with the kick pad. Then, when baby kicks the pad to make a sound, clap and say "You did that! Do it again!"

### Show on the Road

Give language learning a seat at the table! Place the mat on a high chair tray at home or when dining out to keep baby entertained and build their patience. Talk about the characters and music on the pad to encourage language learning too!

### Colorful Discoveries

Help baby discover shapes, numbers and colors! As baby presses each piano key, repeat the number, shape or color name to reinforce their learning. Ask baby to play number 3 or play the green triangle — you might be surprised at how quickly they learn!



Scan to watch these  
play tips in action!



## 0.3mm Matte White PP



File Name: 12926\_PTC052625

Brand: Baby Einstein

Category: BBOX

Product Name: Neptune's Kick & Explore™

Package Designer: Chelsea A

Product Manager:

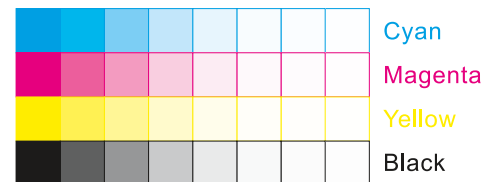
Engineer:

Languages: Languages on Package 1

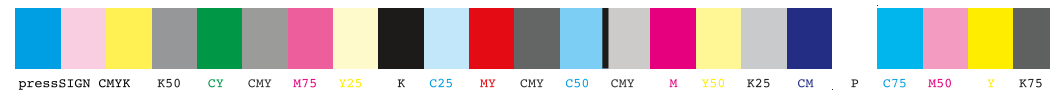
Dimensions: see die line

### Packaging Prints

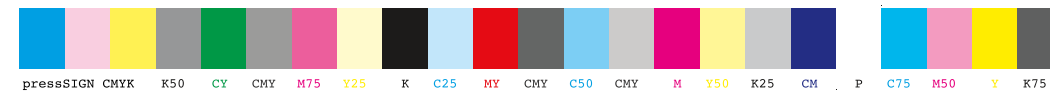
CMYK



pressSIGN CMYK\_Colourbar\_ISO 12647-2 Coated White Backing v6\_labels\_below i1Pro Contrast Bars.eps



pressSIGN CMYK\_Colourbar\_ISO 12647-2 Coated White Backing v6\_labels\_below.eps



There are two color bars on this proof and in the art file. One to be used with X-rite I1 Pro Spectrophotometer. The other can be used with most other spectrophotometers. Printers must repeat one of the two color bars all the way across the width (gripper edge) of the press sheets on sample runs and production runs. Failure to comply will result in the remaking of film and/or plates at your cost.

数码稿以及设计文件包含了两种色带。一种适用于X-rite (爱色丽) I1 Pro 分光光度计, 另一种适用于其它大部分的分光光度计。在打样或者批量生产时, 印刷厂必须选择其中一种色带并重复添加直到覆盖整张纸的宽度(叼口边)。没有按照上述要求而导致重新出菲林、出版的费用将由印刷厂承担。