

FRONT (4x5in)

17327



The Einstein Way™ Busy Barnyard™ Grow-with-Me Activity Gym Play Tips



0m+
30+
Engaging sounds
& melodies



TEACHES



BACK (4x5in)



Sort It Out

Discover shapes! Use the 3D barn to make shape learning engaging for baby. Show baby how to match the triangle, circle, and square to the shape sorter on the barn. Name each shape. As baby grows, ask them to find each shape and sort it!

On the Road

Keep motor skills development on track! Sit at the edge of the mat and show your toddler how to drive the tractor along the road map. Make car sounds to help it come to life. Then ask your child to do the same! Praise their efforts to drive the tractor along the track!

Sensational Sights

There is so much to explore on the farm! Use the toys, mat, and tractor to engage baby's senses. Make the tractor play music and feel the plush Cal toy. Count the vegetables and animals to teach baby numbers as you visit different parts of the farm together!

Learning Lift

Help your little farmer meet some barnyard pals! As baby lays or sits on the mat, show them how to lift the flaps on the barn to find a farm animal! Name each animal. As baby grows, ask them to match these animals and shapes to those on the blocks too!



Scan to watch these
play tips in action!



0.3mm Matte White PP



File Name: 17327_1L_PTC110625

Brand: Baby Einstein

Category: Play gym

Product Name: Busy Barnyard™

Package Designer: Chelsea A

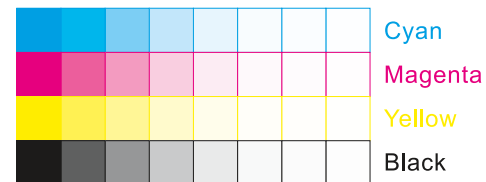
Product Manager:

Engineer:

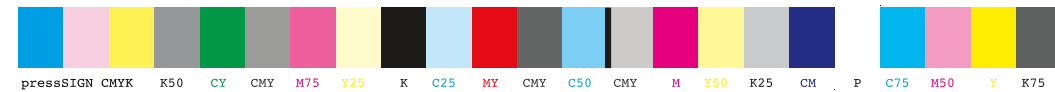
Languages: Languages on Package 1

Dimensions: see die line

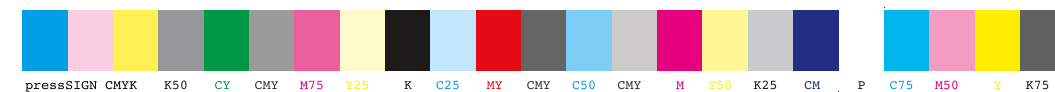
Packaging Prints CMYK



pressSIGN CMYK_Colourbar_ISO 12647-2 Coated White Backing v6_labels_below i1Pro Contrast Bars.eps



pressSIGN CMYK_Colourbar_ISO 12647-2 Coated White Backing v6_labels_below.eps



There are two color bars on this proof and in the art file. One to be used with X-rite I1 Pro Spectrophotometer. The other can be used with most other spectrophotometers. Printers must repeat one of the two color bars all the way across the width (grripper edge) of the press sheets on sample runs and production runs. Failure to comply will result in the remaking of film and/or plates at your cost.

数码稿以及设计文件包含了两种色带。一种适用于X-rite (爱色丽) I1 Pro 分光光度计, 另一种适用于其它大部分的分光光度计。在打样或者批量生产时, 印刷厂必须选择其中一种色带并重复添加直到覆盖整张纸的宽度(叼口边)。没有按照上述要求而导致重新出菲林、出版的费用将由印刷厂承担。