



Specification Features

- SINGLE SWING SHOWER DOOR
- MODERN STYLISH FRAMELESS DESIGN
- SELF-CLOSING, SOLID BRASS PIVOTS FOR ADDED CONVENIENCE
- 2 CONVENIENT GLASS SHELVES FOR STORAGE AND STABILITY
- UP TO 1 IN. ADJUSTMENT FOR WIDTH OR OUT-OF-PLUMB
- 3/8 IN. (10MM) THICK CERTIFIED TEMPERED GLASS
- CLEARMAX WATER REPELLANT , STAIN RESISTANT COATING
- REVERSIBLE FOR RIGHT OR LEFT DOOR INSTALLATION




Technical Information

- Model: Elegance
- Door Type: Pivot Shower Door
- Dimensions: 54 3/4"W x 72"H
- Product Width Max: 54 3/4"
- Product Width Min: 52 3/4"
- Access Width Max: 21 1/4"
- Access Width Min: 21 1/4"
- Access Height Max: --
- Threshold Width Min: 1 1/2"
- Glass Thickness: 3/8" [10 mm]
- Glass Type: Clear
- Glass Coating: ClearMax

Codes/Standards Applicable

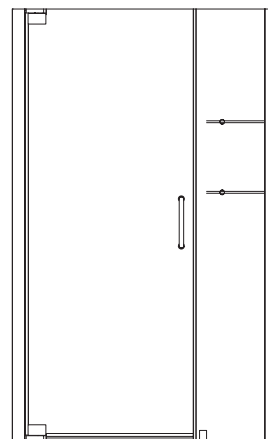
- ANSI Z97.1 (Tempered Glass)
- 16 CFR Part 1201

Hardware Options:

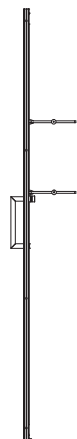
-  01 - Chrome
-  04 - Brushed Nickel
-  06 - Oil Rubbed Bronze

Model SKU#s:

- SHDR-4152720-01
- SHDR-4152720-04
- SHDR-4152720-06

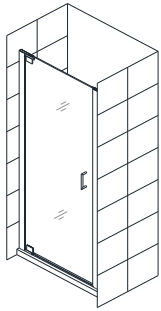


Front View



Side View

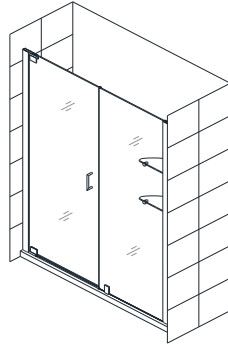
Available Product Configurations:



Single Shower Door

Model #s:

SHDR-4125720-XX
SHDR-4127720-XX
SHDR-4128720-XX
SHDR-4130720-XX
SHDR-4132720-XX
SHDR-4134720-XX
SHDR-4135720-XX



Swing Shower Door and Fixed Panel
2 glass shelves included

Model #s:

SHDR-4137720-XX SHDR-4149720-XX
SHDR-4139720-XX SHDR-4151720-XX
SHDR-4140720-XX SHDR-4152720-XX
SHDR-4142720-XX SHDR-4154720-XX
SHDR-4144720-XX SHDR-4156720-XX
SHDR-4146720-XX SHDR-4158720-XX
SHDR-4147720-XX SHDR-4159720-XX

Important Notes:

IMPORTANT! Before making your shower door selection, make sure walls are finished with tile or other materials, for proper measurements.

Install this product according to the installation manual. Professional installation is recommended.

This door is reversible. The inside door glass can be installed on either side of the shower.

Minimum threshold depth of 1 1/2 in. is required for proper installation.

Anodized aluminum wall profiles allow up to 1 in. adjustment for width or out-of-plumb (uneven walls).

DO NOT attach the handle to the door glass until instructed in the installation manual. DO NOT use the Handle to lift the glass during installation. This may result in damage to the glass and/or serious injury.

Important Disclaimers:

- Prior to installation, please ensure that the installation surface is finished, level and solid and will be able to support the total weight of the unit. Also, make sure that the walls are plumb. Irregular installation, surface level or out of square conditions can result in serious problems for your installation.
- Please read Installation Manual thoroughly prior to installing this product.
- Please note that you should consult your local building codes with questions on installation compliance standards. Building and plumbing codes may vary by location, and DreamLine® is not responsible for code compliance standards for your project and will not accept any returns.

For commercial customers, we strongly recommend the use of Dreamline's Onsite Contractor Support option.

Dreamline's commercial warranty does not apply to damage or losses resulting from (i) other than normal and proper use and normal service conditions; (ii) improper installation, (iii) installation in or upon an unsuitable surface or areas; (iv) abuse, (v) accident, (vi) alteration, (vii) misuse, (viii) neglect, (ix) unauthorized repair or the failure to utilize suitably qualified and trained persons to perform service and/or repair of the Product, (x) improper maintenance, (xi) failure to follow installation, operating, cleaning or maintenance instructions, and (xii) use of "non-authorized" parts.