

ingenuity™

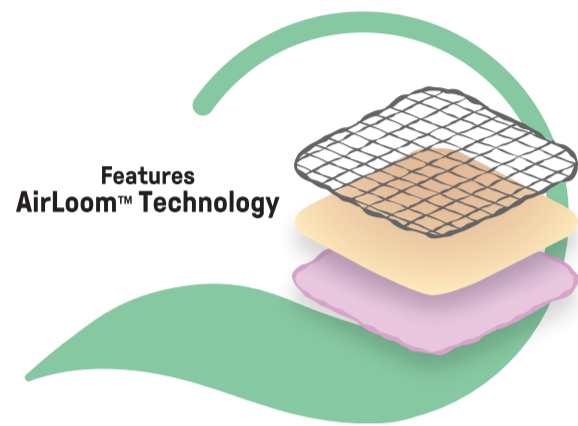
Dream & Grow Bedside Bassinet™ - Handstitch™ 0-12M



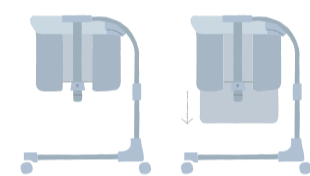
Bedside Bassinet keeps baby safe by your side from day one



Transitions to crib mode for continued use through 12 months



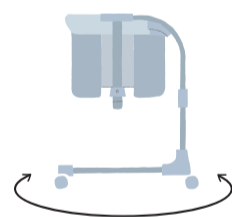
Features
AirLoom™ Technology



2 stages of use for
baby's full first year:
bassinet and crib
alternative



Soothing sounds help
lull baby and soft light
for nighttime check-ins



Easy portability &
maneuverability

ingenuity™

Dream & Grow Bedside Bassinet™ - Handstitch™ 0-12M



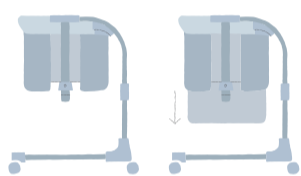
El moisés de colecho mantiene al bebé seguro a tu lado desde el primer día



Transición al modo cuna para continuar usándolo hasta los 12 meses



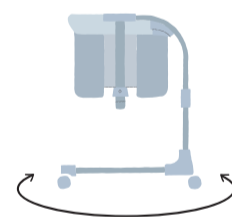
Incorpora la
Tecnología AirLoom™



2 etapas de uso para
todo el primer año del
bebé: moisés y una
alternativa a la cuna



Sonidos relajantes
para arrullar al bebé y
luz tenue que permite
revisarlo en la noche



Fácil de transportar
y maniobrar

Nurtures Healthy Sleep Thru Baby's First Year

Fomenta un Sueño Saludable durante el
Primer Año de Vida del Bebé

kids™

File Name: 26032_ST_PRIPOP091523r3.ai

Brand: Ingenuity

Category: Bassinet

Product Name: Dream & Grow Bedside Bassinet™ - Handstitch™

Package Designer: Jimmy Li

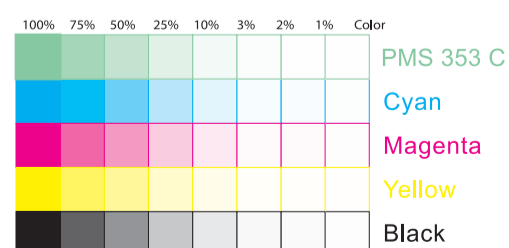
Product Manager: XXXXXXXX

Engineer: XXXXXXXX

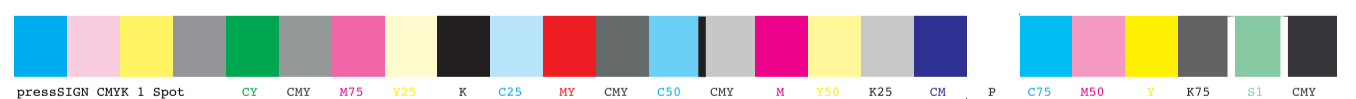
Languages: Languages on POP 3/6

Dimensions: 7.25"W x 11"H

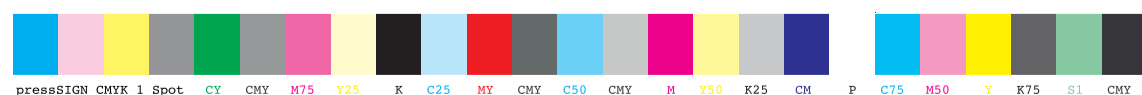
Packaging Prints
PMS 353 C plus CMYK
L*81.64 a*-39.47 b*14.56



pressSIGN CMYK 1 Spot_Colourbar_ISO 12647-2 Coated White Backing v6_labels_below i1Pro Contrast Bars.eps



pressSIGN CMYK 1 Spot_Colourbar_ISO 12647-2 Coated White Backing v6_labels_below.eps



There are two color bars on this proof and in the art file. One to be used with X-rite I1 Pro Spectrophotometer. The other can be used with most other spectrophotometers. Printers must repeat one of the two color bars all the way across the width (gripper edge) of the press sheets on sample runs and production runs. Failure to comply will result in the remaking of film and/or plates at your cost. 数码稿以及设计文件包含了两种色带。一种适用于X-rite (爱色丽) I1 Pro 分光光度计, 另一种适用于其它大部分的分光光度计。在打样或者批量生产时, 印刷厂必须选择其中一种色带并重复添加直到覆盖整张纸的宽度(叼口边)。没有按照上述要求而导致重新出菲林、出版的费用将由印刷厂承担。