



MSA Latchways® Personal Rescue Device (PRD®)

Integrated harness system for self-rescue



WE KNOW WHAT'S AT STAKE.



MSA Latchways Personal Rescue Device (PRD)[®]

MSA has revolutionized the rescue process with the development of the Latchways PRD—an integrated harness system allowing self-rescue. The lightweight, unobtrusive rescue device is contained in a small “backpack” attached to a full body harness and is designed to be used in conjunction with a fall protection system or anchor point.

In the event of a fall the Latchways PRD harness suspends the user and then allows a gentle lowering to the ground in a controlled descent. The device features a 65 ft. (20 m) spool of Aramid rope which is released at a controlled rate through an integral braking mechanism. The innovative design uses quality components and a limited number of moving parts to enable 100% mechanical integrity.

The Need for a Rescue Plan

There is a legal obligation to have a full and comprehensive rescue plan in place when individuals are working at height. OSHA standards require employers to make specific provisions for emergency planning.

An example of this is 1956.502(d)(20) *Fall protection systems criteria and practices* which states, “The employer shall provide for prompt rescue of employees in the event of a fall or shall assure that employees are able to rescue themselves.”

Minimal Training and Fast Rescue

User Training

Unlike all other rescue kits, no specialist training is required as the Latchways PRD is worn in place of a standard full body harness and activation is achieved by simply pulling the release cord.

Pre-use Checks

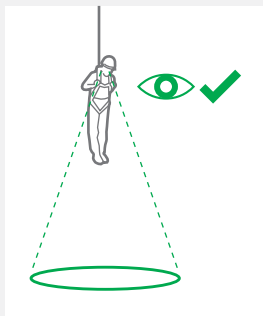
The Latchways PRD has been designed to be user-friendly so pre-use checks are minimal. The descent device, harness and backpack should be checked for any signs of:

- use (a descent has been performed)
- damage
- corrosion
- chemical attack

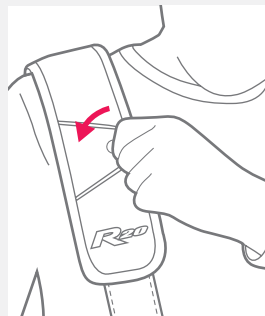
Periodic examination is required at least annually or more frequently to adhere with corporate PPE inspection schedules.



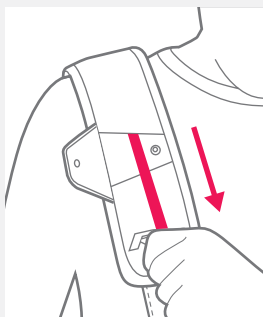
User Instructions



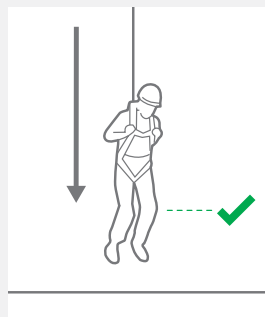
- 1 Check the ground below to ensure descent path is clear and a safe landing is possible.



- 2 Open the flap on the right shoulder strap to access the release cord.



- 3 Pull sharply on the release cord.



- 4 Prepare for landing by bending knees

Key Facts

Descent Height 65 ft. (20 m)

Complete Weight 7.9 lbs. (3.6 kg)
[2.2 lbs. (1 kg) harness/
5.7 lbs. (2.6 kg) rescue device]

User Weight 130–310 lbs. (59–140 kg)

Descent Speed 4.1 ft. (1.25 m) per second

Secondary Release Mechanism Should the user not be able to rescue themselves, the device can be activated by a third party

Component Parts Descent line made from Aramid rope (UHMwPE rope with Aramid overbraid)

Training Minimal user training required—no annual user refresher training required

Maintenance Periodic examination limited to a series of visual inspections carried out by a competent person (full instructions provided)

Standards

The MSA Latchways PRD consists of a full-body harness and integral descender device that conforms to all required standards.

The harness conforms to:

- ANSI Z359.11:2014
- CSA Z259.10-12

The descender device conforms to:

- ANSI Z359.4:2013
- CSA Z259.2.3-12

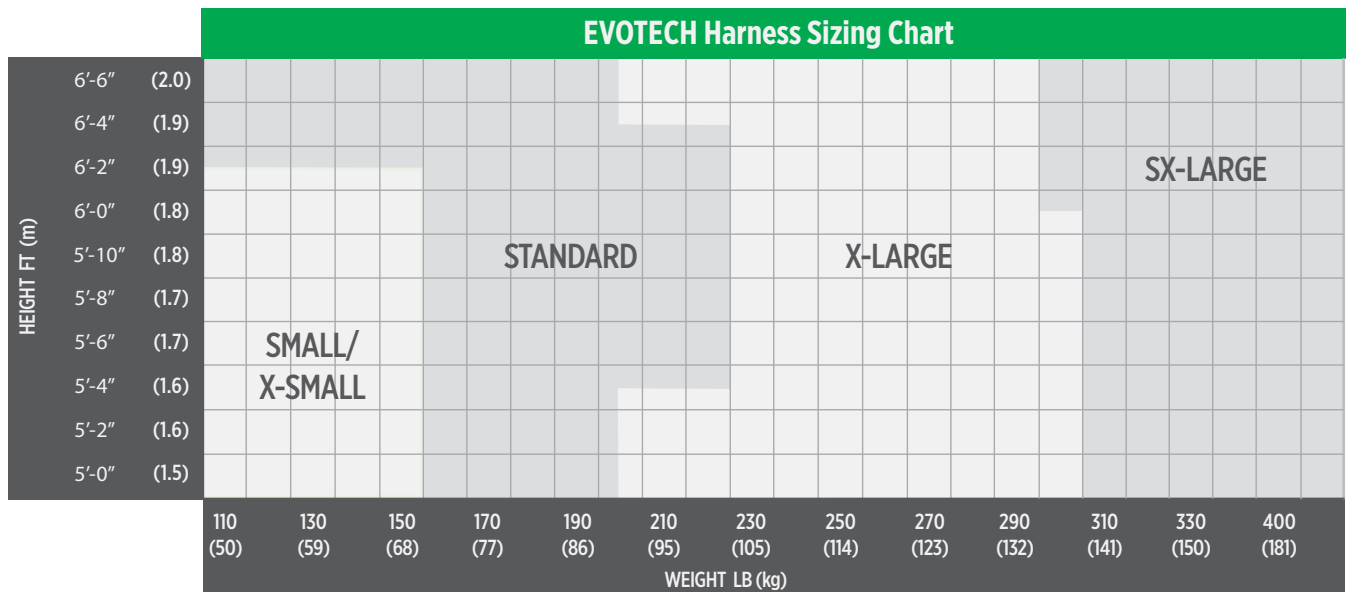
The backpack and harness are:

- Waterproof and dustproof IP56 (Ingress Protection)
- -40° F to +140° F (-40° C to +60° C) Operating temperature
- Successfully assessed against ATEX category Ex II 2 G c IIC T3.

Ordering Information

PRD	Harness Type	Size		Line Length	Standards		
		MSA Part No.	EVOTECH		STD	XLG	ANSI Z359
10176307	■	■		65 ft.	■	■	■
10176308	■		■	65 ft.	■	■	■

EVOTECH® Full-Body Harness Sizing Guide



MSA Latchways Personal Rescue Device (PRD)

Ease of Use

The PRD's patented components have been designed to fit neatly into the 'backpack' to ensure the worker can safely go about their daily work. The backpack zips onto the harness so that it becomes part of everyday wear for those who work at height. The harness is lightweight and unobtrusive but also robust, ensuring it can withstand the rigours of the harshest working environments.



Rescue Benefits

- Significantly reduces rescue time
- Always available
- Self-activated
- Intuitive use
- Clear rescue plan
- Improves user safety



Rescue Pole

The Latchways Rescue Pole is designed to be used by a third party. Should the user be unable to conduct a self-rescue, the third party can activate the Latchways PRD's built-in secondary descent release mechanism. The overall length of the pole is 2.7 ft. (800 mm) when retracted and 11.1 ft. (3400 mm) when extended.





Our Mission

MSA's mission is to see to it that men and women may work in safety and that they, their families, and their communities may live in health throughout the world.

MSA: WE KNOW WHAT'S AT STAKE.

Note: This Bulletin contains only a general description of the products shown. While product uses and performance capabilities are generally described, the products shall not, under any circumstances, be used by untrained or unqualified individuals. The products shall not be used until the product instructions/user manual, which contains detailed information concerning the proper use and care of the products, including any warnings or cautions, have been thoroughly read and understood. Specifications are subject to change without prior notice. MSA is a registered trademark of MSA Technology, LLC in the US, Europe, and other Countries. For all other trademarks visit <https://us.msasafety.com/Trademarks>.

MSA operates in over 40 countries worldwide. To find an MSA office near you, please visit **[MSAsafety.com/offices](https://us.msasafety.com/offices)**.