

BEST IF USED BY



**2 GRAMS SUGAR**

PER SERVING

- ♥ DAIRY FREE
- ♥ SOY FREE
- ♥ GLUTEN FREE
- ♥ CARRAGEENAN FREE
- ♥ CHOLESTEROL FREE

**Nutrition Facts**

64 Servings Per Container  
Serving Size 1 tbsp (15mL)

Amount Per Serving  
**Calories 15**

	% Daily Value*
Total Fat 0.5g	1%
Saturated Fat 0g	0%
Trans Fat 0g	
Cholesterol 0mg	0%
Sodium 10mg	0%
Total Carbohydrate 3g	1%
Dietary Fiber 0g	0%
Total Sugars 2g	
Includes 2g Added Sugars	4%
Protein 0g	
Vitamin D 0mcg	0%
Calcium 30mg	2%
Iron 0.1mg	0%
Potassium 30mg	0%

REFRIGERATE AFTER OPENING.  
DO NOT FREEZE.  
SHAKE WELL FOR BEST TASTE.  
FLASH PASTEURIZED.  
CONSUME WITHIN 7-10 DAYS  
AFTER OPENING.



GLUTEN FREE



CARRAGEENAN FREE



VEGAN



KOSHER



NON GMO Project VERIFIED  
nongmoproject.org

**INGREDIENTS:** ALMONDMILK (WATER, ALMONDS), CANE SUGAR, COCONUT CREAM, ALKALIZED COCOA POWDER, NATURAL FLAVORS, SUNFLOWER LECITHIN, CALCIUM CARBONATE, SEA SALT, POTASSIUM CITRATE, LOCUST BEAN GUM, GELLAN GUM, PEPPERMINT OIL.

**ALLERGEN STATEMENT:**  
CONTAINS ALMONDS, COCONUT.

MANUFACTURED IN A FACILITY THAT PROCESSES OTHER TREE NUTS.

DISTRIBUTED BY CALIFIA FARMS LLC  
BAKERSFIELD, CA 93308



PLEASE RECYCLE



Experience More at  
CALIFIAFARMS.COM

DRINK REMARKABLY



*Stir your Senses*

**CHEER UP Your Cup.**

Luscious ALMONDMILK AND COCONUT CREAM, swirled with REAL cocoa and peppermint.

It's PLANT-BASED perfection that treats *you and your coffee kindly.*

No guilt and no nonsense, just one DELICIOUSLY decadent cup after another.



*One perfect cup after another.*

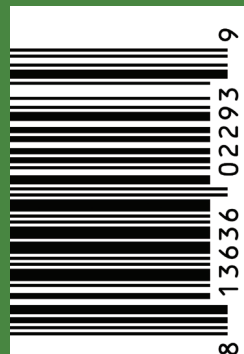
CRAVE Your Coffee AND Savor the Season



HONOR YOUR MORNING with something *special*, made from rich ALMOND AND COCONUT CREAM with a dash of *holiday cheer.*

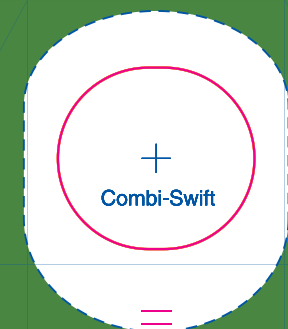
RICH PEPPERMINT, SEDUCTIVE COCOA.

*Anything but ordinary.*



8 13636 02293 9

420525 (03/2021)



Almondmilk Creamer

PEPPERMINT MOCHA

**2 GRAMS SUGAR**  
PER SERVING



ALMONDMILK CREAMER

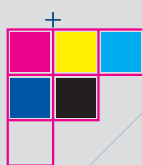
with Coconut Dairy Free



Peppermint Mocha



32 FL OZ (1 QT) 946 mL



0 000 000



combifit

