

# FRONT (4x5in)

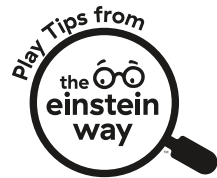
17559



The Einstein Way™  
Cal's Sensory Barn™ Water Mat  
Play Tips



**6** Floating farm shapes



TEACHES



# BACK (4x5in)



**Push Play**  
Push, press, & grow! Tell your child to push the floating objects with their finger to move them up, down, or from one side of the mat to the other. This helps little explorers build fine motor skills and discover cause-and-effect!

**Feel It Out**  
Help baby get a feel for sensory learning! Encourage your child to explore the textures they experience as they play. Describe the way each floating object feels, and how the water swishes with each press!

**Visual Learner**  
Support baby's visual development! Point to each of the floating objects and images on the mat. Talk about the colors you see and push the floating objects through the water. Tell baby to watch each shape as it moves!

**Plant a Seed**  
Explore the barnyard together! Point to and name the chicken, duck, goat, and flower to teach baby first words. As baby grows, name each object and ask baby to move that shape to the barn door!



Scan to watch these play tips in action!

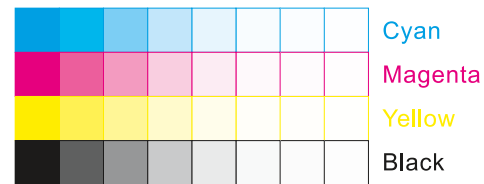


## 0.3mm Matte White PP

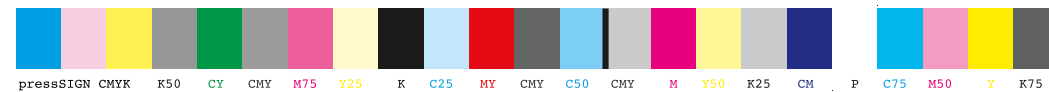


**File Name:** 17559\_PTC020226  
**Brand:** Baby Einstein  
**Category:** Gym/Mats  
**Product Name:** Cals Sensory Barn  
**Package Designer:** Chelsea A  
**Product Manager:**  
**Engineer:**  
**Languages:** Languages on Package 1  
**Dimensions:** see die line

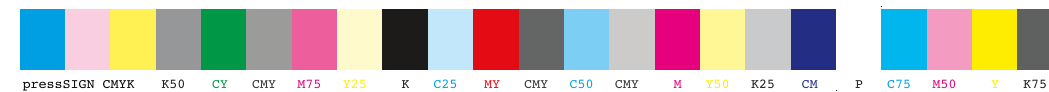
Packaging Prints  
CMYK



pressSIGN CMYK\_Colourbar\_ISO 12647-2 Coated White Backing v6\_labels\_below i1Pro Contrast Bars.eps



pressSIGN CMYK\_Colourbar\_ISO 12647-2 Coated White Backing v6\_labels\_below.eps



There are two color bars on this proof and in the art file. One to be used with X-rite I1 Pro Spectrophotometer. The other can be used with most other spectrophotometers. Printers must repeat one of the two color bars all the way across the width (gripper edge) of the press sheets on sample runs and production runs. Failure to comply will result in the remaking of film and/or plates at your cost. 数码稿以及设计文件包含了两种色带。一种适用于X-rite (爱色丽) I1 Pro 分光光度计, 另一种适用于其它大部分的分光光度计。在打样或者批量生产时, 印刷厂必须选择其中一种色带并重复添加直到覆盖整张纸的宽度(叼口边)。没有按照上述要求而导致重新出菲林、出版的费用将由印刷厂承担。