

# FRONT (4x5in)

17428



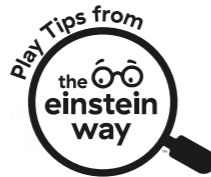
The Einstein Way™  
Sea Dreams Soother™ Sleep Soother  
Play Tips



Om+

25+

minutes of melodies,  
lights & sounds



TEACHES



Colors



Music



Cause & Effect



Visual Development

# BACK (4x5in)



### A Sea of Calm

Soothe baby from day one with the sounds of the sea! Babies love ocean sounds because they mimic the womb. Use the soother's ocean sounds function to help baby feel relaxed and calm – no matter how rough the seas get.

### Bright Eyes

Little eyes love to explore! Place the soother on the floor in front of baby during tummy time. Watching the sea animals swim and bubbles glide keeps baby engaged and helps support their visual development!

### Talk it Out

Support baby's language development! Point to and name the soother's colors and animals, including Janet the Jellyfish and Opus the Octopus! As baby grows, ask them to name the characters and colors on the soother too!

### Remote Learning

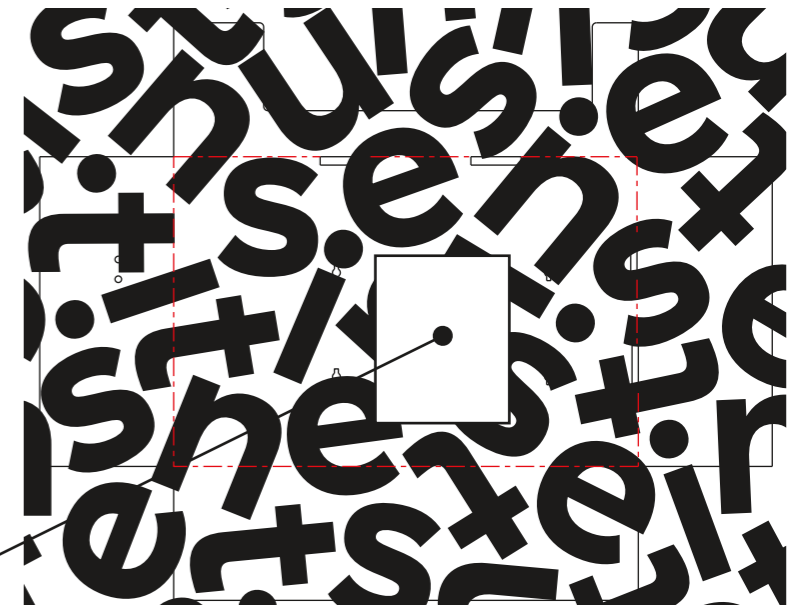
Keep the discovery going with the push of a button! Use the remote to activate the soother up to 12 feet away to let baby enjoy classical music and glowing lights uninterrupted!



Scan to watch these  
play tips in action!



## Attachment Instructions



4x5" Play tips Card to be attached  
via ziptie to insert behind product

## 0.3mm Matte White PP



File Name: 17428\_PTC081325

Brand: Baby Einstein

Category: Baby Toy

Product Name: Sea Dreams Soother™

Package Designer: Chelsea A

Product Manager:

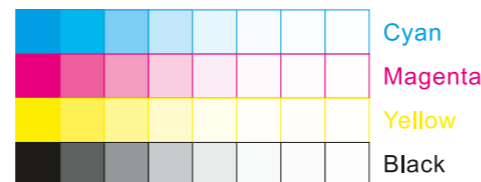
Engineer:

Languages: Languages on Package 1

Dimensions: see die line

### Packaging Prints

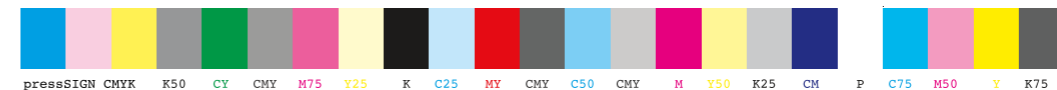
CMYK



pressSIGN CMYK\_Colourbar\_ISO 12647-2 Coated White Backing v6\_labels\_below i1Pro Contrast Bars.eps



pressSIGN CMYK\_Colourbar\_ISO 12647-2 Coated White Backing v6\_labels\_below.eps



There are two color bars on this proof and in the art file. One to be used with X-rite I1 Pro Spectrophotometer. The other can be used with most other spectrophotometers. Printers must repeat one of the two color bars all the way across the width (gripper edge) of the press sheets on sample runs and production runs. Failure to comply will result in the remaking of film and/or plates at your cost.

数码稿以及设计文件包含了两种色带。一种适用于X-rite (爱色丽) I1 Pro 分光光度计, 另一种适用于其它大部分的分光光度计。在打样或者批量生产时, 印刷厂必须选择其中一种色带并重复添加直到覆盖整张纸的宽度(叼口边)。没有按照上述要求而导致重新出菲林、出版的费用将由印刷厂承担。