

FRONT (4x5in)

12487-013



The Einstein Way™
Sensational Janet™
Sensory Rattle & Teether
Play Tips



3m+

Promotes sight, sound, & touch!



TEACHES



BACK (4x5in)



Look and Learn
Catch baby's eye and help support their visual development! Gently shake the rattle just out of baby's line of vision to encourage them to turn their head left or right. Slowly move the rattle side to side or up and down to encourage visual tracking.

Keep it Cool
Keep baby cool and comforted! Chill the teether for a few minutes before giving it to your baby. The cold textures will help soothe their sore gums and provide sensory stimulation!

Touchy Feely
Help baby get a feel for discovery! Skin is our largest organ, and you can stimulate a large part of baby's brain by allowing them to feel different textures. Describe the different textures as smooth, bumpy, or soft to help baby learn new words too!

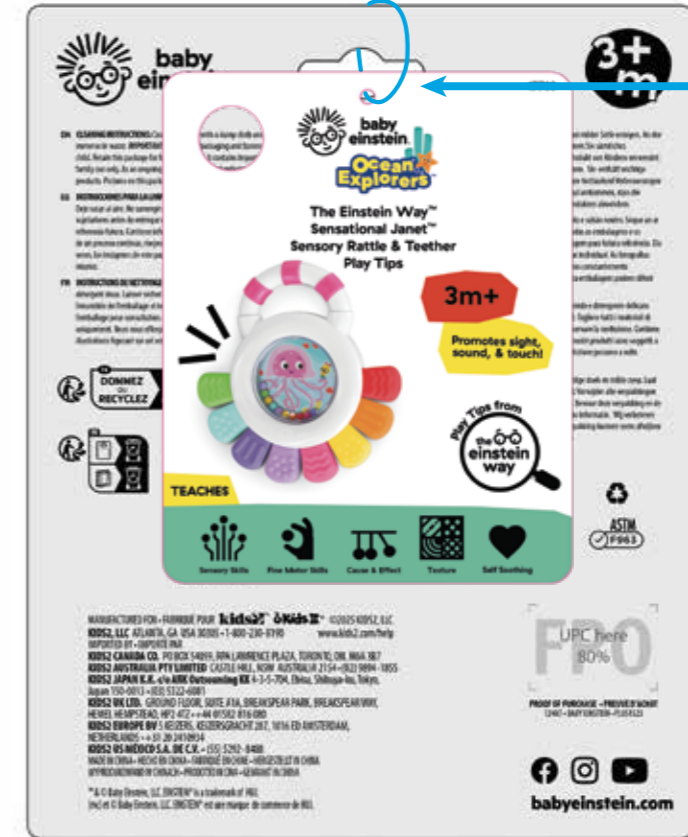
Rattle and Roll
Engagement is the perfect travel companion! Take the rattle along wherever you go to keep the discovery going. Its compact size fits in most diaper bags and fun rattle sounds keep baby engaged wherever you go!



Scan to watch these play tips in action!



Attach Instructions



4x5" Play tips Card to be attached via ziptie through Peghole & hang behind the peg card

0.3mm Matte White PP



File Name: 12487-013_PTC080425

Brand: Baby Einstein

Category: Peg Toy

Product Name: Sensational Janet

Package Designer: Chelsea A

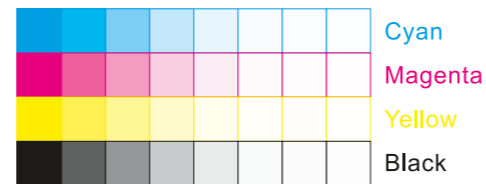
Product Manager:

Engineer:

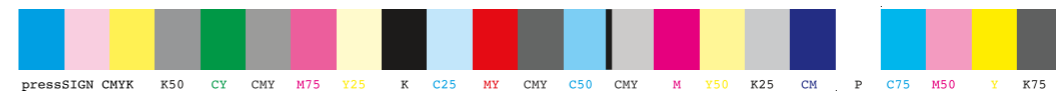
Languages: Languages on Package 1

Dimensions: see die line

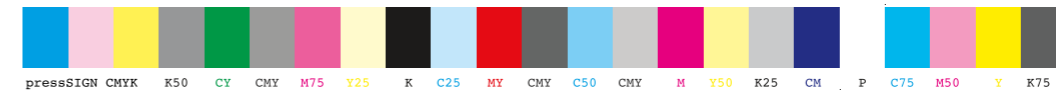
Packaging Prints
CMYK



pressSIGN CMYK_Colourbar_ISO 12647-2 Coated White Backing v6_labels_below i1Pro Contrast Bars.eps



pressSIGN CMYK_Colourbar_ISO 12647-2 Coated White Backing v6_labels_below.eps



There are two color bars on this proof and in the art file. One to be used with X-rite I1 Pro Spectrophotometer. The other can be used with most other spectrophotometers. Printers must repeat one of the two color bars all the way across the width (gripper edge) of the press sheets on sample runs and production runs. Failure to comply will result in the remaking of film and/or plates at your cost.

数码稿以及设计文件包含了两种色带。一种适用于X-rite (爱色丽) I1Pro 分光光度计, 另一种适用于其它大部分的分光光度计。在打样或者批量生产时, 印刷厂必须选择其中一种色带并重复添加直到覆盖整张纸的宽度(叼口边)。没有按照上述要求而导致重新出菲林、出版的费用将由印刷厂承担。