

# FRONT (4x5in)

12933



The Einstein Way™  
Hape™ Magic Touch Kitchen™ Pretend to Cook Toy  
Play Tips

9m+

200+

Phrases, sounds, & melodies



## TEACHES



Cause & Effect



Listening



Foods



Languages



Shapes



Pretend Play

# BACK (4x5in)



## Head Chef

Help your little chef discover cause and effect as their actions make the kitchen come to life! Press or twist the buttons with your child. As the kitchen responds, talk about how their exploration is helping introduce cooking skills!

## Food for Thought

Introduce your child to a variety of foods! Encourage your child to follow the recipe cards to “cook” a meal. Point to and name each of the foods on the cards for baby. Bonus tip: Place the cards in the kitchen toy to hear food and meal names too!

## Learn the Lingo

Put language learning on baby’s menu! Use the language switch to introduce colors, food names, and shapes in English, French, German, & Spanish. Press the buttons to each language and repeat the words to help baby learn!

## Better Together

Invite the world’s cutest sous chef into the kitchen to learn alongside you! Bring the toy into the kitchen while you model common skills like stirring a pot and washing the dishes. Show and talk to baby about what you’re doing, then ask them to do the same thing with their kitchen toy!



Scan to watch these play tips in action!



# Attach Instructions



using 1 Zip Tie attach 4x5 playtip card below product using die cut holes

## 0.3mm Matte White PP



File Name: 12933\_PTC010726

Brand: Hape/Baby Einstein

Category: Baby Toy

Product Name: Magic Touch Kitchen™

Package Designer: Chelsea A

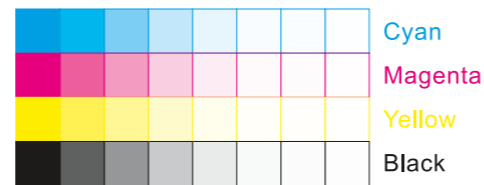
Product Manager:

Engineer:

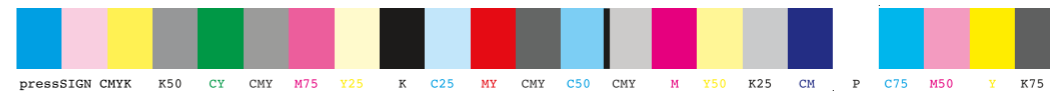
Languages: Languages on Package 1

Dimensions: see die line

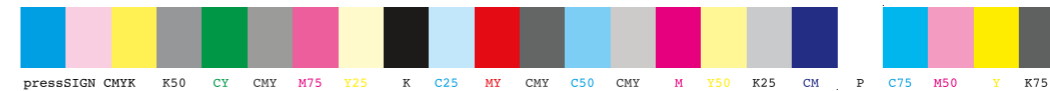
Packaging Prints  
CMYK



pressSIGN CMYK\_Colourbar\_ISO 12647-2 Coated White Backing v6\_labels\_below i1Pro Contrast Bars.eps



pressSIGN CMYK\_Colourbar\_ISO 12647-2 Coated White Backing v6\_labels\_below.eps



There are two color bars on this proof and in the art file. One to be used with X-rite I1 Pro Spectrophotometer. The other can be used with most other spectrophotometers. Printers must repeat one of the two color bars all the way across the width (grripper edge) of the press sheets on sample runs and production runs. Failure to comply will result in the remaking of film and/or plates at your cost.

数码稿以及设计文件包含了两种色带。一种适用于X-rite (爱色丽) I1 Pro 分光光度计, 另一种适用于其它大部分的分光光度计。在打样或者批量生产时, 印刷厂必须选择其中一种色带并重复添加直到覆盖整张纸的宽度(叼口边)。没有按照上述要求而导致重新出菲林、出版的费用将由印刷厂承担。